

Temple Beth El Bulletin

A Conservative, Inclusive, Spiritual Community

www.tbe.org

Volume 47 Issue 3 (bi-monthly)

May - June 2020

Iyar/Sivan/Tammuz 5780

PURIM 2020!



EMERGENCY FOOD DRIVE

We collected 1,214 lbs. of food for the Food Bank and have already received \$2,626 in donations.



Sisterhood Annual Passover Food Sale Pick-Up



100
TEMPLE BETH EL
CELEBRATING OUR FIRST 100 YEARS

TEMPLE BETH EL - BOARD OF TRUSTEES**EXECUTIVE COMMITTEE**

| | |
|--|--------------|
| Carl R. Weinberg, President | 203-322-8675 |
| Mia M. Weinstein, Immediate Past President | 203-595-0528 |
| Lisa Manheim, First Vice President | 917-690-2712 |
| Stan Friedman, Vice President | 203-322-0416 |
| Devra Jaffe-Berkowitz, Vice President | 203-978-1113 |
| Christopher Maroc, Vice President | 914-215-2025 |
| Lael Shapiro, Vice President | 203-273-8380 |
| Steven Sosnick, Vice President | 203-972-6993 |
| Daniel Young, Vice President | 203-975-1990 |
| Robert S. Cohen, Treasurer | 203-329-9622 |
| Dana Horowitz, Secretary | 203-321-0018 |

ADVISORS

| | |
|------------------|--------------|
| Gary P. Lessen | 203-322-7617 |
| Eileen H. Rosner | 203-461-0506 |

TRUSTEES

| | |
|-------------------|--------------|
| Edward M. Berman | 203-329-7750 |
| Kenneth Broder | 203-968-8080 |
| Jeffrey Cohen | 203-358-9911 |
| Kahla Cooper | 203-554-7888 |
| Aron Davidson | 203-274-6363 |
| Susan Greenwald | 203-322-0771 |
| Michael Handel | 203-981-1987 |
| Emily Klein | 347-901-0228 |
| Arthur Laichtman | 203-461-8223 |
| Julie Rosenberg | 203-975-8880 |
| Irma Ross | 203-246-4880 |
| Barbara Rothstein | 203-614-8053 |
| Judy Schneiderman | 203-569-4969 |
| Barry Strom | 203-329-2580 |
| Adam Tronick | 203-569-9570 |

SISTERHOOD PRESIDENT

| | |
|---------------|--------------|
| Karen Resnick | 203-968-8708 |
|---------------|--------------|

PAST PRESIDENTS

| | |
|---------------------|--------------|
| Gordon Brown | 203-276-8688 |
| Rosalea Fisher | 203-323-1449 |
| Fred S. Golove | 203-322-0295 |
| Herbert Kahan | 203-595-9981 |
| Alan Kalter | 203-322-8220 |
| Peter K. Kempner | 203-968-8079 |
| Mark Lapine | 203-329-9879 |
| Gary P. Lessen | 203-322-7617 |
| Sylvan D. Pomerantz | 203-968-0605 |
| Brian Rogol | 212-531-8203 |
| Eileen H. Rosner | 203-461-0506 |

WHERE TO FIND IT

| | |
|------------------------------|----------|
| Joshua Hammerman, Rabbi..... | Page 3 |
| May Service Schedule..... | Page 4 |
| Young Families | Page 5 |
| Adult Education | Page 6 |
| B'nai Mitzvah..... | Page 6 |
| Sisterhood | Page 8-9 |
| Beth El Cares | Page 12 |

COMMITTEE CHAIRPERSONS**Beth El Families**

| | |
|---------------------|--------------|
| Dana Horowitz | 203-321-0018 |
| Josh Levine | 203-276-1395 |
| Lisa Manheim..... | 203-724-9196 |

Board of Education

| | |
|------------------------|--------------|
| Arthur Laichtman | 203-461-8223 |
|------------------------|--------------|

Empty Nesters

| | |
|----------------------------|--------------|
| Sue and Carl Shapiro | 203-353-0657 |
|----------------------------|--------------|

Facilities

| | |
|-------------------|--------------|
| Lael Shapiro..... | 203-517-4835 |
|-------------------|--------------|

Finance

| | |
|-----------------------|--------------|
| Robert S. Cohen | 203-329-9622 |
| Susan Frieden..... | 203-869-4282 |

Fund Raising

| | |
|----------------------|--------------|
| Dana Horowitz | 203-321-0018 |
| Steven Sosnick | 203-972-6993 |

High Holy Days

| | |
|------------------|--------------|
| Jeff Cohen | 203-358-9911 |
|------------------|--------------|

High Holy Days Food Drive

| | |
|---------------------|--------------|
| Sharon Turshen..... | 203-323-3872 |
|---------------------|--------------|

Human Resources

| | |
|---------------------|--------------|
| Carl Weinberg | 203-322-8675 |
|---------------------|--------------|

Marketing and Communications

| | |
|--------------------|--------------|
| Stan Friedman..... | 203-322-0416 |
|--------------------|--------------|

Mitzvah Garden

| | |
|------------------------|--------------|
| Harriet Weinstein..... | 203-353-8873 |
|------------------------|--------------|

Project Ezra

| | |
|----------------|--------------|
| Joy Katz | 203-329-3359 |
|----------------|--------------|

Reyut Committee

| | |
|-----------------------|--------------|
| Melanie Massell | 203-324-7190 |
|-----------------------|--------------|

Ritual Committee

| | |
|------------------------|--------------|
| Eileen H. Rosner | 203-461-0506 |
|------------------------|--------------|

OUR STAFF IS MOST EAGER TO ASSIST YOU

Monday - Thursday, 9am - 5:00 pm | Friday, 9am - 2:00pm

Phone: 203-322-6901 Fax: 203-322-0532

| | |
|--|--------------|
| Joshua Hammerman, Rabbi (rabbi@tbe.org) | ext. 307 |
| Sidney G. Rabinowitz, Hazzan Emeritus (hazzan@tbe.org) | ext. 309 |
| Steven Lander, Executive Director (execdir@tbe.org) | ext. 304 |
| Lisa Gittelman Udi, Director of Congregational Learning (eddir@tbe.org) | ext. 305 |
| Rabbi Gerry Ginsburg, Pastoral Support (rabbiginsburg@tbe.org) | ext. 300 |
| Jami Fener, Engagement Coordinator (engagement@tbe.org) | 917-680-9413 |
| Beth Silver, Religious School & Campaign Administrative Assistant (education@tbe.org campaign@tbe.org) | ext. 306 |
| Linda Rezak, Bookkeeper (lindar@tbe.org) | ext. 302 |
| Mindy Rogoff, Temple Secretary (office@tbe.org) | ext. 301 |
| Beth Silver, Secretary (adminassist@tbe.org) | ext. 308 |
| Alberto Eyzaguirre, Facilities Manager (maint@tbe.org) | ext. 314 |
| Sisterhood Gift Shop (bfberman@gmail.com) | 203-329-7750 |
| Katherine Kaplan, Cantorial Soloist | ext. 300 |
| Beth Styles, Music Director | ext. 300 |
| Cantor Moshe Bear, B'nai Mitzvah Coordinator | ext. 300 |



Welcome to my first bulletin message of the Covid-19 era, though for many of you, it's hardly the first time you've heard from me over the past several weeks. When the crisis first intensified in March I felt it was important to many people that their synagogue become an anchor, connecting them to one another and building a deep sense of spiritual purpose. We've tried to do that in a number of ways, stressing our primary Jewish modes of being: acting to repair the world, deepening our understanding through study, and connecting to one another and to God, through prayer and conversation. I'm exceedingly proud of how so many of us have responded to the cry of the hour. Foremost among them are those first responders and service professionals, from the doctor and nurse in the emergency room to the people who collect garbage or deliver pizzas. We've gained a deeper appreciation and love for all of them.

Behind the front lines, I also understood the importance of those staying inside and distancing themselves for the common good. Although I've had to venture out on occasion for funerals and other emergencies, I've been like most of you, and my notes "from the bunker" have been designed to help bring us together in common purpose. Judging from the readership and response, that has happened. Our services and other programs have also drawn lots of positive response.

Everything is a work in progress in this era of radical disruption. So, I encourage you to contact me with your ideas and preferences. For instance, we now have a minyan every day at 1:00 p.m. and now count virtual attendees as a quorum for Kaddish. Please let me know if you would like to see our Shabbat morning Torah study at 11:00 a.m. expand to a more complete service — and whether you would commit to attending regularly. We'll be having our first Zoom Bar Mitzvah, for Eli Schwartz, on May 30 (Shavuot, Day 2) when we will also have Yizkor (Other B'nai Mitzvah were moved to the Fall.). We've had a number of adult ed opportunities, and our weekly Healing and Hang Out on Sunday afternoons.

Which brings us to the significance of living in this historic moment.

I've got a book coming out on May 14 — and I guess the book signing will need to be put off for a while — but you can still order it on Amazon, and look out for some Zoom events. ***Embracing Auschwitz: Forging a Vibrant, Life-Affirming Judaism that Takes the Holocaust Seriously*** has drawn some very positive response thus far. As I wrote in the Forward recently, the legacy of the Shoah has been amplified by a global pandemic that will define this century just as the Holocaust defined the last. And the message of one reinforces the other: We are all inextricably connected, like the woven threads of a tapestry.

Dr. Martin Luther King, Jr. writes in his letter from the Birmingham Jail, "We are caught in an inescapable network of mutuality, tied in a single garment of destiny. Whatever affects one directly, affects all indirectly."

At the museum in Auschwitz, the overwhelming, unspeakable photos of the intertwined bodies of the victims (at peak efficiency, they gassed up to 3,000 at a time in

Birkenau) give us a completely new way to understand that network of mutuality. In those photos, it is nearly impossible to detect where one body begins and another ends, and there is nothing to indicate which victim was from Germany, from Hungary or from Slovakia. There is very little to determine who was a Hasidic, Reform or secular Jew; Jewish or just Jew-ish, or not Jewish altogether.

And now, 75 years after the Holocaust, the line is drawn directly to our current predicament. Despite the forced separation of social distancing, never before has all of humanity felt — or been — so physically interdependent.

Our fates are literally in the hands, washed or unwashed, of millions of people whom we will never meet. College students who defy the calls to avoid bars and beaches during Spring Break are literally endangering the lives of their grandparents. Through each cough or sneeze, our bodies have become One Human Tissue.

When HIV first spread, it was suggested that when a person had unprotected sex, they were having sex with every prior partner as well. Now with this pandemic, that contention has been extended to breathing and touching.

Each hug is a potential dagger, not just for the person opposite you but to people on the other side of the world, no matter where you live or who you are. Front pages from all over the world are screaming the very same headlines. We've never been so lonely and fearful, sitting in our cold, quarantined rooms; but through our very separation, we've never been so inextricably interconnected.

And with that, we've reached a different place in the evolution of Judaism and human civilization.

My prayers go out to all of you, that you find safety and good health and a life of deepened significance, as we proceed during this time of uncertainty and peril.



Rabbi Joshua Hammerman

100
TEMPLE BETH EL
CELEBRATING OUR FIRST 100 YEARS

WATCH FOR DETAILS OF UPCOMING EVENTS

Shabbat Services Celebrating our Past-Presidents
date to be determined

100th Anniversary Relay and Brunch
Sunday, September 13 at 10:00am

Shabbat Services Celebrating Our Members
Who Joined 1973-2000
Friday, October 30 at 7:30pm

Shabbat Services Celebrating Our Members
Who Joined 2001-2019
Friday, November 20 at 7:30pm

Celebration Finale
Saturday, December 5 at 8:00pm



SHABBAT AND FESTIVAL SERVICES



MAY

Friday, May 1

Family Kabbalat Shabbat featuring Grades 1 and 2 6:00 p.m.
on ZOOM

Featuring Cantor Katie Kaplan

Shabbat, May 2

Torah Learning Discussion 11:00 a.m. on ZOOM
Kids-in-the-Round 11:00 a.m. on ZOOM

Friday, May 8

Kabbalat Shabbat 6:00 p.m. on ZOOM
Featuring Beth Styles, Music Director

Shabbat, May 9

Torah Learning Discussion 11:00 a.m. on ZOOM
ShaBaBimBam 11:00 a.m. on ZOOM

Friday, May 15

Kabbalat Shabbat 6:00 p.m. on ZOOM
Featuring Beth Styles, Music Director

Shabbat, May 16

Torah Learning Discussion 11:00 a.m. on ZOOM

Friday, May 22

Kabbalat Shabbat 6:00 p.m. on ZOOM
Featuring Beth Styles, Music Director

Shabbat, May 23

Torah Learning Discussion 11:00 a.m. on ZOOM
Family Havdalah Service 6:30 p.m. on ZOOM

Thursday, May 28 - Erev Shavuot
Tikkun Leil Shavuot 8:00 p.m. on ZOOM

Friday, May 29 - Shavuot, 1st day
Kabbalat Shabbat 6:00 p.m. on ZOOM
With Cantor Katie Kaplan

Shabbat, May 30 - Shavuot, 2nd day
Shabbat Shavuot Services and Yizkor 10:00 a.m.
With Rabbi/Cantor Vicki Axe

ELI SCHWARTZ, BAR MITZVAH on ZOOM
Kids-in-the-Round 11:00 a.m. on ZOOM

RESCHEDULED EVENTS

TBE ADULT BAR/BAT MITZVAH CLASS
Rescheduled: Shabbat, June 19, 2021
The new class schedule will be announced.

TBE HUMANITARIAN TRIP TO CUBA
Rescheduled: January 10-17, 2021

TBE TRIP TO EASTERN EUROPE
Rescheduled: July 4-16, 2021
Optional Berlin Pre-Tour: June 30-July 4, 2021

Hello, I'm calling from TBE...



After a round of calls made to our senior congregants (many living alone) was so welcomed, over 40 volunteers called every congregant to make sure they were okay and to see if there was anything TBE could do for them. A team of volunteer shoppers was quickly put together to deliver groceries and medications and many questions and concerns were answered concerning ZOOM programs, help with accessing services or even organizing minyans on ZOOM. Some of the individuals called requested weekly calls which our volunteers have continued to make. As we go to press with this Bulletin, a second round of calls is now being conducted by even more volunteers.

TBE is here for you and if you need any assistance, please feel free to call Steven Lander in the office at 203-322-6901, ext. 304.

WOULD YOU LIKE TO BE A GABBAI?



Training available!

Please contact Rabbi Hammerman
at rabbi@tbe.org.



EMMET'S PLAYGROUND

Emmet's Playground is being built in memory of 10-year-old TBE member Emmet Manheim z'l. We are delighted to be working with Miracle Recreation, a company on the cutting edge of playground design. They, along with Emmet's family and friends, have been instrumental in envisioning a space that will bring joy to any child who plays there.

At a recent town Planning Board meeting, construction of the playground was approved unanimously. Thank you to TBE member Rick Redniss, and his company Redniss&Mead, for keeping this project alive and moving forward. They have been wonderful to work with, and Rick has been very generous with his time and talents, as has general contractor Sylvan Pomerantz.

Our goal is still to break ground sometime in early August. The playground will not only provide a safe and accessible place for TBE children, but also a lovely renovated space for TBE members to relax and enjoy being outdoors, especially after so many months inside.

If you wish to learn more about Emmet's Playground, please visit our website www.emmetsplayground.com.

Lisa and Jeff Manheim



Services and Events



A Shabbat program for families with children 5 and younger (older siblings welcome)

**Shabbat mornings
11am - 12pm**

led by Natasha Fenster & Steve Epstein
May 9 and June 6 on ZOOM



SAVE THE DATE!
Back by popular demand...
My Gym Family Party!
Sunday, August 9, 3:00 - 4:30 pm
Details to come!

INTRODUCING...MITZVAH MONDAYS!

Call Jill Knopoff, 203-921-4161, for updates on when this program will resume!

Join TBE and Schoke Jewish Family Service for Mitzvah Mondays! From toddlers to teens, bring your kids and some kosher, non-perishable food items and help stock the shelves of the Freedberg Family Kosher Food Pantry!

This program takes place on the 3rd Monday of each month from 3-5 pm: May 18 and June 15.

This is a great way to perform a family mitzvah that will benefit the whole community! The Freedberg Family Kosher Food Pantry is located at Schoke JFS at 196 Greyrock Place, Stamford.

Kids-in-the-Round

Family Shabbat Service
for families with children ages 5-8

**May 2, 30 on ZOOM
June 20 at TBE at 11:00am**

Led by Bobby Doowah!



Questions? Contact Jami Fener at youngfamilies@tbe.org or Lisa Gittelman Udi at eddir@tbe.org

VIRTUAL YOGA

Tuesday, May 19

**Pre-school - age 8 at 3:00pm
Toddlers age 3 and under at 4:30pm**

Watch for details!

JOIN TBE FOR OUR FIRST VIRTUAL

FAMILY HAVDALAH

led by Rabbi Hammerman and Cantor Katie Kaplan
featuring prayers, songs, and a story!

Saturday, May 23 @ 6:30 PM

Zoom link: <https://us02web.zoom.us/j/87513040940>
Meeting ID: 875 1304 0940, Password 314774

Questions? Contact Jami Fener
engagement@tbe.org



Religious School Students Attend Classes on ZOOM

Hazzan Brian Shamash with Grades 5 & 6

Nancy Herz and Kindergarten



B'NAI MITZVAH

May 30 - on ZOOM

ELI SCHWARTZ

Son of Deborah Schwartz & Doug Schwartz
Brother of Charlie

Attends Cloonan Middle School

Mitzvah Project: Fundraising for the
Gaming Specialist Department at Yale New
Haven Children's Hospital



Date: To Be Rescheduled

LEAH RAICH

Daughter of Risa & Steven Raich

Sister of Jordana, Talia & Daniella

Attends Bi-Cultural Hebrew Academy

Mitzvah Project: Fundraising to send
Beldotti Bakery baked goods to Stamford
Hospital and Stamford Police Department



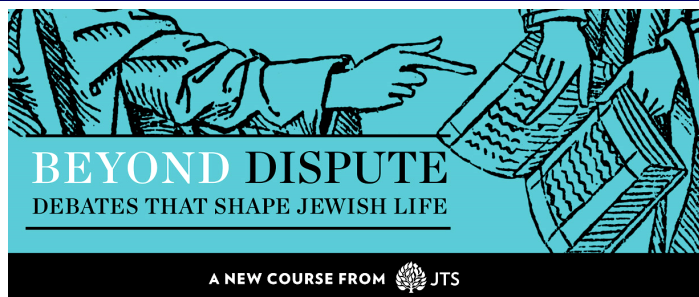
BETH EL CEMETERY ASSOCIATION ANNUAL MEETING

The Annual Meeting of The Beth El Cemetery Association will be held on June 8 at 7:00 pm in the library of Temple Beth El - COVID-19 conditions permitting.

Members of the Association are those who are current members of TBE who own two or more plots.

The following slate is up for three-year terms: Sylvan Pomerantz, Eileen H. Rosner, Seymour Weinstein

Questions may be address to Eileen H. Rosner, Executive Director, at rosnereileen@gmail.com.



A TBE Adult Learning Series led by Rabbi Joshua Hammerman

Tuesday Evenings, 5:00pm
May 12, 19, 26 on ZOOM



Future debate topics - Philosophical, spiritual, ethical, and cultural, are to be addressed in sessions:

- Are religion and reason compatible?
- Can Jewish law change based on context?
- How do we teach and talk about the Holocaust and the State of Israel?
- Is our relationship with God defined by human obligation or divine compassion?
- Should we prioritize Jewish causes or universal causes in our giving?
- Is Jewish tradition intrinsically patriarchal and ableist?

Join us for this unique opportunity to explore how these debates have been manifested over the course of Jewish history, and to discuss their continued resonance for contemporary Jewish life.

This course is made possible through
the generous support of Mr. Earle Kazis
and the Kazis Family Publications Foundation.

2020 Nominees for the TBE Board of Trustees

The Nominating Committee of Temple Beth El presents to the Congregation the following slate of nominees for the Board of Trustees to replace those Trustees whose terms are expiring on June 30, 2020. Elections will be held at the Annual Meeting scheduled for Wednesday, May 27 at 7:30 p.m. on ZOOM.

Bios of first-term nominees may be found at www.tbe.org/2020-bot-nominees.

We thank the following Trustees for their Board service: Ed Berman, Ken Broder, Barry Strom and Adam Tronick.

Respectfully submitted,

TBE Nominating Committee

Jeff Cohen, Chair, Devra Jaffe-Berkowitz, Aron Davidson, Susan Greenwald, Scott Krowitz, Jeff Manheim and Mia Weinstein

NOMINATED FOR A 1-YEAR TERM ENDING IN 2021

David Amsellem

NOMINATED FOR THEIR FIRST 3-YEAR TERM ENDING IN 2023

Lori Bushell
Jon Eisenstein
Leslie Glenn
Jeff Turshen

NOMINATED FOR HER SECOND 3-YEAR TERM ENDING IN 2023

Devra Jaffe-Berkowitz

NOMINATED FOR THEIR THIRD 3-YEAR TERM ENDING IN 2023

Robert S. Cohen
Arthur Leichtman

FACE SHIELD PROJECT FOR STAMFORD HOSPITAL

Over 60 volunteers produced 1,500 face shields for front-line staff at Stamford Hospital. They were delivered two weeks ago by Lois Stark and Gary Lessen and, as a result of TBE's efforts, the Hospital recently announced that their face shield needs are fully satisfied - for the time being.

(Left to right: Wil Brewer, Allen Krim, Sydney Marks and Xavier Marks)



The Picture Project

Young families of Temple Beth El in Stamford, CT are coming together to create greeting cards, artwork, poems, and letters for area hospitals and nursing homes to show our love and support. We could use your help! The more we receive the more we can deliver.

Let's create get well cards and pictures for patients, and also items to thank health care workers for their dedication!

Please mail or drop off your creations:

Jami Fener | 2 Richards Ave #1 | Stamford, CT | 06905
Questions? Contact Lauren Chitalia at 917.288.6385, or
Jami Fener at 917.680.9413



MAZAL TOV TO...

Debbie Katz Shapiro and Leon Shapiro on being honored for their extraordinary dedication and leadership to the JCC

Arthur Selkowitz on receiving the Arlene & Irwin Ettinger Legacy Award at the JCC Gala Dinner

Karen and Steven Shindler on the birth of a granddaughter, Adora Mae, born to Ariel and Antony Wilshaw

Suzanne Pianin on the marriage of her son, David, to Nora Kurtz



Share your family's simcha (engagement, marriage, birth, Bar or Bat Mitzvah of a child or grandchild) and other joyous event. Just contact the TBE office at office@tbe.org or 203-322-6901, ext. 301.

HONORABLE MENSCHEN TODAH RABAH TO OUR TORAH READERS!

CANTOR ARIELLE GREEN

RABBI JOSHUA HAMMERMAN ☆ LEXI HANDEL

CAROL KRIM ☆ BERT MADWED ☆ JULIE ROSENBERG

SUSAN SCHNEIDERMAN

SEEKING SHABBAT GREETERS

Do you like getting a warm "Shabbat Shalom" as you enter shul on Saturday morning?

Our greeting program has been extremely well received. To keep this program going, we need volunteer greeters like you.

For more information Contact Barry Strom at barrymstrom@gmail.com

Thanks for helping make Temple Beth El a warm and welcoming place to be.

CELEBRATING A SPECIAL EVENT? COMMEMORATING A YAHRTZEIT?

Please consider sponsoring a Kiddush, following Shabbat Services, or an Oneg Shabbat, following our Friday evening services.

Contact Steven Lander for all of the new, reasonably priced Kiddush options at 322-6901, ext. 304 or execdir@tbe.org.

DID YOU KNOW?

TBE offers free family membership for the first year to any member's child on the occasion of his or her marriage. For more information, contact Steve Lander at 203-322-6901, ext. 304.



SISTERHOOD

TBE's Sisterhood was formed in 1922, very shortly after TBE was organized with its first fifty families. It is no surprise that the congregation established a Sisterhood so early in TBE's history, in view of Sisterhood's integral role in making TBE a more welcoming, comfortable and friendly place. As part of TBE's 100th Anniversary celebration, the Sisterhood Board decided to review the Sisterhood By-Laws, last revised in 1998, and refresh them to reflect current needs, demographics, and practices. A By-Laws Revision Committee was formed consisting of Barbara Berman, Leslie Heyison (Chair), Barbara Rothstein, Cathy Satz. The proposed By-Laws may be found here: www.tinyurl.com/sistbylaws

If you have any comments or questions about them, please contact Leslie at heyison@gmail.com or 203-964-9386 by June 1, 2020. A vote will take place after June 1st for their enactment.

Karen Resnick
Sisterhood President

Torah Fund Pin for 5780 (2019-2020)



Every year Torah Fund offers a special pin for a donation of \$180. The theme of this year's pin is Chesed - "kindness" or "loving kindness" conveying the deep love of Jewish acts of kindness which are done without thought of reward.

The 5780 (2019-2020) Torah Fund pin depicts a heart surrounded by three circles, one larger than the next. This symbolizes the ever-widening realms of generosity: From family, to community, to the larger world; from North America, to Israel, to the world. As it is said in Psalm 89, "May we build a world of kindness." What message could be more appropriate in today's world? Purchase from Suzanne Stone, suzanneshorn@yahoo.com, 203-866-2273.

Special Occasion?

Sponsor The Shabbat E-announcements
(sent every week via e-mail)

The Shabbat Announcements
(distributed each Shabbat at the Temple)
and the Shabbat-O-Gram
(e-mailed every Thursday night)

All three publications for \$72

All sponsors will be acknowledged at the beginning of each of these announcements and also listed in our bi-monthly Bulletin.
Call Mindy in the office at 322-6901 ext. 301.



Our 2020 Spring/Summer schedule started out full of exciting events!! At the beginning of March over 45 people attended a lecture given by **Matt Baier**, President of Organizing Professionals in CT, [NAPO-CT](#) and a best-selling author. Who knew at the time we would have plenty of time to get organized? If anyone would like to use Matt's service, he will donate **5%** to Sisterhood!! Check out [mattbaier.com](#).

Sisterhood and Men's Club also sponsored a presentation by **Ruth Messinger** which had a fantastic turnout. Ruth spoke out about injustice in this country and provided examples of what we can do to address this problem.

Thanks to **Lauren Haas**, Professional Organizer, Clutter Kicker, LLC for her ZOOM session on April 6 called **"Decluttering and Organizing: Passover Edition."** Twenty-nine people joined the online session. It's always special to have one-of-our-own as a presenter at a Sisterhood event, as **Lauren (Kalter) Haas** grew up right here at TBE. Thank you to **Stan Friedman** for setting up and recording the session. You can learn more about Lauren at [ClutterKickerCT.com](#)

Thank you to **Betty Baer** for, once again, organizing our annual Passover Food Sale, with over 80 orders this year.

Event Updates: Postponed due to the Coronavirus:

♦ Sisterhood Shabbat

Please contact Leslie Heyison [lheyison@gmail.com](#) with any questions.

♦ Curtain Call (4.30.20) in the Dressing Room Theater | Show: CROSSING DELANCEY STREET

As soon as we learn of future plans from Curtain Call, we will let you know about rescheduling this event.

♦ FASHION SHOW at Lord & Taylor

Please contact Juli Harris email: [jaharris99@aol.com](#) with any questions.

Always look in the Shabbat Announcements for details and any changes.

Contact Sisterhood at [sisterhood@tbe.org](#) or feel free to call/email us (see lavender box →). We love hearing from you and are always looking for volunteers! Call any of us – especially now, even if you just want to chat – we are here!

The Corona virus reminds us that we are all connected and need each other! Stay Safe. I am looking forward to seeing you soon.

With friendship, and appreciation on behalf of Sisterhood,
Karen Resnick



Sisterhood of TBE Judaica Gift Shop

We are pleased to offer beautiful Judaica items including mezzuzot (for home and wedding), holiday and Shabbat candles, tzedakah boxes, kiddush cups and more. You can special order Judaica items that we don't carry in stock.

For special events, we have tallit, bulk kippahs and tefillin. We no longer carry invitations and stationary.

Please see the window showcases in the upstairs and downstairs lobbies that hold a lovely selection of Judaica items for purchase.

Contact:

Gift Shop Items

Barbara Berman: 203-329-7750

[bfberman@optonline.net](#)

Tallit and Kippahs

Beth Silver: 203-249-7046

[adminassist@tbe.org](#)

Torah Fund Cards and Pins

Suzanne Horn: 203-866-2273

[suzanneshorn@yahoo.com](#)

***Proceeds Support TBE
and Youth Education!***

Please contact Sisterhood at [sisterhood@tbe.org](#) or feel free to call/email a Sisterhood board member with any comments. We love hearing from you and are always looking for volunteers!

Karen Resnick, President

203-536-3115, [kmr925@sbcglobal.net](#)

Judy Schneiderman, Treasurer

203-569-4969, [jrs2125@optonline.net](#)

Dora Salm, Secretary

203-461-8596, [d_salm@yahoo.com](#)

Barbara Berman, Gift Shop

203-329-7750, [bfberman@gmail.com](#)

Donna Wolff, Board Member

917-601-1878, [donna@wolffmedco.com](#)

Paula Shulman, Board Member

203-461-9396, [paulashulman51@gmail.com](#)

Juli Harris, Board Member

203-276-0589, [jaharris99@aol.com](#)

Leslie Heyison, Past President & Advisor

646-354-3950, [lheyison@gmail.com](#)

TBE BRINGS YOU A TASTE OF SHABBAT FROM

Zadies
BAKE SHOP

TBE OFFERS YOU A SWEET SHABBAT FROM THE FAMOUS Zadies Bakery of Fairlawn, N.J.

Check out Zadies Bakery online! <https://youtu.be/SFVIN6tnLxw>

You've tasted it at TBE and now you can order online and have

CONTACTLESS PICK-UP at TBE: FRIDAY, MAY 8, 11:00am-1:00pm

PLACE YOUR ORDER HERE: www.tinyurl.com/tbezaydie

All orders must be received by Wednesday, May 6 at 10 a.m.

No waiting in line at the bakery to eat their famous baked goods.



PULL APART CHALLAH - \$5.99:

CHALLAH ROLLS - \$4.99:

CHOCOLATE KOKASH - \$8.99:

ICED MANDEL BREAD - \$9.99

APPLE STRUDEL - \$8.99

CHOCOLATE BABKA - \$9.99

CINNAMON BABKA - \$9.99

plain, everything, onion, or chocolate chip
package of 8
chocolate filled cake

**Questions? Contact Steve Lander at execdir@tbe.org
or call 203-322-6901, ext. 304.**

Temple Beth El, 350 Roxbury Rd., Stamford, CT 06902



Seventh Grade Aliyah Ceremony



Our 7th Grade Religious School students will graduate at the Annual Membership Meeting on Wednesday, May 27 at 7:30pm on ZOOM.

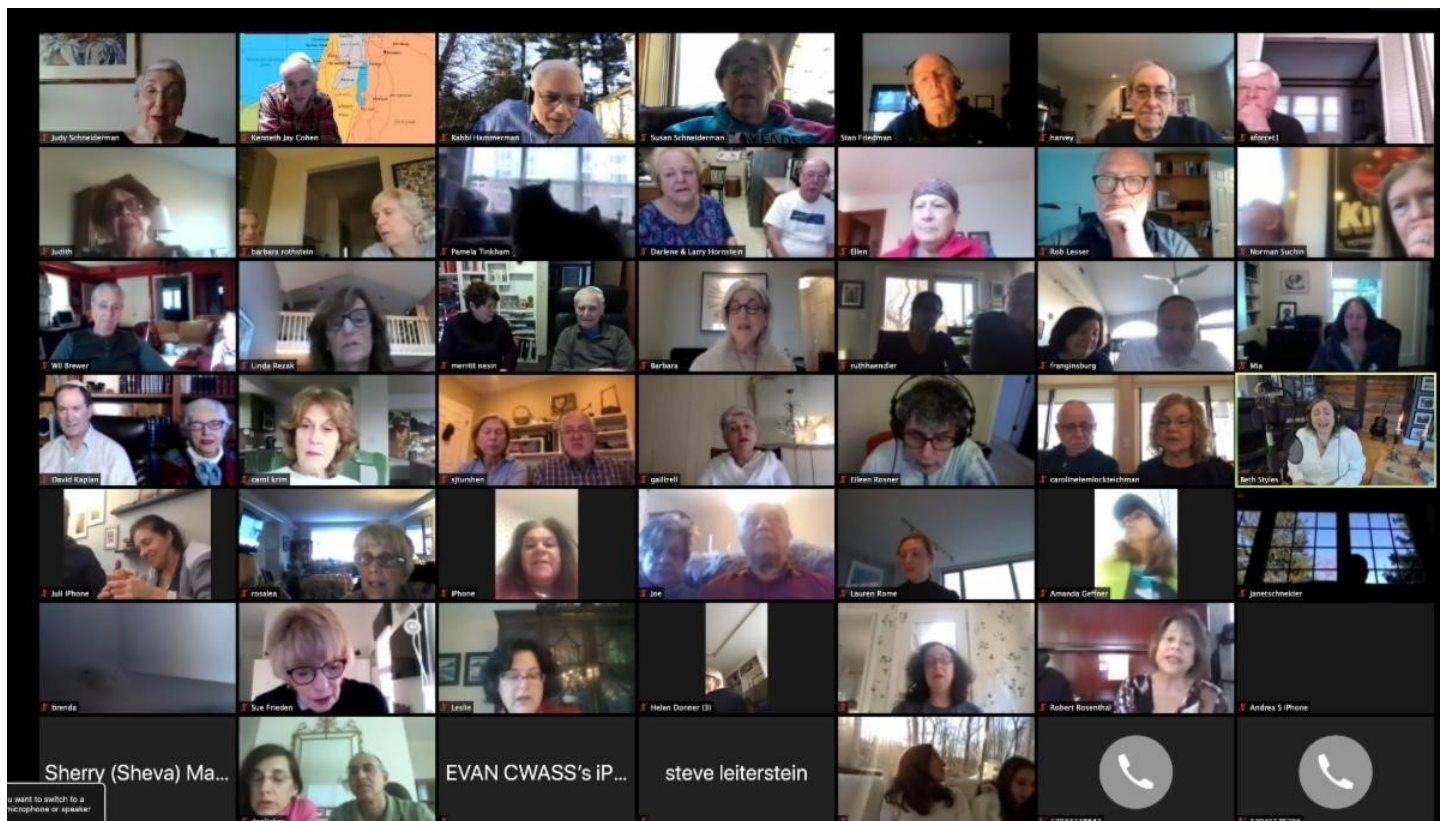
A slide show of images of their years at TBE will be presented and more.

Mazal Tov to our Graduates!

ALEX COHEN
LOLA DUHOV
ILANA GILBERT
OWEN HERZ
SYDNEY KASSEL

CAMRYN LAICHTMAN
BRANDON NADEL
JENNIFER SCHNEIDER
ELI SCHWARTZ
MAYA SHAPIRO
SOPHIE SIGMAN

Kabbalat Shabbat on ZOOM



TBE HAS YOUR BACK_____!

Temple Beth El has made arrangements with our vendors to wipe out one of the most irritating problems of the Coronavirus Era – the absence of toilet paper on supermarket shelves!

TBE has received a large shipment of commercial-grade, two-ply toilet paper (the same product we use in the synagogue's bathrooms), two-ounce bottles of hand sanitizer, and will have face masks delivered soon. We will bundle these supplies into packages of five rolls of toilet paper, one bottle of hand sanitizer, and two face masks.

These packages will be available free of charge to anyone who needs them, although you are welcome to make a donation to TBE to help defray the cost. Please contact Steve Lander (execdir@tbe.org or 203-322-6901 x304) to arrange for either curbside pick-up or delivery of your package.

This is just one of the many projects TBE is undertaking to help us all get through this period safely and as comfortably as possible.



Beth El Cares focuses on chesed and tzedakah by helping the poor and unfortunate through mitzvot, both in our synagogue and the greater Stamford community. We welcome volunteers! This is the work we are currently engaged in. If you are interested in volunteering in any of these endeavors, please contact the person listed.

Reyut (Friendship): Committed to serving the needs of those in our TBE community, including friendly visits, assistance with errands and transportation, Shabbat bag delivery to hospitalized patients. Contact Melanie Massell at reyut@tbe.org or 203-324-7190.

Project Ezra: Providing pre-shiva meals to the bereaved in the congregation. Contact Joy Katz at joyakatz@yahoo.com or 203-329-3359.

Serving the homeless: Helping prepare and serve food — you can do either or both — to the homeless at New Covenant Center in Stamford on the fifth Thursday of each month. Times are 2:30-4:15 pm and 4:15-5:30 pm. Contact Amy Temple at aetemple@optonline.net or 203-496-1309.

High Holiday Food Drive: Contact Sharon Turshen at 203-323-3872

Christmas dinners at local homeless shelters: Contact Amy Temple at aetemple@optonline.net or 203-496-1309.

On April 14, Steven Lander delivered 61 bags of food to the Food Bank of Lower Fairfield County, all donated by TBE members.

He also delivered a check to Kate Lombardo, Executive Director, (They kept their distance!) for \$1,426. When he returned to the office, there was another \$1,000 check for the Food Bank!



8th Grade ZOOM Hang Out

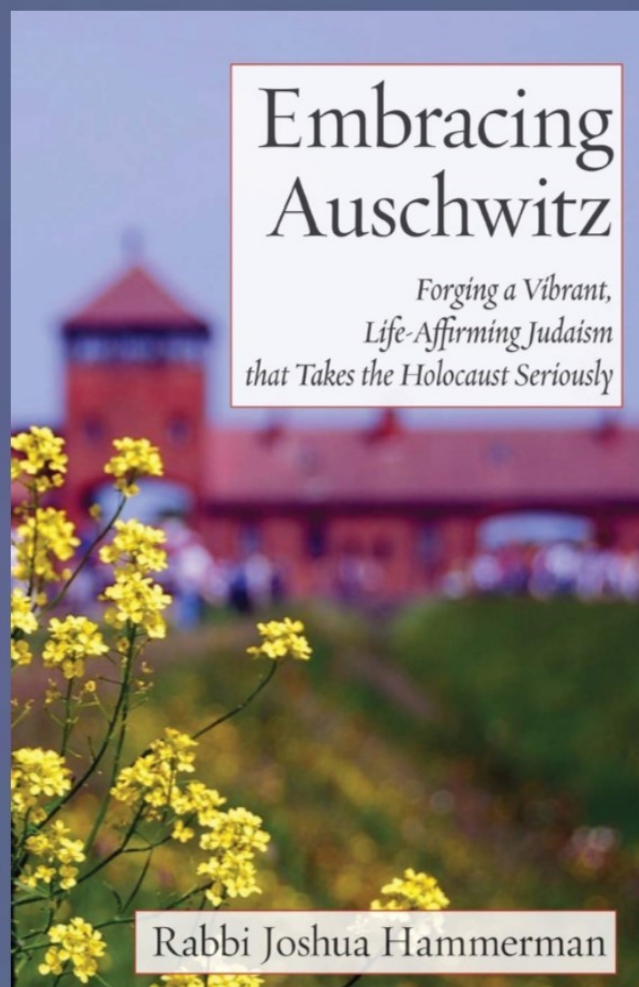


EMBRACING AUSCHWITZ

THE BOLD NEW BOOK BY
RABBI JOSHUA HAMMERMAN



Photo by Aviva Maller



The Judaism of Sinai and the Judaism of Auschwitz are merging, resulting in new visions of Judaism that are only beginning to take shape.

“Compelling and provocative.”
-Yossi Klein Halevi, author of
Letters to My Palestinian Neighbor

“Eye opening and thought provoking.”
-U.S. Senator Richard Blumenthal

“A powerful meditation on what
Judaism could be in this time.”
-Peter Beinart, author of
The Crisis of Zionism

“Hammerman’s brave new vision
challenges us and demands our attention.”
-Gary Rosenblatt, Editor At Large,
The Jewish Week

“Should be read by every Jew who cares
about Judaism.”
-Rabbi Dr. Irving “Yitz” Greenberg,
Author, *The Jewish Way*

To be published May 14, 2020, by Ben Yehuda Press, \$18.85 paperback

Available at:

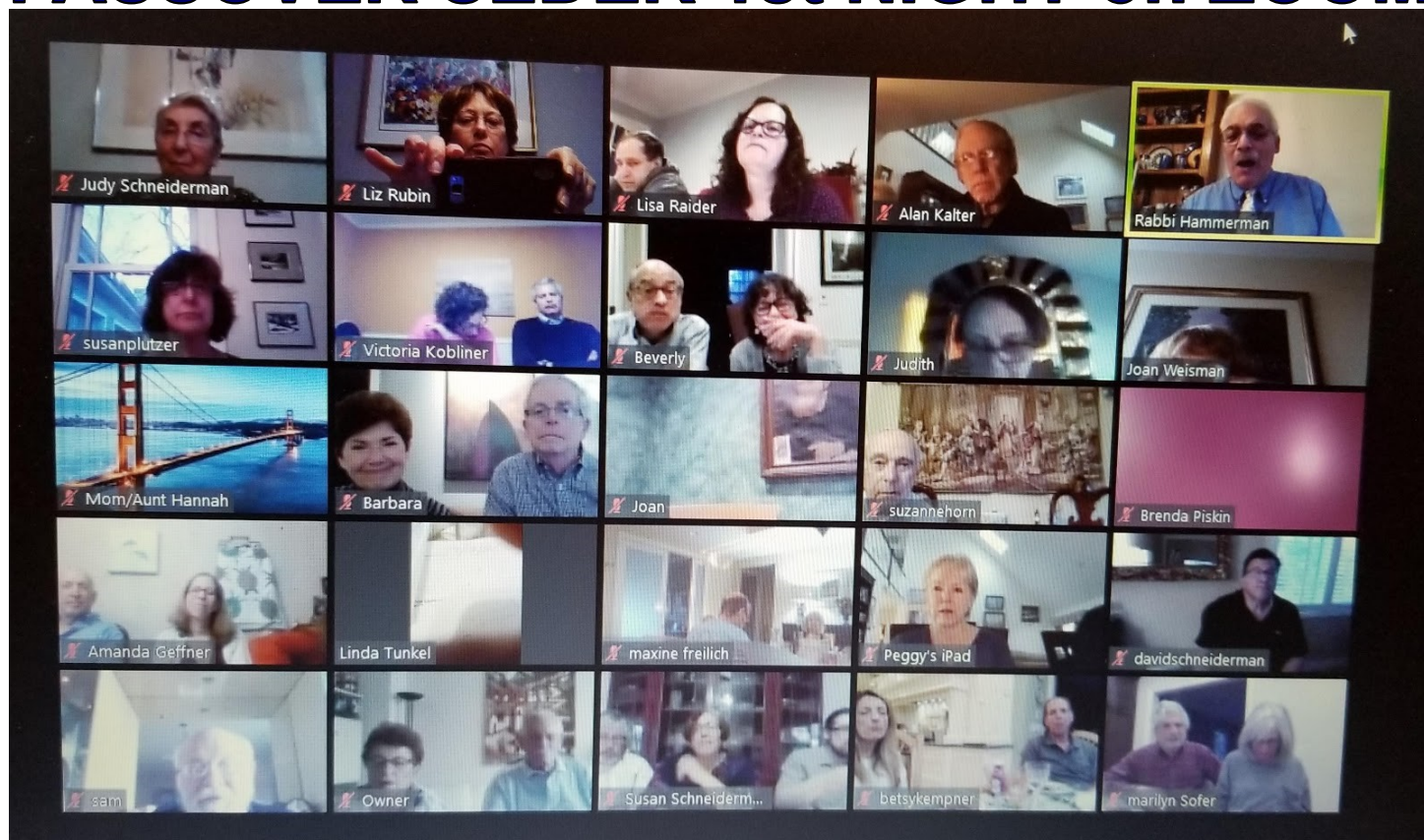
BenYehudaPress.com

Bookshop.org

BN.com

Amazon.com

PASSOVER SEDER 1st NIGHT on ZOOM



YOM HASHOAH COMMEMERATION on ZOOM



DONATE ONLINE
Go to: www.tbe.org/donate/

OPPORTUNITIES FOR GIVING

- ☒ Adult Education Fund
- ☒ Beth El Cares
- ☒ Beth Elders
- ☒ Debra Wald Goldberg Kindergarten Scholarship Fund
- ☒ Frank & Rose Rosner Memorial Fund (maintenance)
- ☒ General Fund
- ☒ Kiddush Fund
- ☒ Matthew Klein Memorial Sanctuary Garden Fund
- ☒ Emmet Manheim Playground Fund
- ☒ Mitzvah Garden Fund
- ☒ Music Fund
- ☒ Prayer Book Fund
- ☒ Project Ezra Fund
- ☒ Religious School Fund
- ☒ Reyut Shabbat Bag Fund
- ☒ Security Fund
- ☒ Solar Fund in memory of Norma Mann, z'l
- ☒ Youth Fund

DISCRETIONARY FUNDS

- ☒ Rabbi Joshua Hammerman's Mitzvah Fund
- ☒ Hazzan Sidney Rabinowitz' Mitzvah Fund

ATTENTION PARENTS OF COLLEGE STUDENTS

Rabbi Hammerman would like to stay in touch with your child while he/she is away at college. Please send his/her e-mail address to Beth in the Temple office at adminassist@tbe.org. *Thank you!*



Get involved, please...

Help Wanted! In order to maintain our vibrant and dynamic community, the Fund-Raising Committee needs more members to support TBE and volunteer their skills and talents. Many of these opportunities ask for very small-time commitments. Please consider getting involved with the:

Annual Appeal | Temple Rock | Cantor's Concert

If you are interested in volunteering, please contact us and we will give you more information.

Thank you!

Dana Horowitz (danalhorowitz@gmail.com)

Steve Sosnick (mssosnick@att.net)

Fund-Raising Co-Chairs

*Every brick has
a story to tell...*

100
TEMPLE BETH EL
CELEBRATING OUR FIRST 100 YEARS

Paver Campaign
2020

Celebrating Our First 100 Years
WATCH FOR DETAILS!

TREE OF LIFE



A beautiful way to commemorate a special occasion is to purchase a "leaf" on our beautiful "Tree of Life" sculpture adorning our Temple lobby. There are many more leaves available for your own personal inscriptions.

The following categories are still available:

| | |
|------------------------------------|----------------|
| Triple Chai | \$5,400 |
| Silver Leaves - Gold Border | \$750 |
| Silver Leaves | \$250 |

CONTRIBUTING SHARES OF STOCK TO TEMPLE BETH EL

One way to boost your charitable contributions to Temple Beth El is to give shares of appreciated stock instead of cash. You do not pay any tax on your capital gain, and your charitable deduction is the shares' entire fair market value.

Several Beth El members contribute shares of stock to satisfy their dues pledge, their annual fund pledge, and other contributions to the Temple.

After consulting your tax advisor, please contact the TBE office at 203-322-6901.

WE ARE GRATEFUL FOR YOUR CONTRIBUTIONS

IN HONOR OF:

COMPLETE RECOVERY FOR ROB COHEN

Suzanne & Norman Stone

SHARON TURSHEN ON HER SPECIAL BIRTHDAY

Barbara & Harvey Lazarowitz

MARA AND RABBI JOSHUA HAMMERMAN FOR BEING THE SPECIAL PEOPLE THAT THEY ARE

Melanie Massell

MUSIC FUND

In memory of...

Doris Rothman, z'l, by Linda & Joe Rothman

SHABBAT BAG FUND

In honor of...

In appreciation by Amy Fishkow Benjamin & Jim Benjamin

In memory of...

Steven Silverstein, z'l, by Meryl & Hank Silverstein

FRANK AND ROSE ROSNER MEMORIAL FUND

In memory of...

Ethel Rosenthal, z'l, by Linda & Joe Rothman

INFORMATION FOR YOU...

When making a donation an acknowledgement will be mailed to the designee for donations of \$10 or more. Donations of less than \$10 will be acknowledged only in the Bulletin. All donations will be published in the Bulletin unless you state that you wish to be anonymous.

MEMORIAL PLAQUES



Inscribe the names of your loved ones on a plaque for our Chapel wall along with a light to commemorate their *yahrtzeit* and *yizkor* observances throughout the year.

For details, contact Mindy at office@tbe.org or 203-322-6901, ext. 301.

PAY YOUR DUES ONLINE

Go to www.tbe.org/donate and click on member payments.

Questions? Contact Linda at 203-322-6901, ext. 302 or lindar@tbe.org.

HAVE YOU VISITED OUR WEBSITE?

www.tbe.org

Find out about the latest news and upcoming activities ... access our online membership directory ... register for events and make donations ... connect to TBE's Twitter and Facebook pages ... and much more.

RABBI JOSHUA HAMMERMAN MITZVAH FUND

In honor of...

Rabbi Joshua Hammerman by Susan Rich

The marriage of David Pianin and Nora Kurtz by Suzanne Pianin

The ZOOM Seder by Beverly & David Stein

Sale of Chametz by Beverly & David Stein

In memory of...

Richard Pianin, z'l, by Barbara & Warren Brandt

EMMET MANHEIM PLAYGROUND FUND

In honor of...

Arielle Sokol on her 10th birthday by Mara Demain

In memory of...

Emmet Manheim, z'l, by Julianne & Michael Metzger

IN MEMORY OF:

SANDRA BURN, z'l

Andrea & Martin Levine, Marsha Shendell, Debbie and Jack Goldberg

RICHARD PIANIN, z'l

Andrea & Martin Levine, Roni & Allan Lang, Saralyn & Allan Shapiro, Marsha Colten & Robert S. Cohen

EMANUEL (MANNY) ROTHMAN, z'l

Carol & Willy Sander, Suzanne & Norman Stone, Marsha Colten & Robert S. Cohen, Bracha & Jerry Silber

MARTIN SCHECHTER, z'l

Karen Resnick, Sharon & Steven Katz

GERALD SHULMAN, z'l

Ariel & Stephen Bedik

JOAN MELTZER, z'l

Judy Schneiderman

RICHARD LEHRFELD, z'l

Maxine & Jay Freilich

DONNA RAMME, z'l

Marsha Colten & Robert Cohen, Shirley & Bruce Sommers, Betsy & Peter Kempner, Bracha & Jerry Silber, Lois Hofshi, Susan Frieden, Evelyn & Bruce Kahn, Marsha Matthews, Peggy & Alan Kalter

MARJORIE ROSENTHAL, z'l

Marsha Colten & Robert Cohen, Sally & Jim Rothkopf

LEONARD SPRINGER, z'l

Devra Jaffe-Berkowitz, Parry, Zoë & Andrew Berkowitz, Marsha Colten & Robert Cohen, Maxine & Jay Freilich, Malerie Yolen Cohen & Jeff Cohen

LESTER HALPERN, z'l

Sue Frieden, Susan & Art Greenwald, Marsha Colten & Robert Cohen

SHIVA NOTICES AVAILABLE ON-LINE

Congregants who are looking for shiva information can now quickly look online instead of searching their inbox for the announcement or calling the synagogue office. Just go to TBE's website (www.tbe.org) and click "Shiva Notices" under the WHAT'S NEW menu.



REMEMBERING OUR LOVED ONES



Robin, Jarad & Spencer Evans **BEATRICE ABRAHAM**
 Gail & Jack Abrams **HARRY ABRAMS**
 Barbara & Stan Friedman **NATHAN ALIENTUCH**
 Judy & Robert Amster **DINA & MAX AMSTER**
 Mindy, Jeff & Stephanie Hausman **JEAN & DAVID ANIS**
 Melanie Massell..... **FRANK D'ANDREA**
 Maxine & Jay Freilich & Family **KARL ARONSON**
 Maxine & Jay Freilich & Family **RICHARD ARONSON**
 Meredith & Eric Reuben **GERALD BAUM**
 Meredith & Eric Reuben **SADYE BAUM**
 Mitchell Nadel Family **BETH BENNETT**
 Rita & Michael Buttermann **GRETE BERKOWITZ**
 Nancy Greene **DEBORAH BERMAN**
 Stacy & Don Cooper **JUDY COOPER**
 Lori & Stuart Ratner **IRVING EDELSTEIN**
 Ellen Bromley & Family **SIDNEY EPSTEIN**
 Evelyn & Bruce Kahn **MARGOT NEU EPSTEIN**
 Ronnie & Edward Fein **GEORGE FEIN**
 Beverly Ferber & Family **AUGUSTA FERBER**
 Nancy & Brad Benjamin..... **LOIS & HAROLD FINK**
 Tomskey Family **LOIS & HAROLD FINK**
 Maxine & Jay Freilich & Family.... **RUTH & SEYMOUR FREILICH**
 Catherine & Robert Friedman **ELDA FRIEDMAN**
 Marilyn & Mitch Sofer **STANLEY GALLER**
 Karen, Phil, Maura & Robert Welt..... **JOHN GAULT**
 Stanley Gershman **SARAH GERSHMAN**
 Barbara Malloy **THELMA GLAZER**
 Joanne & Marshall Goldberg **ARTHUR GOLDBERG**
 Lorelee & Phil Granowitz **IRVING GRANOWITZ**
 Myra & John Graubard **DAVID GRAUBARD**
 Nancy Greene **FLOYD GREENE**
 Denise & David Greenman **MARTIN GREENMAN**
 Steven Grushkin & Family **MERVIN GRUSHKIN**
 Leonor Lopez **JOSÉ HALPERN**
 Juli Harris **WILLIAM HARRIS**
 Harriet & Fred Dulaney..... **LEWIS HELD**
 Cathy & David Satz **ROBERT HELZICK**
 Betsy & Kevan Herold **PEARL HEROLD**
 Madge & Michael Kellick **ELMER HUPPERT**
 Jerry Jacobs & Family **MINNIE JACOBS**
 Herb Kahan **SADIE KAHAN**
 Ann & Julius Lasnick **JULES KAPLAN**
 Madge & Michael Kellick **IDA KELICK**
 Adrienne, Ben & Peter Kirschenbaum **ROBERT KIRSCHENBAUM**
 Ilene & Michael Koester **ALLAN KOESTER**
 Susan & Richard Blomberg **RENÉE & KURT KONIGSBACHER**
 Susan & Richard Blomberg **LOUIS KONIGSBACHER**
 Sharon & Steven Katz **FRANN KRAVATS**
 Samuel, Hal & Robert Kravitz **JACK KRAVITZ**
 Ilene, Jim, Barry & Howard Locker **BERNARD KWESKIN**
 Ilene, Jim, Barry & Howard Locker **ROSE KWESKIN**
 Allan & Roni Lang **BESS ROSEN**
 Harriet & Sy Weinstein **HILDA LERNER**
 Myra & John Graubard **REUBEN LEVIN**
 Ilene & Michael Koester **MORTON LEWIS**
 Barbara & Steven Rothstein **EVELYN & EDWIN LIEBERFARB**
 Alan Locker **MEYER LOCKER**
 Stephanie & Larry Sherman..... **ROBERT MALIN**

Laura Markowitz **ROSALIE MARKOWITZ**
 Simon Epstein **LEON MARLOWE**
 Barbara Brafman & Larry Stein **JEANNETTE MOTT**
 Carolyn Nadel-Farin & Phil Farin..... **KENNETH NADEL**
 Ellie Mirne..... **ARTHUR NUSSDORF**
 Sandy & David Oberhand **EMANUEL OBERHAND**
 Rhoda & Sheldon Pearlman **LENA & JOSEPH PEARLMAN**
 Fran & Bob Plansky **PAUL PLANSKY**
 Phyllis Gofstein **FRANCES & JACOB REGELSON**
 Karen Resnick **DAVID RESNICK**
 Lori & Stuart Ratner **PAUL ROBBINS**
 Lisa & Michael Rome **HOWARD ROME**
 Barbara & Steven Rothstein **IRVING ROTHSTEIN**
 Judy Schneiderman **RUTH ROSENBERG**
 Joyce & Lewis Slayton **FRANKLIN ROSNER**
 Vicki & Mark Kobliner **SAMUEL ROUSSO**
 Laurie & Dan Schacht..... **GARY SCHACHT**
 Barbara & Edward Drotman **MICHAEL SCHMALL**
 Carol Schwartz & Family **EDWARD SCHWARTZ**
 Lori & Stuart Ratner **YETTA SCHWARTZ**
 Allen & Carol Krim **ANNA & LOUIS SEAVER**
 Roslyn & Merritt Nesin **MORRIS SHAPIRO**
 Linda Simon **JAY SIMON**
 Joyce & Lewis Slayton **PAUL SLAYTON**
 Phyllis & Harvey Walzer **ESTHER SMALL**
 Susan & Larry Holzman..... **CHARLES SNIPPER**
 Marilyn & Mitch Sofer **GERTRUDE SOFER**
 Gail Solomon Hecht & Harvey Hecht..... **ESTELLE & SAMUEL SOLOMON**
 Magida Family **CELIA SOLOVE**
 Lori & Stuart Ratner **ANNIE STEINBERGER**
 Hope Stanger & Brian Steranka **DONNY STERANKA**
 Gail & Bruce Stone..... **SADIE STONE**
 Ronnie & Edward Fein **LILY VAIL**
 Phyllis & Harvey Walzer **SOPHIE & RUDOLPH WALZER**
 Barbara & Stan Friedman **LILLIAN WARSAW**
 Shari & Sandy Weisz **PAMELA WEISZ**
 Debra & Stephen Pollack **ESTHER WINTHROP**
 Donna Wolff..... **DAVID WOLFF**
 Daniel J. Wolfson Family..... **GERTRUDE E. WOLFSON**
 Daniel J. Wolfson Family..... **STEPHEN A. WOLFSON**
 Nancy Wolfson & Family **GERTRUDE WOLFSON**
 Malerie Yolen-Cohen & Jeff Cohen..... **BURTON YOLEN**

WE MOURN THE PASSING OF...

EMANUEL (MANNY) ROTHMAN, father of Joseph Rothman
MIO MIRIAM ANN FREDLAND, sister of Daniel Fredland
JOEL KAUFMAN, brother of Mark Kaufman
MAXINE JUDD, mother of Samuel Judd
FAINA LIKVORNIK
JULIUS SHENKER, father of Caroline Kassel
MARJORIE ROSENTHAL, mother of Robert Rosenthal
MAX SCHNEIDER, father of David Schneider
PHYLLIS SIEGEL, mother of Michelle Marrinan
RICHARD LEHRFELD, father of Andrew Lehrfeld
DONNA RAMME, sister of Judith Dalgin Suchin
LEONARD SPRINGER, father of Fred Springer
LESTER HALPERN, father of Miriam Sosnick

HOW WILL YOU ASSURE JEWISH TOMORROWS?



We are all responsible for the continued vitality of the Jewish organizations important to us.



TEMPLE BETH EL
350 Roxbury Road
Stamford, CT 06902
www.tbe.org



To create your Jewish legacy contact: Steven Lander
execdir@tbe.org • 203-322-6901, ext. 304

THE TBE 100 MITZVAH PROJECT

The TBE 100 Mitzvah Project provides opportunities for congregants to honor TBE's centennial through the performance of *gemilut hasadim* (acts of loving kindness) that help charitable organizations in need of volunteers and non-monetary contributions.

Mitzvah Opportunities at the Schoke Jewish Family Service of Fairfield County

- **Work at the kosher food pantry at SJFS.** Distribute food during walk-in hours: Monday - Wednesday, 10:30 am-12:30 pm. Organize and maintain the pantry: Monday - Friday, 9 am - 4 pm.
- **Deliver meals and food items** to homebound clients. Time is flexible.
- **Participate in Mitzvah Monday** with your kids on the third Monday of each month (Mar 16, Apr 20, May 18 ...) from 3 pm-5 pm. Bring kosher food items to the pantry and help stock shelves. GREAT for teens!
- **Visit a homebound client** for a "friendly visit" to alleviate loneliness. Time is flexible.
- **Donate food and non-food items.** Items can be dropped off at the TBE office or at SJFS.

If you are interested in doing one or more of these mitzvahs, please contact Jill Knopoff at (203) 921-4161. Don't forget to mention you're from TBE.

After completing a mitzvah, please send a note to mitzvah100@tbe.org with the name or names of the family members who participated, the mitzvah, and a photo if possible.

G&H

GARELICK & HERBS

FOR EVERY OCCASION



Kosher dairy available:

SOUTHPORT • WESTPORT • GREENWICH
Mora Mora • The Westport Inn • Birdcraft • Wall Street Theatre
garellickandherbs.com • Catering 203-254-8577

We Capture Your Precious Memories on Video...

Weddings ♦ Bar/Bat Mitzvahs

Proud to be the official TBE videographer

Tom was able to capture the spirit and joy of our B'nai Mitzvah service and party in a video we will always treasure. He was also a pleasure to work with from start to finish.

Jared Finkelstein

If you are looking for a videographer, look no further! Tom was a delight to work with and the finished product was incredible. He created separate videos of my daughter's Bat Mitzvah service and celebration and captured all aspects of the joy of the day.

Jill Teich

Thomas Pace, Jr. ♦ 203.335.0168
T & J Video Service

We also transfer home movies/video to DVD.

ART GREENWALD

President

INTEGRATED PROTECTION SERVICES, LLC
320 Boston Post Road, Suite 140 DARIEN, CT 06820
Tel: 203.322.0772

WWW.INTEGRATEDPROTECTIONSERVICES.COM

**SYSTEMS AND SERVICES FOR SECURITY
AND FIRE PROTECTION**
SERVING CONNECTICUT AND NEW YORK
COMMERCIAL AND RESIDENTIAL



SLOANE COOPER and OWEN HERZ
CELEBRATE YOM HA'ATZMAUT



BETH TORAH KOSHER CATERERS

Glatt Kosher Custom Catering

**Catering for all occasions, on-premises
or off-premises at location of your choice.**

American, Middle Eastern & International foods.

China, Silver, Linens, Waiters & Bartenders

106-06 Queens Blvd.
Forest Hills, NY 11375
Phone: (718) 261-4775
Fax: (718) 261-4607

abel

CATERERS, INC.

The Kosher Catering Experts 

www.abelcaterers.com

We cater to you!

Abel's innovative
chefs create
unique menus
to fit your tastes
and budget.

203.389.2300

Connect with us



Tom Gallagher
Owner

לדור ודור
L'Dor V'Dor

from generation to generation

Locally owned and operated.
Call us for personal and affordable service!

203.359.9999

Our Family has been serving Your Family for generations!



Thomas M. Gallagher
Funeral Home

Your Hometown Jewish Funeral Home

453 Shippan Ave. | Stamford, Connecticut 06902 | tom@gallagherfuneralhome.com
Not affiliated with Leo P. Gallagher Funeral Home

FETHI PHOTOGRAPHY

cell: 914-629-2204
fethic@me.com
www.fethiphotography.com

Experience working with TBE for over 25 years.

Ask your friends!

THE DEADLINE FOR THE
JULY-AUGUST 2020 ISSUE
OF THE TEMPLE BETH EL BULLETIN IS:
JUNE 1, 2020

Artists' Market

EXTRAORDINARY ART & FRAMING

American Crafts: Glass, Wood, Ceramics & Jewelry
Sophisticated Judaica: Mezuzahs, Menorahs, & More

Expert Frame Design and Manufacturing on Premises
"from the simple to the extraordinary"

Fine Contemporary Photography & Original Graphics
Specialist in M. C. Escher Original Masterworks

www.ArtistsMarket.com

163 Main Street, Norwalk

203.846.2550

✓+ Math Tutoring SAT & ACT Preparation

I. Jeff Turshen, Ph. D.

- All Levels of Math - Middle School, High School (Basic to Advanced Placement), and College
- Experienced Teacher - High School & College

References provided upon request

203-323-3872

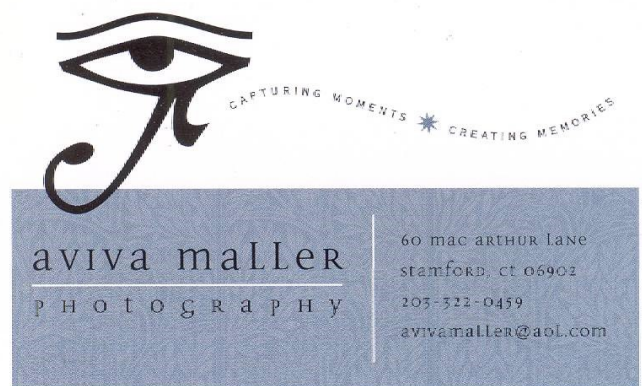
IJTurshen@aol.com



A Full Service Production Company:

- Event Decor
- Event Management
- Live Sound
- Video and Photography
- Rigging and Staging
- Webcasting
- Lighting
- Non-Profit Events
- Trade Shows and Product Launches
- AV Equipment Rental
- Drone Imagery Services

25 Viaduct Road Stamford, CT 06907 P: (203) 517-4688
www.kpeventsgroup.com



Check out our special website
Dedicated to TBE's event space

www.thebigeventspace.com

Please let your friends and business
associates know how we can fulfill their
celebratory and meeting needs.



MADDY SHAPIRO

Sales Associate
REALTOR® of the Year 2011

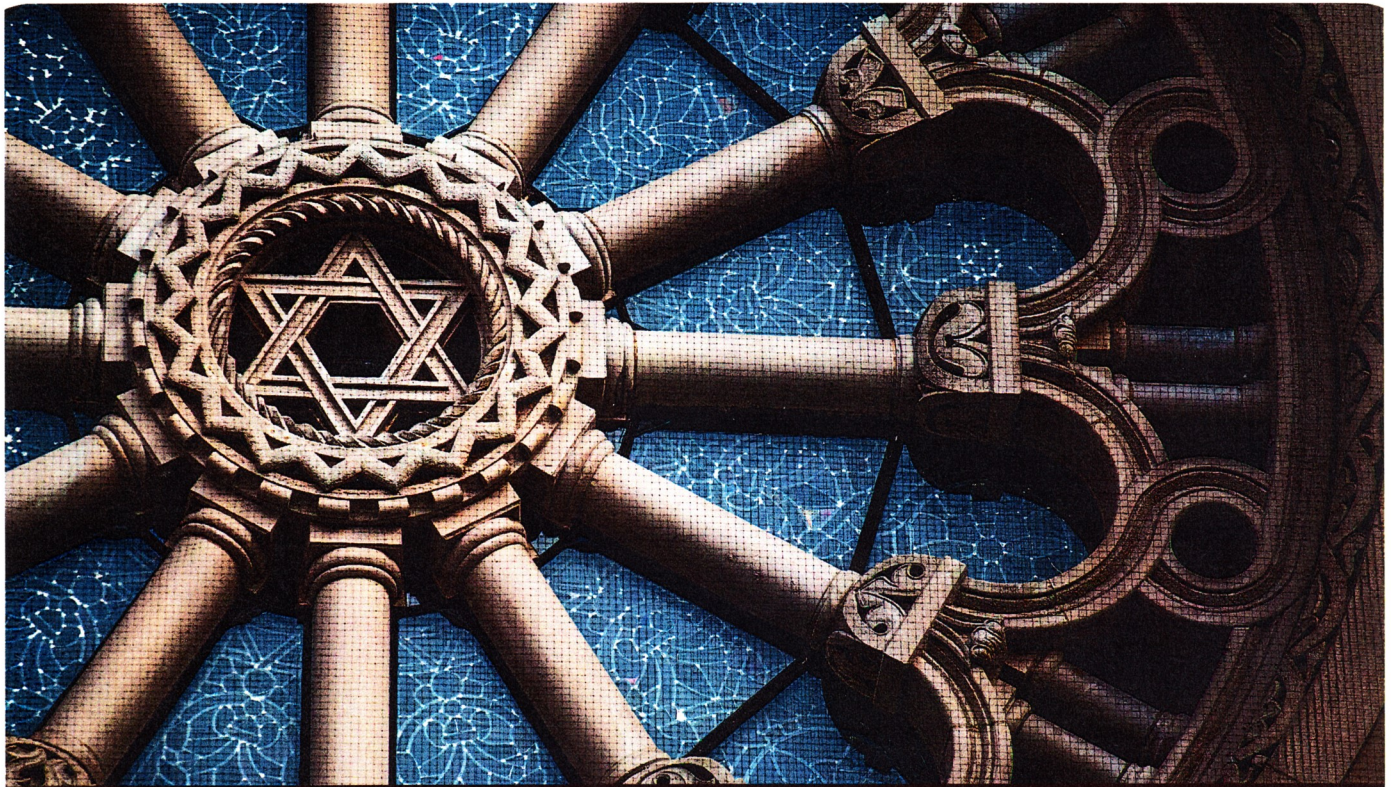
203-940-5569 CELL
203-329-9792 HOME OFFICE
Maddy.shapiro@cbmoves.com



Operated by a subsidiary of NRT LLC



www.maddyshapiro.com



TAKING CARE OF EACH OTHER
is what community is all about.

WE'RE PROUD TO SERVE our community with personal, compassionate care.
As your Dignity Memorial® professionals, we're dedicated to helping families create
a unique and meaningful tribute that truly honors the heritage of the Jewish faith.

We invite you to contact us today to learn more.

Dignity®
MEMORIAL

✧ LIFE WELL CELEBRATED™ ✧

LEO P. GALLAGHER & SON

FUNERAL HOME

STAMFORD

203-327-1313 LeoPGallagherStamford.com