

Temple Beth El Bulletin

A Conservative, Inclusive, Spiritual Community

www.tbe.org

Volume 47 Issue 4 (bi-monthly)

July - August 2020

Tammuz/Av/Elul 5780

WOW! WHAT A YEAR! A YEAR AT TBE 2019-2020



JULY

Kabbalat Shabbat Services, Shabbat Services, D'verei Torah by: Rabbi Gerry Ginsburg, Meryl Silverstein, Morning Minyan, Active Shooter Walk-Thru, Young Families Pop-Up Picnic, Young Families Schmooze and Stroll, Sisterhood Board Meeting, Reyut delivers Shabbat bags to patients in Stamford Hospital, Board of Trustees Meeting, Executive Committee Meeting

AUGUST

Kabbalat Shabbat Services, Shabbat Services, D'verei Torah by: Meryl Silverstein, Rabbi Gerry Ginsburg, Suzanne Stone, The Shabbat Experience, Morning Minyan, Tisha B'Av Services, TBE Connects Meeting, 100th Anniversary Task Force Meeting, Active Shooter Walk-Thru, Sisterhood Board Meeting, Executive Committee Meeting



SEPTEMBER

Kabbalat Shabbat Services, Shabbat Services, D'var Torah by Rabbi Gerry Ginsburg, B'nai Mitzvah: Sidney Marks, Michael Luther, Madelyn Winarsky with Rabbi Vicki Axe, ShaBaBimBam, Morning Minyan, Selichot Service, Build the High Holidays Bimah, Annual Beth El Cemetery Memorial Service, Rosh Hashanah Services, Tashlich, Annual High Holiday Food Drive, Sisterhood High Holiday Food Sale, BBQ and Barachu, Religious School Faculty Meeting, Hyacinthe and Harold E. Hoffman Memorial Lecture, High Holidays Choir Rehearsal, Rabbi Hammerman meets with 6th Grade and Parents, Young Couples BBQ at the Shulman's Home, Beth El Cemetery Association Meeting, TBE Ambassadors Meeting, Ask the Rabbi with Rabbi Hammerman and Jami Fener, Young Families Sunday Funday, Religious School resumes, Madrichim Meeting, Israeli Election Night, Empty Nesters Visit The Museum of Jewish Heritage, Sisterhood Cookbook Meeting, Sisterhood Board Meeting, Sisterhood By-Laws Committee Meeting, 8th Grade Planning Meeting, Sisterhood Planning Committee, Parents' Night Out, Journey through the High Holidays with Rabbi Gerry Ginsburg, New-Member Dinner at the Hammerman's home, Board of Education Meeting, Board of Trustees Meeting, Executive Committee Meeting



OCTOBER



Kabbalat Shabbat Services, Shabbat Services, Show Up for Shabbat, Shabbat-in-the-Round with Cantor Deborah Katchko Gray, Rosh Hashanah Services, Kol Nidrei Services, Yom Kippur Services, Break-the-Fast sponsored by Sisterhood, Sukkot, Shemini Atzeret and Simchat Torah Services, Build the Sukkah, Lulav and Etrog sale, Religious School decorates the sukkah, Sukkah Hop at the Hammermans, High Holidays Choir Rehearsal, Leadership Circle Dinner at the home of Sari and Alan Jaffe, Sisterhood Clothing Drive, ICRF and Men's Club Breakfast and guest speaker, B'nai Mitzvah 2020 Parents Meeting, 4th Grade Religious School visits Fairgate Farm, Adult B'nai Mitzvah Class, Adult Hebrew Reading Class, Jewish India with Ruth Greenfield, 100th Anniversary Committee Meeting, Amy Spitalnick, guest speaker, ShaBaBimBam, Kids-in-the-Round, Morning Minyan, Sisterhood Paid-Up Membership Brunch, Reyut delivers Shabbat bags to patients in Stamford Hospital, Sisterhood Board Meeting, Board of Trustees Meeting, Executive Committee Meeting

Continued on page...8

TEMPLE BETH EL - BOARD OF TRUSTEES**EXECUTIVE COMMITTEE**

Lisa Manheim, President	917-690-2712
Carl R. Weinberg, Immediate Past President	203-322-8675
Scott Krowitz, First Vice President	917-902-1447
Stan Friedman, Vice President	203-322-0416
Dana Horowitz, Vice President	203-321-0018
Devra Jaffe-Berkowitz, Vice President	203-978-1113
Arthur Laichtman, Vice President	203-461-8223
Christopher Maroc, Vice President	914-215-2025
Lael Shapiro, Vice President	203-273-8380
Daniel Young, Vice President	203-975-1990
Robert S. Cohen, Treasurer	203-329-9622
Emily Klein, Secretary	347-901-0228

ADVISORS

Mia M. Weinstein	203-595-0528
Steven Sosnick	203-219-0270

TRUSTEES

David Amsellem	203-832-4335
Lori Bushell	203-962-2974
Jeffrey Cohen	203-358-9911
Kahla Cooper	203-554-7888
Aron Davidson	203-274-6363
Jon Eisenstein	203-321-8369
Leslie Glenn	203-273-7215
Susan Greenwald	203-322-0771
Michael Handel	203-981-1987
Julie Rosenberg	203-975-8880
Irma Ross	203-246-4880
Barbara Rothstein	203-614-8053
Judy Schneiderman	203-569-4969
I. Jeffrey Turshen	203-323-3872

SISTERHOOD PRESIDENT

Karen Resnick	203-968-8708
---------------	--------------

MEN'S CLUB PRESIDENT

Josh Levine	203-276-4935
-------------	--------------

PAST PRESIDENTS

Gordon Brown	203-276-8688
Rosalea Fisher	203-323-1449
Fred S. Golove	203-322-0295
Herbert Kahan	203-595-9981
Alan Kalter	203-322-8220
Peter K. Kempner	203-968-8079
Mark Lapine	203-329-9879
Gary P. Lessen	203-322-7617
Sylvan D. Pomerantz	203-968-0605
Brian Rogol	212-531-8203
Eileen H. Rosner	203-461-0506
Mia M. Weinstein	203-595-0528

WHERE TO FIND IT

Joshua Hammerman, Rabbi.....	Page 3
July-August Service Schedule	Page 4
Sidney G. Rabinowitz, Hazzan Emeritus	Page 5
Young Families	Page 5
Sisterhood	Page 6-7
Beth El Cares	Page 11
TBE 100 th Anniversary	Page 12-13

COMMITTEE CHAIRPERSONS**Board of Education**

Kahla Cooper	203-554-7888
--------------------	--------------

Empty Nesters

Sue and Carl Shapiro	203-353-0657
----------------------------	--------------

Facilities

Lael Shapiro.....	203-273-8380
-------------------	--------------

Finance

Robert S. Cohen	203-329-9622
Susan Frieden.....	203-869-4282

Fund Raising

Arthur Laichtman	203-461-8223
------------------------	--------------

High Holy Days

Jeff Cohen	203-358-9911
------------------	--------------

High Holy Days Food Drive

Sharon Turshen	203-323-3872
----------------------	--------------

Human Resources

Carl Weinberg	203-322-8675
---------------------	--------------

Marketing and Communications

Stan Friedman	203-322-0416
---------------------	--------------

Membership Committee

Chris Maroc.....	914-215-2025
------------------	--------------

Mitzvah Garden

Harriet Weinstein.....	203-353-8873
------------------------	--------------

Project Ezra

Joy Katz	203-329-3359
----------------	--------------

Reyut Committee

Melanie Massell	203-324-7190
-----------------------	--------------

Ritual Committee

Devra Jaffe-Berkowitz	203-978-1113
-----------------------------	--------------

Social Action Committee

Dana Horowitz	203-321-0018
---------------------	--------------

OUR STAFF IS MOST EAGER TO ASSIST YOU

Monday - Thursday, 9am - 5:00 pm | Friday, 9am - 2:00pm

Phone: 203-322-6901 Fax: 203-322-0532

Joshua Hammerman, Rabbi (rabbi@tbe.org)	ext. 307
Katie Kaplan, Cantorial Soloist (cantor@tbe.org)	ext. 315
Sidney G. Rabinowitz, Hazzan Emeritus (hazzan@tbe.org)	ext. 309
Steven Lander, Executive Director (execdir@tbe.org)	ext. 304
Lisa Gittelman Udi, Director of Congregational Learning (eddir@tbe.org)	ext. 305
Rabbi Gerry Ginsburg, Pastoral Support (rabbiginsburg@tbe.org)	ext. 300
Jami Fener, Engagement Coordinator (engagement@tbe.org)	917-680-9413
Beth Silver, Religious School & Campaign Administrative Assistant (education@tbe.org campaign@tbe.org)	ext. 306
Linda Rezak, Bookkeeper (lindar@tbe.org)	ext. 302
Mindy Rogoff, Temple Secretary (office@tbe.org)	ext. 301
Beth Silver, Secretary (adminassist@tbe.org)	ext. 308
Alberto Eyzaguirre, Facilities Manager (maint@tbe.org)	ext. 314
Sisterhood Gift Shop (bfberman@gmail.com)	203-329-7750

ON ONE FOOT

It's been suggested that if 2020 were a wine, we would long ago have sent it back. Or if it were a 90 day trial, we would have cancelled it.

It's hard to make light of a period of time that has been so fraught, but sometimes a little humor doesn't hurt.

Since early March, I've sent over 60 communiques to you, first called "Coronavirus Updates," then "From the Rabbi's Bunker," and finally, "In This Moment." Different names but similar themes. It's interesting to look back occasionally, to see where we've been. All of them are archived at <https://www.joshuahammerman.com/>

Our congregation has done very well, continuing to serve our membership and community, and the world beyond. I quipped at our annual meeting that we've always prided ourselves at being a "synagogue without walls." Well, for the past few months we've had to truly become one. Through Zoom events – services, meetings, shivas, classes, seders, even a Bar Mitzvah – via written communications, videos and calls, we've found new ways to connect.

Nicholas Christakis wrote in the Washington Post:

But just as the coronavirus's spread has forced us to consider suppressing our democratic impulses, it also calls on us to suppress our profoundly human and evolutionarily hard-wired impulses for connection: seeing our friends, getting together in groups or touching each other. Even spouses in the same household are implausibly advised to stay physically distant if one of them is sick. None of this comes naturally to us, nor is it easy. In my own case, since I have spent much of my professional career studying marriage, friendship and social networks, and the health benefits they offer, I am finding it ironic to be strongly advising against human contact - but that's what I'm doing.

We managed to surmount those challenges. And then, on Memorial Day, when Black Lives Matters became the refrain of the late spring, we rose to that challenge too.

Perhaps no half year in our lifetimes has been so challenging – or so consequential.

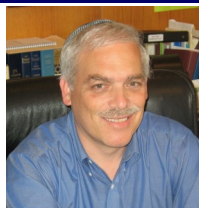
What will we take from this crucible – once we emerge, once the dust settles, whenever that may be?

I'm going to take some time during July to reflect on just that. You will be in the able hands of our new cantor, Katie Kaplan, along with Rabbi Gerry Ginsburg and our lay and professional leadership, including our new president, Lisa Manheim. And I'll be just an email away.

As we dive into the summer, one major preoccupation of our team will be (and already has been) the upcoming High Holidays, which will be almost completely virtual, as you've been hearing, but also completely spectacular. There are many things that we will miss – that I will miss – but so much that we will be able to do that we've never done before.

Why not come together physically? In the end, our leadership decided that it would be unwise for us to encourage even a single person to take unnecessary risks.

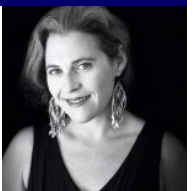
Continued on page 10...



WE WELCOME KATIE KAPLAN, CANTORIAL SOLOIST

Carl Weinberg, President of TBE, has announced the appointment of Katie Kaplan as the new Cantorial Soloist of Temple Beth El.

"We are so pleased that Katie Kaplan will become TBE's full-time Cantorial Soloist on July 1," said Weinberg. "Katie has served our congregation through the years in many ways, including music teacher in our Religious School, prayer leader, and cantorial soloist for last year's High Holiday services. Building on her experience as a professional educator and academically trained musician, Katie will strengthen TBE's commitment to music as a powerful force for building spiritual community."



Growing up in Rutland, Vermont, Katie's passion for Judaism began at an early age and her musical training evolved on a parallel track with her spiritual journey. Her education has been a vital component to her preparation for the role of cantor. In addition to pursuing rabbinic/cantorial studies at The Academy for Jewish Religion in Yonkers, NY, Katie has participated in several Jewish leadership programs including the Davennen Leadership Training Institute, Song Leader Boot Camp, The Women Cantors' Network conferences, and songwriting retreats. She holds a Bachelor of Music in Vocal Performance from New York University and a Master of Science in Education from the University of Bridgeport.

She has served congregations throughout New England and New York as a cantorial soloist, prayer leader and music educator.

Katie's career also includes extensive classroom and private studio experience with students of all ages. Currently completing her fourteenth year as choral director and Middle School Music Department Chair at St. Luke's School in New Canaan, she has coached choral ensembles and individual singers to perform for festivals, international concert tours, commencement ceremonies, musicals, and beyond. As a pioneer of programs for teens to discover their voices, Katie connects students with forms of self-expression as part of her approach to *Tikkun Olam*. As a Jewish educator, she is deeply passionate about *tefillah* and provides students and adults with accessible translations and personalized approaches that can be integrated into their daily lives.

At TBE, she has served as High Holiday *Shaliach Tzibbur*, cantorial soloist, music educator, and song leader in the Religious School while collaborating with the Temple Beth El team to create innovative services and introducing the congregation and students to a variety of new and traditional Jewish music.

Rabbi Hammerman, spiritual leader of TBE, stated, "I've known Katie Kaplan for almost 20 years, and I'm delighted to welcome her as our next full-time Cantorial Soloist. She has always been a superb professional musician, highly motivated spiritual seeker, caring teacher and committed Jew. Now, she can put all of that together. Our synagogue has been fortunate to have had a superb and diverse array of cantors these past few decades, and she has learned from each of them. The engagement of Katie Kaplan ushers in a new era for TBE music."

Katie and her husband Eric live in Stamford with their two children, Ethan and Vivian, and have been members of Temple Beth El for 17 years.



SHABBAT AND FESTIVAL SERVICES



JULY - AUGUST

Friday, July 3

Kabbalat Shabbat 6:00 p.m. on Zoom

Shabbat, July 4

Shabbat Services 10:00 a.m. on Zoom

Friday, July 10

Kabbalat Shabbat 6:00 p.m. on Zoom

Shabbat, July 11

Shabbat Services 10:00 a.m. on Zoom

ShaBaBimBam 11:00 a.m. on Zoom

Family Havdalah 6:30 p.m. on Zoom

Friday, July 17

Kabbalat Shabbat 6:00 p.m. on Zoom

Shabbat, July 18

Shabbat Services 10:00 a.m. on Zoom

Friday, July 24

Kabbalat Shabbat 6:00 p.m. on Zoom

Shabbat, July 25

Shabbat Services 10:00 a.m. on Zoom

Wednesday, July 29 - Erev Tisha B'Av

Tisha B'Av Service 8:00 p.m. (time is tentative) on Zoom

Friday, July 31

Kabbalat Shabbat 6:00 p.m. on Zoom

Shabbat, August 1

Shabbat Services 10:00 a.m. on Zoom

Friday, August 7

Kabbalat Shabbat 6:00 p.m. on Zoom

Shabbat, August 8

Shabbat Services 10:00 a.m. on Zoom

ShaBaBimBam 11:00 a.m. on Zoom

Friday, August 14

Kabbalat Shabbat 6:00 p.m. on Zoom

Shabbat, August 15

Shabbat Services 10:00 a.m. on Zoom

Friday, August 21

Kabbalat Shabbat 6:00 p.m. on Zoom

Shabbat, August 22

Shabbat Services 10:00 a.m. on Zoom

Friday, August 28

Kabbalat Shabbat 6:00 p.m. on Zoom

Shabbat, August 29

Shabbat Services 10:00 a.m. on Zoom

Congregational Havdalah Service 8:00 p.m. on Zoom

100 TEMPLE BETH EL

CELEBRATING OUR FIRST 100 YEARS

WATCH FOR DETAILS OF UPCOMING EVENTS

Shabbat Services Celebrating our Past-Presidents
date to be determined

100th Anniversary Event
Sunday, September 13

Shabbat Services Celebrating Our Members
Who Joined 1973-2000

Shabbat Services Celebrating Our Members
Who Joined 2001-2019

Celebration Finale

WOULD YOU LIKE TO BE A GABBAI?



Training available!



Please contact Rabbi Hammerman
at rabbi@tbe.org.

EMMET'S PLAYGROUND GROUND BREAKING CEREMONY June 28, 2020





Services and Events

**VIRTUAL
SHABABIMBAM!**

LIVE ON ZOOM

A Shabbat program for families
with children 5 and younger
(older siblings welcome)

**Shabbat mornings
11am - 12pm**

led by Natasha Fenster & Steve Epstein
July 18 and August 8 on ZOOM



Havdalah with the Animals!
Saturday, July 11 @ 6:30 pm

featuring Cantorial Soloist Katie Kaplan



Bring your pet or favorite stuffed animal
as we say goodbye to Shabbat
and welcome the new week together!



Zoom link: <https://us02web.zoom.us/j/89923174448>
Meeting ID: 899 2317 4448



For password, contact Jami Fener
youngfamilies@tbe.org



Congregational Havdalah on ZOOM
Saturday, August 29 at 8:00 pm



SAVE THE DATE!



Kurt Weill was born in Germany on March 2, 1900, the son of a cantor. Un-theatrical music was part of his earliest training. He began to study music at 14 and in 1918 went to Berlin to study with Humperdinck (not the singer).

In 1919 he became a conductor of opera, operettas, ballets and concerts. His tasks also included compositions of incidental music for plays.

He had to support himself by playing the piano in an obscure Bierkeller from evening until dawn. His earnings depended upon the generosity of the patrons.

Kurt Weill's strong attachment to the musical theatre is one of the baffling mysteries of the creative spirit, for there is nothing in his early background to account for it.

In 1937, as the world moved closer to war, a young American Zionist named Meyer Weisgal wanted to put on a show. But, not just any show, a spectacle with a cast of hundreds, a set that required a theatre to take out its orchestra pit, and a composer and librettist who could include the Torah to tell the story of the Jewish people. Called "The Eternal Road," though translated from German as "The Road of Promise," the production ran for 153 performances in Germany, clocking in for more than four hours.

The composer Kurt Weill had already gained notoriety for his "Three Penny Opera." The "Road of Promise" was very much a work for that moment.

Kristallnacht was a year away. Jews in Germany were getting uneasy, wrestling with whether to leave or to stay, for many were cultured and patriotic German citizens. The gargantuan production was meant not just for entertainment, but to raise awareness, and maybe to raise funds for the Zionist cause and to highlight the plight of the Jewish people. Then it disappeared.

In 1999, the work returned to the German stage and soon after, Ed Harsh, a writer, composer and trustee of the "Kurt Weill Foundation," reshaped the product into an oratorio, editing out more than an hour of dialogue, music, the huge sets and the attendant spectacle.

The two-and-a-half-hour rendition of "The Road of Promise" opened the University of Maryland School of Music's year-long "Kurt Weill Festival." It featured a full orchestra, a 92-member chorus, altogether, more than 200 students and alums, as well as principal singers from the university's graduate opera studio program. The piece remained massive, both in its musicality and in its dramatic material drawn from biblical retellings of the patriarchs and matriarchs, set to Weill's broadly dramatic score.

As a composer, Weill was trained in opera and classical composition, was a populist, a modernist, and avant-gardist. To today's ear it sounded like a bit of all of Weill's influences. Think high-end 1940 movie music on steroids, with a touch of cabaret, art songs on Broadway. And if you listen closely enough, you may hear an inkling of Jewish liturgy – remember, his father was a cantor.

The "Kurt Weill Festival" concluded in April 2019.



Hazzan Sidney Rabinowitz

MAZAL TOV TO...

Ruth Alpert on the birth of a great-granddaughter, Zoë Julia, born to Sarah and Lenny Paritsky.

Carol Battin and Sam Meyer on the birth of a grandson, Jack Samuel Hazan.

Natalie and Alex Feld on the birth of a son, Sydney Maxwell.

Risa Raich for being honored by the JCC with the Hyacinthe & Harold E. Hoffman Humanitarian Award.

Lori and Stuart Ratner on the birth of a granddaughter, Emmy Dylan, born to Nikki and Evan Ratner.

Rhonna and Brian Rogol on the birth of a grandson, Hayden Raymond, born to Sharon and Josh Rogol.

Lindsay and Corey Shulman on the birth of a daughter, Bret Eliza, and to the proud grandparents Rhonda and Evan Goldenberg.

Judy and Bob Amster on the marriage of their daughter Hillary to Gabriel Pontones.

Donna Wolff on becoming the Executive Director of Starfish Connection, Inc.

Dr. Allison Ostroff for accepting the Fred Weisman Tikkun Olam Award on behalf of front line health care workers in our congregation.

Russel Roloff for accepting the Fred Weisman Tikkun Olam Award on behalf of front line service workers in our congregation.

Ethan Moskowitz on receiving the Teen Volunteer Award from Temple Beth El.

Michael Rose on receiving the Teen Volunteer Award from Temple Beth El.

Zöe Jaffe-Berkowitz on receiving the Edward J. Kaplin Memorial Scholarship given by TBE Men's Club.

Ethan Moskowitz on receiving the Edward J. Kaplin Memorial Scholarship given by TBE Men's Club.

Bracha & Jerry Silber on the marriage of their daughter, Faye, to Zach Covan.

Paula Shulman on receiving the national Woman of Achievement, Promotional Products award from the Promotional Association International (to be presented January 2021)



Share your family's simcha (engagement, marriage, birth, Bar or Bat Mitzvah of a child or grandchild) and other joyous event. Just contact the TBE office at office@tbe.org or 203-322-6901, ext. 301.

HONORABLE MENSCHEN TODAH RABAH TO OUR TORAH READERS!

LISA GROVE-RAIDER ★ RABBI GERRY GINSBURG
RABBI JOSHUA HAMMERMAN ★ BERT MADWED
JULIE ROSENBERG ★ SUSAN SCHNEIDERMAN
MERYL SILVERSTEIN

SISTERHOOD

Torah Fund Pin for 5780 (2019-2020)



Every year Torah Fund offers a special pin for a donation of \$180. The theme of this year's pin is Chesed - "kindness" or "loving kindness" conveying the deep love of Jewish acts of kindness which are done without thought of reward.

The 5780 (2019-2020) Torah Fund pin depicts a heart surrounded by three circles, one larger than the next. This symbolizes the ever-widening realms of generosity: From family, to community, to the larger world; from North America, to Israel, to the world. As it is said in Psalm 89, "May we build a world of kindness." What message could be more appropriate in today's world? Purchase from Suzanne Stone, suzanneshorn@yahoo.com, 203-866-2273.

LESLIE HEYISON

We express our heartfelt thank you to Leslie for her commitment as she cheered us on for these past three years. Leslie was both Past President and Advisor and chaired many events, both new and old. From the Costume Jewelry Extravaganza, Annual Sisterhood Brunch, Clothing Drive, and Sisterhood Shabbat, she raised money not only for Sisterhood but for TBE. We will miss her on the Board, but luckily she will be involved in many TBE programs, including Sisterhood events.

Leslie, thank you for your hard work, wonderful ideas, and dedication - especially for all your help this past year!!! You will be missed!

The Sisterhood Board

Trivia on Zoom

MAZAL TOV TO THE WINNERS!!!

GEOGRAPHY TRIVIA

Denise Greenman, Kyla Reisman, Dylan Shiff

SPORTS TRIVIA

Jesse Andreozzi, Jay Freilich,
Scott Herckis & Will Herckis

Sponsored by Sisterhood

We are close to our goal of **100 recipes** for Sisterhood's new **cookbook** celebrating TBE's **100th Anniversary**, and we need your help. There is room for **20 more**, so please send your recipes to Fran Ginsburg at ginsstamf@gmail.com as soon as possible.

Thank you in advance!





We were extremely busy this past year planning our Sisterhood events! Not only did we raise money for the many different needs of the Temple, we became friends, met interesting women and enjoyed ourselves. We hope to expand the board next year. Please contact Sisterhood if you are interested!

Our events this year included: Annual High Holiday Food Sale · Break-Fast for over 500 people · Clothing Drive · Annual Sisterhood Brunch · Costume Jewelry Extravaganza · Author and Book Signing Event · Lecture on Amelia Earhart · Cooking in the Kitchen (challah event) · The Period Project · Passover Food Sale (over 100 orders) · Organizing Lecture · Starbucks gift cards to TBE College Freshmen · Gift to Religious School · Donation to Temple Rock · Ruth Messinger lecture sponsor

TBE 100th Anniversary: Donated 100 pieces of Jewelry to a memory care center

Although we had to postpone events such as the show at Curtain Call and our Fashion Show, we created new and exciting events on ZOOM.

ZOOM Events: Organizing for Passover · Geography Trivia (Thank you **Matt Price** for hosting Geography Trivia!! Thank you also to winner **Dylan Schiff**, who donated his winnings to TBE food bank.) · Cooking with Fran Ginsburg · Challah Baking with Lieba Lander · Sports Trivia · Book Discussion *Not Our Kind* - thank you to **Dora Salm** for an exciting, informative event. Due to its success, we plan to have more book groups in the future!

Remember: Always check the Shabbat Announcements for any changes.

The updated Sisterhood By-Laws were voted on in June. We thank **Leslie Heyison, Chair**, and the committee: **Barbara Berman, Barbara Rothstein, Cathy Satz** for your time and commitment working on this worthwhile endeavor!

Over the summer, the Sisterhood Board will be busy planning its 2020-2021 programs. Details to follow in Shabbat announcements and emails. Please contact anyone on the Sisterhood Board if you would like to join us or find out more about us. We meet monthly and would love to increase our Board.

Finally, as the 2019-2020 year draws to a close, I would like to express deep appreciation to **Steve Lander, Stan Friedman, Beth Silver, Mindy Rogoff, Linda Rezak, Alberto Eyzaguirre** and **Rad Vazquez** for their guidance and assistance, and to the Sisterhood Board for making all of this possible. You bring energy and joy to my life and to TBE. Sisterhood is able to support many events thanks to Sisterhood dues and special programs.

Have a wonderful summer! Stay safe! See you on ZOOM and looking forward to seeing you at TBE soon!

With appreciation and joy,
Karen Resnick

On July 1, TBE member **Janet Schneider** will step down as Executive Director of Starfish, after serving the last four years, and will be succeeded by **Donna Wolff**, a Sisterhood Board Member and Starfish mentor for the past three years. Other Starfish Connection mentors from TBE include **Marlyn Agatstein, Jim Benjamin, Rosalea Fisher, Gail G Trell** and more.

If you are interested in learning more about Starfish Connection, please contact Donna at dwolff.starfish@gmail.com.

Sisterhood of TBE Judaica Gift Shop

We are pleased to offer beautiful Judaica items including mezzuzot (for home and wedding), holiday and Shabbat candles, tzedakah boxes, kiddush cups and more. You can special order Judaica items that we don't carry in stock.

For special events, we have tallit, bulk kippahs and tefillin. We no longer carry invitations and stationary.

Please see the window showcases in the upstairs and downstairs lobbies that hold a lovely selection of Judaica items for purchase.

Contact:

Gift Shop Items
Barbara Berman: 203-329-7750
Bfberman@optonline.net

Tallit and Kippahs
Beth Silver: 203-249-7046
adminassist@tbe.org

Torah Fund Cards and Pins
Suzanne Horn: 203-866-2273
suzanneshorn@yahoo.com

***Proceeds Support TBE
and Youth Education!***

Please contact Sisterhood at sisterhood@tbe.org or feel free to call/email a Sisterhood board member with any comments. We love hearing from you and are always looking for volunteers!

Karen Resnick, President
203-536-3115, kmr925@sbcglobal.net

Judy Schneiderman, Treasurer
203-569-4969, jrs2125@optonline.net

Dora Salm, Secretary
203-461-8596, d_salm@yahoo.com

Barbara Berman, Gift Shop
203-329-7750, bfberman@gmail.com

Donna Wolff, Board Member
917-601-1878, donna@wolffmedco.com

Paula Shulman, Board Member
203-461-9396, paulashulman51@gmail.com

Juli Harris, Board Member
203-276-0589, jaharris99@aol.com

NOVEMBER

Kabbalat Shabbat Services, Shabbat Services, Morning Minyan, Family-Friendly Kabbalat Shabbat, Shabbat Unplugged with Cantor Deborah Jacobson, Shabbat Services led by Hazzan Sidney Rabinowitz, Shabbat School Program for Religious School, 7th Grade B'nai Mitzvah Club, Pot Luck Shabbat Dinner, ShaBaBimBam, Kids-in-the-Round, Neshama Carlebach guest speaker and performer, B'nai Mitzvah: Lana Busch, Jonah Rosenberg with Rabbi Vicki Axe, TBE Forum, Young Families BYO Dairy Shabbat Dinner, Midrash with Rabbi Gerry Ginsburg, Adult Hebrew Reading Class, 100th Anniversary Committee Meeting, Reyut with Rabbi Richard Eisenberg, guest speaker, Cantorial Search Committee Meeting, Adult B'nai Mitzvah Class, BabyBimBam Jam Sesh, Game Night for Parents and Young Couples, Sisterhood and Hadassah Book Event, Temple Rock Planning Meeting, Professor Stephen Berk, guest speaker, TBE Midnight Run Meeting, Sisterhood Board Meeting, 7th Grade Sleep Over at the Hammermans, Board of Trustees Meeting, Executive Committee Meeting



DECEMBER



Kabbalat Shabbat Services, Shabbat Services, Morning Minyan, Shabbat-in-the-Round with Cantor Deborah Katchko Gray, Chanukah/Shabbat Dinner, ShaBaBimBam, Kids-in-the-Round, Sisterhood Presents Historian Mark Albertson, Beth El Cares Serves Christmas Dinner at Local Shelters, Adult B'nai Mitzvah Class, Religious School "Help a Family for Hanukkah" joint program with Jewish Family Services, TBE Connects Dinner in Private Homes, Midrash with Rabbi Gerry Ginsburg, Adult Hebrew Reading Class, 7th Grade Mock Brit Milah, Sisterhood Presents Challah Baking with Lieba Lander, Sisterhood Board Meeting, Sisterhood By-Laws Committee Meeting, Cantorial Search Committee Meeting, Beth El Cemetery Association Meeting, Board of Education Meeting, Temple Rock Meeting, Board of Trustees Meeting, Executive Committee Meeting

JANUARY

Kabbalat Shabbat Services, Shabbat Services, Family Kabbalat Shabbat, Shabbat Unplugged with Cantor Deborah Jacobson, D'var Torah by Rabbi Gerry Ginsburg, ShaBaBimBam, Kids-in-the-Round, Shabbat-in-the-Round with Cantor Deborah Katchko Gray, BYO Vegetarian Shabbat Dinner, My Gym for Young Families, TBE Forum, Beyond Dispute with Rabbi Joshua Hammerman, Interfaith Class with Rabbi Joshua Hammerman, Adult Hebrew Reading Class, Adult B'nai Mitzvah Class, 100th Anniversary Committee Meeting, Women's Non-Seder Committee Meeting, Religious School Faculty Meeting, Beth El Cemetery Association Meeting, Beth El Cemetery Association Meeting, Cantorial Search Committee Meeting, Temple Rock Committee Meeting, No Hate No Fear Community Vigil, Board of Trustees Meeting, Executive Committee Meeting



FEBRUARY



Kabbalat Shabbat Services, Shabbat Services, Morning Minyan, D'var Torah by Rabbi Gerry Ginsburg, Shabbat Across American Dinner and Service, Sophie Sigman, Bat Mitzvah, 7th Grade B'nai Mitzvah Club, ShaBaBimBam, Kids-in-the-Round, Shabbat-in-the-Round with Cantor Deborah Katchko Gray, Tu B'Shevat, Beyond Dispute with Rabbi Joshua Hammerman, Contemporary Jewish Questions with Rabbi Gerry Ginsburg, Temple Rock, Word-Wide-Wrap with 7th Grade Students and Families, Tu B'Shevat Ice Cream Seder, Tu B'Shevat Top Chef Challenge, Active Shooter Walk-Thru with Sylvan Pomerantz, BabyBimBam, 100th Anniversary Committee Meeting, Sisterhood Board Meeting, Cantorial Search Committee Meeting, Cantorial Search Advisory Committee Meeting, Adult B'nai Mitzvah Class, Board of Trustees Meeting, Executive Committee Meeting

And then all HELL broke loose!

MARCH



Kabbalat Shabbat Services, Shabbat Services, Morning Minyan, D'var Torah by Susan Schneiderman, Purim, Shabbat Morning Torah Learning and Discussion with Rabbi Joshua Hammerman/Rabbi Gerry Ginsburg on **Zoom**, ShaBaBimBam, Kids-in-the-Round, Purim - The Fabulous Chinese Acrobats, Religious School students make mishloach manot for Jewish Family Service clients, Religious School Goes **Viral - Zoom** School, Heal and Hangout with Rabbi Joshua Hammerman on **Zoom**, Sisterhood presents Mark Baier - Decluttering, Ruth Messinger, guest speaker and Brunch sponsored by Sisterhood and Men's Club, Beyond Dispute with Rabbi Joshua Hammerman in person and on **Zoom**, Contemporary Jewish Questions with Rabbi Gerry Ginsburg, Mitzvah Committee Conference Call, Adult B'nai Mitzvah Class, Board of Education Meeting, Cantorial Search Committee Meeting, Board of Trustees Meeting, Executive Committee Meeting

APRIL

Shabbat morning Torah Learning and Discussion with Rabbi Joshua Hammerman/Rabbi Gerry Ginsburg on **Zoom**, Kabbalat Shabbat Services on **Zoom**, Passover Seder, 1st night, led by Rabbi Joshua Hammerman on **Zoom**, Yizkor Service on **Zoom**, Kindergarten - Grade 2 Model Seder on **Zoom**, ShaBaBimBam on **Zoom**, Kids-in-the-Round on **Zoom**, Yom Ha'Atzmaut on **Zoom**, Guaranteed Minyan on **Zoom**, Shiva Minyan on **Zoom**, Mincha Service led by Rabbi Joshua Hammerman on **Zoom**, Heal and Hangout with Rabbi Joshua Hammerman on **Zoom**, Chol Hamoed Passover Discussion with Rabbi Gerry Ginsburg on **Zoom**, Beyond Dispute with Rabbi Joshua Hammerman in person and on **Zoom**, Passover Food Drive, Emergency Passover Food Drive, Sisterhood Passover Food Sale, Sisterhood Presents Decluttering for Passover with Lauren Haas on **Zoom**, Men's Club Yellow Candle Project, Board of Trustees Meeting on **Zoom**, Executive Committee Meeting on **Zoom**



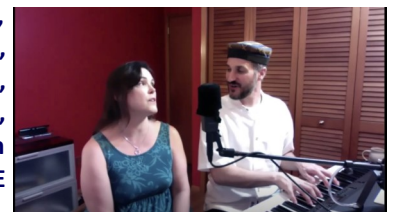
MAY



Shabbat morning Torah Learning and Discussion with Rabbi Joshua Hammerman/Rabbi Gerry Ginsburg on **Zoom**, Kabbalat Shabbat Services on **Zoom**, Family Kabbalat Shabbat with Kindergarten, 1st and 2nd Grades on **Zoom**, Eli Schwartz, Bar Mitzvah **Zoom** with Rabbi Vicki Axe, Family Havdalah Service on **Zoom**, ShaBaBimBam on **Zoom**, Kids-in-the-Round on **Zoom**, Tikkun Leil Shavuot on **Zoom**, Shavuot Services led by Rabbi Joshua Hammerman on **Zoom**, Heal and Hangout with Rabbi Joshua Hammerman on **Zoom**, Daily Mincha Service led by Rabbi Joshua Hammerman on **Zoom**, Annual TBE Membership Meeting including 7th Grade Aliyah Ceremony and "Celebrating 100 Years" video on **Zoom**, Beyond Dispute with Rabbi Joshua Hammerman in person and on **Zoom**, Contemporary Jewish Questions with Rabbi Gerry Ginsburg on **Zoom**, Zaydies Kosher Bake Shop no-contact pick-up of baked goods for Shabbat and for Shavuot, Yoga for Children on **Zoom**, Geography Trivia Night sponsored by Sisterhood on **Zoom**, Board of Trustees Meeting on **Zoom**, Executive Committee Meeting on **Zoom**

JUNE

Kabbalat Shabbat Services including guest speakers Rev. Michael Christie, Guy A. Fortt, President Stamford NAACP, and honoring our graduating high school seniors on **Zoom**, Shabbat Services on **Zoom**, D'veri Torah by Rabbi Gerry Ginsburg and Beverly Stein on **Zoom**, Daily Mincha Service led by Rabbi Joshua Hammerman on **Zoom**, ShaBaBimBam on **Zoom**, LGBTQ Pride Shabbat with Marion Howard Sherman, guest speaker on **Zoom**, Cooking with Fran Ginsburg sponsored by Sisterhood on **Zoom**, TBE Goes to Vegas on **Zoom**, ICRF and TBE present Cancer, Viruses and the Hope of Nanovaccines on **Zoom**, Historian Mark Albertson, guest speaker sponsored by Sisterhood on **Zoom**, Men's Club Blood Drive, Men's Club Scholarship Awards, Sisterhood By-Laws Vote on **Zoom**, Challah Baking with Lieba Lander sponsored by Sisterhood on **Zoom**, Sisterhood Book Discussion "Not Our Kind" on **Zoom**, Sharing Sacred Places on **Zoom**, High Holidays Tasks Force Meeting on **Zoom**, Beth El Cemetery Association Annual Meeting on **Zoom**, Board of Trustees Meeting on **Zoom**, Executive Committee Meeting on **Zoom**



ON ONE FOOT Continued from page 3...

Along with the sheer density of the crowd, those risks permeate all aspects of the service, from the handling of the Torah to the blowing of the shofar, from choral singing to simply opening a prayer book. As we consider our options, the prime Jewish value that guides our thinking is – and must be – to protect the health and safety of our congregants.

So let's focus on what the services will look like:

First, you'll be happy to note that Rosh Hashanah will still take place on Rosh Hashanah, and Yom Kippur on Yom Kippur. Though the time frame of the services will not differ significantly, we'll be packaging the event differently, into more palatable segments. Since participating in an online service is a greater challenge to our attention span, we'll be cutting some things to curtail length. There will be no need for a half-hour long Torah procession, for instance, and silent prayer can take place privately during pre-arranged "intermissions" between service segments. For that purpose, each congregant will have the opportunity to borrow a Machzor to use at home.

We will have choral singing and inspiring music, and you'll just have to wait to see how we do it. All I can say is that it will be different – and fantastic – and completely safe! The service will be professionally produced, under the able leadership of Beth Styles, to optimize the experience for everyone. That will necessitate packaging much of it in advance, which will also minimize the potential for glitches. This raises halachic concerns about authenticity. For instance, my father was one of the great cantors of his era, but it would not be appropriate to simply play a recording of his Kol Nidre, circa 1970, for our service. There is a related concern regarding Torah readings and aliyah blessings, which not only will be read in advance, but most readers will not be able to read out of a real Torah.

We are dealing with these issues in two ways: 1) Everything will be expressly prepared for this year's service. And 2), following a practice that I have been implementing on Shabbat mornings, when others are reading Torah remotely, I will be on the bima with the Torah open, following along under my breath. In other words, I will be chanting the Torah portions and key prayers in real time (assisted by Cantorial Soloist Katie and Beth), even as most of what you see online will have been assembled together in advance.

I know, it's complicated, but we feel this is the best way to ensure a meaningful and successful, as well as liturgically valid service, and one that "feels" right.

Incidentally, there are no halachic issues surrounding the sermons, so I could theoretically pull one out of the archives from twenty years ago. But I won't ☺. Yes, they will also be different – and likely shorter, if you were wondering, because I can't stop you from changing the channel!

I am particularly excited about the ways an online service can be different. For instance, with our Torah readers chanting remotely (and out of a Humash), we can expand the roster of readers to include people who have moved away, including college students and other young adults who have read here on the holidays over the years. So please get the word out to our alumni! First come – first served!

While we won't be able to blend voices in song as much as we like, there will be more congregant participation than ever. Some will open our virtual ark or have aliyahs and others will lead English readings. And meanwhile, we invite all of you – yes, each TBE member – to send a brief video New Year's greeting. We will be interspersing them within the services. Where will yours be placed? You'll just have to watch the whole thing to find out! (Actually, the services will be recorded, so don't worry – you can see your cameo later on).

We'll also be looking for creative ways to integrate the shofar soundings into our service. Since it is highly unlikely that most will get to hear a shofar in person this year (think of all those droplets!), we will find creative ways for you to hear it remotely. I also encourage you to purchase your own shofar, and we will also be distributing new toy shofars for all the kids to sound at home (Your neighbors and dogs will love us.).

And for a dose of reality, weather permitting, on the second day of Rosh Hashanah in the afternoon, we are thinking of staging a drive-by "live" shofar sounding / tashlich in our parking lot. Details to follow.

Of course, there will also be spectacular programming for children and young families. Stay tuned for more on that too.

So while we will be sad to not be physically together on the upcoming holidays, we are moving mountains to move you – to accomplish what we always try to accomplish on the Days of Awe – to strengthen our ties to tradition and community, to our people and our deepest values, to inspire, to challenge and to comfort – and we can do all that on Zoom.

Here's the punch line. We can do all that, but only if we are all together. To be a *holy* community, we need to be a *whole* community. So many have suffered, financially, emotionally and physically – we want you all to be with us. The Temple has also endured hardship – we need your continued support now more than ever. We're all concerned about what the future will hold. So let's come together – even if not in the same room – to find that common ground from which our souls can ascend.

My best wishes to everyone for a summer of good health and rejuvenation.



Rabbi Joshua Hammerman

High Holy Days 5781/2020

Everything you need to know
for the High Holy Days
on our website:

<https://www.tbe.org/high-holy-days/>

BETH EL CARES

Beth El Cares focuses on chesed and tzedakah by helping the poor and unfortunate through mitzvot, both in our synagogue and the greater Stamford community. We welcome volunteers! This is the work we are currently engaged in. If you are interested in volunteering in any of these endeavors, please contact the person listed.

Reyut (Friendship): Committed to serving the needs of those in our TBE community, including friendly visits, assistance with errands and transportation, Shabbat bag delivery to hospitalized patients. Contact Melanie Massell at reyut@tbe.org or 203-324-7190.

Project Ezra: Providing pre-shiva meals to the bereaved in the congregation. Contact Joy Katz at joyakatz@yahoo.com or 203-329-3359.

Serving the homeless: Helping prepare and serve food — you can do either or both — to the homeless at New Covenant Center in Stamford on the fifth Thursday of each month. Times are 2:30-4:15 pm and 4:15-5:30 pm. Contact Amy Temple at aetemple@optonline.net or 203-496-1309.

High Holiday Food Drive: Contact Sharon Turshen at 203-323-3872

Christmas dinners at local homeless shelters: Contact Amy Temple at aetemple@optonline.net or 203-496-1309.

SEEKING SHABBAT GREETERS WHEN WE RETURN

Do you like getting a warm “Shabbat Shalom” as you enter shul on Saturday morning?

Our greeting program has been extremely well received. To keep this program going, we need volunteer greeters like you.

For more information Contact Barry Strom at barrymstrom@gmail.com

Thanks for helping make Temple Beth El a warm and welcoming place to be.

CELEBRATING A SPECIAL EVENT? COMMEMORATING A YAHRTZEIT?

Please consider sponsoring a VIRTUAL Kiddush, following Shabbat Services, or an Oneg Shabbat, following our Friday evening services.

Contact Steven Lander for all of the new, reasonably priced Kiddush options at 322-6901, ext. 304 or execdir@tbe.org.

PAY YOUR DUES ONLINE

Go to www.tbe.org/donate and click on member payments.

Questions? Contact Linda at 203-322-6901, ext. 302 or lindar@tbe.org.

BETH EL CEMETERY ASSOCIATION

As we are reflecting on the first one hundred years of Temple Beth El, I thought I would share some of the history of the Beth El Cemetery.

In the early 1920's before Temple Beth El had its own building, the need for a Jewish cemetery, which would be affiliated with the new Temple, was realized. A committee was formed, and land was found, far away from downtown, in a wooded area of Roxbury Road. By 1926 committee members were concerned that if the fledgling Temple did not survive something needed to be done to ensure that the cemetery would stay viable. The Beth El Cemetery Association, an organization separate but connected to the Temple, was incorporated.

Members of the Association must be members of Temple Beth El and own at least two graves. The current board officers are: Allan Lang, President; Richard Fisher, Vice President; Seymour Weinstein, Treasurer and Eileen H. Rosner Executive Director/Secretary. Additional board members are: Joel Brest, Susan Greenwald, Sylvan Pomerantz, Janet Schneider and Marc Teichman.

For further information, please contact me at 203-461-0506.

Eileen H. Rosner
Executive Director Beth El Cemetery Association



Special Occasion?

Sponsor The Shabbat E-announcements
(sent every week via e-mail)

The Shabbat Announcements
(distributed each Shabbat at the Temple)
and the Shabbat-O-Gram
(e-mailed every Thursday night)

All three publications for \$72

All sponsors will be acknowledged at the beginning of each of these announcements and also listed in our bi-monthly Bulletin.

Call Mindy in the office at 322-6901 ext. 301.

Be A Matchmaker!

Dear Congregant,

In 1920 a few community members recognized the need for a modern congregation in Stamford and founded what would become known as Temple Beth El. As we celebrate our 100th Anniversary we will recognize our leadership in this, and future *Bulletins*, with the first phase of an extended exhibit.

The first part of the exhibit, “Be A Matchmaker,” invites you to acquaint yourself with the previous and present leaders of our TBE community by matching the photos of our leaders with their names and years of service. While you are having fun “being a matchmaker,” you might also consider having conversations about the essence of leadership.

Some discussion points might include:

- ⇒ What are some qualities of good leadership? What factors are considered, or *should* be considered, in determining a leader?
- ⇒ What are some examples of how a leader has affected you – positively or otherwise? What are some examples of lessons learned from your interaction with leaders?
- ⇒ What discussions and examples about leadership from the Torah, Talmud, and other literature come to mind?

Look for next opportunities to “Be a Matchmaker” in upcoming *Bulletins*. Answers for today’s “Be a Matchmaker” are provided on page 18. We hope you enjoy reminiscing or familiarizing yourself with Temple Beth El’s leaders while contemplating the broader question of the intersection of good leadership and sustainability of an institution such as Temple Beth El.

Happy matching!

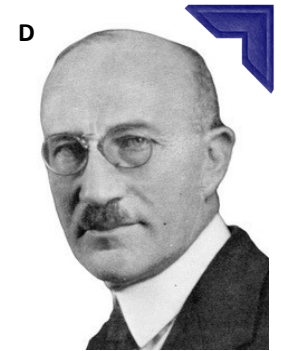
From

The History Exhibit Team



CAN YOU MATCH THE PICTURES TO THE NAMES OF OUR RELIGIOUS & MUSICAL LEADERS?

The answers are on page 17.



**1) Rabbi Joshua Hammerman Assistant Rabbi 1987–1992
Rabbi 1992 - present**



2) Cantor Deborah Jacobson 2002-2005

3) Rabbi Alex Goldman 1967-1992

4) Cantor Rachael Littman 2005-2010

5) Katie Kaplan, Cantorial Soloist 2020-

6) Hazzan Sidney G. Rabinowitz 1967-2002



7) Cantor George Mordecai 2010-2015

8) Rabbi David W. Pearlman 1938-1965

9) Rabbi Louis J. Haas 1931-1937

10) Cantor Magda Fishman 2015-2019

11) Cantor Samuel Tobey c 1927

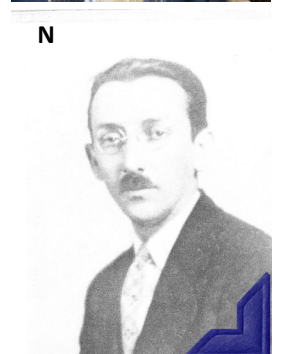
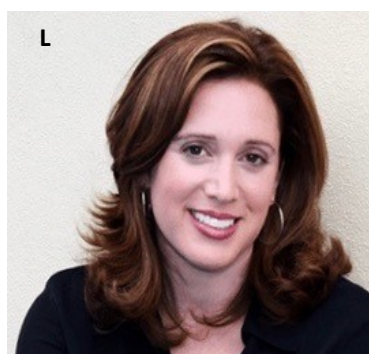
12) Beth Styles Music Director 2012 - present



13) Rabbi Max Arzt 1921-1924 ...1931

14) Rabbi Gerry Ginsburg

*We gratefully acknowledge the support
of the Archives of the Jewish Historical Society of Fairfield County.*



DONATE ONLINE
Go to: www.tbe.org/donate/

OPPORTUNITIES FOR GIVING

- ☒ Adult Education Fund
- ☒ Beth El Cares
- ☒ Beth Elders
- ☒ Debra Wald Goldberg Kindergarten Scholarship Fund
- ☒ Frank & Rose Rosner Memorial Fund (maintenance)
- ☒ General Fund
- ☒ Kiddush Fund
- ☒ Matthew Klein Memorial Sanctuary Garden Fund
- ☒ Emmet Manheim Playground Fund
- ☒ Mitzvah Garden Fund
- ☒ Music Fund
- ☒ Prayer Book Fund
- ☒ Project Ezra Fund
- ☒ Religious School Fund
- ☒ Reyut Shabbat Bag Fund
- ☒ Security Fund
- ☒ Solar Fund in memory of Norma Mann, z'l
- ☒ Youth Fund

DISCRETIONARY FUNDS

- ☒ Rabbi Joshua Hammerman's Mitzvah Fund
- ☒ Cantorial Soloist Katie Kaplan's Mitzvah Fund
- ☒ Hazzan Sidney Rabinowitz' Mitzvah Fund

ATTENTION PARENTS OF COLLEGE STUDENTS

Rabbi Hammerman would like to stay in touch with your child while he/she is away at college. Please send his/her e-mail address to Beth in the Temple office at adminassist@tbe.org. *Thank you!*



Get involved, please...

Help Wanted! In order to maintain our vibrant and dynamic community, the Fund-Raising Committee needs more members to support TBE and volunteer their skills and talents. Many of these opportunities ask for very small-time commitments. Please consider getting involved with the:

Annual Appeal | Temple Rock | Cantor's Concert

If you are interested in volunteering, please contact us and we will give you more information.

Thank you!

Dana Horowitz (danalhorowitz@gmail.com)

Steve Sosnick (mssosnick@att.net)

Fund-Raising Co-Chairs



TREE OF LIFE



A beautiful way to commemorate a special occasion is to purchase a "leaf" on our beautiful "Tree of Life" sculpture adorning our Temple lobby. There are many more leaves available for your own personal inscriptions.

The following categories are still available:

Triple Chai	\$5,400
Silver Leaves - Gold Border	\$750
Silver Leaves	\$250

CONTRIBUTING SHARES OF STOCK TO TEMPLE BETH EL

One way to boost your charitable contributions to Temple Beth El is to give shares of appreciated stock instead of cash. You do not pay any tax on your capital gain, and your charitable deduction is the shares' entire fair market value.

Several Beth El members contribute shares of stock to satisfy their dues pledge, their annual fund pledge, and other contributions to the Temple.

After consulting your tax advisor, please contact the TBE office at 203-322-6901.

WE ARE GRATEFUL FOR YOUR CONTRIBUTIONS

IN HONOR OF:

STEVEN LANDER FOR ALWAYS FINDING NEW WAYS TO MEET THE NEEDS OF TBE MEMBERS

Suzanne & Rob Fruithandler

RISA RAICH FOR RECEIVING THE HYACINTHE & HAROLD E. HOFFMAN HUMANITARIAN AWARD FROM THE JCC

Lisa & Morris Barocas

IN APPRECIATION OF RABBI HAMMERMAN'S LECTURE SERIES

Marilyn & Mitch Sofer

RABBI JOSHUA HAMMERMAN, RABBI GERRY GINSBURG AND SUSAN SCHNEIDERMAN FOR PROVIDING A DAILY SERVICE SO THAT JUDY COULD RECITE KADDISH FOR HER SISTER

Judy Dalgin & Norman Suchin

SUSAN SHAPIRO FOR THE HEBREW READING CLASS

Mark Creedon

THE BIRTH OF HAYDEN RAYMOND ROGOL

Marsha Colten & Robert Cohen

RABBI JOSHUA HAMMERMAN FOR THE PUBLICATION OF "EMBRACING AUSCHWITZ"

Sheila Romanowitz

THE MARRIAGE OF FAYE SILBER TO ZACH COVAN

Marsha Colten & Robert Cohen, Sue Frieden

RELIGIOUS SCHOOL FUND

In memory of...

Jeanette Fishkow, z'l by Amy Fishkow Benjamin & Jim Benjamin

SHABBAT BAG FUND

In honor of...

Rabbi Gerry Ginsburg for leading the yahrtzeit service for Donald Halprin, z'l, by Leslie and Joseph Heyison

In memory of...

Harvey Novick, z'l, by Meryl & Hank Silverstein

KIDDUSH FUND

In memory of...

Donald Halprin, z'l, by Leslie & Joseph Heyison

MEN'S CLUB SCHOLARSHIP FUND

In honor of...

Rabbi Joshua Hammerman for his support and assistance for my family by Judy Fishman

In memory of...

Gerald Fishman, z'l, by Ellen Gottfried, Sari & Alan Jaffe, Suzanne & Norman Stone, Susan Bloch, Lisa Bloch Rodwin, Andrea Bloch, Fran & Gerry Ginsburg, Roz & Alec Perlson, Ellyn Sternfield & Alan Blank, Cheryl Kendall, Peggy & Alan Kalter, Judith Lickson, Warren & Barbara Brandt, Barbara Harrison, Marcia & Sol Karsch, David Hazan, Lillian & Jerold Grammer, Rosalie Makler, Marilyn & Lawrence Katz

YOUTH FUND

In memory of...

Samuel Kweskin, z'l, by Ilene & Jim Locker & Family

RABBI JOSHUA HAMMERMAN MITZVAH FUND

In honor of...

In appreciation by the Oberhand Family

The marriage of David Pianin to Nora Kurtz by Roni Allan Lang

In memory of...

Ruth Colner, z'l, by Debby & Jack Goldberg

EMMET MANHEIM PLAYGROUND FUND

In honor of...

Ilana and Madelyn Meth's birthday by Adrienne Schamberg, Vanya Kapur, Akiko and Ed Nakamura, Nida Bozkurt, Murphy Family, Carolena Lefebvre, Avnir Family, Grace Miranda, Lucia Loffredo

Fredda & Ed Goldstein on their 50th wedding anniversary by Ruth & Mike Herlands

MITZVAH GARDEN FUND

In memory of...

Harold Fishkow, z'l by Amy Fishkow Benjamin & Jim Benjamin

PROJECT EZRA FUND

In honor of...

The Project Ezra Committee and Eileen H. Rosner for the very welcome shiva meal by Judy Fishman

ELEVATOR FUND

In honor of...

Sari and Alan Jaffe on the occasion of their 50th Wedding Anniversary by Susan Frieden, Judy Dalgin & Norman Suchin, June & Jon Gold, Carol & Allen Krim, Judy & Bill Kaufman, Sheila Romanowitz, Suzanne & Norman Stone

Zöe Jaffe-Berkowitz graduating from Bi-Cultural Hebrew Academy by Carol & Allen Krim

The high school graduation of Suzanne & Norman Stone's granddaughters, Emma and Isabel.

THANK YOU FOR DEDICATING...

MAHZOR LEV SHALEM

In memory of...

Rosalind & Simon Alexander, z'l, by Barbara & Warren Brandt

Donna Ramme, z'l, by Linda & Larry Rezak

INFORMATION FOR YOU...

When making a donation an acknowledgement will be mailed to the designee for donations of \$10 or more. Donations of less than \$10 will be acknowledged only in the Bulletin. All donations will be published in the Bulletin unless you state that you wish to be anonymous.



REMEMBERING OUR LOVED ONES



Sandy & David Moreinis **FORTUNA ABADI**
 Binnie Ditesheim **SOL ATKINS**
 Barbara Shanen **ANN & MAX BENNETT**
 Nancy Greene **ADELE & AUGUST BERMAN**
 Sari & Alan Jaffe **EDWARD BLONDER**
 Gail & Raymond Walter **MALKA BRAUM**
 Rita & Michael Buttermann **EDITH & HY BUTTERMAN**
 Naomi Hessel & Family **STANLEY CHAIKIND**
 Rae Cohen **CHARLES COHEN**
 Fran & Bob Plansky **MILDRED COOPER**
 Barbara Shapiro & Bruce Dennis **JONAS DENNIS**
 Joan & Robert Rosenthal **HYMAN DOCTOR**
 Barbara & Edward Drotman **LEO DROTMAN**
 Joseph Field **BARBARA FIELD**
 Andrea & Jack Scherban **PHILIP FIGHTLIN**
 Sally & Jim Rothkopf **EMANUEL FRIEDMAN**
 Barbara & Stan Friedman **JACK FRIEDMAN**
 Robert Friedman **SAMUEL FRIEDMAN**
 Fran & Gerry Ginsburg **BARBARA GINSBURG**
 Phyllis Gofstein **DAVID GOFSTEIN**
 Myra & John Graubard **FLORENCE GRAUBARD**
 Shari & Sandy Weisz **PEARL GREDINGER**
 Ginette Kellner **FRADLA HOLLAND**
 Susan & Larry Holzman **JOHN HOLZMAN**
 Roz & Alec Perlson **ALICE HORLICK**
 Leslie Horowitz **HERBERT HOROWITZ**
 Leslie Horowitz **CAROLYN HOROWITZ**
 Susan & Richard Blomberg **SELMA & ARNOLD KALISKI**
 Donner & Kleiner Families **ISADORE KLEINER**
 Suzanne & Robert Kahn **TILLIE KOHN**
 Alan Locker **CELIA LOCKER**
 Magida Family **ALAN MAGIDA**
 Sandra & David Oberhand **MARGARET MARX**
 Melanie Massell **MICHAEL MASSELL**
 Ellen & Joel Mellis **SAMUEL MELLIS**
 Amy & Mel Bloomenthal **LEON MITCHELL**
 Sandy & David Moreinis **SAMUEL MOREINIS**
 Eleanor Mirne **ESTHER NUSSDORF**
 Lisa & Mitch Pomerance **WILLIAM POMERANCE**
 Shelley & Brian Zielinski **ROBERT RATZKER**
 Rhonna & Brian Rogol **ALICE ROGOL**
 Judy Schneiderman **EMANUEL ROSENBERG**
 Joyce & Lewis Slayton **ROSE ROSNER**
 Sally & Jim Rothkopf **DORIS ROTHKOPF**
 Barbara Shanen **ALLEN SHANEN**
 Sheila & Gordon Brown **FANNIE SHEVRIN**
 Joyce & Lewis Slayton **SARAH SLAYTON**
 Susan & Larry Holzman **RAY SNIPPER**
 Marilyn & Mitch Sofer **AARON SOFER**
 Kathy Cooperman & Elliott Tuckel **MAX TUCKEL**

SHIVA NOTICES AVAILABLE ON-LINE

Congregants who are looking for shiva information can now quickly look online instead of searching their inbox for the announcement or calling the synagogue office. Just go to TBE's website (www.tbe.org) and click "Shiva Notices" under the WHAT'S NEW menu.

IN MEMORY OF:

LESTER HALPERN, z'l

Betsy & Peter Kempner, Lois Stark & Gary Lessen, Devra Jaffe-Berkowitz & Parry Berkowitz, Karen Blueweiss

LEONARD SPRINGER, z'l

Lois Stark & Gary Lessen, Carol Schwartz, Rosalea & Dick Fisher, Carol & Wil Brewer

RICHARD LEHRFELD, z'l

Lois Stark & Gary Lessen

MARCIA FRANKEL, z'l

Lois Stark & Gary Lessen

ETHEL SIEMAN, z'l

Maxine & Jay Freilich, Robin Evans & Jeffrey Perry, Caryl Ferber Poser & Peter Poser, Marilyn & Mitch Sofer, Judy & Michael Katz, Beverly, Pam & Curt Bogen

DONNA RAMME, z'l

Carol & Wil Brewer, Devra Jaffe-Berkowitz & Parry Berkowitz, David Bromwich

LISSETTA MARCO, z'l

Ellen Gottfried

SANDRA BURN, z'l

Judy Dalgin & Norman Suchin

PHYLLIS LAPIN, z'l

Betsy & Peter Kempner, Peggy & Alan Kalter, Sari & Alan Jaffe, Myrna & Herman Alswanger, Sue Frieden

SHELDON LANG, z'l

Sharon & Steven Katz

IRWIN GERBER, z'l

Betsy and Peter Kempner, Barbara Aronica, Carol & Allen Krim

ADULT EDUCATION FUND

In memory of...

Robert Romanow, z'l, by Barbara & Warren Brandt

MEMORIAL PLAQUES



Inscribe the names of your loved ones on a plaque for our Chapel wall along with a light to commemorate their *yahrtzeit* and *yizkor* observances throughout the year.

For details, contact Mindy at office@tbe.org or 203-322-6901, ext. 301.

WE MOURN THE PASSING OF...

ETHEL SIEMAN, mother of Susan Plutzer
 LILY PERRY, mother of Jeffrey Perry
 GERALD FISHMAN, husband of Judy Fishman
 SHELDON LANG, father of Jay Lang
 PHYLISS LAPIN, wife of Seymour Lapin
 and sister of Mark Lapine
 ROBERT ROMANOW, brother of John Romanow
 IRWIN GERBER, father of Pamela Tinkham

ANSWERS TO QUIZ ON PAGE 13:

A - 3	H - 4
B - 5	I - 14
C - 8	J - 10
D - 13	K - 12
E - 7	L - 2
F - 9	M - 1
G - 6	N - 11

DID YOU KNOW?

TBE offers free family membership for the first year to any member's child on the occasion of his or her marriage. For more information, contact Steve Lander at 203-322-6901, ext. 304.



**THE FUTURE OF THE
JEWISH COMMUNITY
IS IN YOUR HANDS.**



**HOW WILL YOU ASSURE
JEWISH TOMORROWS?**

TEMPLE BETH EL
350 Roxbury Road
Stamford, CT 06902
www.tbe.org



To create your Jewish legacy
contact: Steven Lander
execdir@tbe.org
203-322-6901, ext. 304

THE TBE 100 MITZVAH PROJECT

The TBE 100 Mitzvah Project provides opportunities for congregants to honor TBE's centennial through the performance of *gemilut hasadim* (acts of loving kindness) that help charitable organizations in need of volunteers and non-monetary contributions.

**Mitzvah Opportunities at the Schoke
Jewish Family Service of Fairfield County**

- **Work at the kosher food pantry** at SJFS. Distribute food during walk-in hours: Monday - Wednesday, 10:30 am-12:30 pm. Organize and maintain the pantry: Monday - Friday, 9 am - 4 pm.
- **Deliver meals and food items** to homebound clients. Time is flexible.
- **Participate in Mitzvah Monday** with your kids on the third Monday of each month (Mar 16, Apr 20, May 18 ...) from 3 pm-5 pm. Bring kosher food items to the pantry and help stock shelves. GREAT for teens!
- **Visit a homebound client** for a "friendly visit" to alleviate loneliness. Time is flexible.
- **Donate food and non-food items.** Items can be dropped off at the TBE office or at SJFS.

If you are interested in doing one or more of these mitzvahs, please contact Jill Knopoff at (203) 921-4161. Don't forget to mention you're from TBE.

After completing a mitzvah, please send a note to mitzvah100@tbe.org with the name or names of the family members who participated, the mitzvah, and a photo if possible.

*We Capture Your
Precious Memories
on Video...*

Weddings ♦ Bar/Bat Mitzvahs

Proud to be the official TBE videographer

Tom was able to capture the spirit and joy of our B'nai Mitzvah service and party in a video we will always treasure. He was also a pleasure to work with from start to finish.

Jared Finkelstein

If you are looking for a videographer, look no further! Tom was a delight to work with and the finished product was incredible. He created separate videos of my daughter's Bat Mitzvah service and celebration and captured all aspects of the joy of the day.

Jill Teich

Thomas Pace, Jr. ♦ 203.335.0168
T & J Video Service

We also transfer home movies/video to DVD.

ART GREENWALD

President

INTEGRATED PROTECTION SERVICES, LLC
320 Boston Post Road, Suite 140 DARIEN, CT 06820
Tel: 203.322.0772

WWW.INTEGRATEDPROTECTIONSERVICES.COM

SYSTEMS AND SERVICES FOR SECURITY
AND FIRE PROTECTION
SERVING CONNECTICUT AND NEW YORK
COMMERCIAL AND RESIDENTIAL



HAVE YOU VISITED OUR WEBSITE?

www.tbe.org

Find out about the latest news and upcoming activities ... access our online membership directory ... register for events and make donations ... connect to TBE's Twitter and Facebook pages ... and much more.

HIGH HOLIDAYS 5781

Rosh Hashanah - September 19-20, 2020

Kol Nidrei - September 27

Yom Kippur - September 28, 2020

Sukkot - October 3-4, 2020

Shemini Atzeret - October 10, 2020

Simchat Torah - October 11, 2020

abel

CATERERS, INC.

The Kosher Catering Experts

www.abelcaterers.com

We cater to you!

Abel's innovative
chefs create
unique menus
to fit your tastes
and budget.

203.389.2300

Connect with us



Tom Gallagher
Owner

לדור ודור L'Dor V'Dor

from generation to generation

**Locally owned and operated.
Call us for personal and affordable service!**

203.359.9999

Our Family has been serving Your Family for generations!



Thomas M. Gallagher Funeral Home

Your Hometown Jewish Funeral Home

453 Shippan Ave. | Stamford, Connecticut 06902 | tom@gallagherfuneralhome.com
Not affiliated with Leo P. Gallagher Funeral Home

FETHI PHOTOGRAPHY

cell: 914-629-2204

fethic@me.com

www.fethiphotography.com

Experience working with TBE for over 25 years.

Ask your friends!

THE DEADLINE FOR THE
SEPTEMBER-OCTOBER 2020 ISSUE
OF THE TEMPLE BETH EL BULLETIN IS:
AUGUST 3, 2020

Artists' Market

EXTRAORDINARY ART & FRAMING

American Crafts: Glass, Wood, Ceramics & Jewelry
Sophisticated Judaica: Mezuzahs, Menorahs, & More

Expert Frame Design and Manufacturing on Premises
"from the simple to the extraordinary"

Fine Contemporary Photography & Original Graphics
Specialist in M. C. Escher Original Masterworks

www.ArtistsMarket.com

163 Main Street, Norwalk

203.846.2550

✓+ Math Tutoring SAT & ACT Preparation

I. Jeff Turshen, Ph. D.

- All Levels of Math - Middle School, High School (Basic to Advanced Placement), and College
- Experienced Teacher - High School & College

References provided upon request

203-323-3872

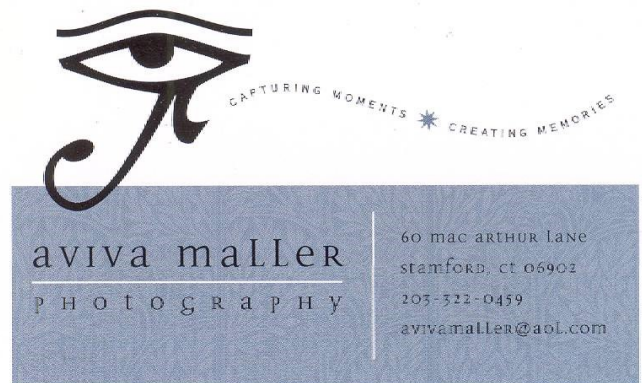
IJTurshen@aol.com



A Full Service Production Company:

- Event Decor
- Event Management
- Live Sound
- Video and Photography
- Rigging and Staging
- Webcasting
- Lighting
- Non-Profit Events
- Trade Shows and Product Launches
- AV Equipment Rental
- Drone Imagery Services

25 Viaduct Road Stamford, CT 06907 P: (203) 517-4688
www.kpeventsgroup.com



Check out our special website
Dedicated to TBE's event space

www.thebigeventspace.com

Please let your friends and business
associates know how we can fulfill their
celebratory and meeting needs.



MADDY SHAPIRO

Sales Associate
REALTOR® of the Year 2011

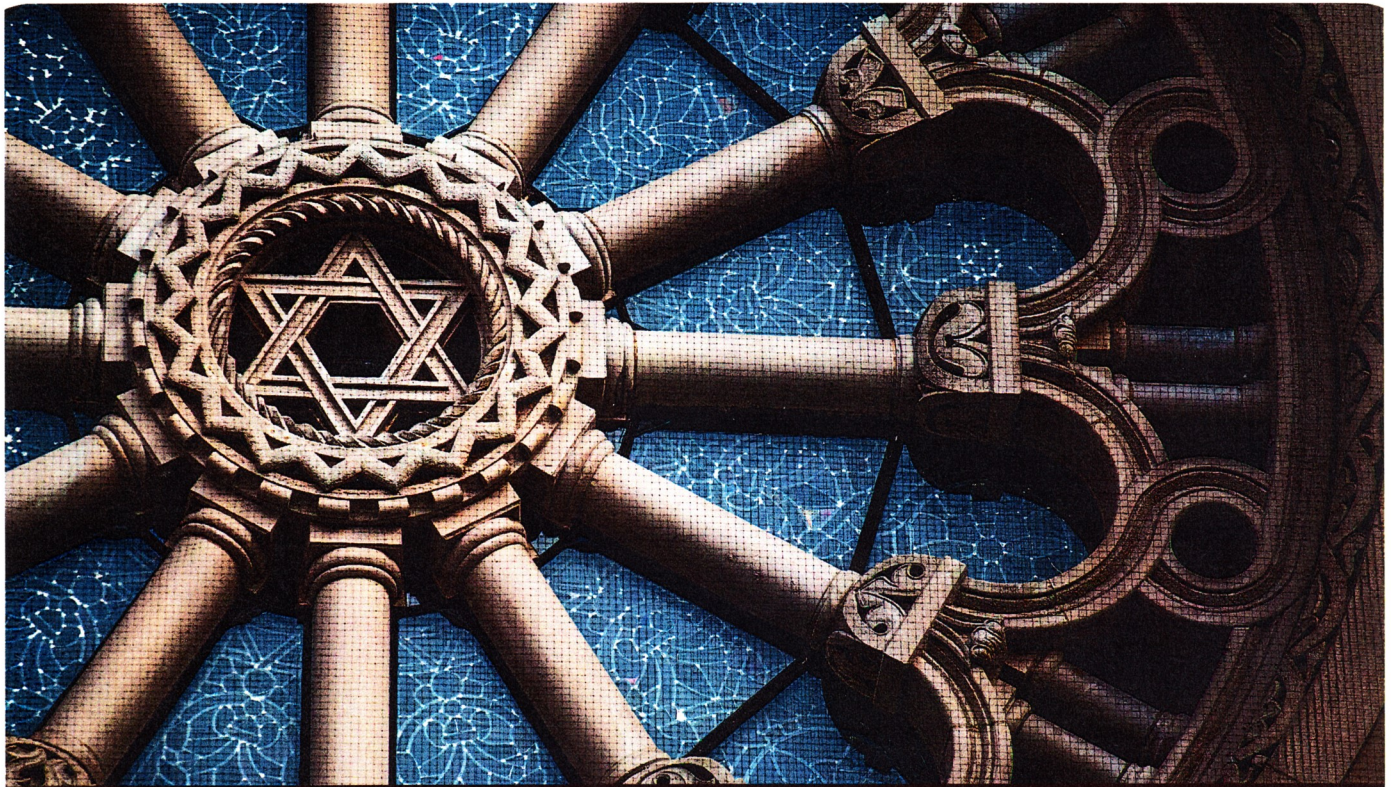
203-940-5569 CELL
203-329-9792 HOME OFFICE
Maddy.shapiro@cbmoves.com



Operated by a subsidiary of NRT LLC



www.maddyshapiro.com



TAKING CARE OF EACH OTHER
is what community is all about.

WE'RE PROUD TO SERVE our community with personal, compassionate care.
As your Dignity Memorial® professionals, we're dedicated to helping families create
a unique and meaningful tribute that truly honors the heritage of the Jewish faith.

We invite you to contact us today to learn more.

Dignity®
MEMORIAL

✧ LIFE WELL CELEBRATED™ ✧

LEO P. GALLAGHER & SON

FUNERAL HOME

STAMFORD

203-327-1313 LeoPGallagherStamford.com