

# Temple Beth El Bulletin

A Conservative, Inclusive, Spiritual Community

[www.tbe.org](http://www.tbe.org)

Volume 48 Issue 1 (bi-monthly)

January-February 2021

Tevet/Shevat/Adar 5781

## Providing Food and Gifts at Local Shelters during COVID-19

December 24, 2020



(see more on page 11...)

## A Rewarding Community Effort

On December 27 TBE and United Baptist Church worked together to distribute 1,000 boxes of food.



**100**  
TEMPLE BETH EL  
CELEBRATING OUR FIRST 100 YEARS

## TEMPLE BETH EL - BOARD OF TRUSTEES

### EXECUTIVE COMMITTEE

Lisa Manheim, President	917-690-2712
Carl R. Weinberg, Immediate Past President	203-322-8675
Scott Krowitz, First Vice President	917-902-1447
Stan Friedman, Vice President	203-322-0416
Dana Horowitz, Vice President	203-321-0018
Devra Jaffe-Berkowitz, Vice President	203-978-1113
Arthur Laichtman, Vice President	203-461-8223
Christopher Maroc, Vice President	914-215-2025
Lael Shapiro, Vice President	203-273-8380
Daniel Young, Vice President	203-975-1990
Robert S. Cohen, Treasurer	203-329-9622
Emily Klein, Secretary	347-901-0228

### ADVISORS

Steven Sosnick	203-219-0270
Mia M. Weinstein	203-595-0528

### TRUSTEES

David Amsellem	203-832-4335
Lori Bushell	203-962-2974
Jeffrey Cohen	203-358-9911
Kahla Cooper	203-554-7888
Aron Davidson	203-274-6363
Jon Eisenstein	203-321-8369
Leslie Glenn	203-273-7215
Susan Greenwald	203-322-0771
Michael Handel	203-981-1987
Julie Rosenberg	203-975-8880
Irma Ross	203-246-4880
Barbara Rothstein	203-614-8053
Judy Schneiderman	203-569-4969
I. Jeffrey Turshen	203-323-3872

### SISTERHOOD PRESIDENT

Karen Resnick	203-536-3115
---------------	--------------

### MEN'S CLUB PRESIDENT

Josh Levine	203-276-4935
-------------	--------------

### PAST PRESIDENTS

Gordon Brown	203-276-8688
Rosalea Fisher	203-323-1449
Fred S. Golove	203-322-0295
Herbert Kahan	203-595-9981
Alan Kalter	203-322-8220
Peter K. Kempner	203-968-8079
Mark Lapine	203-329-9879
Gary P. Lessen	203-322-7617
Sylvan D. Pomerantz	203-968-0605
Brian Rogol	212-531-8203
Eileen H. Rosner	203-461-0506
Mia M. Weinstein	203-595-0528

### WHERE TO FIND IT

Joshua Hammerman, Rabbi.....	Page 4
Katie Kaplan, Cantorial Soloist.....	Page 4
January-February Service Schedule.....	Page 5
Young Families .....	Page 6
Adult Education .....	Page 6
Beth El Cares .....	Page 11
Men's Club .....	Page 12
Sisterhood .....	Page 12-13
TBE 100 <sup>th</sup> Anniversary .....	Page 14-15

## COMMITTEE CHAIRPERSONS

### Board of Education

Kahla Cooper .....	203-554-7888
--------------------	--------------

### Empty Nesters

Sue and Carl Shapiro .....	203-353-0657
----------------------------	--------------

### Facilities

Lael Shapiro.....	203-273-8380
-------------------	--------------

### Finance

Robert S. Cohen .....	203-329-9622
Susan Frieden.....	203-869-4282

### Fund Raising

Arthur Laichtman .....	203-461-8223
------------------------	--------------

### High Holy Days Task Force

Devra Jaffe-Berkowitz .....	203-978-1113
-----------------------------	--------------

### High Holy Days Food Drive

Sharon Turshen .....	203-323-3872
----------------------	--------------

### Human Resources

Carl Weinberg .....	203-322-8675
---------------------	--------------

### Marketing and Communications

Stan Friedman.....	203-322-0416
--------------------	--------------

### Membership Committee

Chris Maroc.....	914-215-2025
------------------	--------------

### Mitzvah Garden

Harriet Weinstein.....	203-353-8873
------------------------	--------------

### Project Ezra

Joy Katz .....	203-329-3359
----------------	--------------

### Reyut Committee

Melanie Massell .....	203-324-7190
-----------------------	--------------

### Ritual Committee

Devra Jaffe-Berkowitz .....	203-978-1113
-----------------------------	--------------

### Social Action Committee

Dana Horowitz .....	203-321-0018
---------------------	--------------

### Tzedek Committee

Julie Rosenberg .....	203-975-8880
-----------------------	--------------

### Immigration Task Force

Belle Horwitz.....	203-968-1296
--------------------	--------------

## OUR STAFF IS MOST EAGER TO ASSIST YOU

**Monday - Thursday, 9am - 5:00 pm | Friday, 9am - 2:00pm**

**Phone: 203-322-6901 Fax: 203-322-0532**

Joshua Hammerman, Rabbi (rabbi@tbe.org)	ext. 307
Katie Kaplan, Cantorial Soloist (cantor@tbe.org)	ext. 315
Sidney G. Rabinowitz, Hazzan Emeritus (hazzan@tbe.org)	ext. 309
Steven Lander, Executive Director (execdir@tbe.org)	ext. 304
Lisa Gittelman Udi, Director of Congregational Learning (eddir@tbe.org)	ext. 305
Rabbi Gerry Ginsburg, Associate Rabbi (rabbiginsburg@tbe.org)	ext. 300
Jami Fener, Engagement Coordinator (engagement@tbe.org)	917-680-9413
Beth Silver, Religious School & Campaign Administrative Assistant (education@tbe.org   campaign@tbe.org)	ext. 306
Linda Rezak, Bookkeeper (lindar@tbe.org)	ext. 302
Mindy Rogoff, Temple Secretary (office@tbe.org)	ext. 301
Beth Silver, Secretary (adminassist@tbe.org)	ext. 308
Alberto Eyzaguirre, Facilities Manager (maint@tbe.org)	ext. 314
Sisterhood Gift Shop (bfberman@gmail.com)	203-329-7750





A VIRTUAL TEMPLE ROCK GATHERING

**COME TOGETHER**

SATURDAY, FEBRUARY 6 2021

8 TO 10 P M

*A Festive Dinner Party in a Magical Box  
of Tapas, Desserts and Cocktails!*

*Featuring the Temple Rock Auction*

*Musical Entertainment  
and  
World Famous Illusionist Tom Pesce*

*Magical Attire*



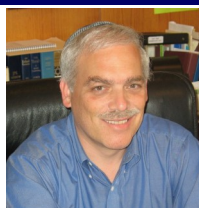
*Reserve online:  
[www.tinyurl.com/templerock21](http://www.tinyurl.com/templerock21)*

## ON ONE FOOT

### The Roaring Twenties

**What will follow this horrific year? Some hints from Isaiah.**

Like many of you, I'm chomping at the bit to say sayonara to 2020. And as 2020 ends, and the Roaring '20s begin, chapter 61 of Isaiah puts our aspirations for a fresh start into poetry:



**א** רוח אֲדֹנָי יְהוֹה, עָלַי--יַעַן מָשַׁח יְהוֹה אֹתִי לְבַשֵּׁר עֲנֻיִם,  
שְׁלַחְנִי לְחִבֵּשׁ לְנִשְׁכָּרֵי-לֵב, לְקַרְא לְשִׁבּוּיִם דְּרוּר, וְלִאֲסוּרִים  
פְּקַח-קוֹחַ.

**ב** לְקַרְא שְׁנַת-רִצּוֹן לַיהוֹה, וַיּוֹם נָקָם לְאַלְהֵינוּ, לְנַחֵם,  
כָּל-אֲבֵלִים.

**ג** לְשׁוּם לְאַבְלֵי צִיּוֹן, לְתַת לָהֶם פָּאֵר תַּחַת אֶפְרַשְׁמֵן שְׁשׁוֹן  
תַּחַת אֲבָל--מַעֲטָה תְהִלָּה, תַּחַת רֹחַ כְּהֵה; וְקַרְא לָהֶם אֵילֵי  
הַצֶּדֶק, מִטַּע יְהוֹה לְהַתְפָּאֵר.

**ד** וּבָנוּ חֲרֻבוֹת עוֹלָם, שְׁמִמּוֹת רִאשֹׁנִים יְקוּמָמוּ; וְחִדְשׁוּ עָרֵי  
חָרֵב, שְׁמִמּוֹת דּוֹר וָדוֹר.

**1** The spirit of the Lord GOD is upon me; because the LORD hath anointed me to bring good tidings unto the humble; He hath sent me to bind up the broken-hearted, to proclaim liberty to the captives, and the opening of the eyes to them that are bound;

**2** To proclaim the year of the LORD'S good pleasure, and the day of vengeance of our God; to comfort all that mourn;

**3** To appoint unto them that mourn in Zion, to give unto them a garland for ashes, the oil of joy for mourning, the mantle of praise for the spirit of heaviness; that they might be called terebinths of righteousness, the planting of the LORD, wherein He might glory.

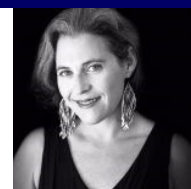
**4** And they shall build the old wastes, they shall raise up the former desolations, and they shall renew the waste cities, the desolations of many generations.

The first verse speaks specifically to the rewards of humility alongside a comeuppance for the arrogant; and it envisions a liberation for those imprisoned by systemic injustice and moral blindness. Verses two and three speak directly to those grieving for the unbearable losses of the past year, in particular, the Covid catastrophe. Life-saving masks became our garland - the Hebrew word *pe'er* translates to "fancy headdress," and in 2020 the masks kept getting fancier

*Continued on page 21...*

## KATIE KAPLAN, CANTORIAL SOLOIST

### Once Upon A Zoom Mitzvah



"You're muted," was one of the classic phrases of 2020 and one so familiar it has become the slogan on several T-shirts and mugs sold to memorialize and provide entertainment during this new, strange world we are in. Technological jokes aside, at Temple Beth El we are anything but "muted." We've leveraged the ZOOM technology to create a virtual sanctuary that is portable, versatile, and flexible, allowing us to hold services for hundreds of attendees without compromising their health and safety. Over the past several months, we celebrated as a community while eleven of our students became B'nai Mitzvah. Each of our unique and inspiring students fulfilled this rite of passage while rolling with the times, making lemonade out of lemons, and teaching us the value of embracing the blessings of the present moment.

**Eli Schwartz** was the first last spring, and he seized the moment and acknowledged the significance of these times. He was followed by **Brandon Nadel** as the first to kick-off our fall group and he educated us on the importance of taking the pandemic seriously. **Sydney Kassel** had a beautiful high-tech service from her home, showing us that we could have a creative and meaningful experience from a place other than the sanctuary. **Camryn Laichtman** held the bimah at TBE and blossomed with confidence and grace before our eyes.

**Richard Baer** and his family hosted from home with the assistance of Cantor Moshe Bear in a unique and meaningful service. **Maya Shapiro** displayed comfort and poise on the bimah at TBE, conducting her service with ease. **Austin Eisenstein's** family went off-site to a hotel, where he was able to be with family for both the services and celebratory meals. **Owen Herz** had a beautiful setting outside in his backyard, where he was able to lead family onsite as well as on 100 devices in our virtual sanctuary. **Ilana Gilbert** serenaded us during the Friday night service with ukulele, and her musical soul beamed as she chanted from her heart. **Alex Cohen** and his family illuminated the beauty of *L'dor Vador* with a home-based family service. **Aaron Friedman** truly lit up the 2nd day of Hanukkah with his passionate chanting and beaming smile.

Given the unique challenges of social distancing, these students rose to new heights and were responsible for creating and holding sacred space with their families - a task that they all fulfilled splendidly! By becoming B'nai Mitzvah in these times, they truly exemplified what it means to continue to fulfill the mitzvot of our people, no matter the challenges facing us. While we are looking forward to being back together in person, these ZOOM services were both unique and meaningful. I am so proud of the effort, determination, and resilience of our B'nai Mitzvah students and their families. The future is most certainly a bright one as we move into a new secular year of hope and optimism. I look forward to seeing where this talented and sensational group of students will choose to shine their light. May they always maintain their ability to find the silver lining in challenging times and inspire us to keep smiling when we hear the phrase, "You're muted."

*Katie Kaplan*





## SHABBAT AND FESTIVAL SERVICES



### JANUARY

#### Friday, January 1

Kabbalat Shabbat 6:00 p.m.  
D'var Torah by Rabbi Gerry Ginsburg

#### Shabbat, January 2

Shabbat Services 10:00 a.m.  
D'var Torah by Rabbi Gerry Ginsburg

#### Friday, January 8

Kabbalat Shabbat 6:00 p.m.

#### Shabbat, January 9

Shabbat-in-the-Round Service 10:00 a.m.  
ShaBaBimBam 11:00 a.m.

#### Friday, January 15

Kabbalat Shabbat 6:00 p.m.  
D'var Torah by Rabbi Gerry Ginsburg

#### Shabbat, January 16

Shabbat Services 10:00 a.m.  
D'var Torah by Rabbi Gerry Ginsburg

#### Friday, January 22

Kabbalat Shabbat 6:00 p.m.

#### Shabbat, January 23

Shabbat Services 10:00 a.m.

#### Friday, January 29

Kabbalat Shabbat 6:00 p.m.

#### Shabbat, January 30

Shabbat Services 10:00 a.m.

### FEBRUARY

#### Friday, February 5

Kabbalat Shabbat 6:00 p.m.

#### Shabbat, February 6

Shabbat-in-the-Round Service 10:00 a.m.

#### Friday, February 12

Kabbalat Shabbat 6:00 p.m.

#### Shabbat, February 13

Shabbat Services 10:00 a.m.

#### Friday, February 19

Kabbalat Shabbat 6:00 p.m.

#### Shabbat, February 20

Shabbat Services 10:00 a.m.  
ShaBaBimBam 11:00 a.m.

#### Thursday, February 25 - Erev Purim

Purim Clown College 5:15 p.m.  
Family Service, Megillah Reading & Mask Parade 6:00 p.m.  
Adult Megillah Reading 8:00 p.m.

#### Friday, February 26

Kabbalat Shabbat 6:00 p.m.

#### Shabbat, February 27

Shabbat-in-the-Round Service 10:00 a.m.

All services will be held on Zoom.

### NEW CARPETING IN THE ROSNER ROOM!

Thank you to Alberto and Rad for installing new carpeting in the Rosner Room. And thank you to the Frank and Rose Rosner Memorial Fund for its generous contribution.

### THE BEGINNING OF OUR ELEVATOR PROJECT

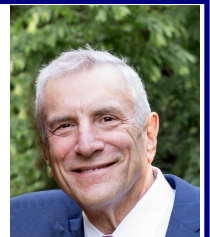
The elevator is being installed and will be followed by the new lobby doors will be installed. Thank you to all who contributed to the Campaign for TBE.



### CHILDREN'S MENTAL HEALTH AND THE EFFECTS OF THE PANDEMIC

A special program for parents and  
grandparents with children of school age

Thursday, February 4, 7:30 pm  
with Dr. Alvin Rosenfeld



*Sponsored by the TBE Men's Club*

Leading the discussion will be Dr. Alvin Rosenfeld, Clinical Professor of Psychiatry at Weill Cornell Medical College. Alvin, as you know, is also a congregant.

Register here: <http://tinyurl.com/tbe0204>

You will receive Zoom information with your confirmation.

To help shape the discussion, we are asking attendees to register and submit questions/comments about this topic beforehand.

## JAMI FENER - ENGAGEMENT COORDINATOR



### SHABABIMBAM

A Shabbat program for families with children 5 and younger  
(older siblings welcome)

#### Saturday Mornings

Led by NATASHA FENSTER & STEVE EPSTEIN



Join us at 11:00 am on Zoom  
for a warm family Shabbat experience!

<https://zoom.us/j/93618704145>

Meeting ID: 936 1870 4145

#### 2020-2021 Dates

September 12

October 17

November 14

December 5

January 9

February 20

March 20

April 10

May 8

June 5

Questions? Contact Jami Fener [youngfamilies@tbe.org](mailto:youngfamilies@tbe.org)  
Temple Beth El, 350 Roxbury Rd., Stamford, CT 203-322-6901

Like [facebook.com/youngfamiliesTBE](https://www.facebook.com/youngfamiliesTBE)



## ADULT HEBREW CLASS with SUSAN SHAPIRO

10 Sessions starting on January 7  
at 7:00pm on Zoom

Learn to read Hebrew and chant the prayers of the worship service with Sue Shapiro. To register, contact Lisa Gittelman-Udi at [eddir@tbe.org](mailto:eddir@tbe.org) or call the TBE office at 203-322-6901, ext. 301.



## CONGREGATIONAL BOOK DISCUSSION

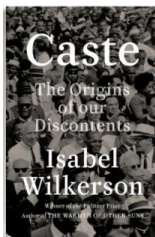
Sponsored by

Sisterhood and the Tzedek Committee

Monday, February 22 at 7:30pm

A congregation-wide read of *Caste*, by Isabel Wilkerson, will be led by Dora Salm. Ms. Wilkerson is a Pulitzer Prize-winning, bestselling author. In *Caste*, she examines the unspoken caste system that has shaped America and shows how our lives today are still defined by a hierarchy of human divisions.

(Zoom link available in the Shabbat Announcements)



## ADULT EDUCATION

### COFFEE WITH RABBI G.

#### PIRKEI AVOT - ETHICS OF OUR ANCESTORS

Join Rabbi Gerry Ginsburg

Monday afternoons at 1:30pm on Zoom

January 11, 18, 25 | February 1

BRING YOUR OWN COFFEE.

WE'LL PROVIDE THE CONVERSATION.

(Zoom link available in the Shabbat Announcements)



### SCOTCH AND TORAH

Learn Torah with TBE Men's Club

Thursday evenings at 8:45pm on Zoom

Moderated by Rabbi Gerry Ginsburg



Relax and take a sip of your favorite beverage as we discuss the weekly Torah portion.

You don't have to be a member of the Men's Club to participate, nor do you need to be male! Everyone is invited.

(Zoom link available in the Shabbat Announcements)

### SISTERHOOD BOOK GROUP

Monday, January 11 at 7:30pm on Zoom

Join Sisterhood member Dora Salm who will lead us in a discussion about Kim Michelle Richardson's book, "The Book Woman of Troublesome Creek." As a member of the Pack Horse Library Project, Cussy delivers books to the hill folk of Troublesome; however, she is not particularly welcomed. Discover her struggles and determination to succeed.

(Zoom link available in the Shabbat Announcements)



### MEDITATION AND GUIDED IMAGERY

with

Katie Kaplan, Cantorial Soloist

Tuesday, January 12 at 7:00pm



Join us as we use breath, chant, and visualization to carve out a moment of peace in our lives.

(Zoom link available in the Shabbat Announcements)

### INTERFAITH COUNCIL OF SOUTHWESTERN CT

Midwinter Theological Program on Zoom

*The Life Worth Living? An Exploration of Religious Responses*

Thursday, January 28 at 7:00pm

With Rabbi Joshua Hammerman



### PRE-PASSOVER STUDY

with RABBI GERRY GINSBURG

Monday, February 8, 15 & 22 | March 1, 8 & 15

1:30pm

(Zoom link available in the Shabbat Announcements)





## MAZAL TOV TO...

*Betsy and Kevan Herold on the birth of a grandson, Isaac Jake, born to Rachel and Richard Priem,*

*Loralee & Philip Granowitz on the birth of a grandson, Raphael Schleffer, born to Eliza and Andy Granowitz.*

*Ruth Kwartin on the birth of a great grandson, Jude Elliott, born to Wendy Kwartin and Jesse Sayers.*

*Renee Migdal and Sam Judd on the birth of a granddaughter, Marlowe Willoughby, born to Heather and Adam Judd.*



Share your family's simcha (engagement, marriage, birth, Bar or Bat Mitzvah of a child or grandchild) and other joyous event. Just contact the TBE office at [office@tbe.org](mailto:office@tbe.org) or 203-322-6901, ext. 301.

## THANK YOU FOR SPONSORING THE SHABBAT ANNOUNCEMENTS

SHERRY and KEN COHEN  
DEBBIE EISENSTEIN and JON EISENSTEIN  
RACHEL and KEITH FRIEDMAN  
LORI and RAPH GILBERT  
NANCY and JEFFREY HERZ  
DANIELLE and LAEL SHAPIRO

## HONORABLE MENSCHEN TODAH RABAH TO OUR TORAH READERS!

ALAN BRIER ☆ JONATHAN BRIER ☆ MICHAEL BRIER  
ALEX COHEN ☆ AUSTIN EISENSTEIN  
AARON FRIEDMAN ☆ JOEL FRIEDMAN  
KEITH FRIEDMAN ☆ RACHEL FRIEDMAN  
ARIELLA FROMOWITZ ☆ DAVID FROMOWITZ  
MARK FROMOWITZ ☆ AMANDA GEFFNER  
ILANA GILBERT ☆ RAPH GILBERT  
RABBI GERRY GINSBURG ☆ LISA GROVE-RAIDER  
JACOB HERZ ☆ MOLLIE HERZ ☆ OWEN HERZ  
JESSE KALT ☆ CAROL KRIM ☆ JOSH LEVINE  
KATY MCCARTHY ☆ BERT MADWED ☆ MATT MILLER  
JULIE ROSENBERG ☆ SUSAN SCHNEIDERMAN  
MARGARET SHAMEER ☆ ETHAN SHAPIRO  
LAEL SHAPIRO ☆ LOIS SHAPIRO ☆ MAYA SHAPIRO  
MICHAEL SIEGEL ☆ MERYL SILVERSTEIN

## TBE Family Tu B'Shevat Seder

SAVE THE DATE!

Sunday, January 24, 2021 on Zoom!

Join us as we celebrate the birthday of the trees with music, blessings, tree fruit, grape juice, stories, and fun!

Students in our Religious School will help lead this event.

Watch for emails with detailed information coming soon!

WE'RE ALL  
IN THIS  
*Together*



## TBE MEN'S CLUB SPONSORS

### BLOOD DRIVE

**Wednesday, January 5, 2021**  
**11:00am - 3:30pm**

[www.redcrossblood.org/give.html/donation-time](http://www.redcrossblood.org/give.html/donation-time)

**Tuesday, February 9, 2021**  
**1:00pm - 6:00pm**

*Details to follow...*

## Special Occasion?

**Sponsor The Shabbat E-announcements**  
(sent every week via e-mail)

**The Shabbat Announcements**  
(distributed each Shabbat at the Temple)  
**and the Shabbat-O-Gram**  
(e-mailed every Thursday night)

**All three publications for \$72**

All sponsors will be acknowledged at the beginning of each of these announcements and also listed in our bi-monthly Bulletin.

Call Mindy in the office at 322-6901 ext. 301.

# The Amazing Purim Race!



**SAVE THE DATE!**  
**Sunday, February 21**  
 for the  
**TBE AMAZING PURIM RACE!**

Join us for a Purim themed photo scavenger hunt around Stamford!

- We'll begin both in the TBE Parking lot and on Zoom
- Participants will each receive a *megillah* (scroll) with clues and trivia questions. The clues will lead you to a variety of locations in Stamford.
- Participants will take selfie photos at each location and look for answers to the questions on the *Megillah*.
- Participants have until Thursday, February 25 at 6:00pm to complete the scavenger hunt. Prizes will be awarded to winners at the Purim Service and Megillah Reading, Thursday, February 25.

WATCH FOR EMAILS WITH DETAILS AND REGISTRATION INFORMATION IN JANUARY!

**SAVE THE DATE!**

# TBE CELEBRATES PURIM!

**Thursday, February 25, 2021**

**5:15pm: CLOWN COLLEGE!**  
 Learn to be a clown: A ZOOM workshop taught by clowns! Face painting, balloon animals, magic tricks and more!

**6:00pm: PURIM FAMILY SERVICE AND MEGILLAH READING**  
 Join us on ZOOM for an amazing Purim experience led by Rabbi Joshua Hammerman and Katie Kaplan, Cantorial Soloist.

**JOIN THE MASK PARADE!**  
**WEAR YOUR MOST CREATIVE MASK, FACE PAINT, OR HAT!**  
 You will be spotlighted in your Zoom window.

**8:00pm: ADULT MEGILLAH READING ZOOM SESSION**


Purim activities will take place in lieu of regular Religious School sessions on this day.

WATCH FOR EMAILS WITH DETAILS AND REGISTRATION INFORMATION IN JANUARY!

# TBE Clubs Open House

## Wed January 13 at 7:30 pm

Learn about new Clubs forming!



A great way to get involved!

**Join Zoom Meeting**  
<https://us02web.zoom.us/j/84242421832>  
**Meeting ID: 842 4242 1832 | Passcode: 576636**



# TBE ADULT LEARNING

## Six Session Online Course



## TOGETHER & APART

The Future of Jewish Peoplehood

**Together & Apart: The Future of Jewish Peoplehood** explores one of the most pressing issues facing the Jewish world today – how we move from being a people with no permanent home to one with two permanent homes.

This series addresses the complex features of Jewish peoplehood inherent in our tradition and in our history. Who are we? What does it mean to be a member of the Jewish people? And what are some of the fundamental values that this encompasses?

Over 6 online sessions we will examine the contemporary forces challenging peoplehood, including nationalism, antisemitism, dual-loyalty, and identity politics, and imagine new conceptual frameworks that can help sustain and grow the story of our people for a new millennium.

### Hartman Online iEngage Course

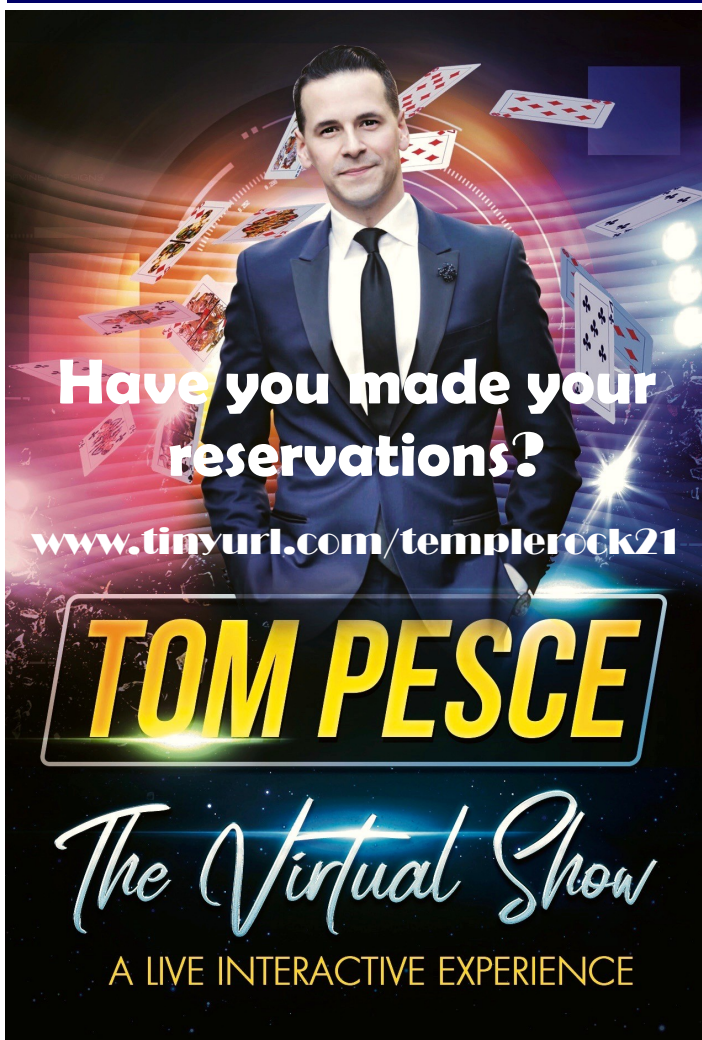
**Led by Rabbi Joshua Hammerman**

**Tuesday evenings: 7:00-8:30pm**

<b>January 5:</b>	<b>From No Home to Two Homes</b>
<b>January 19:</b>	<b>On Universalism and Particularism</b>
<b>February 2:</b>	<b>Between Nationalism, Ultra-Nationalism, and Fascism</b>
<b>February 16:</b>	<b>Antisemitism as a Divisive Force</b>
<b>February 23:</b>	<b>What's Good for the Jews?</b>
	<b>Identity Politics in North America</b>
<b>March 2:</b>	<b>At-Homeness and Conclusions</b>

**Register to Attend: <http://tinyurl.com/tbe-shta>**  
**You will receive ZOOM information when you register.**

**Temple Beth El, 350 Roxbury Rd., Stamford, CT 06902**  
**203-322-6901      [www.tbe.org](http://www.tbe.org)      [office@tbe.org](mailto:office@tbe.org)**



**Have you made your reservations?**

[www.tinyurl.com/templerock21](http://www.tinyurl.com/templerock21)

**TOM PESCE**

*The Virtual Show*

A LIVE INTERACTIVE EXPERIENCE

#### HOLIDAY GIFTS COLLECTED FOR LOCAL SHELTERS

Thank you to all of our members who donated holiday gifts that were delivered to our local shelters.

120 pairs of men's socks  
85 hats  
53 pairs of gloves  
11 pairs of women's socks  
8 scarves

Over 275 gifts were all lovingly gift wrapped by our volunteers.

Special thanks to our volunteers at Edgehill for knitting hats.

*Karen Resnick*



#### BETH EL CARES

*Beth El Cares focuses on chesed and tzedakah by helping the poor and unfortunate through mitzvot, both in our synagogue and the greater Stamford community. We welcome volunteers! This is the work we are currently engaged in. If you are interested in volunteering in any of these endeavors, please contact the person listed.*

**Reyut (Friendship):** Committed to serving the needs of those in our TBE community, including friendly visits, assistance with errands and transportation, Shabbat bag delivery to hospitalized patients. Contact Melanie Massell at [reyut@tbe.org](mailto:reyut@tbe.org) or 203-324-7190.

**Project Ezra:** Providing pre-shiva meals to the bereaved in the congregation. Contact Joy Katz at [joyakatz@yahoo.com](mailto:joyakatz@yahoo.com) or 203-329-3359.

**Serving the homeless:** Helping prepare and serve food — you can do either or both — to the homeless at New Covenant Center in Stamford on the fifth Thursday of each month. Times are 2:30-4:15 pm and 4:15-5:30 pm. Contact Amy Temple at [aetemple@optonline.net](mailto:aetemple@optonline.net) or 203-496-1309.

**High Holiday Food Drive:** Contact Sharon Turshen at 203-323-3872

**Christmas dinners at local homeless shelters:** Contact Amy Temple at [aetemple@optonline.net](mailto:aetemple@optonline.net) or 203-496-1309.

#### SEEKING SHABBAT GREETERS WHEN WE RETURN

Do you like getting a warm "Shabbat Shalom" as you enter shul on Saturday morning?

Our greeting program has been extremely well received. To keep this program going, we need volunteer greeters like you.

For more information Contact Barry Strom at [barrystrom@gmail.com](mailto:barrystrom@gmail.com)

Thanks for helping make Temple Beth El a warm and welcoming place to be.

#### CELEBRATING A SPECIAL EVENT? COMMEMORATING A YAHRTZEIT?

Please consider sponsoring a VIRTUAL Kiddush, following Shabbat Services, or an Oneg Shabbat, following our Friday evening services.

Contact Steven Lander for all of the new, reasonably priced Kiddush options at 322-6901, ext. 304 or [execdir@tbe.org](mailto:execdir@tbe.org).

#### PAY YOUR DUES ONLINE

Go to [www.tbe.org/donate](http://www.tbe.org/donate) and click on member payments.

Questions? Contact Linda at 203-322-6901, ext. 302 or [lindar@tbe.org](mailto:lindar@tbe.org).



Dear Fellow TBE Members,

As with everything else in 2020, providing holiday meals at the shelters was DIFFERENT than in past years!!

Looking at the positive side of things, though, here is what we as a team were able to accomplish:

- We provided festive meals to residents at three shelters.
- We provided gifts to residents at three shelters
- We came together to help our community.
- We stayed safe and did not contribute to the spread of COVID in our community.

It is hard to put into words the gratitude I feel toward all of you for volunteering to help with the TBE Christmas Eve lunch/dinners, despite the trying times many of us have been experiencing ourselves. This has not been an easy year for any of us, yet we came together as a community to do what we could to brighten people's day at the holidays. Leading up to this event I had some concern over whether we, as a community, could still provide support to three shelters given what our own members were going through this year. But I am happy to say my concerns were unfounded...We had no trouble getting all the donations for the food, gifts, paper goods, and money needed to pull off this event.

None of it would be possible without all of you and the many ways you contributed toward this massive event. Many of you have volunteered for 10+ years. This year we continued to get new people jumping in to volunteer and join the group. I can't imagine at any other temple we would get such a huge response to a call for help especially during such a difficult year for everyone.

In total we had over 20 families contributing money. In total we had 40 families donating food, paper goods and gifts.

I want to say a special thanks to **Karen Resnick** and **Joy Katz** who were the site leaders at New Covenant and Pacific House and are amazing partners to work with. We had to change our process this year, but it worked very smoothly and we may adopt some aspects for next year too.

We did miss a few things this year due to COVID constraints:

- Santa and Mrs. Claus.
- The three amazingly inspiring choirs usually led by Caryl Poser, Sue Schneiderman and Leslie Heyison/Jodi Maxner.
- Rabbi Hammerman and Mara saying words of wisdom to the residents at the shelters.

We are really looking forward to December 24, 2021 when we can hear those awesome voices lifting our spirits, see Santa and Mrs. Claus who generate bright smiles on everyone's faces, and hear Rabbi Hammerman's words to the shelter residents.

I am including an apology in case I have left anyone out of the acknowledgements or the email distribution. Even if I missed your name, please know I appreciate what you do to make this day possible.

Wishing everyone a safe, healthy, COVID-free and happy 2021!

*Amy Temple*





## MEN'S CLUB

Hey there. If you have ideas for Men's Club or just want to vent about life, the pandemic, the Jets, etc., drop me an email at [joshlevine@tbe.org](mailto:joshlevine@tbe.org).

The theme of this article is "connect" because connecting is critical these days.

Rumor has it we are in a global pandemic, but the Men's Club has been active. Here are some of the ways we are staying connected...

- Sukkah – we built it, we used it and we took it down. Seems simple, but it provided three opportunities for a bunch of us to get together and connect. All part of Hashem's plan.
- TBE Pickem Pool – a group of us picked football teams to win on a weekly basis. It has been fun following this year's crazy NFL season along with this cohort. Who knew Fantasy Sports were an easy way to connect?
- Monthly Men's Club Meetings – this is your chance to connect with some of the wisest leaders in the TBE community and have your voice heard. Meetings are held virtually on the last Wednesday of every month. Next meetings are January 27 and February 24.
- Scotch and Torah – learning Torah is a mitzvah and what else are you doing on Thursday's at 8:45pm? Women are welcome and encouraged to join. It's been fun connecting and learning from each other with Rabbi Gerry. Give it a try.

What's next...

- Hearing Men's Voices – this one's just for Men, sorry ladies. These are a series of meaningful small group discussions led by a trained facilitator. The goal is to connect and learn from each other as well as explore our own feelings about the meaning of life. Stay tuned.
- TBE Clubs – not specific to Men's Club, but a key part of our mission. If you have not heard of TBE Clubs, you may want to check your junk mail settings. The sky is the limit with ways to connect to the community (e.g. Ukulele Club). I encourage you to get involved.
- World-Wide Wrap – Sunday February 7. Never put on Tefillin? No problem. You'll be tefillin fine once you give it a try. Open to everyone. Look out for details.
- Yellow Candles – every year Men's Club commemorates Holocaust Remembrance Day (April 7), by delivering yellow candles, modeled after the traditional Yahrzeit candles. We are proud to continue this tradition to honor our ancestors.
- Poker Fundraiser – a virtual, fun way to connect and raise money for a good cause. Please reach out if you want to help organize.

With your help, we can do more. Men's Club is what you make of it. Get involved.

*Josh Levine*



## SISTERHOOD

### Torah Fund Pin for 5780 (2019-2020)



Every year Torah Fund offers a special pin for a donation of \$180. The theme of this year's pin is Chesed - "kindness" or "loving kindness" conveying the deep love of Jewish acts of kindness which are done without thought of reward.

The 5780 (2019-2020) Torah Fund pin depicts a heart surrounded by three circles, one larger than the next. This symbolizes the ever-widening realms of generosity: From family, to community, to the larger world; from North America, to Israel, to the world. As it is said in Psalm 89, "May we build a world of kindness." What message could be more appropriate in today's world? Purchase from Suzanne Stone, [suzanneshorn@yahoo.com](mailto:suzanneshorn@yahoo.com), 203-866-2273.

### SISTERHOOD CLOTHING DRIVE



*Thank you to all those who participated!*







Although all or most of us are looking forward to leaving 2020 behind and starting a new and hopefully better year in 2021, I consider myself lucky! I spent more time with my kids and my mom, who at 94 still lives in the house I grew up in – and we really did have fun (most of the time). I didn't have to wait in long lines for free food or worry about how my rent was going to be paid. I did regret that I did not keep a journal of my daily activities, such as working, lots of walking/hiking and taking car trips, mostly to the grocery store. In addition, thanks to Sisterhood, I also kept busy with my Sisterhood Board planning events which I hope provided enrichment to our community. Sisterhood continues to be financially in good shape. Thank you, Sisterhood members!

Your Sisterhood membership of \$36 is hard at work. Besides the many Zoom programs, the Sisterhood purchased Hanukkah candles, gelt and dreidels for Beth El students, and gift cards and Hanukkah wishes were sent to our college freshman. Todah Rabah to **Suzanne Fruithandler** and **Risa Pollack** for sending the gift cards.

Thank you to everyone who donated to our very successful Sisterhood clothing drive! A special thank you to **Steve Lander** who suggested TBE store all the clothing from the October drive in TBE when the pickup was cancelled due to Covid. Thanks to **Rad** and **Alberto** who carried all the bags into the music room and to **Judy Schneiderman** and **Donna Wolff** who made sure everything ran smoothly. A very special thank you to **Joe Heyison** for helping schlep bags into the truck!

Our Candy Trivia was sweet! Thanks to everyone who attended!!

Thank you to **Dora Salm**, who, once again, led our book group with the book, *"The Seven or Eight Deaths of Stella Fortuna"* and a surprise visitor, the author, Juliet Grames!

#### SISTERHOOD'S WONDERFULLY, SUCCESSFUL DECEMBER EVENTS

Thanks to **Lisa Grove-Raider** for introducing us to her **Great-Uncle Kurt Kleinman**, a Holocaust survivor, with his video and book, *"The Boy Who Followed His Father into Auschwitz."* We were thrilled that the author, Jeremy Dronefield, was able to Zoom in from England. This event is saved on TBE's iCloud recording, if you would like to view it.

**Origami** - We became virtuosos in the ancient art of paper-folding with the creation of a hugging person and a jumping frog with Rachel Vagy of Brooklyn, NY. If anyone missed this event, I have a detailed video.

**Award-Winning Holiday Advertisements** - We joined Frank Izzo as he curated some of the most heart-warming, funny, iconic holiday TV commercials from around the world.

#### SISTERHOOD EVENTS FOR 2021

##### Sisterhood Book Group Discussions Monday, January 11 at 7:30pm

Join Sisterhood member, Dora Salm, who will lead us in a discussion about Kim Michelle Richardson's book, *The Book*

*Continued on page 21...*

#### NEW SISTERHOOD COOKBOOK

Sisterhood has created a beautiful cookbook full of delicious recipes from our members and friends. It includes cherished family heirloom recipes as well as modern variations and ingredients our great-grandmothers would never have heard of.

Although it took over a year to create, our fabulous team of volunteers led by Fran Ginsburg, "chef de cuisine," tested every recipe cooking and baking throughout the pandemic!

Sisterhood is delighted to offer each member family one cookbook, free-of-charge, as our gift to you. If you would like additional copies, they are \$6 each (sold at cost). Pre-order your copies at this link: [www.tinyurl.com/cookbook100](http://www.tinyurl.com/cookbook100). We will only be ordering the number of copies that are placed through pre-orders. You have the entire month of January to place your order. If you have questions, please contact Beth Silver at [beth@silverconsulting.net](mailto:beth@silverconsulting.net).

A sample of something delicious waits for you on page 21 of this Bulletin.

Happy Cooking!

*With love from Sisterhood*



Please contact Sisterhood at [sisterhood@tbe.org](mailto:sisterhood@tbe.org) or feel free to call/email a Sisterhood board member with any comments. We love hearing from you and are always looking for volunteers!

##### Karen Resnick, President

203-536-3115, [kmr925@sbcglobal.net](mailto:kmr925@sbcglobal.net)

##### Judy Schneiderman, Treasurer

203-569-4969, [jrs2125@optonline.net](mailto:jrs2125@optonline.net)

##### Dora Salm, Secretary

203-461-8596, [d\\_salm@yahoo.com](mailto:d_salm@yahoo.com)

##### Barbara Berman, Gift Shop

203-329-7750, [bfberman@gmail.com](mailto:bfberman@gmail.com)

##### Donna Wolff, Board Member

917-601-1878, [donna@wolffmedco.com](mailto:donna@wolffmedco.com)

##### Paula Shulman, Board Member

203-461-9396, [paulashulman51@gmail.com](mailto:paulashulman51@gmail.com)

##### Juli Harris, Board Member

203-276-0589, [jaharris99@aol.com](mailto:jaharris99@aol.com)

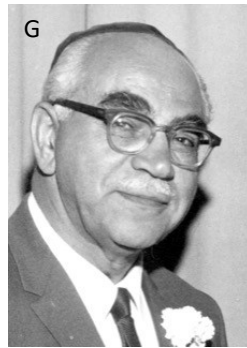
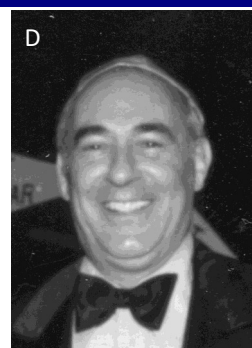
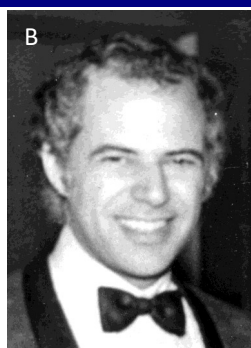
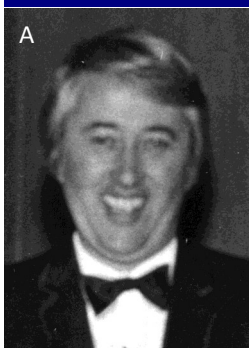
##### Naomi Sobel Marks, Board Member

203-273-4650, [nsobel@hotmail.com](mailto:nsobel@hotmail.com)

# Be A Matchmaker! Part III

CAN YOU MATCH THE PICTURES TO THE NAMES OF OUR MEN'S CLUB PRESIDENTS?

*The answers are on page 21...*



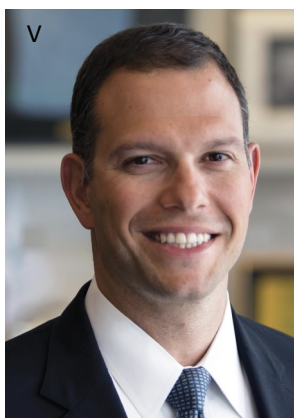
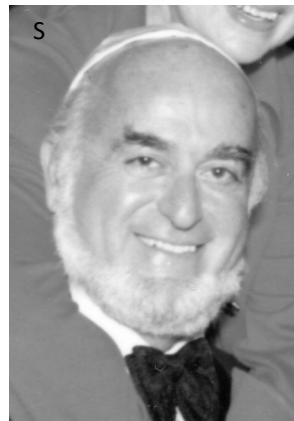
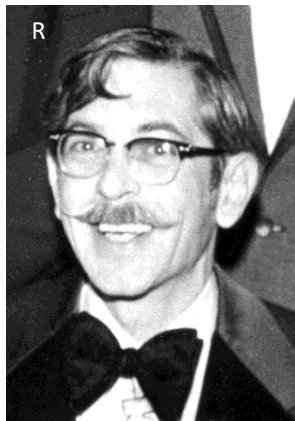
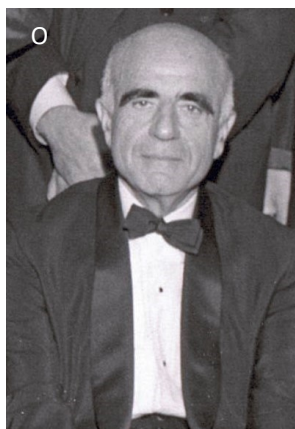
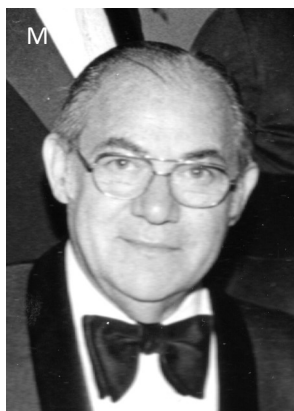
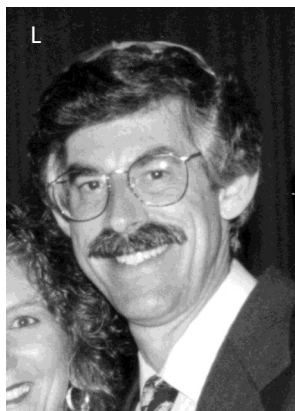
1. Abraham W. Golden 1949-1950
2. Irving Rosenbaum 1950-1952
3. Dr. Jason Salisbury 1952-1953
4. Harvey Peltz 1953-1955
5. Murray Goldenberg 1955-1957
6. Sidney Matthew Weiss 1957-1959
7. Norman Davidow 1959-1961
8. Jacob Malin 1961-1963
9. Harold Polis 1963-1965
10. Nathan Rabin 1965-1966
11. Peter J. Weissman 1966-1967
12. Dr. Louis Kronholtz 1967-1969
13. Albert Golin 1968-1969
14. Irving Lebow 1969-1971
15. Sidney Epstein 1971-1973

16. Frank Rosner 1973-1975
17. Edward Kaplin 1975-1977
18. Gordon Brown 1977-1979
19. Irving Lebow 1977-1981
20. Paul L. Lehman 1981-1983
21. Charles Kaye 1983- 1986
22. Dr. Warren J. Brandt 1986-1988
23. Jack Scherban 1988-1990
24. Alan Silberman 1990-1992
25. Wilfred Brewer & Dr. Alec Perlson 1992-1994
26. Rabbi Gerry L. Ginsburg 1994-1996
27. Timothy Wright 1996-1998
28. Dr. Barry Kanarek 1998-2000
29. Matt Miller 2019-2020
30. Joshua Levine 2020-



# 100 TEMPLE BETH EL

CELEBRATING OUR FIRST 100 YEARS







196 Greyrock Place  
Stamford, CT 06901  
Phone 203.921.4161  
Fax 203.921.4169

4200 Park Avenue  
Bridgeport, CT 06604  
Phone 203.659.3601  
www.ctjfs.org

November 25, 2020

Ken Temple  
Temple Beth El Stamford  
350 Roxbury Road  
Stamford, CT 06902

Dear Ken,

Schoke JFS is very proud of the fact that we do not turn anyone away who comes to us for assistance and it is your very generous contribution of masks for our Thanksgiving Comfort and Care drive which enables us to maintain and broaden the services we offer to those in their greatest moments of need. For many in our community, we are the agency of last resort.

Your investment in Schoke JFS offers compassionate hope and comfort to so many who turn to us when there seems to be nowhere else to go. I know those who turn to Schoke JFS for help would like to thank you personally if they could.

On behalf of the over 5,000 clients we serve and everyone here at Schoke Jewish Family Service, we thank you for your generous response to our expressed needs. From home furnishings, to feminine hygiene products to giving your precious time in board meetings and pantry service, we appreciate your valuable contributions to the JFS mission.

Thank you once again for being an important member of our Schoke JFS family. With your generous help, you offer hope and support to so many. We are truly grateful for your partnership.

Sincerely,

Matt Greenberg  
CEO

*For tax purposes, please note that no goods or services were received for this donation.*

Accredited by Council on Accreditation of Services for Families and Children. Licensed by State of CT.  
Recipient Agency of: United Jewish Federation of Stamford, New Canaan, and Darien  
United Way of Connecticut • Federation for Jewish Philanthropy of Upper Fairfield County

**DONATE ONLINE**  
Go to: [www.tbe.org/donate/](http://www.tbe.org/donate/)

### OPPORTUNITIES FOR GIVING

- ☒ Adult Education Fund
- ☒ Beth El Cares
- ☒ Beth Elders
- ☒ Debra Wald Goldberg Kindergarten Scholarship Fund
- ☒ Frank & Rose Rosner Memorial Fund (maintenance)
- ☒ General Fund
- ☒ Kiddush Fund
- ☒ Matthew Klein Memorial Sanctuary Garden Fund
- ☒ Emmet Manheim Playground Fund
- ☒ Mitzvah Garden Fund
- ☒ Music Fund
- ☒ Prayer Book Fund
- ☒ Project Ezra Fund
- ☒ Religious School Fund
- ☒ Reyut Shabbat Bag Fund
- ☒ Security Fund
- ☒ Solar Fund in memory of Norma Mann, z'l
- ☒ Youth Fund

### DISCRETIONARY FUNDS

- ☒ Rabbi Joshua Hammerman's Mitzvah Fund
- ☒ Cantorial Soloist Katie Kaplan's Mitzvah Fund
- ☒ Hazzan Sidney Rabinowitz' Mitzvah Fund

### ATTENTION PARENTS OF COLLEGE STUDENTS

Rabbi Hammerman would like to stay in touch with your child while he/she is away at college. Please send his/her e-mail address to Beth in the Temple office at [adminassist@tbe.org](mailto:adminassist@tbe.org). *Thank you!*



### *Get involved, please...*

Help Wanted! In order to maintain our vibrant and dynamic community, the Fund-Raising Committee needs more members to support TBE and volunteer their skills and talents. Many of these opportunities ask for very small-time commitments. Please consider getting involved with the:

Annual Appeal | Temple Rock | Cantor's Concert

If you are interested in volunteering, please contact us and we will give you more information.

Thank you!

Art Laichtman  
Fund-Raising Chair  
[aelaichtman@optimum.net](mailto:aelaichtman@optimum.net)

*Every brick has  
a story to tell...*

**100**  
**TEMPLE BETH EL**  
CELEBRATING OUR FIRST 100 YEARS

**Paver Campaign**

**Celebrating Our First 100 Years**

**WATCH FOR DETAILS!**

### TREE OF LIFE



A beautiful way to commemorate a special occasion is to purchase a "leaf" on our beautiful "Tree of Life" sculpture adorning our Temple lobby. There are many more leaves available for your own personal inscriptions.

The following categories are still available:

<b>Triple Chai</b>	<b>\$5,400</b>
<b>Silver Leaves - Gold Border</b>	<b>\$750</b>
<b>Silver Leaves</b>	<b>\$250</b>

### CONTRIBUTING SHARES OF STOCK TO TEMPLE BETH EL

One way to boost your charitable contributions to Temple Beth El is to give shares of appreciated stock instead of cash. You do not pay any tax on your capital gain, and your charitable deduction is the shares' entire fair market value.

Beth El members may contribute shares of stock to satisfy their dues pledge, their annual fund pledge, and other contributions to the Temple.

After consulting your tax advisor, please contact the TBE office at 203-322-6901.



## WE ARE GRATEFUL FOR YOUR CONTRIBUTIONS

### IN HONOR OF:

#### MAYA SHAPIRO BECOMING A BAT MITZVAH

Lois Shapiro

#### RABBI JOSHUA HAMMERMAN FOR INSPIRATIONAL AND THOUGHT PROVOKING SERMONS FOR TEMPLE BETH EL

Daniel Wolfson & Family

#### RABBI JOSHUA HAMMERMAN

Ellen & Art Laichtman

#### KATIE KAPLAN, CANTORIAL SOLOIST

Ellen & Art Laichtman

#### STEVEN LANDER

Ellen & Art Laichtman

#### STAN FRIEDMAN

Ellen & Art Laichtman

#### JUDY ARONIN

Ellen & Art Laichtman

#### LISA MANHEIM

Ellen & Art Laichtman

#### MINDY ROGOFF

Ellen & Art Laichtman

#### DAN YOUNG

Ellen & Art Laichtman

#### THE BIRTH OF JONAH ALEXANDER WISHINGRAD

Denise & David Greenman

#### THE MARRIAGE OF SAM GINSBURG AND RAE WYSE

Karen, Rich & Geoff Hainbach

#### THE BIRTH OF LUCY JUNE GINSBURG

Karen, Rich & Geoff Hainbach

#### SARA ROTHKOPF'S MARRIAGE TO ANDREW ELLINGTON

Lori & Bruce Tobin

#### SUZANNE & NORMAN STONE FOR THEIR KINDNESS

Marsha Colten & Robert Cohen

#### THE BIRTH OF RAPHAEL SCHLEFFER GRANOWITZ

Marsha Colten & Robert Cohen, Beverly & David Stein

#### EILEEN H. ROSNER - IN APPRECIATION

Sheila Romanowitz

#### SUSAN SCHNEIDERMAN - IN APPRECIATION

Sheila Romanowitz

#### RABBI JOSHUA HAMMERMAN FOR ALL HE DOES FOR THE ADULT B'NAI MITZVAH CLASS

Melody Penner Bryant

### RABBI JOSHUA HAMMERMAN MITZVAH FUND

#### *In honor of...*

In appreciation by Debra Adler-Klein

Alex Cohen becoming a Bar Mitzvah by Sherry and Ken Cohen

#### *In memory of...*

Lawrence Nussdorf, z'l, by Ellie Mirne

Jed Isaacs, z'l, by Susan & Richard Blomberg

### KATIE KAPLAN, CANTORIAL SOLOIST MITZVAH FUND

#### *In honor of...*

Alex Cohen becoming a Bar Mitzvah by Sherry & Ken Cohen

#### *In memory of...*

Lawrence Nussdorf, z'l, by Ellie Mirne

Freda Novick, z'l, by Meryl & Hank Silverstein

Etta Rich, z'l, by Meryl & Hank Silverstein

### EMMET MANHEIM PLAYGROUND FUND

#### *In honor of...*

**Aaron Friedman becoming a Bar Mitzvah** by Marcia & Alvan Kaunfer, Carol Ingall & Stephan Brumberg, Elizabeth Knight, Amy, Jon, Hannah & Abigail Brier, Amy, Aron, Jake & Ben Davidson, Michal Rubin, Ben-Zvi Family, Gisele Terry, Frances Oelbaum & Richard Serviss, Kahla & Gordon Cooper, Ferris Family, Lombardo Family, Kolev Family, Dani, Lael, Maya & Jonah Shapiro, Kalinsky Family, Elliot Nerenberg, Sara Shapiro-Plevan & Bill Plevan, Anne Schulman, Rende Family, Lisa & Peter Raider, Wolly/Horowitz Family, Levine Family, Tronick Family

### MATTHEW KLEIN MEMORIAL GARDEN

#### *In memory of...*

Matthew Klein, z'l, by Debra Adler-Klein

### INFORMATION FOR YOU...

When making a donation an acknowledgement will be mailed to the designee for donations of \$10 or more. Donations of less than \$10 will be acknowledged only in the Bulletin. All donations will be published in the Bulletin unless you state that you wish to be anonymous.

### YOUTH PROGRAMING FUND

#### *In memory of...*

Yale Kweskin, z'l, by Ilene & Jim Locker & Family

### SHIVA NOTICES AVAILABLE ON-LINE

Congregants who are looking for shiva information can now quickly look online instead of searching their inbox for the announcement or calling the synagogue office. Just go to TBE's website ([www.tbe.org](http://www.tbe.org)) and click "Shiva Notices" under the WHAT'S NEW menu.

### YIZKOR

#### *Passover 2020*

#### *In memory of...*

Gerty and Curtis Hayworth, z'l, by Karen, Rich and Geoff Hainbach

#### *Shavuot 2020*

#### *In memory of...*

Gerty and Curtis Hayworth, z'l, by Karen, Rich and Geoff Hainbach



## REMEMBERING OUR LOVED ONES



Joanne & Marshall Goldberg ..... **RUTH ABRAMS**  
 Marlyn & Rich Agatstein ..... **CHARLOTTE ACKERMAN**  
 Dayna, Dave, Aaron & Andrew Patashnik ..... **ELAINE ALBERT**  
 Binnie Ditesheim ..... **RUTH ATKINS**  
 Nancy Greene ..... **D. DAVID BERMAN**  
 Amy & Mel Bloomenthal ... **SARAH & SAMUEL BLOOMENTHAL**  
 Binnie Ditesheim ..... **GERARD DITESHEIM**  
 Mina Roth-Dornfeld ..... **JACOB DORNFELD**  
 Barbara & Ed Drotman ..... **RUTH DROTMAN**  
 Carolyn & Phil Farin ..... **RAY & CHARLES FARIN**  
 Joseph Field ..... **DOROTHY FIELD**  
 Beth & Jeff Goodman & Family ..... **BEVERLY FRANKEL**  
 Joseph Field ..... **CELIA & GEORGE FREED**  
 Barbara & Stan Friedman ..... **MARTHA FRIEDMAN**  
 Sally & Jim Rothkopf ..... **MAY FRIEDMAN**  
 Phyllis & Harvey Walzer ..... **FRANCIS GOLDBERG**  
 Denise & David Greenman ..... **SANDRA GREENMAN**  
 Steven Grushkin & Family ..... **JOSEPHINE GRUSHKIN**  
 Leonor Lopez ..... **CAROLINA HALPERN**  
 Karen, Rich & Geoff Hainbach ..... **GERTY HAYWORTH**  
 Gail Solomon Hecht & Harvey Hecht ..... **SAMUEL HECHT**  
 Steve Grushkin & Family ..... **BERNARD HELLMAN**  
 Betsy & Kevan Herold ..... **SIDNEY HEROLD**  
 Ginette Kellner ..... **JACOB HOLLAND**  
 Jerry Jacobs & Family ..... **BOBBI JACOBS**  
 Sari & Alan Jaffe ..... **DAVID JAFFE**  
 Devra Jaffe-Berkowitz & Family ..... **DAVID JAFFE**  
 Joseph Field ..... **SAMUEL KANREK**  
 Sharon & Steven Katz ..... **HERBY KATZ**  
 Gail & Raymond Walter ..... **JULES KELLNER**  
 Ilene & Michael Koester ..... **ROSALIE KOESTER**  
 Samuel Kravitz & Family ..... **FRIEDA KRAVITZ**  
 Stephanie & Larry Sherman ..... **LILLIAN LEVINE**  
 Sheila Romanowitz ..... **CLARA & LOUIS LEVY**  
 Magida Family ..... **FRANCES MAGIDA**  
 Barbara Malloy ..... **HOWARD MALLOY**  
 Laura Markowitz ..... **DAVID MARKOWITZ**  
 Sandy & David Oberhand ..... **OTTO MARX**  
 Stanley Novack ..... **ABRAHAM NOVACK**  
 Sandy & David Oberhand ..... **CELIA OBERHAND**  
 Robin Evans & Jeffrey Perry ..... **ALEXANDER PERRY**  
 Debra & Stephen Pollack ..... **JASON POLLACK**  
 Binnie Ditesheim ..... **RONI PORDY**  
 Lori & Stuart Ratner ..... **JEROME RATNER**  
 Rhonna & Brian Rogol ..... **LEONARD WEBER**  
 Olga & Ron Goldstein ..... **CARRIE ROGOWSKY**  
 Sheila Romanowitz ..... **EVA & ABE ROMANOWITZ**  
 Judy Schneiderman ..... **MORRIS ROSENBERG**  
 Caroline Temlock Teichman & Marc Teichman ..... **ROSE RUBIN**  
 Gail & Bruce Stone ..... **CELIA SALTZMAN**  
 Susan & Carl Shapiro ..... **IRVING SHAPIRO**  
 Susan, Alex & Rachel Plutzer ..... **NATHAN SIEMAN**  
 Mary C. & Alan Silberman ..... **JAMES SILBERMAN**  
 Alan Sosnowitz ..... **IRVING SOSNOWITZ**  
 Ellen & Joel Mellis ..... **WILLIAM STEINAM**  
 Lori & Bruce Tobin ..... **GLORIA TOBIN**

Kathy Cooperman & Elliott Tuckel ..... **EVA TUCKEL**  
 Phyllis & Harvey Walzer ..... **DUSTIN WALZER**  
 Barbara & Stan Friedman ..... **IRVING WARSAW**  
 Dana & Carl Weinberg ..... **MORTON WEINBERG**  
 Howard Weinberg ..... **MORTON WEINBERG**  
 Harriet & Seymour Weinstein ..... **ADOLPH WEINSTEIN**  
 Fran & Rabbi Gerry Ginsburg ..... **JANE & WALTER WERTHEIM**  
 Debra & Stephen Pollack ..... **MARTIN WINTHROP**

### IN MEMORY OF:

**GEORGE ESSENFELD, z'I**  
 Caryl & Peter Poser, Eileen & Fred Springer, Betsy & Peter Kempner, Sari & Alan Jaffe, Miriam & Steven Sosnick, Lisa Grove-Raider & Peter Raider  
**MARJORIE ROSENTHAL, z'I**  
 Devra Jaffe-Berkowitz & Parry Berkowitz  
**RICHARD PIANIN, z'I**  
 Devra Jaffe-Berkowitz & Parry Berkowitz  
**EMANUEL ROTHMAN, z'I**  
 Devra Jaffe-Berkowitz & Parry Berkowitz  
**JULIUS SHENKER, z'I**  
 Devra Jaffe-Berkowitz & Parry Berkowitz  
**CLAIRE STANGER, z'I**  
 Pamela Tinkham, Fran & Rabbi Gerry Ginsburg  
**AMALIA HANIT, z'I**  
 Beth & Pete Silver, Sari & Alan Jaffe, Margie & Barry Afergan  
**SHIRLEY DENNIS, z'I**  
 Debra Davidson & Chris Ihm  
**HERB KAUFMAN, z'I**  
 Barbara & Warren Brandt  
**IDA WALLACH, z'I**  
 Beverly & David Stein, Florence Aronson, Denise & David Greenman, Maxine & Jay Freilich, Marsha Colten & Robert Cohen  
**LAWRENCE NUSSDORF, z'I**  
 Carol & Allen Krim, Sue Frieden, Marsha Colten & Robert Cohen  
**JANE SHEDLIN, z'I**  
 Marsha Colten & Robert Cohen  
**NAOMI FRIEDMAN, z'I**  
 Sue & Carl Shapiro  
**PHYLLIS KAHN, z'I**  
 Linda & Joe Rothman, Sheila Romanowitz  
**HERBERT SACKIN, z'I**  
 Janet & Ivan Brown

### WE MOURN THE PASSING OF...

**IDA WALLACH**, mother of Lorelee Granowitz  
**LAWRENCE NUSSDORF**, brother of Ellie Mirne  
**LEONARD KLEIN**, father of Stacy Nekritz  
**JANE SHEDLIN**, mother of Stan Lee  
**PHYLLIS KAHN**, sister of Bruce Kahn  
**HERBERT SACKIN**, father of Jed Sackin  
**IRENE ROSENTHAL**, mother of Allison Ostroff  
**ANDY POLAK**, father of Hilary & Ilana Polak



## HAVE YOU VISITED OUR WEBSITE?

[www.tbe.org](http://www.tbe.org)

Find out about the latest news and upcoming activities ... access our online membership directory ... register for events and make donations ... connect to TBE's Twitter and Facebook pages ... and much more.

## DID YOU KNOW?

TBE offers free family membership for the first year to any member's child on the occasion of his or her marriage. For more information, contact Steve Lander at 203-322-6901, ext. 304.



## MEMORIAL PLAQUES



Inscribe the names of your loved ones on a plaque for our Chapel wall along with a light to commemorate their *yahrtzeit* and *yizkor* observances throughout the year.

For details, contact Mindy at [office@tbe.org](mailto:office@tbe.org) or 203-322-6901, ext. 301.

## THE TBE 100 MITZVAH PROJECT

The TBE 100 Mitzvah Project provides opportunities for congregants to honor TBE's centennial through the performance of *gemilut hasadim* (acts of loving kindness) that help charitable organizations in need of volunteers and non-monetary contributions.

### Mitzvah Opportunities at the Schoke Jewish Family Service of Fairfield County

- **Work at the kosher food pantry** at SJFS. Distribute food during walk-in hours: Monday - Wednesday, 10:30 am-12:30 pm. Organize and maintain the pantry: Monday - Friday, 9 am - 4 pm.
- **Deliver meals and food items** to homebound clients. Time is flexible.
- **Participate in Mitzvah Monday** with your kids on the third Monday of each month (from 3 pm-5 pm). Bring kosher food items to the pantry and help stock shelves. GREAT for teens!
- **Visit a homebound client** for a "friendly visit" to alleviate loneliness. Time is flexible.
- **Donate food and non-food items.** Items can be dropped off at the TBE office or at SJFS.

If you are interested in doing one or more of these mitzvahs, please contact Jill Knopoff at (203) 921-4161. Don't forget to mention you're from TBE.

After completing a mitzvah, please send a note to [mitzvah100@tbe.org](mailto:mitzvah100@tbe.org) with the name or names of the family members who participated, the mitzvah, and a photo if possible.

## THE FUTURE OF THE JEWISH COMMUNITY IS IN YOUR HANDS.



## HOW WILL YOU ASSURE JEWISH TOMORROWS?

TEMPLE BETH EL  
350 Roxbury Road  
Stamford, CT 06902  
[www.tbe.org](http://www.tbe.org)



To create your Jewish legacy  
contact: Steven Lander  
[execdir@tbe.org](mailto:execdir@tbe.org)  
203-322-6901, ext. 304

## We Capture Your Precious Memories on Video...

### Weddings ♦ Bar/Bat Mitzvahs

### Proud to be the official TBE videographer

*Tom was able to capture the spirit and joy of our B'nai Mitzvah service and party in a video we will always treasure. He was also a pleasure to work with from start to finish.*

Jared Finkelstein

*If you are looking for a videographer, look no further! Tom was a delight to work with and the finished product was incredible. He created separate videos of my daughter's Bat Mitzvah service and celebration and captured all aspects of the joy of the day.*

Jill Teich

**Thomas Pace, Jr. ♦ 203.335.0168**  
**T & J Video Service**

We also transfer home movies/video to DVD.

fancier all the time.

The oil of joy (*shemen sasson*) in verse three? That's nothing less than the life-saving elixir, the vaccine, which brought tears of joy to the faces of those first responders who first received it, and like the Hanukkah oil, miraculously, an extra dose could be found in each vial. And now, as verse four proclaims, NOW the rebuilding can at last begin. Infrastructure week at last!

It's no coincidence that the Roaring 1920s followed the dismal, plague-infested end of the prior decade. There was so much pent up need for people to rip off the masks and come together, to celebrate and let loose.

But back in the 20th century's '20s, with that unleashing also came corruption, intolerance and the closing of America's gates to immigrants fleeing the instability of postwar Europe. The excesses of the '20s led to the crash of Wall Street and rise of fascism. Similarly, after the hopeful vision of Isaiah concludes, the next book in the Jewish biblical canon is Jeremiah, which brings us back to square one. It's like following "It's a Wonderful Life" with a screening of "Schindler's List."

Yes, the Bible tells us, it gets better. But then it gets much worse. And then it gets better again.

I truly hope 2021 will be a great, great year. I expect it to be just that. But the wild ride we've been on will not end.

For that reason, we need community more than ever. We need to continue to gain strength from one another, online and eventually back in our renewed temple building, with our new elevator, doors and restrooms - Isaiah doesn't mention rest rooms and an elevator, but in verse four he does speak of the doors when commenting on the "desolations of many generations" (*shomemot door - door*). OK, one bad pun is allowed.

And through it all, we will build from the many growth experiences of the past year, in particular the new partnerships forged with the Black and immigrant communities, and among fellow congregants.

As we join together to welcome in the new year, let's make one resolution above all - to bring to fulfillment the vision of Isaiah 61, to make this a year of divine pleasure,

where sanctity governs all our actions - led by our new President. And let 2021 be a year that will, as Isaiah promises, bring comfort to the many who mourn.

Rabbi Joshua Hammerman

## ANSWERS TO BE A MATCHMAKER from page 14-15

- |                         |                      |
|-------------------------|----------------------|
| A. Harvey Peltz         | M. Jacob Malin       |
| B. Peter Weissman       | N. Alan Silberman    |
| C. Albert Golin         | O. Abraham W. Golden |
| D. Irving Lebow         | P. Sam Haims         |
| E. Aaron Weissman       | Q. Matt Miller       |
| F. Sidney Epstein       | R. Edward Kaplin     |
| G. Noah Soloff          | S. Harold Polis      |
| H. Charles Kaye         | T. Frank Rosner      |
| I. Stanley Levine       | U. Eugene Gordon     |
| J. Norman Davidow       | V. Joshua Levine     |
| K. Rabbi Gerry Ginsburg | W. Paul L. Lehman    |
| L. Dr. Alec Perlson     |                      |

Woman of Troublesome Creek.

**Monday, February 22 at 7:30pm**

A congregation-wide read of *Caste*, by Isabel Wilkerson, will be led by Dora Salm in conjunction with the Tzedek Committee, Julie Rosenberg, Chair.

**Sisterhood Shabbat on April 10**, Leslie Heyison, Chair

Unfortunately, we have decided to put our **Annual Sisterhood Brunch** on hold this year, but we plan to have a very special brunch in the fall of 2021.

Please continue to contact me with your questions and ideas at [sisterhood@tbe.org](mailto:sisterhood@tbe.org).

We are always looking for new members. We would love to have you join us!

Have a wonderful New Year! And, on behalf of Sisterhood, stay safe!

With appreciation and joy,  
Karen Resnick

Enjoy this delicious recipe from Sari Jaffe that is included in Sisterhood's new cookbook.

### Easy Vegetable Soup

Sari Jaffe

#### Pareve or Dairy, Gluten-Free

- |                                    |   |
|------------------------------------|---|
| 2 cups escarole or kale, chopped   | 1 tsp. oregano                            |
| 2 cups baby spinach, chopped       | ½ tsp. salt                               |
| 1 red pepper, deseeded and chopped | ¼ tsp. black pepper                       |
| 1 cup chopped onion                | ¼ cup fresh parsley, chopped, or 2        |
| 2 garlic cloves, minced            | tblsp. dried                              |
| 6 cups low-sodium vegetable broth  | ¼ cup fresh basil, chopped, or 2          |
| 28 oz. can diced tomatoes          | tblsp. dried                              |
| 2 tsp. chopped fresh thyme         | 14 oz. can chick peas, drained (optional) |
|                                    | Parmesan cheese (optional)                |

Put escarole, spinach, onion, garlic, vegetable broth, diced tomatoes, thyme, and oregano in 8 quart soup pot. Cover and bring to boil. Reduce heat and simmer for 10 minutes partially covered. Stir in salt, black pepper, parsley, and basil. Add chick peas, if desired, and heat. Serve with sprinkle of Parmesan cheese on top.

Number of Servings: 6

Prep Time: 30 min.

This is my own version of a WW recipe. No points if you don't add the chickpeas or Parmesan cheese! I make it all winter, when I don't feel like eating a cold salad. Can be frozen.





# TBE Celebrates Hanukkah on Zoom





לדור ודור  
**L'Dor V'Dor**  
*from generation to generation*

**Tom Gallagher**  
Owner

**Locally owned and operated.**  
**Call us for personal and affordable service!**  
**203.359.9999**

***Our Family has been serving Your Family for generations!***



**Thomas M. Gallagher**  
**Funeral Home**  
**Your Hometown Jewish Funeral Home**

104 Myrtle Avenue | Stamford, Connecticut 06902 | [tom@gallagherfuneralhome.com](mailto:tom@gallagherfuneralhome.com)  
Not affiliated with Leo P. Gallagher Funeral Home

## FETHI PHOTOGRAPHY

cell: 914-629-2204

[fethic@me.com](mailto:fethic@me.com)

[www.fethiphotography.com](http://www.fethiphotography.com)

Experience working with TBE for over 25 years.

Ask your friends!



**MADDY SHAPIRO**

Sales Associate

REALTOR® of the Year 2011

203-940-5569 CELL

203-329-9792 HOME OFFICE

[Maddy.shapiro@cbmoves.com](mailto:Maddy.shapiro@cbmoves.com)



RESIDENTIAL BROKERAGE

Operated by a subsidiary of NRT LLC

[www.maddyshapiro.com](http://www.maddyshapiro.com)

## Artists' Market

EXTRAORDINARY ART & FRAMING

American Crafts: Glass, Wood, Ceramics & Jewelry  
Sophisticated Judaica: Mezuzahs, Menorahs, & More

Expert Frame Design and Manufacturing on Premises  
*"from the simple to the extraordinary"*

Fine Contemporary Photography & Original Graphics  
Specialist in M. C. Escher Original Masterworks

[www.ArtistsMarket.com](http://www.ArtistsMarket.com)

163 Main Street, Norwalk

203.846.2550

## ✓+ Math Tutoring SAT & ACT Preparation

**I. Jeff Turshen, Ph. D.**

- All Levels of Math - Middle School, High School (Basic to Advanced Placement), and College
- Experienced Teacher - High School & College

References provided upon request

203-323-3872

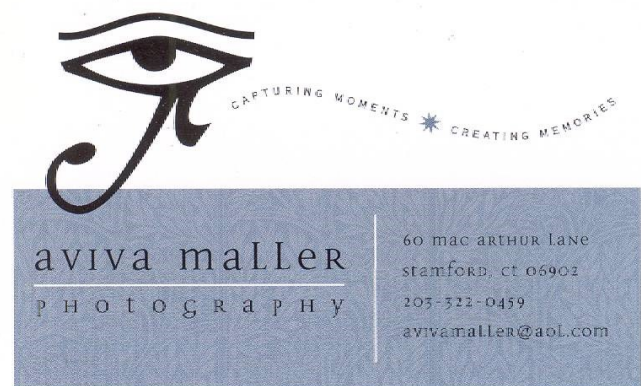
[IJTurshen@aol.com](mailto:IJTurshen@aol.com)



A Full Service Production Company:

- Event Decor
- Event Management
- Live Sound
- Video and Photography
- Rigging and Staging
- Webcasting
- Lighting
- Non-Profit Events
- Trade Shows and Product Launches
- A/V Equipment Rental
- Drone Imagery Services

25 Viaduct Road Stamford, CT 06907 P: (203) 517-4688  
[www.kpeventsgroup.com](http://www.kpeventsgroup.com)



aviva maller  
PHOTOGRAPHY

60 mac ARTHUR Lane  
STAMFORD, CT 06902  
203-322-0459  
[avivamaller@aol.com](mailto:avivamaller@aol.com)

Check out our special website  
Dedicated to TBE's event space

[www.thebigeventspace.com](http://www.thebigeventspace.com)

Please let your friends and business associates know how we can fulfill their celebratory and meeting needs.

**ART GREENWALD**

President

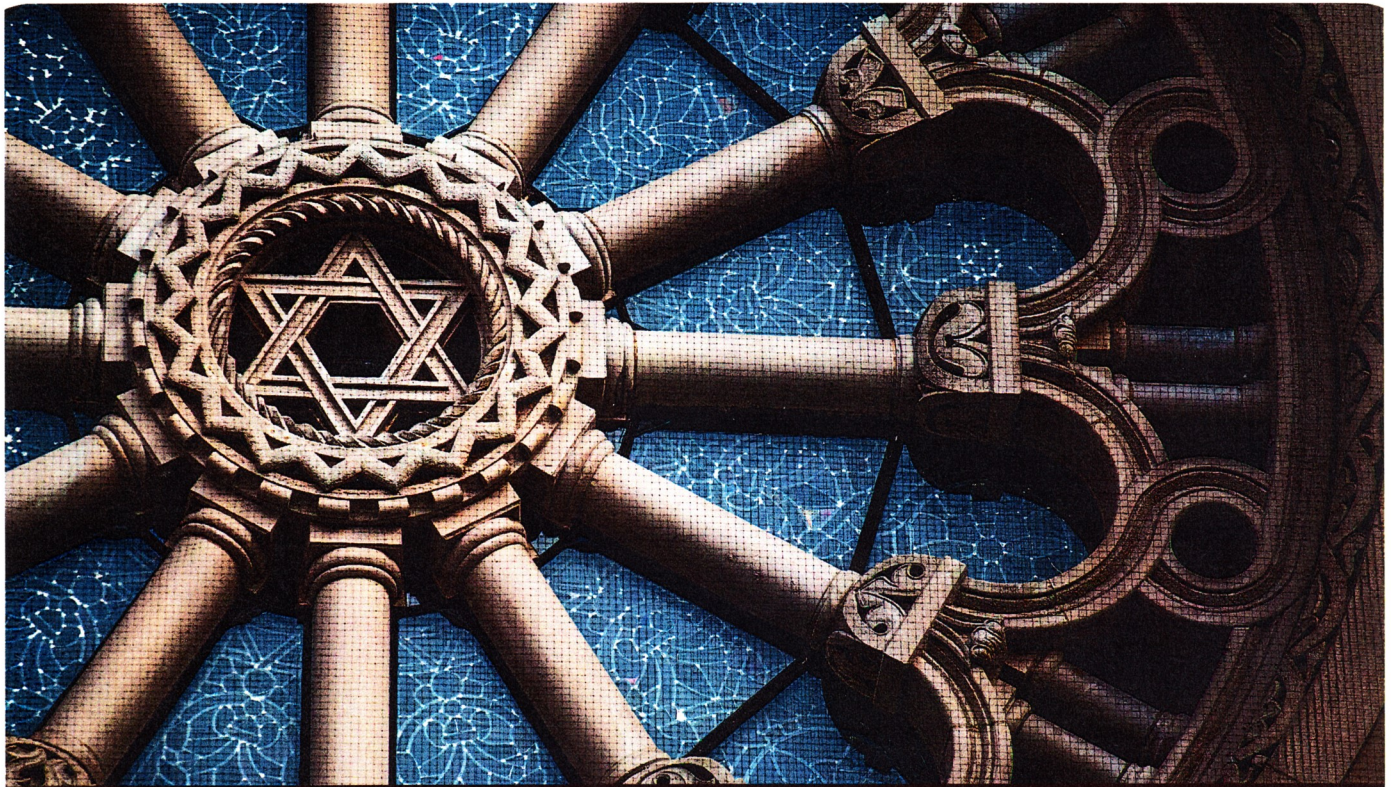
**INTEGRATED PROTECTION SERVICES, LLC**  
320 Boston Post Road, Suite 140 DARIEN, CT 06820  
Tel: 203.322.0772

[WWW.INTEGRATEDPROTECTIONSERVICES.COM](http://WWW.INTEGRATEDPROTECTIONSERVICES.COM)

**SYSTEMS AND SERVICES FOR SECURITY  
AND FIRE PROTECTION**  
SERVING CONNECTICUT AND NEW YORK  
COMMERCIAL AND RESIDENTIAL







TAKING CARE OF EACH OTHER  
*is what community is all about.*

**WE'RE PROUD TO SERVE** our community with personal, compassionate care.  
As your Dignity Memorial® professionals, we're dedicated to helping families create  
a unique and meaningful tribute that truly honors the heritage of the Jewish faith.

*We invite you to contact us today to learn more.*

Dignity®  
MEMORIAL

✧ LIFE WELL CELEBRATED™ ✧

**LEO P. GALLAGHER & SON**

FUNERAL HOME

STAMFORD

203-327-1313 [LeoPGallagherStamford.com](http://LeoPGallagherStamford.com)