

Temple Beth El Bulletin

A Conservative, Inclusive, Spiritual Community

www.tbe.org

Volume 48 Issue 2 (bi-monthly)

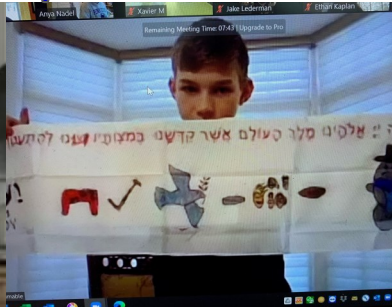
March-April 2021

Adar/Nisan/Iyar 5781

Bird Feeders created by Religious School students for Tu B'Shevat



World Wide Wrap and Tallit Created by Our Youth



Embracing our past, securing our future Campaign for Temple Beth El



100
TEMPLE BETH EL
CELEBRATING OUR FIRST 100 YEARS

TEMPLE BETH EL - BOARD OF TRUSTEES**EXECUTIVE COMMITTEE**

Lisa Manheim, President	917-690-2712
Carl R. Weinberg, Immediate Past President	203-322-8675
Scott Krowitz, First Vice President	917-902-1447
Stan Friedman, Vice President	203-322-0416
Dana Horowitz, Vice President	203-321-0018
Devra Jaffe-Berkowitz, Vice President	203-978-1113
Arthur Laichtman, Vice President	203-461-8223
Christopher Maroc, Vice President	914-215-2025
Lael Shapiro, Vice President	203-273-8380
Daniel Young, Vice President	203-975-1990
Robert S. Cohen, Treasurer	203-329-9622
Emily Klein, Secretary	347-901-0228

ADVISORS

Steven Sosnick	203-219-0270
Mia M. Weinstein	203-595-0528

TRUSTEES

David Amsellem	203-832-4335
Lori Bushell	203-962-2974
Jeffrey Cohen	203-358-9911
Kahla Cooper	203-554-7888
Aron Davidson	203-274-6363
Jon Eisenstein	203-321-8369
Leslie Glenn	203-273-7215
Susan Greenwald	203-322-0771
Michael Handel	203-981-1987
Julie Rosenberg	203-975-8880
Irma Ross	203-246-4880
Barbara Rothstein	203-614-8053
Judy Schneiderman	203-569-4969
I. Jeffrey Turshen	203-323-3872

SISTERHOOD PRESIDENT

Karen Resnick	203-536-3115
---------------	--------------

MEN'S CLUB PRESIDENT

Josh Levine	203-276-4935
-------------	--------------

PAST PRESIDENTS

Gordon Brown	203-276-8688
Rosalea Fisher	203-323-1449
Fred S. Golove	203-322-0295
Herbert Kahan	203-595-9981
Alan Kalter	203-322-8220
Peter K. Kempner	203-968-8079
Mark Lapine	203-329-9879
Gary P. Lessen	203-322-7617
Sylvan D. Pomerantz	203-968-0605
Brian Rogol	212-531-8203
Eileen H. Rosner	203-461-0506
Mia M. Weinstein	203-595-0528

WHERE TO FIND IT

Joshua Hammerman, Rabbi.....	Page 3
Katie Kaplan, Cantorial Soloist.....	Page 3
Sidney Rabinowitz, Hazzan Emeritus.....	Page 4
March-April Service Schedule	Page 5
B'nai Mitzvah.....	Page 6
Adult Education	Page 6
TBE Clubs.....	Page 7
Sisterhood	Page 11
Beth El Cares	Page 13

COMMITTEE CHAIRPERSONS**Board of Education**

Kahla Cooper.....	203-554-7888
-------------------	--------------

Empty Nesters

Sue and Carl Shapiro	203-353-0657
----------------------------	--------------

Facilities

Lael Shapiro.....	203-273-8380
-------------------	--------------

Finance

Robert S. Cohen	203-329-9622
Susan Frieden.....	203-869-4282

Fund Raising

Arthur Laichtman	203-461-8223
------------------------	--------------

High Holy Days Task Force

Devra Jaffe-Berkowitz	203-978-1113
-----------------------------	--------------

High Holy Days Food Drive

Sharon Turshen.....	203-323-3872
---------------------	--------------

Human Resources

Carl Weinberg	203-322-8675
---------------------	--------------

Marketing and Communications

Stan Friedman.....	203-322-0416
--------------------	--------------

Membership Committee

Chris Maroc.....	914-215-2025
------------------	--------------

Mitzvah Garden

Harriet Weinstein.....	203-353-8873
------------------------	--------------

Project Ezra

Joy Katz	203-329-3359
----------------	--------------

Reyut Committee

Melanie Massell	203-324-7190
-----------------------	--------------

Ritual Committee

Devra Jaffe-Berkowitz	203-978-1113
-----------------------------	--------------

Social Action Committee

Dana Horowitz	203-321-0018
---------------------	--------------

Tzedek Committee

Julie Rosenberg.....	203-975-8880
----------------------	--------------

Immigration Task Force

Belle Horwitz.....	203-968-1296
--------------------	--------------

OUR STAFF IS MOST EAGER TO ASSIST YOU

Monday - Thursday, 9am - 5:00 pm | Friday, 9am - 2:00pm

Phone: 203-322-6901 Fax: 203-322-0532

Joshua Hammerman, Rabbi (rabbi@tbe.org)	ext. 307
Katie Kaplan, Cantorial Soloist (cantor@tbe.org)	ext. 315
Sidney G. Rabinowitz, Hazzan Emeritus (hazzan@tbe.org)	ext. 309
Steven Lander, Executive Director (execdir@tbe.org)	ext. 304
Lisa Gittelman Udi, Director of Congregational Learning (eddir@tbe.org)	ext. 305
Rabbi Gerry Ginsburg, Associate Rabbi (rabbiginsburg@tbe.org)	ext. 300
Jami Fener, Engagement Coordinator (engagement@tbe.org)	917-680-9413
Beth Silver, Religious School & Campaign Administrative Assistant (education@tbe.org campaign@tbe.org)	ext. 306
Linda Rezak, Bookkeeper (lindar@tbe.org)	ext. 302
Mindy Rogoff, Temple Secretary (office@tbe.org)	ext. 301
Beth Silver, Secretary (adminassist@tbe.org)	ext. 308
Alberto Eyzaguirre, Facilities Manager (maint@tbe.org)	ext. 314

ON ONE FOOT

The Season of our Liberation

Rarely before in our lives has the festival of Passover been so well-timed. If all goes well – and that’s a big “if” – as we mark the liberation of our people from Egyptian slavery, we’ll begin to liberate ourselves from the quarantine of Covid, not to mention the wicked winter we’ve just endured. At long last we will begin to inch toward normalcy, or at least what now passes for it. Here at TBE, we’ll hopefully be able to begin taking baby steps back into our indoor and outdoor prayer venues, while still Zoom-casting most events for those who remain home-bound.

While the precise timing of this modern-day exodus is far from certain, what is certain is this: None of this would be possible without the vaccines, which are a modern miracle, biblical in scope. The partnership of science, faith and pure doggedness, made possible by the unlikely partnership of national and corporate rivals, enabled this miracle to occur in record time.

I had my second shot a few weeks ago. It seemed almost anti-climactic. That week at services I reflected on what blessing would be most appropriate to say at the big moment, because there is a blessing for everything – if there is a blessing for the Czar than there has to be a blessing for SARS.

It seemed to me that *Shehechianu* was the way to go – it reflected the once in a lifetime aspect of this moment, the triumph of life over death and the resuscitation of our entire society. Plus, it was short and hey, there were people behind me and I could just see them starting to *kvetch* as I pulled out a page from my pocket and started to recite something longer.

There are lots of options. For those who will be taking the vaccine this month, and I assume that will be many of you, I sent a number of them out (see them at <https://www.joshuahammerman.com/2021/02/in-this-moment-ribeye-hammerman-vaccine.html>)

Then, once you’ve chosen the blessing, there is the question as to when is the right time to recite this blessing. Here are some options:

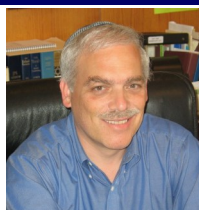
- (1) When the vaccine begins being distributed in our area (already happened)
- (2) When people have been using it for a few months, and its efficacy has been clearly demonstrated
- (3) When you, personally, receive it
- (4) When you receive the second shot or
- (5) When the scientists say that we have achieved herd immunity.

When does the miracle take place? At the beginning or the end? Was the miracle of the Exodus the execution of the first plague, the blood in the Nile? Or was it the crossing of the Red Sea, the final plague? Was it consummated when each individual Israelite emerged from the Red Sea – for that individual – or was the miracle complete only when the entire nation had emerged from bondage?

When should a blessing be said?

Is a personal healing the same as a national one? We

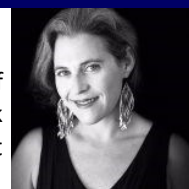
Continued on page 17...



KATIE KAPLAN, CANTORIAL SOLOIST

Spring with Nefesh Mountain

Wrapping my hands around a hot mug of tea, sitting by the firepit, and singing folk tunes are some of my favorite moments that wake me from the cold haze of winter.



As the snow melts, there is so much to look forward to with warmer temperatures on the horizon, the chance to spend more time outside, and the hope that we will begin to safely come together again as a community.

Among the upcoming highlights of the spring, I’m thrilled to share that we will be virtually hosting Nefesh Mountain for the annual Cantor’s Concert on Sunday, May 2nd. Nefesh Mountain is the place where Bluegrass, Old-Time, and American Roots music meet with Jewish heritage and tradition. Creators, band leaders, and husband and wife team Doni Zasloff and Eric Lindberg are the heart of this eclectic offering, pioneering a new world of American culture which seamlessly blends their deep love for American and Western musical forms with their own cultural backgrounds as Jewish Americans. With their dynamic music, sweet harmonies, and engaging performances, they are certain to awaken the warmth of spring and atune us to new beginnings and the bright future.

While celebrating Lag B’Omer, honoring our beloved Alberto Eyzaguirre, and gathering in the warmth of our community, we will elevate the music and stories that create the fabric of our lives. I’m excited to introduce the congregation to this duo at the heart of Nefesh Mountain along with their music, which feels like a warm bath for the soul.

Stay tuned for more information and I hope you will save the date to join us for this delightful evening of music, warmth, and celebration on Sunday, May 2nd!

Katie Kaplan

Annual Cantor's Concert Nefesh Mountain



Nefesh Mountain has been featured in Rolling Stone, BBC World News, Billboard, The Bluegrass Situation, No Depression, Bluegrass Today, Bluegrass Unlimited, The Times Of Israel, Jerusalem Post, and Tablet Magazine among others.



SHABABIMBAM

A Shabbat program for families with children 5 and younger
(older siblings welcome)

Saturday Mornings

Led by NATASHA FENSTER & STEVE EPSTEIN



Join us at 11:00 am on Zoom
for a warm family Shabbat experience!

<https://zoom.us/j/93618704145>

Meeting ID: 936 1870 4145

2020-2021 Dates

September 12

October 17

November 14

December 5

January 9

February 20

March 20

April 10

May 8

June 5

Questions? Contact Jami Fener youngfamilies@tbe.org
Temple Beth El, 350 Roxbury Rd., Stamford, CT 203-322-6901

Like facebook.com/youngfamiliesTBE



MEN'S CLUB

WE'RE ALL
IN THIS
Together



TBE MEN'S CLUB SPONSORS

BLOOD DRIVE

Wednesday, March 17, 2021

11:00am - 4:00pm

www.redcrossblood.org/give.html/donation-time

Tuesday, April 13, 2021

11:00am - 4:00pm

STAGE "2"

"Velvel Pasternak and Dealing with Hasidim"



In 1962, Velvel was asked to arrange and conduct a chorus of Lubavitch Hasidim for the first in a series of Chabad recordings. Rabbi Shmuel Zalmanoff was appointed music consultant for this recording. He selected the songs and chose the Lubavitch Hasidim who were to sing in the chorus. This was the "handpicked chorus" Velvel would train and record.

At Velvel's first meeting, a copy of Sefer Hanigunim was given to him and was asked to play while the group sang through the program of melodies to be recorded. Because these Hasidim sang so many of these songs differently from the printed musical transcriptions, Velvel needed to rewrite most of the nigunim. After the printed nigunim were corrected, Velvel arranged them with simple harmonies.

At the first rehearsal, Velvel was forced to quickly address an interesting problem. The forthright instruction that the chorus must begin and end together was met with very quizzical looks. "Hasidim always begin and end together," they objected.

It took Velvel a little time to realize that the members of his chorus did most of their singing during special, Hasidic gatherings which took place several times a year at Lubavitch headquarters. The format of a Lubavitch gathering was always the same. Hundreds of Hasidim gather in the headquarters to listen to Rabbi Menachem Mendel Schneerson, z'l. A designated Hasid took his cue from the Rebbe to begin a nigun that was taken up by all assembled.

For a young conductor to inform these singers that they needed to start and end together served only to insult them. It was a small victory when they finally agreed with Velvel.

After several months of weekly rehearsals during which they sang legato, and produce some elementary shadings of tone, Velvel found that none of the Hasidim were able to sing the harmonies. This was not due to their level of difficulty, but for the Hasidim to concentrate on anything but the melody seemed almost impossible. With permission, Velvel hired three professionals to sing the harmonies. After several months and when Velvel felt that the group had gone as far as they could go musically, a recording date was scheduled.

Velvel was told that the recording session must take place either on a Monday evening, after dark, or on Tuesday before dark. This was keeping among traditional Jews that Tuesday, the third day of the week, is a day of mazal. For this reason, the Lubavitch Hasidim requested their first recording session be on Tuesday. The producers promised that they would schedule a recording studio and an engineer for a "Jewish" Tuesday. A studio was booked for a Monday night in early spring, and the final recording date was announced on the Saturday night before the recording, to gather a mini-farbrenge. Velvel was told that as Hasidim performing a task for Lubavitch, they needed an evening of good fellowship to wish each other good luck with the recording. Dutifully, the producers and Velvel arrived at the home of one of the singers

Continued on page 16...



SHABBAT AND FESTIVAL SERVICES



MARCH

Friday, March 5

Kabbalat Shabbat 6:00pm

Shabbat, March 6

Shabbat Service 10:00am

Friday, March 12

Kabbalat Shabbat 6:00pm

Shabbat, March 13

Shabbat Service 10:00am

Friday, March 19

Kabbalat Shabbat 6:00pm

Shabbat, March 20

Shabbat Service 10:00am

ShaBaBimBam 11:00am

Friday, March 26

Kabbalat Shabbat 6:00pm

Shabbat, March 27 - Erev Passover

Shabbat HaGadol Service 10:00am

First Seder

Sunday, March 28 - Passover, day 1

Passover Service 10:00am

Second Seder on Zoom 7:00pm

(see below)

Monday, March 29 - Passover, day 2

Passover Service 10:00am

APRIL

Friday, April 2

Kabbalat Shabbat 6:00pm

Shabbat, April 3 - Passover, day 7

Shabbat/Passover Service 10:00am

Sunday, April 4 - Passover, day 8

Passover Service 10:00am

Friday, April 9

Kabbalat Shabbat 6:00pm

Outdoors,* Socially Distant and on Zoom

(*weather permitting)

Shabbat, April 10

Shabbat Service 10:00am

ShaBaBimBam 11:00am

Friday, April 16

Kabbalat Shabbat 6:00pm

Shabbat, April 17

Shabbat Service 10:00am

LIAM RAZ, BAR MITZVAH

Friday, April 23

Kabbalat Shabbat 6:00pm

Shabbat, April 24

Shabbat Service 10:00am

SARAH STROM, BAT MITZVAH

Friday, April 30

Kabbalat Shabbat 6:00pm

All services will be held on Zoom.

Passover Second Seder

Sunday, March 28, 2021 at 7:00 pm
on Zoom

Led by Rabbi Joshua Hammerman
and Katie Kaplan, Cantorial Soloist

Free and open to the public

Registration required for Zoom link - Details to follow
[Click here](#) for the Haggadah

To order food go to:
SISTERHOOD ANNUAL PASSOVER
FOOD SALE
www.tinyurl.com/sederfood



Annual Cantor's Concert

Sunday, May 2, 2021

on Zoom

Featuring

**Nefesh
Mountain**



Details to follow...

B'NAI MITZVAH

LIAM RAZ

April 17

Son of Rebekah and Liran

Brother of Annabelle and Shailee

Attends Bi-Cultural Hebrew Academy

Mitzvah Project: collecting toiletries to
for children residing in Inspirica



SARAH STROM

April 24

Daughter of Lisa and Eric

Attends Bi-Cultural Hebrew Academy

Mitzvah Project: Emmet's Playground
and Kids Helping Kids



Mazal Tov!

MAZAL TOV TO...

*Hazzan Sidney Rabinowitz on the birth of three new
great-grandchildren bringing his total to six: Orli Shir,
Ilana Arielle and Shayna Gitel.*

*Barbara Aronica on the marriage of her son, David, to
Andree Ciccarelli.*

*Lois Stark and Gary Lessen on the birth of a
granddaughter, Ruby Harlowe, born to Stacy Lessen
and Gregg Arenson.*

*Carol and Wil Brewer on the birth of a granddaughter,
Sophia Charlotte Ellen, born to Laura and Keith Brewer.*

*Melanie Kieval on the birth of a grandson, Ethan
Kingsley, born to Emily Kinglsey-Ma and Zachary
Harding.*

*Amy and Bill Miller on the birth of a granddaughter,
Camryn Paige, born to Stacie and Brandon Espinosa*

*Kathy Mandel on the birth of a granddaughter, Georgia
Rose, born to Kira Terrison and Josh Mandel.*

*Catherine L. Reed on being named the Chief Executive
Officer of American Friends of Magen David Adom.*



Share your family's simcha (engagement, marriage, birth,
Bar or Bat Mitzvah of a child or grandchild) and other joyous
event. Just contact the TBE office at office@tbe.org or 203-
322-6901, ext. 301.

ADULT EDUCATION

PRE-PASSOVER STUDY with Rabbi Gerry Ginsburg

Monday, March 1, 8, 15 and 22 at 1:30 p.m.



Join Rabbi Gerry Ginsburg on Zoom for
"Passover, the Haggadah, and the Talmud -- Give Your Seder
New Meaning." The course will be based upon parts of
tractate Pesachim. How was the Seder originally
envisioned? How has it changed over the centuries? All
materials will be provided (online). No past study of Talmud
or knowledge of Hebrew is required.

(Zoom link available in the Shabbat Announcements)

MEDITATION AND GUIDED IMAGERY with

Katie Kaplan, Cantorial Soloist

Tuesday, March 16 and April 20 at 7:00pm



Join us as we use breath, chant, and visualization to carve
out a moment of peace in our lives.

(Zoom link available in the Shabbat Announcements)

TBE SINGERS - A GATHERING with KATIE KAPLAN, CANTORIAL SOLOIST

Wednesday, March 24 at 7:30pm



Do you love to sing?

Maybe you are in the TBE CHOIR or considering joining?

Or, you just miss harmonizing and making music together?

Join Cantorial Soloist, Katie Kaplan on ZOOM as she
reawakens our minds, bodies, and voices in this interactive
and engaging vocal session. She will guide participants
through a series of breath/vocal warm-ups focusing on
technique, talk choir shop, and teach participants new
melodies for services.

Interested? Contact Mindy at office@tbe.org

HONORABLE MENSCHEN TODAH RABAH TO OUR TORAH READERS!

RABBI GERRY GINSBURG ☆ JOSH LEVINE
BERT MADWED ☆ JULIE ROSENBERG SUSAN
SCHNEIDERMAN ☆ MARGARET SHAMEER
MERYL SILVERSTEIN

INTRODUCING TBE CLUBS

TBE Clubs is a TBE initiative that engages small groups of congregants in meaningful social, learning, and physical activities that fuel the body and inspire the soul. Equally important, TBE Clubs act as a way by which congregants can pursue their passions and find new friends within the synagogue community.



Here is a current list of available clubs, which can also be found on the TBE website at: <https://www.tbe.org/tbe-clubs/>. TBE members interested in joining a club should reach out to the club's point person for more information. A TBE Clubs Open House was held over Zoom on January 13, with each Club's Point Person speaking about his/her club. If you missed it, here is a link to the video: <https://www.youtube.com/watch?v=WkBVotQwTdl&feature=youtu.be>.

If you have any questions or have an idea to start your own club, contact Jami Fener at engagement@tbe.org.

TBE MUSICIANS & SINGERS

This intergenerational club will bring together musicians and singers of all ages and experience levels to participate and hopefully perform at the synagogue when the COVID pandemic is behind us. The theme of this group is "Jews that Rock," performing material by Jewish artists, such as Carol King and Billy Joel. The point person, Paul, is a drummer, so he is looking for a bass, guitar, and keyboard player to create the core band. Other club members are invited to sing and/or rotate through different instruments.

Point Person: Paul Weinstein at drpaulweinstein@gmail.com or 203-219-4191.

HEART-TO-HEART

This group is focused on providing support for those dealing with or suffering from grief and loss. We will offer a safe space for listening and sharing and provide tools to help members move through difficult situations and feelings. The group's intention is to guide members in reclaiming their light inside. Heart-to-Heart will meet over Zoom for now, twice-a-month, every other Wednesday at 7:00 pm.

Point Person: Hope Stanger HHC, Trauma Therapist and Holistic Health Counselor, at theholisticempire@yahoo.com or 203-357-0242; or **Pamela Tinkham LCSW, Trauma Therapist and Yoga Therapist**, at pamelatinkham@gmail.com.

EASY RIDERS CYCLING CLUB

The club focuses on cyclists who enjoy longer rides (approximately 20 miles per trip). We are a kinder, gentler road cycle club that caters to all levels and people who seek to ride the beautiful backroads of our area. We will also be making short trips to visit the various rail/trails (absolutely flat) in upstate Connecticut and Westchester County. We plan to ride together twice-a-month when the weather warms up in the spring.

Point Person: Elissa Garber-Hyman at ehyman@optonline.net or 203-979-0294.

BROADWAY AND MOVIES REVISITED

Join other theatre and film lovers to watch movie versions of Broadway shows, as well as films of the past and present. We will compare and discuss shows beyond entertainment value, including their messages as reflections of society, history, and culture. The club will meet monthly over Zoom for the time being.

Point Person: Barbara Rothstein at brothstein320@gmail.com or 203-614-8053; **Carl Shapiro** at cshapiro@optonline.net or 203-273-1968.

HIKING AND WALKING CLUB

Club members will explore the beautiful venues and trails that are within a one-hour drive of TBE. Members will choose the hikes/walks in which they are interested, considering length, elevation and level. Meetings will take place by Zoom, with hikes and walks in-person.

Point Person: Leslie Heyison at lheyison@gmail.com or 646-354-3950.

TBE STEMers

For those interested in learning and teaching others in the field of science, this is the club for you. We will discuss Jewish topics of interest, such as medical and research ethics, as well as present on individual areas in which we specialize. Meetings will take place monthly over Zoom for now. On occasion, we will also organize lectures and speakers for the congregation.

Point Person: Fran Ginsburg at ginsstamf@gmail.com or 203-979-9570.

NEW CLUB: Introducing the MITZVAH GARDEN CLUB!

This Club will provide members the opportunity to plant and grow their own vegetables and/or flowers in our very special TBE Mitzvah Garden. Members will meet individually or as a family and each would be able to plant and care for their own bed(s) with the produce/flowers of their choosing. Look for additional details coming soon!

Special Occasion?

Sponsor The Shabbat E-announcements
(sent every week via e-mail)

The Shabbat Announcements
(distributed each Shabbat at the Temple)
and the Shabbat-O-Gram
(e-mailed every Thursday night)

All three publications for \$72

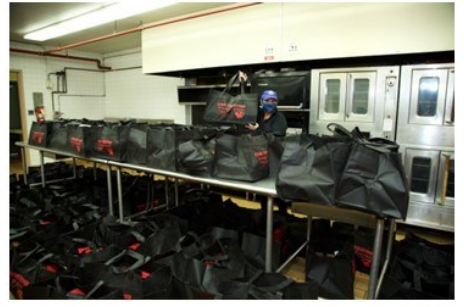
All sponsors will be acknowledged at the beginning of each of these announcements and also listed in our bi-monthly Bulletin.

Call Mindy in the office at 322-6901 ext. 301.

PHOTOS BY AVIVA MALLER PHOTOGRAPHY



PHOTOS BY AVIVA MALLER PHOTOGRAPHY



TBE CELEBRATES THE LOWER EAST SIDE NYC JEWISH COMMUNITY



Thursday, March 18, 5:00pm TENEMENT MUSEUM VIRTUAL VISIT!

We will visit the reconstructed home and learn about the life of a Jewish family in the early part of the 20th Century.

Thursday, March 18, 3:00-5:00pm BEN'S KOSHER DELI pick-up

Order your deli items by March 16, at 5:00pm:
www.tinyurl.com/tbebens

Seventh and eighth grade age students attend free and receive a complimentary deli sandwich!

Seventh and eighth grade students and families please register here: www.tinyurl.com/tbe7-8grades

All others who wish to participate - Fee \$10 per device
Please register here: www.tinyurl.com/tbeeastside

Friday, March 19, 6:00pm A TRIBUTE TO JOAN MICKLIN SILVER

This will take place as part of our Friday Evening Kabbalat Shabbat Service. Joan Micklin Silver directed the films "Hester Street" and "Crossing Delancey." Both films portrayed Jewish life on the Lower East Side.

For the Zoom link information for this service, please see the weekly Shabbat Announcements or email office@tbe.org.

*Many thanks to the Mann Family Foundation
for helping to make this event possible.*

TEMPLE BETH EL and UNION BAPTIST CHURCH of STAMFORD proudly present



RICHARD BLUMENTHAL UNITED STATES SENATOR *for* CONNECTICUT

TUESDAY APRIL 6
7:00 PM

TBE Zoom Town Hall Meeting
with Senator Richard Blumenthal

Fellow TBE member and Connecticut's Senior Senator
Richard Blumenthal will speak about
the most pressing issues facing our community
and will answer your questions.

Register at: www.tinyurl.com/tbe-040621
Zoom info will be sent at registration.

Co-sponsored by: AJC and the Stamford NAACP

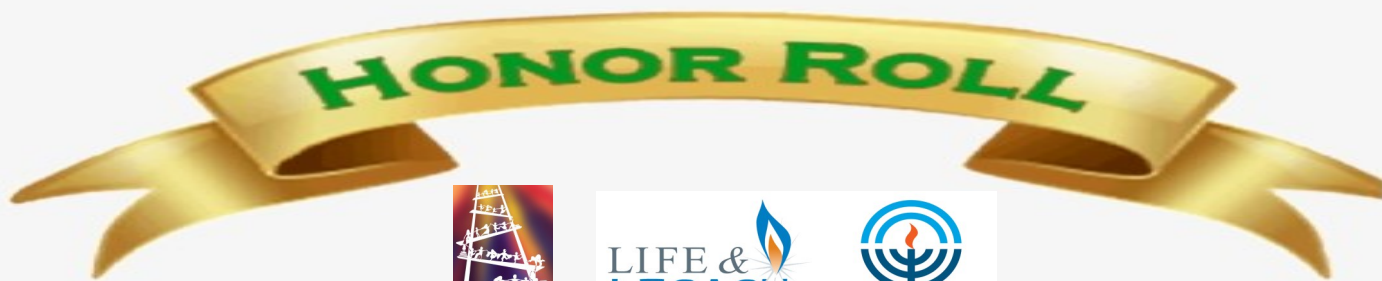
TBE brings you
A Taste of Shabbat from
Zadies Bake Shop
of Fairlawn, NJ

Zadies
BAKE SHOP

Go to www.tinyurl.com/tbezadies3-18 and place your
order by Monday, March 15 at 10am.

Curbside pickup in TBE's parking lot will be on
Thursday, March 18 from 2-5pm.

TEMPLE BETH EL'S LIFE & LEGACY



Anonymous (2)
Jeff Cohen and Malerie Yolen-Cohen
Keith and Rachel Friedman
Leslie Glenn
Richard Heimler, z'l
Alan and Sari Jaffe
Devra Jaffe-Berkowitz and Parry Berkowitz
Joy Katz

Larry Katz
Betsy and Peter Kempner
Elizabeth and Scott Krowitz
Lieba and Steven Lander
Gary Lessen and Lois Stark
Jeffrey and Lisa Manheim
Chris Maroc
Melanie Massell

Drs. Jeffrey Perry and Robin Evans
Caryl and Peter Poser
Irma Ross
Jim and Sally Rothkopf
Miriam and Steven Sosnick
Gail G. and Stephen Trell
Carl and Dana Weinberg
Dan and Sheryl Young

THANK YOU TO ALL OUR LEGACY DONORS PLEASE JOIN THEM!

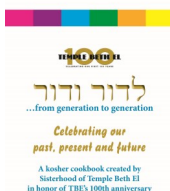
Call Steven Lander, 203-322-6901, ext. 304 or e-mail execdir@tbe.org



Our 2021 Spring events are in full swing with your \$36.00 Sisterhood dues hard at work! Check out our upcoming events!

Sisterhood Cookbook! Free copy to member families!

Sisterhood has created a beautiful cookbook full of delicious recipes from our members and friends. Sisterhood is delighted to offer each member family one cookbook, free-of-charge, as our gift to you for a limited time. Additional copies are \$6 each (sold at cost). Questions: contact **Beth Silver** at beth@silverconsulting.net. **For a free copy and purchase of additional copies, you must pre-order at www.tinyurl.com/cookbook100.**



Celebrate Women's History Month – March 2 at 7:30 p.m.

Engage in an exciting and educational dialogue about prominent Jewish women heroes. Learn about their triumphs and challenges. Naomi Sobel Marks, TBE and Sisterhood Member, will lead our discussion. All are welcome!

Sisterhood Shabbat – Shabbat, May 15 at 10:00 a.m.

We are in the planning stages of TBE Sisterhood's 2021 Shabbat morning service, led entirely by women! Women of all ages are invited to "take a part." Would you like to read Torah, lead Ashrei, a Hebrew prayer, or an English reading? Multi-generational families (female only, please) and teens enrich our service. Contact **Leslie Heyison** at lheyison@gmail.com or 203-964-9386 with your preferences and questions.

All events are on Zoom. Please check the weekly Shabbat Announcements for event details.

We had a very busy February and would like to thank **Dora Salm** for her wonderful leadership and discussion of the book, *Caste*. We were thrilled to partner with Tzedek Committee chair, **Julie Rosenberg**. Over 40 people attended this congressional book read about caste systems that continue to shape American lives. Also, thanks to **Darby Cartun**, a radio talk show host and passionate lover of the arts, for an enjoyable morning of interactive discussion about the artist, Marc Chagall.

Please read upcoming Shabbat announcements regarding Sisterhood's yearly Passover food sales.

Barbara Berman is leaving the Sisterhood Board to begin new endeavors, and we are excited for her! Barbara ran the Sisterhood Gift Shop for many, many years and did a phenomenal job including running to TBE at a moment's notice. Barbara will continue to be involved at TBE and we will miss her.

I would like to thank our board, **Donna, Dora, Naomi, Paula, Judy**, and **Juli** for their thoughts and ideas on creating new events.

Please continue to contact us with your programming ideas and questions at sisterhood@tbe.org.

We are always looking for new board members. We would love to have you join us or just attend one of our meetings to find out what we are about!

On behalf of Sisterhood, stay safe.

Karen Resnick

**PASSOVER FOOD BROUGHT TO YOU
BY TBE SISTERHOOD**

Online orders only. Go to www.tinyurl.com/sederfood

Order by March 17 at noon

Curbside pickup at TBE on March 25 from 1-4pm

Prepared for you by W Kosher Events

Questions: Contact Judy Schneiderman at 203-569-4969

or judy2125@optimum.net



**A RECIPE FOR YOU FROM
SISTERHOOD'S NEW COOKBOOK**

Judy Schneiderman

Chocolate Mandel Bread

2 cups sugar
½ lb. margarine
6 eggs
2¾ cups matzo cake meal
½ tsp. salt

¾ cup potato starch
1 cup semi-sweet chocolate chips
1 cup chopped walnuts
1 tsp. cinnamon mixed with 2 tsp. sugar

Preheat oven to 350°. Grease cookie sheet. Cream together sugar and margarine with an electric mixer. Add eggs one at a time, beating after each addition. Sift together cake meal, salt, and potato starch and fold into creamed mixture. Add chocolate and nuts. Mix well. Form into 3 12-in. flattened loaves and place on cookie sheet. Sprinkle with cinnamon/sugar mixture. Bake for 45 min. Slice while warm into ½" slices. Number of servings: 36 pieces; Preparation time: 20 min. plus baking

Please contact Sisterhood at sisterhood@tbe.org or feel free to call/email a Sisterhood board member with any comments. We love hearing from you and are always looking for volunteers!

Karen Resnick, President

203-536-3115, kmr925@sbcglobal.net

Judy Schneiderman, Treasurer

203-569-4969, jrs2125@optonline.net

Dora Salm, Secretary

203-461-8596, d_salm@yahoo.com

Juli Harris, Board Member

203-276-0589, jaharris99@aol.com

Naomi Sobel Marks, Board Member

203-273-4650, nsobel@hotmail.com

Paula Shulman, Board Member

203-461-9396, paulashulman51@gmail.com

Donna Wolff, Board Member

917-601-1878, donna@wolffmedco.com



We are delighted to announce that the Campaign for Temple Beth El has been the most successful fundraiser in the history of Temple Beth El. Over 180 of your fellow congregants have pledged almost \$3.1 million.

As a result of their generosity, TBE's endowment will start with a principal of more than \$2 million, and we will have about \$1 million to invest in major capital projects. The endowment – which will continue to grow each year – will help to ensure TBE's financial future for decades to come. We have also already begun construction on major capital projects including the elevator, the downstairs lobby entrance, and completely renovated downstairs bathrooms.

We will be closing the Campaign to new donors effective March 31. We know that you understand the vital role that TBE plays in the greater Stamford Jewish community and in our broader local community. Before the Campaign ends on March 31, please join your fellow congregants in ensuring TBE's future by making a Campaign pledge.

When TBE reopens, the enclosed list of Campaign supporters will be displayed prominently in the building. If you would like to add your name to the list, please contact Steven Lander, execdir@tbe.org or call him at 203-322-6901, ext. 304.

\$100,000+

Anonymous (1)
Stephne & Kerrin Behrend
Sue Frieden
The Horowitz Family
Elissa Garber-Hyman & James Hyman
Sari & Alan Jaffe
Betsy & Peter Kempner
Lois Stark & Gary Lessen
Lisa & Michael Rome
Betsey & Arthur Selkowitz /
Selkowitz Family Foundation
Miriam & Steven Sosnick
Dana & Carl Weinberg

\$25,000 – \$99,999

Anonymous (1)
Bonnie Kintzer & Eric Baker
Devra Jaffe-Berkowitz & Parry Berkowitz
Barbara & Edward Berman
Senator Richard & Cynthia M. Blumenthal
Lynn Villency Cohen & Stephen A. Cohen
Malerie Yolen-Cohen & Jeffrey Cohen
Judy Dalgin Suchin & Norman Suchin
Helen & Martin Donner
Frances & Gerry Ginsburg
Sondra & Leo Gold
Denise & David Greenman
Phyllis & George Heller
Beverly & Allen Kezsbom
Liz & Scott Krowitz
Christopher Maroc & Richard Heimler, z'l
Melanie Massell*
Jill & Mitchell Nadel
Dorothy Levine & Alvin Rosenfeld
Linda & Joe Rothman
Marsha Kaiser Shendell
Sharon & Jeff Turshen
The Wise Family
Sheryl & Daniel Young

\$15,000 - \$24,999

Anonymous (1)
Nancy & Brad Benjamin
Joanne & Marshall Goldberg
Leslie & Joseph Heyison
Ellen & Arthur Laichtman
Debbie & Stanley Lee
Ellen & Joel Mellis
Cynthia & Stan Miller
The Pearce Family— Lynn & Alan Pearce,
Nancy & Jeff Herz, Carin & Greg Kalt
Jerry Rose, z'l
Miriam & Michael Schechter
Susan & Carl Shapiro

\$5,000 - \$14,999

Anonymous (6)
David Amsellem
Barbara & Warren Brandt
Carol & Wil Brewer
Melissa & Kenneth Broder
Marsha Colten & Robert Cohen
The Ditesheim Family
Bobbe & Ben Evans
Carolyn Nadel and Philip Farin
Barbara & Stanley Friedman
Heidi & Harrison Ganz
Lori & Raph Gilbert
Leslie Glenn
Phyllis R. Gofstein
Loralee & Philip Granowitz
Myra & John Graubard
Susan & Art Greenwald
Nancy & Jerry Kapchan
Debra Adler-Klein & Matthew Klein, z'l
Carol & Allen Krim
Ruth Kwartin
Roni & Allan Lang
Rivka & Daniel Lieber
Jennifer & Harris Meth
Roslyn & Merritt Nesin
Suzanne & Craig Olin
Honni & Sylvan Pomerantz
Caryl Ferber Poser & Peter Poser
Risa & Steven Raich
Robin & Richard Redniss
Meredith & Eric Reuben
The Romanowitz Family
Joan & Robert Rosenthal

\$5,000 - \$14,999 (continued)

Eileen H. Rosner
Sally & James Rothkopf**
Nancy & Gary Schulman
Stephanie & Larry Sherman
Bracha & Jerry Silber
Phyllis & Harvey Walzer
Mia & Lonny Weinstein
Ronnie & Michael Wiederlight
Cheryl & David Wolff
Dorothy & Steven Zeide
Stephanie & Daniel Zelazny

\$500 – \$4,999

Anonymous (12)
Diane & David Arditti
Marian Bauer
Wendy & Joel Brest
Sandra Burn, z'l
Rita & Michael Buttermann
Amy & Aron Davidson
Karen & Dan Davis
Robin Evans
Maxine & Jay Freilich
Catherine & Craig Giventer
Susan & Larry Holzman
Hayley & Joshua Levine
Ilene & James Locker
The Magida Family
Lisa & Jeffrey Manheim
Marsha Matthews
Karen Resnick
Stewart Rosenblum
Irma Ross**
Judy Schneiderman
Danielle & Lael Shapiro
Sandra & Alvin Siegertel
Beth & Peter Silver
Marcia & Mark Staines
Suzanne & Norman Stone
Roberta & Barry Strom
Jane Levine & Adam Tronick
Beth & Sanford Weinberg
Sheila & Daniel Wolfson
Dana Horowitz & Peter Wolly

*Planned Giving

**Donor and Planned Giving
Donor List as of 2/22/2021

DONATE ONLINE
Go to: www.tbe.org/donate/

OPPORTUNITIES FOR GIVING

- ☒ Adult Education Fund
- ☒ Beth El Cares
- ☒ Beth Elders
- ☒ Debra Wald Goldberg Kindergarten Scholarship Fund
- ☒ Frank & Rose Rosner Memorial Fund (maintenance)
- ☒ General Fund
- ☒ Kiddush Fund
- ☒ Matthew Klein Memorial Sanctuary Garden Fund
- ☒ Emmet Manheim Playground Fund
- ☒ Mitzvah Garden Fund
- ☒ Music Fund
- ☒ Prayer Book Fund
- ☒ Project Ezra Fund
- ☒ Religious School Fund
- ☒ Reyut Shabbat Bag Fund
- ☒ Security Fund
- ☒ Solar Fund in memory of Norma Mann, z'l
- ☒ Youth Fund

DISCRETIONARY FUNDS

- ☒ Rabbi Joshua Hammerman's Mitzvah Fund
- ☒ Cantorial Soloist Katie Kaplan's Mitzvah Fund
- ☒ Hazzan Sidney Rabinowitz' Mitzvah Fund

ATTENTION PARENTS OF COLLEGE STUDENTS

Rabbi Hammerman would like to stay in touch with your child while he/she is away at college. Please send his/her e-mail address to Beth in the Temple office at adminassist@tbe.org. *Thank you!*



Get involved, please...

Help Wanted! In order to maintain our vibrant and dynamic community, the Fund-Raising Committee needs more members to support TBE and volunteer their skills and talents. Many of these opportunities ask for very small-time commitments. Please consider getting involved with the:

Annual Appeal | Temple Rock | Cantor's Concert

If you are interested in volunteering, please contact us and we will give you more information.

Thank you!

Art Laichtman
Fund-Raising Chair
aelaichtman@optimum.net

BETH EL CARES

Beth El Cares focuses on chesed and tzedakah by helping the poor and unfortunate through mitzvot, both in our synagogue and the greater Stamford community. We welcome volunteers! This is the work we are currently engaged in. If you are interested in volunteering in any of these endeavors, please contact the person listed.

Reyut (Friendship): Committed to serving the needs of those in our TBE community, including friendly visits, assistance with errands and transportation, Shabbat bag delivery to hospitalized patients. Contact Melanie Massell at reyut@tbe.org or 203-324-7190.

Project Ezra: Providing pre-shiva meals to the bereaved in the congregation. Contact Joy Katz at joyakatz@yahoo.com or 203-329-3359.

Serving the homeless: Helping prepare and serve food — you can do either or both — to the homeless at New Covenant Center in Stamford on the fifth Thursday of each month. Times are 2:30-4:15 pm and 4:15-5:30 pm. Contact Amy Temple at aetemple@optonline.net or 203-496-1309.

High Holiday Food Drive: Contact Sharon Turshen at 203-323-3872

Christmas dinners at local homeless shelters: Contact Amy Temple at aetemple@optonline.net or 203-496-1309.

SEEKING SHABBAT GREETERS WHEN WE RETURN

Do you like getting a warm "Shabbat Shalom" as you enter shul on Saturday morning?

Our greeting program has been extremely well received. To keep this program going, we need volunteer greeters like you.

For more information Contact Barry Strom at barrystrom@gmail.com

Thanks for helping make Temple Beth El a warm and welcoming place to be.

CELEBRATING A SPECIAL EVENT? COMMEMORATING A YAHRTZEIT?

Please consider sponsoring a VIRTUAL Kiddush, following Shabbat Services, or an Oneg Shabbat, following our Friday evening services.

Contact Steven Lander for all of the new, reasonably priced Kiddush options at 322-6901, ext. 304 or execdir@tbe.org.

PAY YOUR DUES ONLINE

Go to www.tbe.org/donate and click on member payments.

Questions? Contact Linda at 203-322-6901, ext. 302 or lindar@tbe.org.

WE ARE GRATEFUL FOR YOUR CONTRIBUTIONS

IN HONOR OF:

THE MARRIAGE OF DAVID ARONICA & ANDREE CICCARELLI

Caryl & Peter Poser

SHABABIMBAM

Stephanie Samuels & Michael Carniol

THE BIRTH OF MARLOWE WILLOUGHBY JUDD

Betsy & Peter Kempner, Marsha Colten & Robert Cohen

RABBI JOSHUA HAMMERMAN FOR ALL OF THE CHESED THAT YOU DO

Debra Emery & Richard Schwartz

EILEEN H. ROSNER FOR ALL OF THE CHESED THAT YOU DO

Debra Emery & Richard Schwartz

REBECCA POSER'S ENGAGEMENT TO LINDSAY KLEIN

Nan & Paul Gordon

THE BIRTH OF SOPHIA CHARLOTTE ELLEN BREWER

Barbara & Stan Friedman, Ruth Kwartin, Sue Frieden, Marsha Colten & Robert Cohen

THE BIRTH OF RUBY HARLOWE ARENSON

Barbara & Stan Friedman, Sally & Jim Rothkopf, Betsy & Peter Kempner, Sue Frieden, Marsha Colten & Robert Cohen

THE BIRTH OF CAMRYN PAIGE ESPINOSA

Marsha Colten & Robert Cohen

RABBI GERRY GINSBURG

Sandy & Alvin Siegertel

RABBI JOSHUA HAMMERMAN MITZVAH FUND

In honor of...

Aaron Friedman becoming a Bar Mitzvah by Rachel & Keith Friedman

KATIE KAPLAN, CANTORIAL SOLOIST MITZVAH FUND

In honor of...

Aaron Friedman becoming a Bar Mitzvah by Rachel & Keith Friedman

EMMET MANHEIM PLAYGROUND FUND

In honor of...

Aaron Friedman becoming a Bar Mitzvah by David Monson

YOUTH PROGRAMING FUND

In memory of...

Sylvia Kweskin, z'l, by Ilene & Jim Locker & Family
Fannie Bufferd, z'l, by Ilene & Jim Locker & Family

TREE OF LIFE

A leaf on the Tree of Life has been dedicated in memory of...

Jeffrey Shapes, z'l, by Friends of The Shapes Family

INFORMATION FOR YOU...

When making a donation an acknowledgement will be mailed to the designee for donations of \$10 or more. Donations of less than \$10 will be acknowledged only in the Bulletin. All donations will be published in the Bulletin unless you state that you wish to be anonymous.

SHIVA NOTICES AVAILABLE ON-LINE

Congregants who are looking for shiva information can now quickly look online instead of searching their inbox for the announcement or calling the synagogue office. Just go to TBE's website (www.tbe.org) and click "Shiva Notices" under the WHAT'S NEW menu.

CONTRIBUTING SHARES OF STOCK TO TEMPLE BETH EL

One way to boost your charitable contributions to Temple Beth El is to give shares of appreciated stock instead of cash. You do not pay any tax on your capital gain, and your charitable deduction is the shares' entire fair market value.

Beth El members may contribute shares of stock to satisfy their dues pledge, their annual fund pledge, and other contributions to the Temple.

After consulting your tax advisor, please contact the TBE office at 203-322-6901.

TREE OF LIFE

A beautiful way to commemorate a special occasion is to purchase a "leaf" on our beautiful "Tree of Life" sculpture adorning our Temple lobby. There are many more leaves available for your own personal inscriptions.



The following categories are still available:

Triple Chai	\$5,400
Silver Leaves - Gold Border	\$750
Silver Leaves	\$250



REMEMBERING OUR LOVED ONES



Sandy & David Moreinis **JOSEPH ABADI**
 Joanne & Marshall Goldberg **ISADORE ABRAMS**
 Marlyn & Rich Agatstein **WILLIAM ACKERMAN**
 Ruth Alpert **NELSON ALPERT**
 Carly Brinster & David Amsellem **ALBERT AMSELLEM**
 Sheila & Gordon Brown **HINDA ASHER**
 Maddy Shapiro **ROSE BELITZ**
 Peggy & Alan Kalter **RICHARD BELL**
 Karen Blueweiss **ANNE BLUEWEISS**
 Gail & Raymond Walter **FALEK BRAUM**
 Marcia & Mark Staines **JULIUS BRESSLOUR**
 Sheila & Gordon Brown **ARTHUR BROWN**
 Stewart Casper **IRWIN CASPER**
 Malerie Yolen-Cohen & Jeff Cohen **GERALD COHEN**
 Melanie Massell **FRANK D'ANDREA**
 Evelyn & Bruce Kahn **IDA ELKAN**
 Ronnie & Edward Fein **PEARL FEIN**
 Roselyn Finchler **ARTHUR FINCHLER**
 Judy Schneiderman **IDA FINKELSTEIN**
 Marilyn Galler Sofer & Mitch Sofer **SARAH & STANLEY GALLER**
 Marcia Bick Gershman & Stanley Gershman... **HARRY GERSHMAN**
 Fran & Rabbi Gerry Ginsburg **DAVID GINSBURG**
 Sondra & Leo Gold **SAMUEL GOLD**
 Kenneth Goldberg **DEBRA WALD GOLDBERG**
 Robin, Spencer & Jarad Evans **MITCHELL GUNTY**
 Karen & Richard Hainbach **FRED HAINBACH**
 Rhoda & Sheldon Pearlman **DORA HALPERN**
 Leonor Lopez **FERNANDO HALPERN**
 Marsha & Ed Greenberg **ESTHER HANDLER**
 Carolyn Nadel-Farin & Philip Farin **SYLVIA HANTMAN**
 Steven Grushkin & Family **LILLIAN HELLMAN**
 Susan Frieden **RUTH & NORMAN HILFER**
 Madge & Michael Kellick **ELMER HUPPERT**
 Jerry Jacobs & Family **MURRY JACOBS**
 Sari & Alan Jaffe **TILLIE JAFFE**
 Peggy & Alan Kalter **DORIS KALTER**
 Madge & Michael Kellick **IDA KELICK**
 Adrienne & Ben Kirschenbaum **HARRIET KIRSCHENBAUM**
 Helen & Martin Donner **SHIRLEY KLEINER**
 Bernice Trell **ARTHUR KORNGOLD**
 Kathy & Howard Kraus **DANA KRAUS**
 Ellen, Myron & Sam Porto **EUGENE KRINICK**
 Roni & Allan Lang **JOSHUA LANG**
 Ann & Julius Lasnick **BADANA & HERMAN LASNICK**
 Lori & Stuart Ratner & Family **BERTRAM LAVINE**
 Helen & Martin Donner **SUSAN LEIFER**
 Leonor Lopez **JOSÉ LOPEZ**
 Stacey & Stuart Nekritz **LYDIA & JEROME NEKRITZ**
 Roslyn & Merritt Nesin **ALEXANDER NESIN**
 Roslyn & Merritt Nesin **EUGENE NESIN**
 Sandra & David Oberhand **MICHAEL OBERHAND**
 Suzanne & Craig Olin **ELLIOTT OLIN**
 Suzanne Pianin **RICHARD PIANIN**
 Julie & Lenny Rakowitz **DAVID RAKOWITZ**
 Rosenblum Family **ELMER ROSENBLUM**
 Mina Roth-Dornfeld **DORA ROTH-DORNFELD**

Diane & David Arditti **LEE ROTHSCHILD**
 Barbara & Steven Rothstein **ANNE ROTHSTEIN**
 Magida Family **JOY RUBIN**
 Joyce & Lewis Slayton **LENA RUBINOVITZ**
 Gail & Bruce Stone **PHIL SALTZMAN**
 Carol Schwartz & Family **EVELYN SCHECTER**
 Karen Alter-Reid & Paul Reid **ESTELLE SCHUTZMAN**
 Lori & Bruce Tobin **BARBARA SCHWARTZ**
 Debora & Paul Weinstein .. **MARILYN & BERNARD SCHWARTZ**
 Marsha Shendell & Family **MILDROSE SHENDELL**
 Sheila & Gordon Brown **MAX SHEVRIN**
 Nancy Wolfson & Family **SOPHIE SIDEROWF**
 Linda Simon **JAY SIMON**
 Barbara Rosenberg **JACOB SKYDEL**
 Alan Sosnowitz **LILLY SOSNOWITZ**
 Ellen & Joel Mellis **CATHARINE STEINAM**
 Donna Wolff **MORTON STONE**
 Dana Horowitz & Peter Wolly & Family **JILL WOLLY**
 Gail & Bruce Stone **SADIE & FRANK STONE**
 Stuken Family **ANNA WALLACH**
 Lorelee & Phil Granowitz **WALLY WALLACH**
 Sondra & Leo Gold **DAVID WITTENBERG**
 Nancy Wolfson & Family **GERTRUDE WOLFSON**
 Malerie Yolen-Cohen & Jeff Cohen **BURTON YOLEN**
 Annbeth Winters **WILLIAM YONET**

IN MEMORY OF:

GAYLA HALBRECHT, z'l
 Dana Horowitz & Peter Wolly, Sue Frieden
RONALD ARANOWITZ, z'l
 Barbara & Warren Brandt
ARNOLD APPLEBAUM, z'l
 Liz & Scott Krowitz, Betsy & Peter Kempner
HERBERT SACKIN, z'l
 Illustrato Family, Marilyn Schulman, Melanie Massell
IRENE ROSENTHAL, z'l
 Liz & Scott Krowitz
DAVID BRODY, z'l
 Lisa & Harry Rich
BENITA SAMUELS, z'l
 Judy Schneiderman
STRATTON ADAMS, z'l
 Ruth Kwartin, Rhoda & Sheldon Pearlman
FRANK MOTT, z'l
 Fran & Rabbi Gerry Ginsburg
JUDITH LAICHTMAN, z'l
 Manheim Family

WE MOURN THE PASSING OF...

ARNOLD APPLEBAUM, father of Lisa Rome
DAVID BRODY, father of Rick Brody
GAYLA HALBRECHT, mother of Beth Boyer
STRATTON ADAMS, grandson of Joan Weisman
SHIRLEY WARREN, stepmother of Judy Amster
JUDITH LAICHTMAN, mother of Arthur Laichtman
GLORIA AISENBERG, mother of Mara Hammerman

an hour after Shabbat was over. The home was full of refreshments and spirits. For the first time, Velvel heard each of his Hasidim sing solo. At the end of the evening, each left full of good cheer.

The producers had been able to rent a studio in New York City. A well known engineer was engaged: David Hancock, who was not Jewish, became very familiar with and developed great fondness for Hasidic music. He cautioned Velvel to get the Hasidim into the studio no later than 7:30pm for a rate of \$45/hour. Velvel made sure that each of his singers and ringers knew the cost and importance of being on time.

Velvel arrived at the studio by 6:30pm. At 7:20pm Hancock asked, "Where are they?" Looking for his singers, Velvel opened his window and looked upon 8th Avenue. To locate his Hasidim was like looking for a needle in a haystack. At 7:25pm, Velvel stretched his head out of the window to get a better view. This time he saw his Hasidim about a block away. As they approached, he noticed that his Hasidim were about a block away with far too many of them. His singers had encountered another group of Hasidim and were walking together up 8th Avenue. There were more than 60 people coming into the studio. Only 24 of them belonged in Velvel's choir and orchestra. Before Velvel had a chance to vent his anger, he saw two men remove bottles of soda from a crate and several men unwrap baked goods. Finally, a Hasid opened a paper bag to reveal four bottles of 192 proof vodka. He began to pass filled shot glasses to all the singers. Velvel began to shout, "What is going on here?"

"We're going to have a farbrengen." one of the Hasidim responded gingerly.

"Here? Now? Why?" Velvel asked in chagrin.

The Lubavitcher Rebbe said it was necessary for them to "warm up," both physically and spiritually. This could only be accomplished through a farbrengen.

"How long will this last?" Velvel asked.

"This farbrengen will last as long as is long. Not one minute longer." came the reply.

Velvel was asked to join in the L'chayim and was given a small glass filled with vodka. Never having drunk alcohol of this strength, he imagined that the effect would be similar to drinking Drano, the liquid that "cleans and opens drains."

As the producers and sound engineers looked on from the control room in amazement, one of them said, "I don't believe this. We should get a reporter and a camera man from Variety because no one will believe this."

Velvel's singers and the other Hasidim took their time - 50 minutes in all. Finally, all those not in the chorus were moved aside. One Hasid proclaimed, "Now we are ready to do the bidding of the Rebbe."

Velvel felt that he had control of the situation. However, just before the downbeat to the orchestra, Rabbi Zalmanoff approached him. "Before we begin, I need a small favor from you."

"Certainly." Velvel replied. "What is it?"

"Please don't conduct."

"Please what?" Velvel asked in astonishment. "What do

you mean don't conduct?"

"Don't make with the hands." he said. "Sit down, you'll get paid anyway."

Velvel retorted, "I spent six months of my life rehearsing this group to get them ready for this recording, and now you tell me not to conduct? What is the problem?"

The Rebbe responded, "I will tell you the truth. You can conduct, but nobody will watch you. If they watch you, it will get in the way of their concentration."

There it was out in the open. Velvel moved toward the chorus and gave the down beat while 16 pairs of eyes closed.

They sang with joy and fervor, and the entire studio was permeated with the intensity of their singing. Thus began the recording session. During a break in the recording there was a cry of "Cut." Velvel looked up and found that his singers had disappeared.

"Where are they?" Velvel shouted.

Outside on 8th Avenue he found his chorus.

"What are you doing out here?"

"You did not see what happened up there in the studio." the Hasidim responded. "A girl in almost no clothing came into the room as we were singing."

A smaller studio had been rented out to a group of ballet dancers in skintight leotards.

From below, the Hasidim responded, "We are Hasidim here to do the bidding of the Rebbe. For us, the recording is similar to a worship service. So in a situation like this, we must do exactly what we would do in a synagogue."

"Okay, it's over. Let's go back to the recording." Velvel responded.

Velvel went to the manager to make a change with the dancers. "Impossible." said the manager.

"Do you know who my people are?" Velvel asked.

"Impossible." said the manager. "No, and frankly, I don't care." replied the manager.

"They are a group of Amish from Lancaster, and they are here with their spiritual leader." Velvel explained.

The manager hesitated then gave in to Velvel, and changed the room for the dancers. As the recording session resumed, there was another problem. Some of the singers sang flat and some sang sharp. To salvage the singing of these singers, Velvel solved the problem by bringing the Hasidim back to the studio to sing a cappella. After they left, the sound engineer overdubbed an accordion accompaniment to the vocals. When the pitch of the singers began to rise, the engineer adjusted the recorded speed of the accordion to match the pitch of the Hasidim. Thankfully, the songs were saved and became part of the recording. When it was released, a review in the London Jewish Chronicle proclaimed this to be one of the finest, authentic Jewish recordings ever made.

Several months later the producers received a call from Leonard Bernstein's office. They were told that Bernstein had come across the recording and wanted to use one of the selections for a program of religious folk music. They gave their permission.

The selection was played on Christmas Eve and on a Friday night, no less.

Thank you, Velvel Pasternak!



Hazzan Sidney Rabinowitz

ON ONE FOOT continued from page 3...

learn from Exodus chapter 21:19, that we are obligated to heal a person who has been injured due to our negligence. The word “R-F-H” is repeated twice, “*Rapo – yerapeh*,” which teaches us two things. First, that the healing is both personal and national. When we heal a single person in a society, we are also healing that society. And secondly, the injunction here has been taken as a Torah endorsement of the science of medicine.

So healing is both personal and collective, and Judaism and science are partners.

This tells us that perhaps we should recite blessings both when we have received the vaccine individually and again when it is declared that we have achieved herd immunity, both here in the US and around the world.

May that happen speedily – or at least by Rosh Hashanah!

As for Passover, let’s take those baby steps out the door as soon as it is deemed safe to do so, for that will be the Season of our Liberation.



Rabbi Joshua Hammerman



Temple Beth El 2020 Blood Drives

June 21 2020: 22 pints
July 1 2020: 19 pints
August 28 2020: 22 pints
September 9 2020 :33 pints
October 13 2020 :28 pints
November 3 2020: 25 pints
December 2 2020: 23 pints

516 lives saved

Up to three lives saved for every donation

Your Hometown Jewish Funeral Home.
Locally owned and operated by Tom Gallagher.

203.324.4494

Our family proudly serving your community for generations.

- Private Tahara Room
- Shomer Available

- Graveside Services
- Livestream Service Available

- International & Domestic Transportation
- Serving All Cemeteries



Thomas M. Gallagher
Owner & Funeral Director

104 Myrtle Avenue, Stamford, CT 06902 | 203.324.4494
info@sholomchapel.com | www.SholomChapel.com

HAVE YOU VISITED OUR WEBSITE?

www.tbe.org

Find out about the latest news and upcoming activities ... access our online membership directory ... register for events and make donations ... connect to TBE's Twitter and Facebook pages ... and much more.

DID YOU KNOW?

TBE offers free family membership for the first year to any member's child on the occasion of his or her marriage. For more information, contact Steve Lander at 203-322-6901, ext. 304.



MEMORIAL PLAQUES



Inscribe the names of your loved ones on a plaque for our Chapel wall along with a light to commemorate their *yahrtzeit* and *yizkor* observances throughout the year.

For details, contact Mindy at office@tbe.org or 203-322-6901, ext. 301.

THE TBE 100 MITZVAH PROJECT

The TBE 100 Mitzvah Project provides opportunities for congregants to honor TBE's centennial through the performance of *gemilut hasadim* (acts of loving kindness) that help charitable organizations in need of volunteers and non-monetary contributions.

Mitzvah Opportunities at the Schoke Jewish Family Service of Fairfield County

- **Work at the kosher food pantry** at SJFS. Distribute food during walk-in hours: Monday - Wednesday, 10:30 am-12:30 pm. Organize and maintain the pantry: Monday - Friday, 9 am - 4 pm.
- **Deliver meals and food items** to homebound clients. Time is flexible.
- **Participate in Mitzvah Monday** with your kids on the third Monday of each month (from 3 pm-5 pm). Bring kosher food items to the pantry and help stock shelves. GREAT for teens!
- **Visit a homebound client** for a "friendly visit" to alleviate loneliness. Time is flexible.
- **Donate food and non-food items.** Items can be dropped off at the TBE office or at SJFS.

If you are interested in doing one or more of these mitzvahs, please contact Jill Knopoff at (203) 921-4161. Don't forget to mention you're from TBE.

After completing a mitzvah, please send a note to mitzvah100@tbe.org with the name or names of the family members who participated, the mitzvah, and a photo if possible.

THIS PASSOVER, AS WE RECALL THE STORY OF OUR ANCESTORS ...



Let's also write the next chapter.
HOW WILL YOU ASSURE JEWISH TOMORROWS?

TEMPLE BETH EL
350 Roxbury Road
Stamford, CT 06902
www.tbe.org



To create your legacy contact
Steven Lander
execdir@tbe.org | 203-322-6901, ext. 304

We Capture Your Precious Memories on Video...

Weddings ♦ Bar/Bat Mitzvahs

Proud to be the official TBE videographer

Tom was able to capture the spirit and joy of our B'nai Mitzvah service and party in a video we will always treasure. He was also a pleasure to work with from start to finish.

Jared Finkelstein

If you are looking for a videographer, look no further! Tom was a delight to work with and the finished product was incredible. He created separate videos of my daughter's Bat Mitzvah service and celebration and captured all aspects of the joy of the day.

Jill Teich

Thomas Pace, Jr. ♦ 203.335.0168
T & J Video Service

We also transfer home movies/video to DVD.

FETHI PHOTOGRAPHY

cell: 914-629-2204

fethic@me.com

www.fethiphotography.com

Experience working with TBE for over 25 years.

Ask your friends!



MADDY SHAPIRO

Sales Associate

REALTOR® of the Year 2011

203-940-5569 CELL

203-329-9792 HOME OFFICE

Maddy.shapiro@cbmoves.com



RESIDENTIAL BROKERAGE

Operated by a subsidiary of NRT LLC

www.maddys Shapiro.com

Artists' Market

EXTRAORDINARY ART & FRAMING

American Crafts: Glass, Wood, Ceramics & Jewelry
Sophisticated Judaica: Mezuzahs, Menorahs, & More

Expert Frame Design and Manufacturing on Premises
"from the simple to the extraordinary"

Fine Contemporary Photography & Original Graphics
Specialist in M. C. Escher Original Masterworks

www.ArtistsMarket.com

163 Main Street, Norwalk

203.846.2550

✓+ Math Tutoring SAT & ACT Preparation

I. Jeff Turshen, Ph. D.

- All Levels of Math - Middle School, High School (Basic to Advanced Placement), and College
- Experienced Teacher - High School & College

References provided upon request

203-323-3872

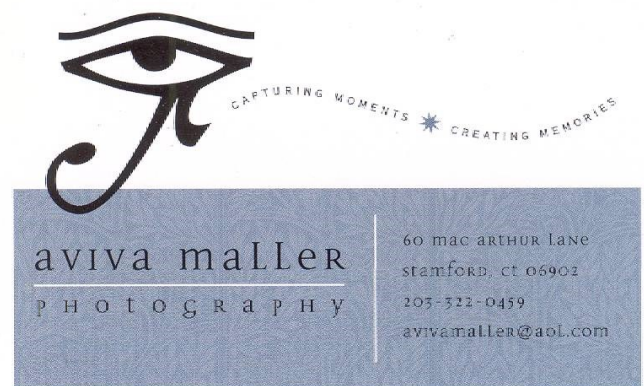
IJTurshen@aol.com



A Full Service Production Company:

- Event Decor
- Event Management
- Live Sound
- Video and Photography
- Rigging and Staging
- Webcasting
- Lighting
- Non-Profit Events
- Trade Shows and Product Launches
- A/V Equipment Rental
- Drone Imagery Services

25 Viaduct Road Stamford, CT 06907 P: (203) 517-4688
www.kpeventsgroup.com



aviva maller
PHOTOGRAPHY

60 mac ARTHUR Lane
STAMFORD, CT 06902
203-322-0459
avivamaller@aol.com

Check out our special website
Dedicated to TBE's event space

www.thebigeventspace.com

Please let your friends and business associates know how we can fulfill their celebratory and meeting needs.

ART GREENWALD

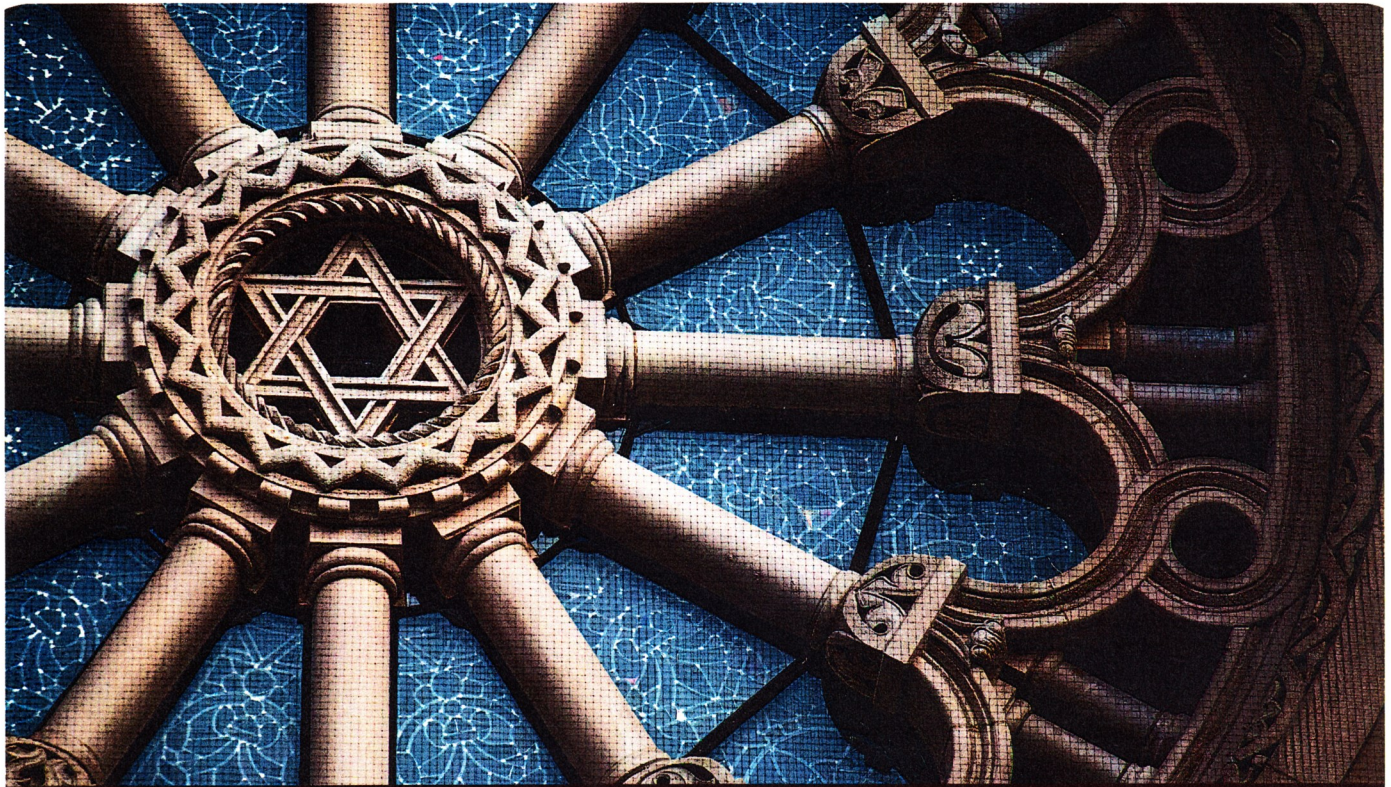
President

INTEGRATED PROTECTION SERVICES, LLC
320 Boston Post Road, Suite 140 DARIEN, CT 06820
Tel: 203.322.0772

WWW.INTEGRATEDPROTECTIONSERVICES.COM

**SYSTEMS AND SERVICES FOR SECURITY
AND FIRE PROTECTION**
SERVING CONNECTICUT AND NEW YORK
COMMERCIAL AND RESIDENTIAL





TAKING CARE OF EACH OTHER
is what community is all about.

WE'RE PROUD TO SERVE our community with personal, compassionate care.
As your Dignity Memorial® professionals, we're dedicated to helping families create
a unique and meaningful tribute that truly honors the heritage of the Jewish faith.

We invite you to contact us today to learn more.

Dignity®
MEMORIAL

✧ LIFE WELL CELEBRATED™ ✧

LEO P. GALLAGHER & SON

FUNERAL HOME

STAMFORD

203-327-1313 LeoPGallagherStamford.com