

Temple Beth El Bulletin

A Conservative, Inclusive, Spiritual Community

www.tbe.org

Volume 48 Issue 3 (bi-monthly)

May-June 2021

Iyar/Sivan/Tamuz 5781

Religious School Students Bake Matzah and Create Seder Plates



The Elevator Is Delivered to TBE.



TEMPLE BETH EL - BOARD OF TRUSTEES**EXECUTIVE COMMITTEE**

Lisa Manheim, President	917-690-2712
Carl R. Weinberg, Immediate Past President	203-322-8675
Scott Krowitz, First Vice President	917-902-1447
Stan Friedman, Vice President	203-322-0416
Dana Horowitz, Vice President	203-321-0018
Devra Jaffe-Berkowitz, Vice President	203-978-1113
Arthur Laichtman, Vice President	203-461-8223
Christopher Maroc, Vice President	914-215-2025
Lael Shapiro, Vice President	203-273-8380
Daniel Young, Vice President	203-975-1990
Robert S. Cohen, Treasurer	203-329-9622
Emily Klein, Secretary	347-901-0228

ADVISORS

Steven Sosnick	203-219-0270
Mia M. Weinstein	203-595-0528

TRUSTEES

David Amsellem	203-832-4335
Lori Bushell	203-962-2974
Jeffrey Cohen	203-358-9911
Kahla Cooper	203-554-7888
Aron Davidson	203-274-6363
Jon Eisenstein	203-321-8369
Leslie Glenn	203-273-7215
Susan Greenwald	203-322-0771
Michael Handel	203-981-1987
Julie Rosenberg	203-975-8880
Irma Ross	203-246-4880
Barbara Rothstein	203-614-8053
Judy Schneiderman	203-569-4969
I. Jeffrey Turshen	203-323-3872

SISTERHOOD PRESIDENT

Karen Resnick	203-536-3115
---------------	--------------

MEN'S CLUB PRESIDENT

Josh Levine	203-276-4935
-------------	--------------

PAST PRESIDENTS

Gordon Brown	203-276-8688
Rosalea Fisher	203-323-1449
Fred S. Golove	203-322-0295
Herbert Kahan	203-595-9981
Alan Kalter	203-322-8220
Peter K. Kempner	203-968-8079
Mark Lapine	203-329-9879
Gary P. Lessen	203-322-7617
Sylvan D. Pomerantz	203-968-0605
Brian Rogol	212-531-8203
Eileen H. Rosner	203-461-0506
Mia M. Weinstein	203-595-0528

WHERE TO FIND IT

Joshua Hammerman, Rabbi.....	Page 3
Katie Kaplan, Cantorial Soloist.....	Page 3
May-June Service Schedule	Page 4
Adult Education	Page 5
B'nai Mitzvah.....	Page 7
TBE Clubs.....	Page 9
Men's Club	Page 11
Sisterhood	Page 12
Beth El Cares	Page 14

COMMITTEE CHAIRPERSONS**Board of Education**

Kahla Cooper.....	203-554-7888
-------------------	--------------

Empty Nesters

Sue and Carl Shapiro.....	203-353-0657
---------------------------	--------------

Facilities

Lael Shapiro.....	203-273-8380
-------------------	--------------

Finance

Robert S. Cohen	203-329-9622
Susan Frieden.....	203-869-4282

Fund Raising

Arthur Laichtman.....	203-461-8223
-----------------------	--------------

High Holy Days Task Force

Devra Jaffe-Berkowitz	203-978-1113
-----------------------------	--------------

High Holy Days Food Drive

Sharon Turshen.....	203-323-3872
---------------------	--------------

Human Resources

Carl Weinberg	203-322-8675
---------------------	--------------

Marketing and Communications

Stan Friedman.....	203-322-0416
--------------------	--------------

Membership Committee

Chris Maroc.....	914-215-2025
------------------	--------------

Mitzvah Garden

Harriet Weinstein.....	203-353-8873
------------------------	--------------

Project Ezra

Joy Katz	203-329-3359
----------------	--------------

Reyut Committee

Melanie Massell	203-324-7190
-----------------------	--------------

Ritual Committee

Devra Jaffe-Berkowitz	203-978-1113
-----------------------------	--------------

Social Action Committee

Dana Horowitz	203-321-0018
---------------------	--------------

Tzedek Committee

Julie Rosenberg.....	203-975-8880
----------------------	--------------

Immigration Task Force

Belle Horwitz.....	203-968-1296
--------------------	--------------

OUR STAFF IS MOST EAGER TO ASSIST YOU

Monday - Thursday, 9am - 5:00 pm | Friday, 9am - 2:00pm

Phone: 203-322-6901 Fax: 203-322-0532

Joshua Hammerman, Rabbi (rabbi@tbe.org)	ext. 307
Katie Kaplan, Cantorial Soloist (cantor@tbe.org)	ext. 315
Sidney G. Rabinowitz, Hazzan Emeritus (hazzan@tbe.org)	ext. 309
Steven Lander, Executive Director (execdir@tbe.org)	ext. 304
Lisa Gittelman Udi, Director of Congregational Learning (eddir@tbe.org)	ext. 305
Rabbi Gerry Ginsburg, Associate Rabbi (rabbiginsburg@tbe.org)	ext. 300
Jami Fener, Engagement Coordinator (engagement@tbe.org)	917-680-9413
Linda Rezak, Bookkeeper (lindar@tbe.org)	ext. 302
Mindy Rogoff, Temple Secretary (office@tbe.org)	ext. 301
Alberto Eyzaguirre, Facilities Manager (maint@tbe.org)	ext. 314

ON ONE FOOT

ON THE ROAD AGAIN!

Over the past few weeks, we've started that long, arduous climb back to normalcy – or a *new* normalcy, as we've begun to reflect on how this past year has changed us, and where we are headed. We invite you to reflect on what has inspired you, what has saved you, what has given you hope, what has been lost. What would you like to remember and record about these many months? What wisdom have you gained? What survival techniques brought you to the other side of these dark days? What gave you hope? I know that our daily minyan, for instance, has brought huge comfort to many. What did zoom services mean to you during this year?

Please send your reflections on these matters to Carol Krim at carolbkrim@gmail.com. I plan to compile them and speak about them over the upcoming High Holidays (which, if you haven't noticed, are EARLY this year: think "Labor Day.")

Usually, it's travel that changes our perceptions, reorienting us by holding up a mirror to our experiences. This year, without venturing beyond state lines, we've held up a different kind of mirror, maybe a bit of a funhouse mirror, and we've emerged from it as changed as we've been following any journey requiring a trip through the TSA line at the airport.

But now it's time to get back on that horse, metaphorically speaking. When everything closed down a year ago March, about 40 of us were set to depart for Cuba **that week**. The trip was postponed, the right decision at the time, as excruciating as it was, but I'm happy to say it has been rescheduled for next January 9-16. Professor Berk will still be escorting us. There is room remaining for new people to come aboard. To see the itinerary go to: <https://files.constantcontact.com/59fef7db001/423f3e7c-6167-426b-9e39-94709ea38ce7.pdf>.

We were also planning a trip to eastern and central Europe last summer. Didn't happen, and Covid shut down registration before plans were completely finalized. I'm happy to announce that the trip has been rescheduled for the summer of 2022. Since travel is going to take off over the several months, as more people are vaccinated, we would like to get indications of interest in this trip as early as possible. Please let me know if you would like to join us at rabbi@tbe.org.

We know that there are still miles to go before we sleep, but hopefully we can begin to rest a little more easily. I invite you to join us in any manner that makes you comfortable, in person or on Zoom, as we move forward, beyond the pandemic, together.

Rabbi Joshua Hammerman



KATIE KAPLAN, CANTORIAL SOLOIST

Wild Geese by Mary Oliver

You do not have to be good.
You do not have to walk on your knees
for a hundred miles through the desert
repenting.

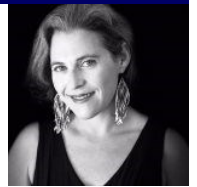
You only have to let the soft animal of your body
love what it loves.

Tell me about despair, yours, and I will tell you mine.
Meanwhile the world goes on.

Meanwhile the sun and the clear pebbles of the rain
are moving across the landscapes,
over the prairies and the deep trees,
the mountains and the rivers.

Meanwhile the wild geese, high in the clean blue air,
are heading home again.

Whoever you are, no matter how lonely,
the world offers itself to your imagination,
calls to you like the wild geese, harsh and exciting -
over and over announcing your place
in the family of things.



This past year has certainly pushed us all to varying degrees of breaking, frustration, loneliness, and examination of the lives that we lead. This poem, Wild Geese, by Mary Oliver illuminates the steadfast and constant presence of nature and the continuation of life despite challenging times. As we launch into spring, see more people vaccinated, and start to reconvene in community with loved ones, this poem encourages us to remember that no matter the struggles we face, we belong in this world and there is a place in it for us.

This next period of re-entry and acclimation into new routines and protocols for picking up and moving forward will not meet everyone in the same place. While many are ready and eager to get back to a perceived sense of "normal," many others are struggling to move forward through deep personal, physical, and spiritual losses of the past year. While our technology has been an incredible tool for connection, it doesn't eliminate the fact that over the past year we've spiritually suffered a loss. In the words of Mary Oliver, many have tried "to be good," have "walked on our knees," and fought to show up and be present for one another, yet how often have we "let the soft animal of our body love what it loves?" How often have we reached inward with self-compassion and grace during what has been a difficult year?

I share this Mary Oliver poem with you as a beacon of hope and as a reminder that it is good, sacred, and holy to be gentle with ourselves as we emerge. As the flowers bloom, the days grow longer, and we begin to rebuild our trust in our collective health and safety. We, like the wild geese, are heading home again and announcing our place in the family of things. Whenever you are ready, we are here for you and we will eagerly welcome you home.

Katie Kaplan, Cantorial Soloist



SHABBAT AND FESTIVAL SERVICES



MAY

Shabbat, May 1

Shabbat Service 10:00am

BROOKE AND JORDAN WOLLY, B'NAI MITZVAH

Friday, May 7

Kabbalat Shabbat Service 6:00pm

Shabbat, May 8

Shabbat Service 10:00am

SASHA HANDEL, BAT MITZVAH

ShaBaBimBam 11:00am

Friday, May 14

Kabbalat Shabbat Service 6:00pm

Shabbat, May 15

Shabbat Service 10:00am

SISTERHOOD SHABBAT

Monday, May 17 - Shavuot, day 1

Shavuot Service 10:00am

Tuesday, May 18 - Shavuot day 2

Shavuot Service 10:00am

Yizkor

Friday, May 21

Kabbalat Shabbat Service 6:00pm

Shabbat, May 22

Shabbat Service 10:00am

JORDAN ALEXANDER, BAR MITZVAH

Friday, May 28

Kabbalat Shabbat Service 6:00pm

Shabbat, May 29

Shabbat Service 10:00am

JUNE

Friday, June 4

Kabbalat Shabbat Service 6:00pm

Shabbat, June 5

Shabbat Service 10:00am

HARRISON TRONICK, BAR MITZVAH

ShaBaBimBam 11:00am

Friday, June 11

Kabbalat Shabbat Service 6:00pm

PRIDE SHABBAT

Elon Green, Guest Speaker

Shabbat, June 12

Shabbat Service 10:00am

Friday, June 18

Kabbalat Shabbat Service 6:00pm

Shabbat, June 19

Shabbat Service 10:00am

Friday, June 25

Kabbalat Shabbat Service 6:00pm

Shabbat, June 26

Shabbat Service 10:00am



Shabbat morning services will be held on Zoom. Friday Night Services will be held on Zoom and in person (registration required).



PRIDE SHABBAT
Friday, June 11, 2021
Elon Green, Guest Speaker

Author of *Last Call*
A True Story of Love, Lust and Murder in Queer New York

Kabbalat Shabbat Service begins at 6:00pm

Zoom details to follow.



MAZAL TOV TO...

Marcia and Mark Staines on the birth of twin grandchildren, Natalie Emma and Evan David, born to Marisa Levi and Andrew Staines.

Binnie Ditesheim on the birth of a great-grandson, Maxwell Gesse, born to Samantha and Graig Fischgrund.

Adrienne and Scott Karpen on the birth of a daughter, Elizabeth.

Alana and Jed Selkowitz on the adoption of a daughter, Marlow Ivy, and to the proud grandparents, Betsey and Arthur Selkowitz.

Karen Feinberg on the birth of a grandson, Austin Shay born to Nikki and Matt Feinberg.



Share your family's simcha (engagement, marriage, birth, Bar or Bat Mitzvah of a child or grandchild) and other joyous event. Just contact the TBE office at office@tbe.org or 203-322-6901, ext. 301.

HONORABLE MENSCHEN TODAH RABAH TO OUR TORAH READERS!

RON COHEN ☆ AMANDA GEFFNER
RABBI GERRY GINSBURG ☆ BONNIE HANDEL
LEXI HANDEL ☆ SASHA HANDEL ☆ DANA HOROWITZ
DEVRA JAFFE-BERKOWITZ
KATIE KAPLAN, CANTORIAL SOLOIST
CAROL KRIM ☆ LISA MANHEIM ☆ JOSH LEVINE
NAOMI MARKS ☆ BERT MADWED ☆ LIAM RAZ
LIRAN RAZ ☆ REBEKAH RAZ ☆ JULIE ROSENBERG
SUSAN SCHNEIDERMAN ☆ LAEL SHAPIRO
MERYL SILVERSTEIN ☆ ERIC STROM ☆ LISA STROM
SARAH STROM ☆ MARGERY VERLEZZA
BROOKE WOLLY ☆ JORDAN WOLLY ☆ MICHAEL WOLLY

THANK YOU FOR SPONSORING THE ONEG-TO-GO

MARNI and MICHAEL HANDEL
DANA HOROWITZ and PETER WOLLY

THANK YOU FOR SPONSORING THE SHABBAT ANNOUNCEMENTS

MARNI and MICHAEL HANDEL
REBEKAH and LIRAN RAZ
LISA and ERIC STROM
DANA HOROWITZ and PETER WOLLY

ADULT EDUCATION

MEDITATION AND GUIDED IMAGERY

with

Katie Kaplan, Cantorial Soloist

Tuesdays, May 11 June 8 at 7:00pm

Join us as we use breath, chant, and visualization to carve out a moment of peace in our lives.

(Zoom link available in the Shabbat Announcements)



TBE SINGERS - A GATHERING

with

KATIE KAPLAN, CANTORIAL SOLOIST

Tuesday, May 4 at 6:30pm



Do you love to sing?

Maybe you are in the TBE CHOIR or considering joining?

Or, you just miss harmonizing and making music together?

Join Cantorial Soloist, Katie Kaplan on ZOOM as she reawakens our minds, bodies, and voices in this interactive and engaging vocal session. She will guide participants through a series of breath/vocal warm-ups focusing on technique, talk choir shop, and teach participants new melodies for services.

Interested? Contact Mindy at office@tbe.org



**NEFESH
MOUNTAIN**

CANTOR'S CONCERT



Special Occasion?

Sponsor The Shabbat E-announcements
(sent every week via e-mail)

The Shabbat Announcements
(distributed each Shabbat at the Temple)
and the Shabbat-O-Gram
(e-mailed every Thursday night)

All three publications for \$72

All sponsors will be acknowledged at the beginning of each of these announcements and also listed in our bi-monthly Bulletin.

Call Mindy in the office at 322-6901 ext. 301.

Saturday Mornings 11:00am



Led by Natasha Fenster
and Steve Epstein!

We will meet on Zoom at
first, but hope to be able
to meet in person soon!

For Zoom link and
passcode, contact
Jami Fener
youngfamilies@tbe.org

TBE ShaBaBimBam

A Shabbat program for families with children 5
and younger (older siblings welcome!)



April 10, 2021
May 8, 2021
June 5, 2021
July 17, 2021
August 21, 2021
September 18, 2021
October 16, 2021
November 13, 2021
December 4, 2021
January 8, 2022
February 5, 2022
March 5, 2022
April 2, 2022
May 7, 2022
June 4, 2022

Questions?
Contact Jami Fener
youngfamilies@tbe.org

Temple Beth El
350 Roxbury Rd.
Stamford, CT
203-322-6901
www.tbe.org
[facebook.com/
youngfamiliesTBE](https://facebook.com/youngfamiliesTBE)

B'NAI MITZVAH

May 1

BROOKE WOLLY

Daughter of Dana Horowitz & Peter Wolly
Sister of Jordan Wolly
Attends Scofield Magnet Middle School
Mitzvah Project: Fundraising to beautify
Emmet's Playground



May 1

JORDAN WOLLY

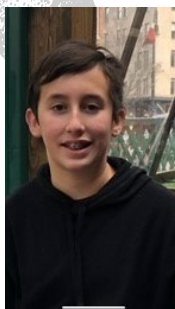
Son of Dana Horowitz & Peter Wolly
Brother of Brooke
Attends Scofield Magnet Middle School
Mitzvah Project: Fundraising and collecting
donated items for Lucky Dog Refuge



May 22

JORDAN ALEXANDER

Son of Natalie and Jeffrey
Brother of Jules
Attends Saxe Middle School
Mitzvah Project: Book Drive with Darien
Book Aid



May 31

WESLEY LEVINE

Son of Hayley and Josh
Brother of Lila
Attends Central Middle School
Mitzvah Project: Fundraising for Stamford JCC



June 5

HARRISON TRONICK

Son of Jane Levine & Adam Tronick
Attends Scofield Magnet Middle School



TREE OF LIFE

A beautiful way to commemorate a special occasion is to purchase a "leaf" on our beautiful "Tree of Life" sculpture adorning our Temple lobby. There are many more leaves available for your own personal inscriptions.



The following categories are still available:

Triple Chai	\$5,400
Silver Leaves - Gold Border	\$750
Silver Leaves	\$250

6th GRADERS CREATE A TALLIT



TBE JEWISH LEARNING CENTER RELIGIOUS SCHOOL OPEN HOUSE!

Sunday, May 16, 11:30am-12:30pm
at

EMMET'S PLAYGROUND!

Bring your children to play and
grab an ice cream from the

ICE CREAM TRUCK!



Meet our teachers and hear about our plans
for the 2021-2022 school year:

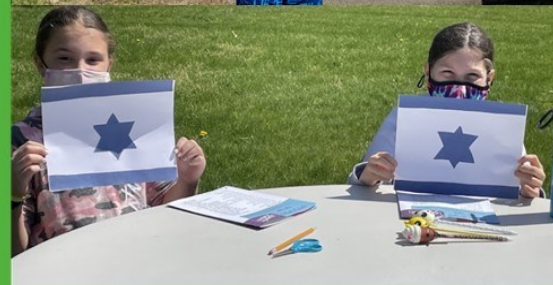
- Sunday exciting outdoor learning sessions
- Classes inside the TBE building in bad weather
- Community building activities and projects
- Thursday Zoom class sessions - retaining best online learning practices
- Monthly drop off program for preschoolers
- Student choice and flexibility in Learning

REGISTER TO ATTEND:

<http://www.tinyurl.com/tbeopenhouse>

Questions? Contact Lisa Gittelman-Udi
eddir@tbe.org 860-830-9942

Temple Beth El, 350 Roxbury Rd., Stamford, CT
203-322-6901 www.tbe.org
[Facebook.com/tbestamford](https://www.facebook.com/tbestamford)



JAMI FENNER, ENGAGEMENT COORDINATOR



TBE Clubs is a TBE initiative that engages small groups of congregants in meaningful activities that fuel the body and inspire the soul. Equally important, TBE Clubs act as a way by which congregants can pursue their passions and find new friends within the synagogue community.

Here is a current list of available clubs, which can also be found on the TBE website at: <https://www.tbe.org/tbe-clubs/>. TBE members interested in joining a club should reach out to the club's point person for more information. If you have any questions or have an idea to start your own club, new clubs will be forming in Fall 2021 - more information coming soon!

TBE MUSICIANS & SINGERS

This intergenerational club will bring together musicians and singers of all ages and experience levels to participate and hopefully perform at the synagogue when the COVID pandemic is behind us. The theme of this group is "Jews that Rock," performing material by Jewish artists, such as Carol King and Billy Joel. The point person, Paul, is a drummer, so he is looking for a bass, guitar, and keyboard player to create the core band. Other club members are invited to sing and/or rotate through different instruments.

Point Person: Paul Weinstein at drpaulweinstein@gmail.com or (203) 219-4191

HEART-TO-HEART

This group is focused on providing support for those dealing with or suffering from grief and loss. We will offer a safe space for listening and sharing, and provide tools to help members move through difficult situations and feelings. The group's intention is to guide members in reclaiming their light inside. Heart-to-Heart will meet over Zoom for now, twice a month, every other Wednesday at 7:00 pm.

Point Person: Hope Stanger HHC, Trauma Therapist and Holistic Health Counselor, at theholisticempire@yahoo.com or (203) 357-0242; or Pamela Tinkham LCSW, Trauma Therapist and Yoga Therapist, at pamelatinkham@gmail.com

BROADWAY AND MOVIES REVISITED

Join other theatre and film lovers to watch movie versions of Broadway shows, as well as films of the past and present. We will compare and discuss shows beyond entertainment value, including their messages as reflections of society, history, and culture. The club will meet monthly over Zoom for the time being.

Point Person: Barbara Rothstein at brothstein320@gmail.com or (203) 614-8053; Carl Shapiro at cshapiro@optonline.net or (203) 273-1968

MITZVAH GARDEN CLUB

The club will provide its members the opportunity to plant and grow their own vegetables and/or flowers in TBE's very special Mitzvah Garden. Members will meet individually or as a family

and each will be able to plant and care for their own bed(s) with the produce/flowers of their choosing. Beds are still available so please reach out soon!

Point Person: Meryl Silverstein at merylandhank@optonline.net or (203) 588-0026



HIKING AND WALKING CLUB

Club members will explore the beautiful venues and trails that are within a one-hour drive of TBE. Members will choose the hikes/walks in which they are interested, considering length, elevation and level. Meetings will take place by Zoom, with hikes and walks in-person.

Point Person: Leslie Heyison at lheyison@gmail.com or (646) 354-3950

TBE STEMers

For those interested in learning and teaching others in the field of science, this is the club for you. We will discuss Jewish topics of interest, such as medical and research ethics, as well as present on individual areas in which we specialize. Meetings will take place monthly over Zoom for now. On occasion, we will also organize lectures and speakers for the congregation.

Point Person: Fran Ginsburg at ginsstamf@gmail.com or (203) 979-9570

PREPARING THE MITZVAH GARDEN



TBE Hiking and Walking Club

Left to right: Rosalea Fisher, Dick Fisher, Allen Krim, Carol Krim, Barbara Rothstein, Joe Heyison, Leslie Heyison, Steve Rothstein, Sue Shapiro, Carl Shapiro

Join Us!
**ANNUAL
MEMBERSHIP
MEETING**

Wednesday, May 26, 2021 at 7:30 p.m.

in person and on Zoom
(Registration Required)

The Board of Trustees invites the congregation to Temple Beth El's 2021 Annual Membership Meeting.

Agenda items include:

- ♦ Reports from TBE lay leadership and professional staff on the state of the synagogue and plans for the future.
- ♦ Presentation of Awards

The Fred Weisman Tikkun Olam Award

will be presented to

Julie Rosenberg and Belle Horowitz

This award, to be given annually, is in memory of Fred Weisman, z'l, our beloved member, whose life was filled with acts of caring, loving kindness, embodying the spirit of Tikkun Olam (world repair).

Teen Volunteer Award

will be presented to

Jessica Nirschel

This award, to be given annually, is to recognize a TBE teen for exceptional leadership and engagement at TBE who serves as a role model for others.

- ♦ Vote on the election of members to the Board of Trustees

Nominated for a first term ending in 2023

Debra Adler-Klein David Amsellem Sue Frieden Erica Pomerantz Eric Sigman

Nominated for a Second 3-Year Term Ending in 2024

Susan Greenwald Emily Klein Chris Maroc Irma Ross

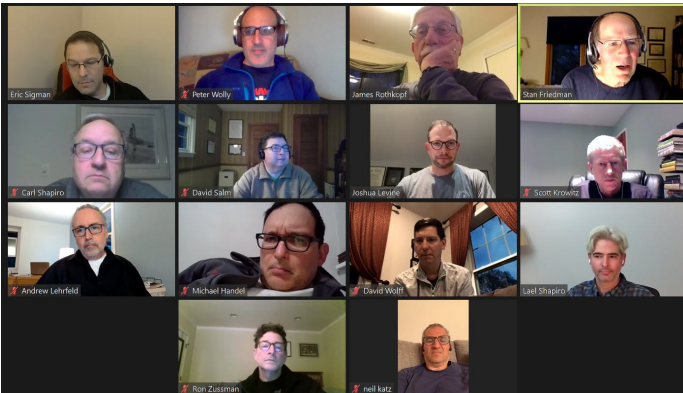
MEN'S CLUB

TBE MEN'S CLUB BEGINS HEARING MEN'S VOICES SESSIONS

The Temple Beth El Men's Club has begun a new program for its members called Hearing Men's Voices (HMV). The program was created by the Federation of Jewish Men's Clubs, an international umbrella organization whose mission is to involve Jewish men in Jewish life. FJMC is part of the Conservative/Masorti Movement.

HMV promotes intimacy among men through dialog that is rich and enjoyable. Aided by a facilitator, men meet in small groups to discuss common issues of concern and relevance to them.

The first session of HMV was held on March 11 and focused on "Navigating Family Relationships During COVID." With the advent of the pandemic, men have had to simultaneously work from home, help their wives, participate in their children's daily care and education, and assist with elder or disabled family members. For many men, this upheaval in their pre-COVID routines and responsibilities has often been overwhelming and frustrating, fueled by the anxiety over the virus itself.



Eleven TBE men that night talked about the rewards and challenges these new dynamics created for each of them. At times, the conversation was surprisingly open and honest, at other times, light and humorous.

There is a list of rules participants follow for each HMV session. Among them are: What is said in the room stays in the room; listen and don't act defensively; speak from the heart; keep your ego out of it.

The second session, held on May 4, was entitled, "Work & Worth," during which attendees discussed such questions as: How crucial is work to your self-definition? How do you measure success in your life? Does your work enhance or get in the way of your family relationships?

Due to the pandemic, sessions are held using Zoom breakout rooms rather than in person. A short survey taken by attendees showed an overwhelming desire to continue with the program and to see it expand among the men at TBE.

HOPE IN MOTION WALK & RUN



Although we will not be walking together again on this 26th anniversary of "The Bennett Cancer Center Walk," we will still be honoring the cause on **Sunday, June 6, 2021**. You have the option of walking or running the 5K alone, biking, using your treadmill or just imagining what the day could have been.

CANCER DOES NOT TAKE A HOLIDAY!

Please send your contribution to Stamford Hospital Foundation, 1351 Washington Blvd, #202, Stamford, CT 06902 or online at hopeinmotion.org.

On behalf of The Bennett Cancer Center and Team Temple Beth El, I sincerely thank you for your continued support and wish you excellent health.



Melanie Massell, Team Captain

**WE'RE ALL
IN THIS
Together**



TBE MEN'S CLUB SPONSORS

BLOOD DRIVE

**Sunday, May 9, 2021
9:00am - 2:00pm**

www.redcrossblood.org/give.html/donation-time

**Wednesday, May 26, 2021
1:00pm - 6:00pm**





Finally – Spring is here! The last few months have been very busy, and your \$36 Sisterhood membership is hard at work! Many thanks to the following people for their wonderful and successful events during the past two months.

- Our Sisterhood Book Club, led by Sisterhood Board member **Dora Salm**. The last book was *The Book of V.*, by Anna Solomon.
- Celebrating (Jewish) Women's History Month with Sisterhood Board member, **Naomi Sobel Marks**.
- Many thanks to **Judy Schneiderman**, **Steve Lander** and **Linda Rezak** for organizing and helping with the Passover Food Sale from W Caterers.
- A discussion on the political system in Israel and the Israeli election results thanks to TBE member **Pinchas Gross**.
- A lively discussion about Marc Chagall thanks to **Darby Cartun**.

As you know, a portion of the proceeds from the Passover food sales are used for Religious School education and Sisterhood programming. My personal thanks to Sisterhood Board members **Naomi Sobel Marks**, **Juli Harris**, **Dora Salm**, **Judy Schneiderman**, and **Donna Wolff** for their continued hard work and exciting ideas. A special Todah Rabah to **Carol Krim** who has so many wonderful ideas and **Mindy Rogoff** who is always so helpful!

Upcoming events in the Spring include:

SISTERHOOD SHABBAT, May 15 at 10:00am on Zoom

Join us for TBE's 2021 Sisterhood Shabbat - a unique and meaningful service led entirely by women! All TBE members and the community-at-large are welcome - women, men and children. Contact Leslie Heyison at lheyison@gmail.com or 646-354-3950 with any questions.

*All events are on Zoom. Please check the weekly Shabbat Announcements for event details.
Questions? sisterhood@tbe.org*

SISTERHOOD BOOK DISCUSSION

Join **Dora Salm**, TBE and Sisterhood member, as we discuss our next book *The Book of Lost Names*, by Kristin Harmel. Watch for the announcement with the exact date in June.

SISTERHOOD COOKBOOK! Free copy to member families!

Thank you to **Fran Ginsburg** for Sisterhood's beautiful cookbook full of delicious recipes from our members and friends. Sisterhood is delighted to offer each member family one cookbook, free-of-charge, as our gift to you for a limited time. Additional copies are \$6 each (sold at cost). Contact the main office for further details (203-322-6901). Additional thanks to **Beth Silver** and **Linda Rezak**!

We are always looking for new board members – please join us! We would love to have you join us or attend one of

our meetings to find out what we are about! Contact Sisterhood with your questions, new ideas, or to just talk. You can always find us at sisterhood@tbe.org.

On behalf of Sisterhood, looking forward to seeing you soon.

With joy and appreciation,
Karen Resnick | sisterhood@tbe.org

Passover Food Pick-Up & Sisterhood's New Cookbook



Please contact Sisterhood at sisterhood@tbe.org or feel free to call/email a Sisterhood board member with any comments. We love hearing from you and are always looking for volunteers!

Karen Resnick, President

203-536-3115, kmr925@sbcglobal.net

Judy Schneiderman, Treasurer

203-569-4969, jrs2125@optonline.net

Dora Salm, Secretary

203-461-8596, d_salm@yahoo.com

Juli Harris, Board Member

203-276-0589, jaharris99@aol.com

Naomi Sobel Marks, Board Member

203-273-4650, nsobel@hotmail.com

Paula Shulman, Board Member

203-461-9396, paulashulman51@gmail.com

Donna Wolff, Board Member

917-601-1878, donna@wolffmedco.com

PLANTING FOR THE FUTURE

This list represents increased gifts to the High Holiday Appeal or new gifts to the High Holiday Appeal of \$500 or more.

Regina Rosenbaum-Altman & Dennis Altman
 Carly Brinster & David Amsellem
 Beth & Ray Baer
 Burt Benjamin
 Devra Jaffe-Berkowitz & Parry Berkowitz
 Jill & Jeff Blomberg
 Matt Blumenthal
 Lisa Tannebaum-Brownstein & Don Brownstein
 Lori & Victor Bushell
 Leon N. Lapine Charitable Residuary Trust
 Malerie Yolen-Cohen & Jeffrey Cohen
 Laurel & Richard Cohen
 Marsha Colten & Robert Cohen
 Judy Dalgin & Norman Suchin
 Alix & David Eben
 Jon Eisenstein
 Carolyn Nadel-Farin & Phil Farin
 Beverly Frank & Moss Roberts
 Susan & Ralph Freyberg
 Sue Frieden
 Bob Friedman
 Leslie Glenn & Neil Katz
 Debby & Jack Goldberg
 Olga & Ronald Goldstein
 Myra & John Graubard
 Susan & Art Greenwald
 Karen & Scott Herckis
 Herb Kahan, z'l
 Jill & Mitchell Kaplan
 Mark Kaufman
 Beverly & Allen Kezsbom
 Jim Koplik
 Liz & Scott Krowitz
 Ellen & Arthur Laichtman
 Lisa & Jeff Manheim
 Melanie Massell
 Gwendolyn Morris
 Jill Swartz Nadel & Mitch Nadel
 Sandra & David Oberhand
 Cyndi & Adam Parker
 Linda & Joe Rothman
 Frieda & Gene Shapiro
 Rachel & Mark Sherman
 Judy & Rich Siegal
 Joyce & Lew Slayton
 Eileen & Fred Springer
 Caroline Temlock Teichman & Marc Teichman
 Jane Levine & Adam Tronick
 Kathy Cooperman & Elliot Tuckel
 Sharon & Jeff Turshen
 Dana & Carl Weinberg
 Lisa & Steven Wise
 Donna Wolff
 Sheryl & Dan Young
 Stephanie & Dan Zelazny

A TREE WAS PLANTED AT TBE FOR EACH INCREASED OR NEW GIFT. *THANK YOU!*

CANTOR'S CONCERT HONORING ALBERTO EYZAGUIRRE

Alberto's Message



Photo - Aviva Maller

Shalom to everyone!

I would like to thank the Board of Trustees who hired me 47 years ago for giving me the opportunity but, most of all, for believing in me. I extend my deepest gratitude to all the organizations, sponsors and families of Temple Beth El who have participated in this celebration.

Thanks to Rabbi Alex Goldman, z'l, and to my dear friend and guide, Hazzan Sidney Rabinowitz. A special thanks to Mr. Frank Rosner, z'l. I will always keep our wonderful memories close to my heart. I learned so much from him. A very warm greeting to my friend Eileen Rosner.

Thanks to Rabbi Hammerman, a person whom I admire. Thanks to Steve Lander for all these years of support. Thanks to Cantor Katie and Nefesh Mountain for the wonderful music.

Thanks to my working family, and please allow me to thank my family in Canada, Chile and here at home. To my immediate family, my wife Patty, my son Daniel, I have tried to be the best person I can be for you.

Finally, I recognize and know all the work and effort that went into putting this event together. I am humbled and privileged for your kindness.

Be well and be safe.



DONATE ONLINE
Go to: www.tbe.org/donate/

OPPORTUNITIES FOR GIVING

- ☒ Adult Education Fund
- ☒ Beth El Cares
- ☒ Beth Elders
- ☒ Debra Wald Goldberg Kindergarten Scholarship Fund
- ☒ Frank & Rose Rosner Memorial Fund (maintenance)
- ☒ General Fund
- ☒ Kiddush Fund
- ☒ Matthew Klein Memorial Sanctuary Garden Fund
- ☒ Emmet Manheim Playground Fund
- ☒ Mitzvah Garden Fund
- ☒ Music Fund
- ☒ Prayer Book Fund
- ☒ Project Ezra Fund
- ☒ Religious School Fund
- ☒ Reyut Shabbat Bag Fund
- ☒ Security Fund
- ☒ Solar Fund in memory of Norma Mann, z'l
- ☒ Youth Fund

DISCRETIONARY FUNDS

- ☒ Rabbi Joshua Hammerman's Mitzvah Fund
- ☒ Cantorial Soloist Katie Kaplan's Mitzvah Fund
- ☒ Hazzan Sidney Rabinowitz' Mitzvah Fund

ATTENTION PARENTS OF COLLEGE STUDENTS

Rabbi Hammerman would like to stay in touch with your child while he/she is away at college. Please send his/her e-mail address to Beth in the Temple office at adminassist@tbe.org. *Thank you!*



Get involved, please...

Help Wanted! In order to maintain our vibrant and dynamic community, the Fund-Raising Committee needs more members to support TBE and volunteer their skills and talents. Many of these opportunities ask for very small-time commitments. Please consider getting involved with the:

Annual Appeal | Temple Rock | Cantor's Concert

If you are interested in volunteering, please contact us and we will give you more information.

Thank you!

Art Laichtman
Fund-Raising Chair
aelaichtman@optimum.net

BETH EL CARES

Beth El Cares focuses on chesed and tzedakah by helping the poor and unfortunate through mitzvot, both in our synagogue and the greater Stamford community. We welcome volunteers! This is the work we are currently engaged in. If you are interested in volunteering in any of these endeavors, please contact the person listed.

Reyut (Friendship): Committed to serving the needs of those in our TBE community, including friendly visits, assistance with errands and transportation, Shabbat bag delivery to hospitalized patients. Contact Melanie Massell at reyut@tbe.org or 203-324-7190.

Project Ezra: Providing pre-shiva meals to the bereaved in the congregation. Contact Joy Katz at joyakatz@yahoo.com or 203-329-3359.

Serving the homeless: Helping prepare and serve food — you can do either or both — to the homeless at New Covenant Center in Stamford on the fifth Thursday of each month. Times are 2:30-4:15 pm and 4:15-5:30 pm. Contact Amy Temple at aetemple@optonline.net or 203-496-1309.

High Holiday Food Drive: Contact Sharon Turshen at 203-323-3872

Christmas dinners at local homeless shelters: Contact Amy Temple at aetemple@optonline.net or 203-496-1309.

SEEKING SHABBAT GREETERS WHEN WE RETURN

Do you like getting a warm "Shabbat Shalom" as you enter shul on Saturday morning?

Our greeting program has been extremely well received. To keep this program going, we need volunteer greeters like you.

For more information Contact Barry Strom at barrystrom@gmail.com

Thanks for helping make Temple Beth El a warm and welcoming place to be.

CELEBRATING A SPECIAL EVENT? COMMEMORATING A YAHRTZEIT?

Please consider sponsoring a VIRTUAL Kiddush, following Shabbat Services, or an Oneg Shabbat, following our Friday evening services.

Contact Steven Lander for all of the new, reasonably priced Kiddush options at 322-6901, ext. 304 or execdir@tbe.org.

PAY YOUR DUES ONLINE

Go to www.tbe.org/donate and click on member payments.

Questions? Contact Linda at 203-322-6901, ext. 302 or lindar@tbe.org.

WE ARE GRATEFUL FOR YOUR CONTRIBUTIONS

IN HONOR OF:

RABBI JOSHUA HAMMERMAN, KATIE KAPLAN, CANTORIAL SOLOIST, AND TBE EXECUTIVE COMMITTEE FOR THEIR SUPPORT DURING A DIFFICULT TIME

Ellen & Art Laichtman

THE BIRTH OF MAXWELL GESSE FISCHGRUND

Binnie Ditesheim, Susan & Richard Blomberg

THE BIRTH AND ADOPTION OF MARLOW IVY SELKOWITZ

Betsy & Peter Kempner

THE BIRTH OF SOPHIA CHARLOTTE ELLEN BREWER

Carol & Allen Krim

RELIGIOUS SCHOOL FUND

In memory of...

Gloria Aisenberg, z'l by Sandy & Alvin Siegartel

TREE OF LIFE

A leaf on the Tree of Life has been dedicated in honor of...

Sydney Brandt on becoming a Bat Mitzvah by Barbara and Warren Brand

ADULT EDUCATION FUND

In memory of...

Emanuel Rothman, z'l by Linda & Joe Rothman

MUSIC FUND

In memory of...

Doris Rothman, z'l by Linda & Joe Rothman

INFORMATION FOR YOU...

When making a donation an acknowledgement will be mailed to the designee for donations of \$10 or more. Donations of less than \$10 will be acknowledged only in the Bulletin. All donations will be published in the Bulletin unless you state that you wish to be anonymous.

CONTRIBUTING SHARES OF STOCK TO TEMPLE BETH EL

One way to boost your charitable contributions to Temple Beth El is to give shares of appreciated stock instead of cash. You do not pay any tax on your capital gain, and your charitable deduction is the shares' entire fair market value.

Beth El members may contribute shares of stock to satisfy their dues pledge, their annual fund pledge, and other contributions to the Temple.

After consulting your tax advisor, please contact the TBE office at 203-322-6901.

RABBI JOSHUA HAMMERMAN MITZVAH FUND

In memory of...

Ethel Sieman, z'l by Susan Plutzer

Gloria Aisenberg, z'l by Barbara Brafman & Larry Stein, Barbara & Paul Schultz, Andrea & Martin Levine

Sondra Gold, z'l by Andrea & Martin Levine

YOUTH PROGRAMING FUND

In memory of...

Bernard Kweskin, z'l, by Ilene & Jim Locker & Family

Rose Kweskin, z'l, by Ilene & Jim Locker & Family

CAPITAL FUND

In memory of...

Herbert Kahan, z'l by Stacey & Eliot Essensfeld

FRANK AND ROSE ROSNER MEMORIAL FUND

In honor of...

Steven Lander for his kindness and thoughtfulness by Phyllis & Harvey Walzer

MITZVAH GARDEN

In memory of...

Yetta Schwartz, z'l by Lori & Stuart Ratner

Annie Steinberger, z'l by Lori & Stuart Ratner

Ethel Rosenthal, z'l by Linda & Joe Rothman

SHABBAT BAG FUND

In memory of...

Harvey Novick, z'l, by Meryl & Hank Silverstein

EMMET MANHEIM PLAYGROUND FUND

In honor of...

Brooke Wolly becoming a Bat Mitzvah by Dana Horowitz & Peter Wolly, Judy & Brian Madden, Janice, Brian & Vivian Wolly, Aunt Marcia, Henry Wahl, Alma Cohen & Lee Suppe, Susan & Stan Brown, Anonymous, Lauren, Lesley & Aaron Levenson, Alison Patnick, Gilbert Family, Dana & Carl Weinberg, Gettler Family, Debbie & Terry Korth, Bee & Craig Bonheur, Tyler Kimball, Susan & Art Greenwald, Tobin Family, Barbara & Jeff Bograd, Bruce & Daniel Gillman, Binger Family, Brauna Gorin, Jeffrey Horowitz, Jim Rome, Susan & Charles Guthrie, Lori & Sam Singal, Carolyn Fitzgerald, Naomi & Richard Resnick, Myrna & Michael Ceccorulli, Maryellen Stearman

Gail & Peter Weinstein on the occasion of their 50th wedding anniversary by Fredda and Ed Goldstein



REMEMBERING OUR LOVED ONES



Gail & Jack Abrams **HARRY ABRAMS**
 Barbara & Stan Friedman **NATHAN ALIENTUCH**
 Judith & Robert Amster **DINA AND MAX AMSTER**
 Mindy, Jeff & Stephanie Hausman **JEAN & DAVID ANIS**
 Maxine & Jay Freilich & Family **KARL ARONSON**
 Maxine & Jay Freilich & Family **RICHARD ARONSON**
 Binnie Ditesheim **SOL ATKINS**
 Betty & Sherwin Baer **LEONARD BAER**
 Betty & Sherwin Baer **MARTIN BAER**
 Meredith & Eric Reuben **SADYE BAUM**
 Mitchell Nadel **BETH BENENETT**
 Carol & Wil Brewer **LESLIE BREWER**
 Rae Cohen **LENA & JULIUS COHEN**
 Sarah Darer **SUSAN DARER**
 Paula Shulman **SAMUEL DERMAN**
 Lori & Stuart Ratner **IRVING EDELSTEIN**
 Ronnie & Edward Fein **GEORGE FEIN**
 Karen Feinberg **BRUCE FEINBERG**
 Nancy & Brad Benjamin **LOIS AND HAROLD FINK**
 Tomskey Family **LOIS FINK**
 Maxine & Jay Freilich & Family **RUTH & SEYMOUR FREILICH**
 Catherine & Robert Friedman **ELDA FRIEDMAN**
 Welt Family **JOHN GAULT**
 Stanley Gershman **SARAH GERSHMAN**
 Barbara Malloy **THELMA GLAZER**
 Marlyn & Richard Agatstein **LENORE GOLD**
 Joanne & Marshall Goldberg **ARTHUR GOLDBERG**
 Lorelee & Phil Granowitz **IRVING GRANOWITZ**
 Myra & John Graubard **DAVID GRAUBARD**
 Denise & David Greenman **MARTIN GREENMAN**
 Steven Grushkin & Family **MERVIN GRUSHKIN**
 Leslie & Joe Heyison **DONALD HALPRIN**
 Linda Kopel & Family **LEON HECHT**
 Harriet & Fred Dulaney **LEWIS HELD**
 Betsy & Kevin Herold **PEARL HEROLD**
 Lori & Bruce Tobin **SAUL HERSHKOWITZ**
 Leslie & Joe Heyison **JACK HEYISON**
 Leslie Horowitz & Barney Horowitz **BARNETT HOROWITZ**
 Dana Horowitz & Peter Wolly & Family **BRUCE HOROWITZ**
 Jerry Jacobs & Family **MINNIE JACOBS**
 Evelyn & Bruce Kahn **GEORGE KAHN**
 Marsha Shendell & Family **DANIEL KAISER**
 Ann & Julius Lasnick **JULES KAPLAN**
 Jodi Maxner **EILEEN KLINE**
 Suzanne & Bob Kahn **JULIUS KOHN**
 Susan & Richard Blomberg **LOUIS KONIGSBACHER**
 Sharon & Steven Katz **FRANN KRAVATS**
 Samuel Kravitz **FRIEDA KRAVITZ**
 Samuel Kravitz **JACK KRAVITZ**
 Ruth Kwartin **SAUL KWARTIN**
 Bobbe & Ben Evans **DEBORAH LEPANE**
 Harriet & Sy Weinstein **HILDA LERNER**
 Barbara & Steven Rothstein **EVELYN & EDWIN LIEBERFARB**
 Myra & John Graubard **IRVING LUBITZ**
 Myra & John Graubard **REUBEN LUBITZ**
 Stephanie & Larry Sherman **MOLLIE AND JACOB MALIN**

Stephanie & Larry Sherman **ROBERT MALIN**
 Laura Markowitz **ROSALIE MARKOWITZ**
 Amy & Mel Bloomenthal **GLORIA MITCHELL**
 Sheila Wolfson Family **BEATRICE MIZEL**
 Barbara Brafman & Larry Stein **JEANETTE MOTT**
 Evelyn & Bruce Kahn **MARGOT NEU-EPSTEIN**
 Eleanor Mirne **ARTHUR NUSSDORF**
 Sandra & David Oberhand **EMANUEL OBERHAND**
 Rhoda & Sheldon Pearlman **LENA AND JOSEPH PEARLMAN**
 Robin Evans & Jeffrey Perry **LILY PERRY**
 Suzanne Pianin **RICHARD PIANIN**
 Francine & Robert Plansky **PAUL PLANSKY**
 Shelley & Brian Zielinski **ALICE RATZKER**
 Karen Resnick **DAVID RESNICK**
 Lori & Stuart Ratner **PAUL ROBBINS**
 Judy Schneiderman **RUTH & EMANUEL ROSENBERG**
 Joyce & Lewis Slayton **FRANKLIN ROSNER**
 Gail & Jack Abrams **MARGARET ROTH**
 Ruth Alpert **JULIA SACHS**
 Laurie & Dan Schacht **GARY SCHACHT**
 Barbara & Edward Drotman **MOLLY & MICHAEL SCHMALL**
 Mina Roth-Dornfeld **ALLYN SCHOTTENFELD**
 Carol Schwartz & Family **EDWARD SCHWARTZ**
 Marge Shameer **ALAN SHAMEER**
 Roslyn & Merritt Nesin **MORRIS SHAPIRO**
 Michelle & Greg Marrinan **PHYLLIS SIEGEL**
 Meryl & Hank Silverstein **STEVEN SILVERSTEIN**
 Joyce & Lewis Slayton **PAUL SLAYTON**
 Phyllis & Harvey Walzer **ESTHER SMALL**
 Marilyn & Mitch Sofer **GERTRUDE SOFER**
 Gail Solomon Hecht & Harvey Hecht **ESTELLE & SAMUEL SOLOMON**
 Magida Family **CELIA SOLOVE**
 Donna Wolff **RHODA STONE**
 Barbara Shapiro & Bruce Dennis **SADIE TEPPER**
 Sharon & Jeff Turshen **RICHARD TURSHEN**
 Ronnie & Ed Fein **LILY VAIL**
 Phyllis & Harvey Walzer **RUDOLPH WALZER**
 Barbara & Stan Friedman **LILLIAN WARSAW**
 Dana & Carl Weinberg **HANNAH WEINBERG**
 Shari & Sandy Weisz **PAMELA WEISZ**
 Debra & Stephen Pollack **ESTHER WINTHROP**
 Daniel Wolfson Family **GERTRUDE E. WOLFSON**
 Daniel Wolfson Family **STEPHEN WOLFSON**
 Nancy Wolfson **GERTRUDE E. WOLFSON**
 Betty & Sherwin Baer **CEIL WOLIN**

WE MOURN THE PASSING OF...

SONDRA GOLD, wife of Leo Gold
HOWARD GUNTY, father of Robin Evans
LOUIS ABBEY, father of Debbie Morgenthau
HERBERT KAHAN
RITA LODISE, sister of Peggy Kalter
GENIVIEVE WEINGRAD, grandmother of Randi Price
SYBIL ZEIDMAN, mother of Liz Krowitz
GUNTER (GUS) EBEN, father of David Eben
LYNN SCHACHER, sister of Susan Shapiro

IN MEMORY OF:

STRATTON ADAMS, z'l

Judith Ezrol

GLORIA AISENBERG, z'l

Peggy & Alan Kalter, Sheila & Alan Drogy, Mary C. & Alan Silberman, Marilyn & Mitch Sofer, Melanie Massell, Susan Frieden, Bobbe & Ben Evans, Beverly & David Stein, Barbara Aronica Buck, Evelyn & Bruce Kahn, Susan & Richard Blomberg, Susan & Carl Shapiro, Meryl & Hank Silverstein, Maxine & Jay Freilich & Family, Fener Family, Judy Schneiderman, Susan Schneiderman, Barbara & Warren Brandt, Suzanne & Norman Stone, Sharon & Steven Katz, Rhonna & Brian Rogol, Marsha Colten & Rob Cohen, Phyllis & George Heller, Rakowitz Family, Linda & Joe Rothman, Betsy & Peter Kempner, Laura Markowitz, Pamela Tinkham, Miriam & Michael Schechter, Barbara & Stan Friedman, Magida Family, Robin & Rick Redniss, Robin Evans & Jeffrey Perry, Beth, Pete & Jake Silver, Devra Jaffe-Berkowitz & Parry Berkowitz & Family, 7th Grade Class TBE Religious School, Marian Bauer, Ruth Kwartin, Barbara & Steven Rothstein, Debbie & Leon Shapiro & Family, Stacey & Eliot Essinfeld, Rae-ann & Scott Allen, Lorelee & Phil Granowitz, Hope & Peter Levensohn, Caryl & Peter Poser

SONDRA GOLD, z'l

Peggy & Alan Kalter, Herb Bregman, Robin & Al Vitale, Lustig Family, Mara & John Scoliard, Betsey & Arthur Selkowitz, Harriet & Sy Weinstein, Jane & Martin Crowell, Ruth Kwartin, Myra & John Graubard, Betty & Sherwin Baer, Rosalea & Dick Fisher, Rhea & Paul Plotnick, Doris & Ray Feinland, Lorelee & Phil Granowitz

HOWARD GUNTY, z'l

Peggy & Alan Kalter

JUDITH LAICHTMAN, z'l

Ellen & Art Laichtman, Betsy & Peter Kempner, Lois Stark & Gary Lessen, Wolly/Horowitz Family, Susan Frieden

GAYLA HALBRECHT, z'l

Ellie Skalet

GENEVIEVE WEINGRAD, z'l

Barbara & Warren Brandt, Linda Kopel

HERBERT KAHAN, z'l

Barbara Bluestone, Harley & Stephen Osman, Andersen Windows & Doors, Susan & Richard Blomberg, Nancy & Brad Benjamin, Peggy & Alan Kalter, Betsy & Peter Kempner, Harley & Stephen Osman, Lois Stark & Gary Lessen, Nancy & Sanford Koltun

PAUL JOSEPHSON, z'l

Peggy & Alan Kalter

SYBIL ZEIDMAN, z'l

Denise & David Greenman, Sharon & Jeff Turshen, Miriam & Steven Sosnick, Sharon & Steven Katz, Andrea & Eric Bass, Pamela Tinkham, Maxine & Jay Freilich, Barbara & Stan Friedman, Levensohn Family

SHIVA NOTICES AVAILABLE ON-LINE

Congregants who are looking for shiva information can now quickly look online instead of searching their inbox for the announcement or calling the synagogue office. Just go to TBE's website (www.tbe.org) and click "Shiva Notices" under the WHAT'S NEW menu.

Your Hometown Jewish Funeral Home.
Locally owned and operated by Tom Gallagher.

203.324.4494

Our family proudly serving your community for generations.

- Private Tahara Room
- Shomer Available

- Graveside Services
- Livestream Service Available

- International & Domestic Transportation
- Serving All Cemeteries



Thomas M. Gallagher
Owner & Funeral Director

104 Myrtle Avenue, Stamford, CT 06902 | 203.324.4494
info@sholomchapel.com | www.SholomChapel.com

HAVE YOU VISITED OUR WEBSITE?

www.tbe.org

Find out about the latest news and upcoming activities ... access our online membership directory ... register for events and make donations ... connect to TBE's Twitter and Facebook pages ... and much more.

DID YOU KNOW?

TBE offers free family membership for the first year to any member's child on the occasion of his or her marriage. For more information, contact Steve Lander at 203-322-6901, ext. 304.



MEMORIAL PLAQUES



Inscribe the names of your loved ones on a plaque for our Chapel wall along with a light to commemorate their *yahrtzeit* and *yizkor* observances throughout the year.

For details, contact Mindy at office@tbe.org or 203-322-6901, ext. 301.

THE TBE 100 MITZVAH PROJECT

The TBE 100 Mitzvah Project provides opportunities for congregants to honor TBE's centennial through the performance of *gemilut hasadim* (acts of loving kindness) that help charitable organizations in need of volunteers and non-monetary contributions.

Mitzvah Opportunities at the Schoke Jewish Family Service of Fairfield County

- **Work at the kosher food pantry** at SJFS. Distribute food during walk-in hours: Monday - Wednesday, 10:30 am-12:30 pm. Organize and maintain the pantry: Monday - Friday, 9 am - 4 pm.
- **Deliver meals and food items** to homebound clients. Time is flexible.
- **Participate in Mitzvah Monday** with your kids on the third Monday of each month (from 3 pm-5 pm). Bring kosher food items to the pantry and help stock shelves. GREAT for teens!
- **Visit a homebound client** for a "friendly visit" to alleviate loneliness. Time is flexible.
- **Donate food and non-food items.** Items can be dropped off at the TBE office or at SJFS.

If you are interested in doing one or more of these mitzvahs, please contact Jill Knopoff at (203) 921-4161. Don't forget to mention you're from TBE.

After completing a mitzvah, please send a note to mitzvah100@tbe.org with the name or names of the family members who participated, the mitzvah, and a photo if possible.

HOW WILL YOU ASSURE JEWISH TOMORROWS?



To create your legacy contact Steven Lander
execdir@tbe.org | 203-322-6901, ext. 304

TEMPLE BETH EL
350 Roxbury Road
Stamford, CT 06902
www.tbe.org



LIFE & LEGACY
Assuring JEWISH TOMORROWS
A program of the HANUKKAH MEMORIAL FOUNDATION

We Capture Your Precious Memories on Video...

Weddings ♦ Bar/Bat Mitzvahs

Proud to be the official TBE videographer

Tom was able to capture the spirit and joy of our B'nai Mitzvah service and party in a video we will always treasure. He was also a pleasure to work with from start to finish.

Jared Finkelstein

If you are looking for a videographer, look no further! Tom was a delight to work with and the finished product was incredible. He created separate videos of my daughter's Bat Mitzvah service and celebration and captured all aspects of the joy of the day.

Jill Teich

Thomas Pace, Jr. ♦ 203.335.0168
T & J Video Service

We also transfer home movies/video to DVD.

FETHI PHOTOGRAPHY

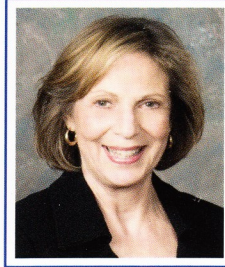
cell: 914-629-2204

fethic@me.com

www.fethiphotography.com

Experience working with TBE for over 25 years.

Ask your friends!



MADDY SHAPIRO

Sales Associate

REALTOR® of the Year 2011

203-940-5569 CELL

203-329-9792 HOME OFFICE

Maddy.shapiro@cbmoves.com



RESIDENTIAL BROKERAGE

Operated by a subsidiary of NRT LLC

www.maddyshapiro.com

Artists' Market

EXTRAORDINARY ART & FRAMING

American Crafts: Glass, Wood, Ceramics & Jewelry
Sophisticated Judaica: Mezuzahs, Menorahs, & More

Expert Frame Design and Manufacturing on Premises
"from the simple to the extraordinary"

Fine Contemporary Photography & Original Graphics
Specialist in M. C. Escher Original Masterworks

www.ArtistsMarket.com

163 Main Street, Norwalk

203.846.2550

✓+ Math Tutoring SAT & ACT Preparation

I. Jeff Turshen, Ph. D.

- All Levels of Math - Middle School, High School (Basic to Advanced Placement), and College
- Experienced Teacher - High School & College

References provided upon request

203-323-3872

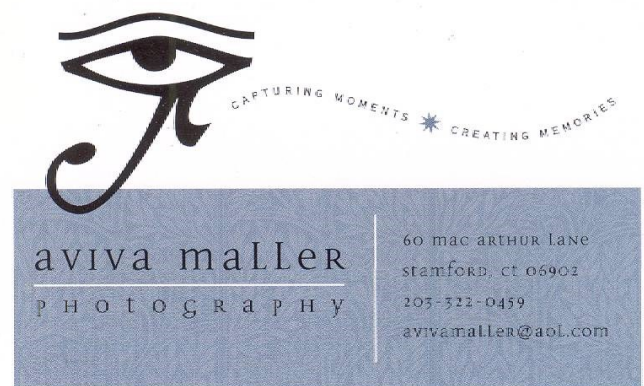
IJTurshen@aol.com



A Full Service Production Company:

- Event Decor
- Event Management
- Live Sound
- Video and Photography
- Rigging and Staging
- Webcasting
- Lighting
- Non-Profit Events
- Trade Shows and Product Launches
- A/V Equipment Rental
- Drone Imagery Services

25 Viaduct Road Stamford, CT 06907 P: (203) 517-4688
www.kpeventsgroup.com



aviva maller
PHOTOGRAPHY

60 mac ARTHUR Lane
STAMFORD, CT 06902
203-322-0459
avivamaller@aol.com

Check out our special website
Dedicated to TBE's event space

www.thebigeventspace.com

Please let your friends and business associates know how we can fulfill their celebratory and meeting needs.

ART GREENWALD

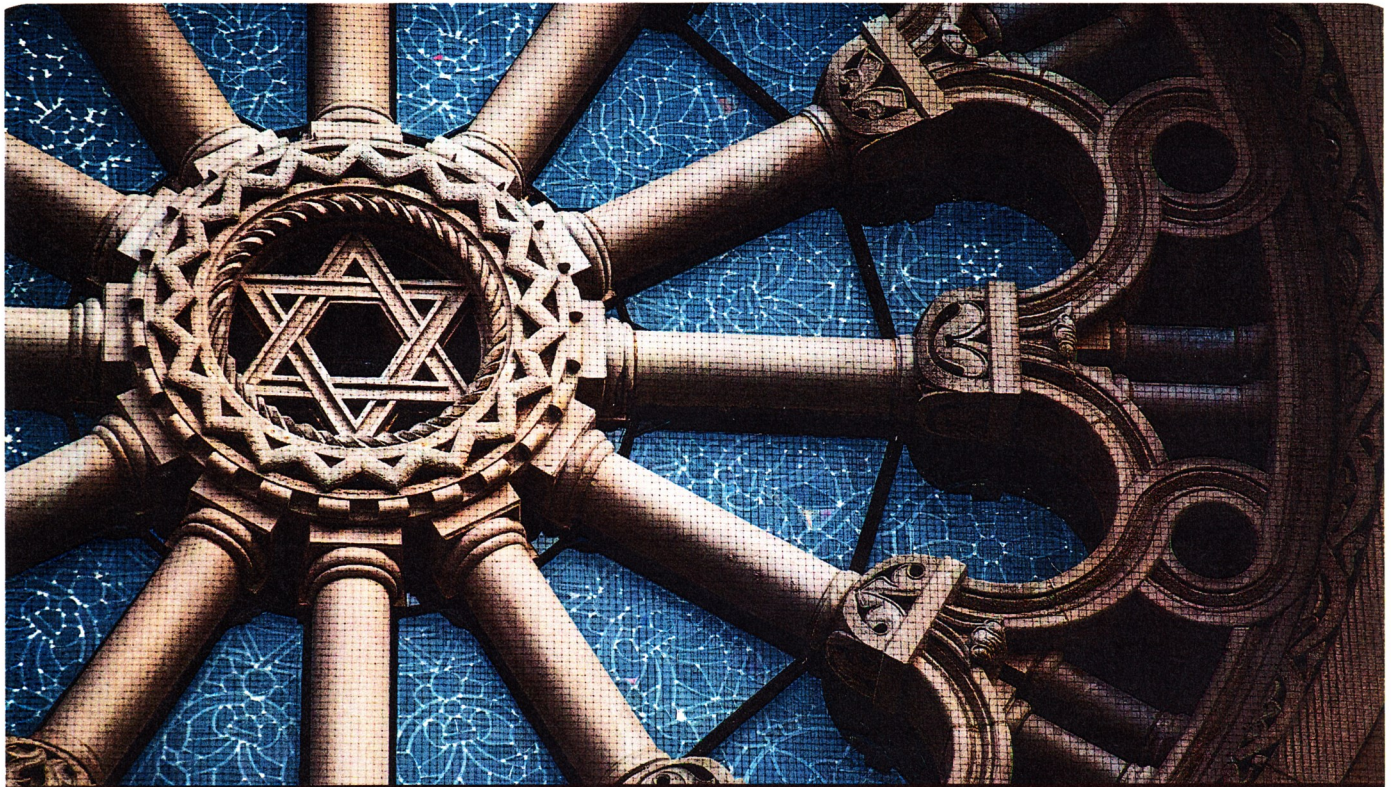
President

INTEGRATED PROTECTION SERVICES, LLC
320 Boston Post Road, Suite 140 DARIEN, CT 06820
Tel: 203.322.0772

WWW.INTEGRATEDPROTECTIONSERVICES.COM

**SYSTEMS AND SERVICES FOR SECURITY
AND FIRE PROTECTION**
SERVING CONNECTICUT AND NEW YORK
COMMERCIAL AND RESIDENTIAL





TAKING CARE OF EACH OTHER
is what community is all about.

WE'RE PROUD TO SERVE our community with personal, compassionate care.
As your Dignity Memorial® professionals, we're dedicated to helping families create
a unique and meaningful tribute that truly honors the heritage of the Jewish faith.

We invite you to contact us today to learn more.

Dignity®
MEMORIAL

✧ LIFE WELL CELEBRATED™ ✧

LEO P. GALLAGHER & SON

FUNERAL HOME

STAMFORD

203-327-1313 LeoPGallagherStamford.com