

Temple Beth El Bulletin

A Conservative, Inclusive, Spiritual Community

www.tbe.org

Volume 48 Issue 4 (bi-monthly)

July-August 2021

Tamuz/Av 5781

UY VEY! WHAT A YEAR! A YEAR AT TBE 2020-2021

JULY

Zoom services: Kabbalat Shabbat Services, Shabbat Services, Daily Minyan, D'verei Torah by: Rabbi Gerry Ginsburg, Susan Schneiderman, Hank Silverstein, Meryl Silverstein, Family Havdalah, Shababimbam on the Virtual Beach, Tisha B'Av Services, Food Trivia sponsored by Sisterhood, A Taste of Zadies, Men's Club Blood Drive, Sisterhood Board Meeting, Board of Trustees Meeting, Executive Committee Meeting, High Holiday Tasks Force Committee, Tzedek Committee Meeting, Membership Committee Meeting, Fund Raising Committee Meeting, Reopening Task Force Meeting

AUGUST



Zoom services: Kabbalat Shabbat Services, Shabbat Services, Shabbat-in-the-Round, Daily Minyan, D'verei Torah by: Beverly Stein, Rabbi Gerry Ginsburg, Shababimbam, BBQ & Barachu, Town Meeting with Senator Richard Blumenthal, Social Action Steering Committee, Sisterhood presents Nutrition with Jill Knopoff, TBE Hangout, Men's Club Town Hall - A Call to Arms, Men's Club Blood Drive, Sisterhood Book Discussion - *The World that We Knew*, Video Recording of High Holiday services, TBE 100 Anniversary Committee, Fund Raising Committee, Membership Committee, Reopening Task Force, High Holiday Task, Board of Trustees, Executive Committee

SEPTEMBER

Zoom services: Kabbalat Shabbat Services, Shabbat Services, Daily Minyan, D'verei Torah by Hank Silverstein, Rabbi Gerry Ginsburg, Shabbat-in-the-Round, Bar Mitzvah: Brandon Nadel, Video Recording of Rabbi Hammerman's High Holiday sermons, ShaBaBimBam, Selichot Night with the Conservative Movement, Rosh Hashanah Services, Drive-By Shofar and Tashlich, Visit the Ark in TBE's Sanctuary, Kol Nidrei, Yom Kippur Services, Meditation and Guided Imagery with Katie Kaplan, Cantorial Soloist, Evening with Joel Chasnoff, Champagne Pick-up, 100th Anniversary Celebration, High Holiday Food Drive, The Call of the Shofar with Rabbi Gerry Ginsburg, Men's Club Blood Drive, TBE Hangout, High Holiday Food Pick-up, High Holiday Mahzor Pick-up, Reopening Task Force, Fund Raising Committee, Social Action Committee, Reopening Task Force, High Holiday Task Force, Board of Trustees, Board of Trustees, Executive Committee



OCTOBER



Zoom services: Kabbalat Shabbat Services, Shabbat Services, Daily Minyan, Sukkot, Shemini Atzeret and Simchat Torah Services, Simchat Torah Hakafot in TBE's Driveway, D'verei Torah by Hank Silverstein, B'nai Mitzvah: Sydney Kassel, Camryn Laichtman, Richard Baer, ShaBaBimBam, Build the Sukkah, Lulav and Etrog sale, Sukkah Decorating Party for Families, Families Eat in the Sukkah, Sukkah Hop at TBE's Sukkah, Meditation and Guided Imagery with Katie Kaplan, Cantorial Soloist, Coffee and Pirkei Avot with Rabbi Gerry Ginsburg, Emmet Manheim Playground Dedication, Men's Club Blood Drive,



Candy Trivia sponsored by Sisterhood & Men's Club, Sisterhood Clothing Drive, B'nai Mitzvah 2021 Parents Meeting, Reopening Task Force, Fund Raising Committee, Men's Club Scotch and Torah, Men's Club Meeting, Board of Trustees Meeting, Executive Committee Meeting

TEMPLE BETH EL - BOARD OF TRUSTEES**EXECUTIVE COMMITTEE**

Lisa Manheim, President	917-690-2712
Carl R. Weinberg, Immediate Past President	203-322-8675
Scott Krowitz, First Vice President	917-902-1447
Stan Friedman, Vice President	203-322-0416
Devra Jaffe-Berkowitz, Vice President	203-978-1113
Arthur Laichtman, Vice President	203-461-8223
Christopher Maroc, Vice President	914-215-2025
Julie Rosenberg, Vice-President	203-975-8880
Lael Shapiro, Vice President	203-273-8380
Daniel Young, Vice President	203-975-1990
Robert S. Cohen, Treasurer	203-329-9622
Susan Frieden, Assistant Treasurer	203-869-4282
Emily Klein, Secretary	347-901-0228

ADVISORS

Dana L. Horowitz	203-321-0018
Mia M. Weinstein	203-595-0528

TRUSTEES

Debra Adler-Klein	203-253-1664
David Amsellem	203-832-4335
Lori Bushell	203-962-2974
Jeffrey Cohen	203-358-9911
Kahla Cooper	203-554-7888
Jon Eisenstein	203-321-8369
Leslie Glenn	203-273-7215
Susan Greenwald	203-322-0771
Michael Handel	203-981-1987
Erica Pomerantz	203-223-7359
Irma Ross	203-246-4880
Barbara Rothstein	203-614-8053
Judy Schneiderman	203-569-4969
Eric Sigman	203-535-1323
I. Jeffrey Turshen	203-323-3872

SISTERHOOD PRESIDENT

Karen Resnick	203-536-3115
---------------	--------------

MEN'S CLUB PRESIDENT

Josh Levine	203-276-4935
-------------	--------------

PAST PRESIDENTS

Gordon Brown	203-276-8688
Rosalea Fisher	203-323-1449
Fred S. Golove	203-322-0295
Alan Kalter	203-322-8220
Peter K. Kempner	203-968-8079
Mark Lapine	203-329-9879
Gary P. Lessen	203-322-7617
Sylvan D. Pomerantz	203-968-0605
Brian Rogol	212-531-8203
Eileen H. Rosner	203-461-0506
Mia M. Weinstein	203-595-0528

WHERE TO FIND IT

Joshua Hammerman, Rabbi.....	Page 3
Katie Kaplan, Cantorial Soloist.....	Page 3
Sidney Rabinowitz, Hazzan Emeritus.....	Page 4
July-August Service Schedule	Page 5
TBE Clubs.....	Page 7
Sisterhood	Page 10 & 11
Campaign for Temple Beth El	Page 14 & 15
Life & Legacy	Page 16
Covid-19 Essays	Page 17
Beth El Cares	Page 18

COMMITTEE CHAIRPERSONS**Board of Education**

Kahla Cooper.....	203-554-7888
-------------------	--------------

Empty Nesters

Sue and Carl Shapiro.....	203-353-0657
---------------------------	--------------

Facilities

Lael Shapiro.....	203-273-8380
-------------------	--------------

Finance

Robert S. Cohen	203-329-9622
Susan Frieden.....	203-869-4282

Fund Raising

Arthur Laichtman.....	203-461-8223
-----------------------	--------------

High Holy Days Task Force

Devra Jaffe-Berkowitz	203-978-1113
-----------------------------	--------------

High Holy Days Food Drive

Sharon Turshen.....	203-323-3872
---------------------	--------------

Human Resources

Carl Weinberg	203-322-8675
---------------------	--------------

Marketing and Communications

Stan Friedman.....	203-322-0416
--------------------	--------------

Membership Committee

Chris Maroc.....	914-215-2025
------------------	--------------

Mitzvah Garden

Harriet Weinstein.....	203-353-8873
------------------------	--------------

Project Ezra

Joy Katz	203-329-3359
----------------	--------------

Reyut Committee

Melanie Massell	203-324-7190
-----------------------	--------------

Ritual Committee

Devra Jaffe-Berkowitz	203-978-1113
-----------------------------	--------------

Social Action Committee

Julie Rosenberg.....	203-975-8880
----------------------	--------------

Tzedek Committee

Julie Rosenberg.....	203-975-8880
----------------------	--------------

Immigration Task Force

Belle Horwitz.....	203-968-1296
--------------------	--------------

OUR STAFF IS MOST EAGER TO ASSIST YOU

Monday - Thursday, 9am - 5:00 pm | Friday, 9am - 2:00pm

Phone: 203-322-6901 Fax: 203-322-0532

Joshua Hammerman, Rabbi (rabbi@tbe.org)	ext. 307
Katie Kaplan, Cantorial Soloist (cantor@tbe.org)	ext. 315
Sidney G. Rabinowitz, Hazzan Emeritus (hazzan@tbe.org)	ext. 309
Steven Lander, Executive Director (execdir@tbe.org)	ext. 304
Lisa Gittelman Udi, Director of Congregational Learning (eddir@tbe.org)	ext. 305
Rabbi Gerry Ginsburg, Associate Rabbi (rabbiginsburg@tbe.org)	ext. 300
Jami Fener, Engagement Coordinator (engagement@tbe.org)	917-680-9413
Linda Rezak, Bookkeeper (lindar@tbe.org)	ext. 302
Mindy Rogoff, Temple Secretary (office@tbe.org)	ext. 301
Alberto Eyzaguirre, Facilities Manager (maint@tbe.org)	ext. 314

ON ONE FOOT

The Moral Compass



Perhaps the most important speech given over the past month wasn't even delivered. It was set to be given by Yair Lapid, now the Foreign Minister and alternate Prime Minister of Israel. Lapid was doggedly persistent in somehow finding a way to scotch tape eight disparate parties into a government, against all odds; a move that changed the course of Israel's history – and Jewish history as well.

He didn't deliver his speech at the Knesset on the day of the government's confidence vote, because he had just seen his comrade Naftali Bennett shouted down repeatedly by hecklers determined to grind the wheels of democracy to a halt.

Here's some of what he planned to say to those hecklers in the hall:

"We are not enemies. Even the most strident opinions, even the most heated arguments, will not turn us into enemies. We will not let extremists destroy our ability to speak to one another and to work together for the good of the country."

In subsequent speeches, Lapid pledged to repair ties with Jews in the Diaspora, many of whom have felt alienated from Israel over recent years. "The support of Christian evangelicals and other groups is important and heartwarming," he said. "But the Jewish people are more than allies; they are family. Jews from all streams – Reform, Conservative and Orthodox – are our family. And family is always the most important relationship and the one that needs to be worked on more than any other."

It has been so long since we have heard such sentiments. And so, for those of you who have felt such alienation, from Israel, from the established Jewish community, from Judaism itself, it's now OK to jump back into the water.

Oh, there will be things that Jews will still disagree about. That's what makes us Jews. And the wounds opened by the recent fighting in Gaza, which engulfed us all and, exposed dangerous fault lines and caused a dramatic increase in anti-Semitic attacks – there's a lot of damage that will need to be undone. But as this new government takes root, we'll begin to notice some good things. We'll begin to see a moral compass re-emerge.

That's exactly what happened when several thousand right wing Jews paraded through Jerusalem with Israeli flags shouting "Death to the Arabs," just two days after the new government was sworn in. To that provocation, Lapid responded, "It is incomprehensible how one can hold an Israeli flag in one's hand and shout 'death to Arabs' at the same time...This is not Judaism and this is not Israel."

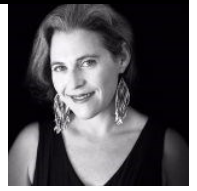
In a recent Times of Israel column, David Horovitz described the amazing historical moment we've reached:

Never in the history of this country have rightists, leftists, centrists and Arabs agreed to stake out common ground,

Continued on page 24...

KATIE KAPLAN, CANTORIAL SOLOIST

Wild Geese by Mary Oliver



You do not have to be good.
You do not have to walk on your knees
for a hundred miles through the desert
repenting.

You only have to let the soft animal of your body
love what it loves.

Tell me about despair, yours, and I will tell you mine.
Meanwhile the world goes on.

Meanwhile the sun and the clear pebbles of the rain
are moving across the landscapes,
over the prairies and the deep trees,
the mountains and the rivers.

Meanwhile the wild geese, high in the clean blue air,
are heading home again.

Whoever you are, no matter how lonely,
the world offers itself to your imagination,
calls to you like the wild geese, harsh and exciting -
over and over announcing your place
in the family of things.

This past year has certainly pushed us all to varying degrees of breaking, frustration, loneliness, and examination of the lives that we lead. This poem, Wild Geese, by Mary Oliver illuminates the steadfast and constant presence of nature and the continuation of life despite challenging times. As we launch into summer, see more people vaccinated, and start to reconvene in community with loved ones, this poem encourages us to remember that no matter the struggles we face, we belong in this world and there is a place in it for us.

This next period of re-entry and acclimation into new routines and protocols for picking up and moving forward will not meet everyone in the same place. While many are ready and eager to get back to a perceived sense of "normal," many others are struggling to move forward through deep personal, physical, and spiritual losses of the past year. While our technology has been an incredible tool for connection, it doesn't eliminate the fact that over the past year we've spiritually suffered a loss. In the words of Mary Oliver, many have tried "to be good," have "walked on our knees," and fought to show up and be present for one another, yet how often have we "let the soft animal of our body love what it loves?" How often have we reached inward with self-compassion and grace during what has been a difficult year?

I share this Mary Oliver poem with you as a beacon of hope and as a reminder that it is good, sacred, and holy to be gentle with ourselves as we emerge. As the flowers bloom, the days grow longer, and we begin to rebuild our trust in our collective health and safety. We, like the wild geese, are heading home again and announcing our place in the family of things. Whenever you are ready, we are here for you and we will eagerly welcome you home.

Katie Kaplan, Cantorial Soloist



DEDICATION OF NEW MEMORIAL BOARDS

We will be adding two new Memorial Boards in the upstairs hallway, next to the new elevator.

If you are interested in dedicating one of the new boards, please contact Steven Lander at execdir@tbe.org or 203-322-6901, ext. 304.

From Alberto and Family



a million thanks

I want to thank everyone for the great messages full of love and good wishes. Special thanks for all the donations for our trip - gifts we will enjoy very much.

**With love,
The Eyzaguirres**

THE HAZZAN'S VOICE

Flory Jagoda, a guitarist and accordionist, brought the traditional ballads of her Sephardic ancestors and the melodies of the Ladino language to American audiences through performances and recordings.



The National Endowment for the Arts named her a National Heritage Fellow in 2002.

Flora Papo was born December 21, 1923 in Sarajevo, where her father was a nightclub musician. After her parents divorced, Flora lived with her mother and mother's family in Vlasenica.

She moved with her mother and stepfather to Croatia and had several years of musical and dance training in Zagreb.

Her life became one of uncertainty after the Nazi invasion of Yugoslavia in April 1941. Using fabricated documents provided by her stepfather, and a non-Jewish name, she left Zagreb by train bound for the Adriatic seaport city of Split, occupied by Italy.

Carrying a single suitcase and her accordion, she entertained fellow passengers by playing Serbo-Croatian melodies. "My father said, 'Don't talk. Just play the Accordion!'"

Of more than 82,000 Yugoslavian Jews, an estimated 15,000 survived the war. More than 40 members of her family perished.

After the war, she found work as a translator helping the Americans at a salvage depot in Bari. There she met an Army surgeon, Harry Jagoda, who she married in 1945, fashioning a wedding dress from the silk of a parachute.

In the early life marked by war, persecution and dislocation, Mrs. Jagoda found comfort in her heritage and the teaching passed down by her maternal grandmother - her "Nona" in the mountain village of Vlasenica.

In addition to Sephardic Jewish culture, her Nona taught her the centuries-old Ladino language, now a rarely spoken Castilian Spanish dialect. She also passed on the legend of "LaYave," the metaphorical key guarded by Sephardim that would one day allow them to return to their ancestral homes after being expelled from the Iberian Peninsula in 1491 by orders of Spain's Catholic monarchs.

After surviving an interment camp during the Holocaust, Mrs. Jagoda settled in Northern Virginia in the 1940s, 20 minutes from my home. Calling upon her memories of her Nona, as well as her considerable musical skill, she became a preeminent flame keeper of her Ladino language.

Starting in the 1960s, she and a circle of musical friends began hosting lamb roasts and other gatherings where they sang traditional Ladino music. Over the years she became a regular at local folk festivals, eventually touring the United States and Europe. She recorded five albums, released her own songbook and composed a Hanukkah song *Ocho Kandelikas (Eight Little Candles)* that was recorded by singers.

This song was a favorite of our Temple Beth El Junior Choir, which they sang at the Stamford Government Center during Hanukkah.

Flory Jagoda died January 29, 2021 at age 97. Her daughter Lori, my daughter's friend, announced her mother's death to the community, Baruch Dayan haEmet, a true loss to the Jewish and music community.



Hazzan Sidney Rabinowitz



SHABBAT AND FESTIVAL SERVICES



Shabbat morning services will be held on Zoom. Friday Night Services will be held on Zoom and in person.

JULY

Friday, July 2

Kabbalat Shabbat 7:00 p.m.
Rabbi Gerry Ginsburg, D'var Torah

Shabbat, July 3

Shabbat Service 9:00 a.m.
Rabbi Gerry Ginsburg, D'var Torah

Friday, July 9

CAMP SHABBAT

Kabbalat Shabbat 7:00 p.m.
Rabbi Gerry Ginsburg, D'var Torah

Shabbat, July 10

Shabbat Service 9:00 a.m.
Amanda Geffner, D'var Torah

Friday, July 16

Kabbalat Shabbat 7:00 p.m.
Rabbi Gerry Ginsburg, D'var Torah

Shabbat, July 17 - Erev Tisha B'Av

Shabbat Service 9:00 a.m.
Tisha B'Av Service 9:30 p.m.
At Congregation Beth El, Norwalk

Friday, July 23

WINE & CHEESE SHABBAT

Sponsored by TBE Men's Club
Kabbalat Shabbat 7:00 p.m.

Shabbat, July 24

Shabbat Service 9:00 a.m.

Friday, July 30

Kabbalat Shabbat 7:00 p.m.
Rabbi Gerry Ginsburg, D'var Torah

Shabbat, July 31

Shabbat Service 9:00 a.m.

AUGUST

Friday, August 6

Kabbalat Shabbat 7:00 p.m.

Shabbat, August 7

Shabbat Service 10:00 a.m.

Friday, August 13

BBQ and BARACHU 5:00 p.m.

Sponsored by TBE Sisterhood

Kabbalat Shabbat 6:30 p.m.

Shabbat, August 14

Shabbat Service 10:00 a.m.

Friday, August 20

Kabbalat Shabbat 7:00 p.m.

Shabbat, August 21

Shabbat Service 10:00 a.m.

Friday, August 27

Kabbalat Shabbat 7:00 p.m.

Shabbat, August 28 - First In-Person Service

Shabbat Service 10:00 a.m.
Selichot Service 8:45 p.m.
with Conservative Synagogue of Westport
and Congregation Beth El
(to be held at Conservative Synagogue of Westport)

WOULD YOU LIKE TO BE A GABBAI?



Training available!

Please contact Rabbi Hammerman
at rabbi@tbe.org.



SAVE THESE DATES



CAMP SHABBAT

Where the adults are the campers!
Friday, July 9 at 7:00pm



WINE & CHEESE SHABBAT

Wine Tasting sponsored by the TBE Men's Club

SAVE THIS DATE



TBE's Annual BBQ and BARACHU

Friday, August 13, 2021

Sponsored by TBE Sisterhood

Kosher BBQ: 5:00pm Services: 6:30pm
Rain or Shine

MAZAL TOV TO...

Jami and Scott Fener on the birth of a daughter, Talia Evelyn.

Lieba and Steven Lander on the birth of a grandson, Lucas Jamison born to Karen and Kevin Lafferty.

Linda and Joe Rothman on their granddaughter, Lesley, daughter of Michelle and Adam Wilen, becoming a Bat Mitzvah.

Caroline Temlock Teichman and Marc Teichman on the B'nai Mitzvah of three grandchildren: Shaina Eliana, daughter of Jessica Temlock Fields and David Fields; Alexis Lauren, daughter of Elysse Teichman & Adam Teichman; Andrew Jordon, son of Lori Teichman Ross and Marc Ross.



Share your family's simcha (engagement, marriage, birth, Bar or Bat Mitzvah of a child or grandchild) and other joyous event. Just contact the TBE office at office@tbe.org or 203-322-6901, ext. 301.

HONORABLE MENSCHEN TODAH RABAH TO OUR TORAH READERS!

JORDAN ALEXANDER ☆ JUDY ARONIN
RABBI GERRY GINSBURG ☆ MICHAEL HOLDOWSKY
KATIE KAPLAN, CANTORIAL SOLOIST
AVIVA LEVAVI ☆ PETER LEVAVI ☆ JOSH LEVINE
WESLEY LEVINE ☆ BERT MADWED ☆ NAOMI MARKS
JULIE ROSENBERG ☆ SUSAN SCHNEIDERMAN
LAEL SHAPIRO ☆ MARGARET SHAMEER
MERYL SILVERSTEIN ☆ HARRISON TRONICK

THANK YOU FOR SPONSORING THE ONEG-TO-GO

HAYLEY and JOSH LEVINE
JANE LEVINE and ADAM TRONICK

THANK YOU FOR SPONSORING THE SHABBAT ANNOUNCEMENTS

NATALIE and JEFFREY ALEXANDER
HAYLEY and JOSH LEVINE
JANE LEVINE and ADAM TRONICK

YOUNG FAMILIES

TBE ShaBaBimBam

A Shabbat program for families with children 5 and younger (older siblings welcome!)



Shabbat Mornings 11:00am



Led by Natasha Fenster
and Steve Epstein!

July 17, 2021
August 21, 2021
September 18, 2021
October 16, 2021
November 13, 2021
December 4, 2021
January 8, 2022
February 5, 2022
March 5, 2022
April 2, 2022
May 7, 2022
June 4, 2022

Questions?

Contact Jami Fener
youngfamilies@tbe.org

Temple Beth El
350 Roxbury Road, Stamford, CT
203-322-6901 | www.tbe.org
[facebook.com/youngfamiliesTBE](https://www.facebook.com/youngfamiliesTBE)

We will meet on Zoom at
first, but hope to be able
to meet in person soon!

Zoom Meeting:
<https://zoom.us/j/93618704145>
Meeting ID: 936 1870 4145
Passcode: 461750

JAMI FENNER, ENGAGEMENT COORDINATOR



TBE Clubs is a TBE initiative that engages small groups of congregants in meaningful activities that fuel the body and inspire the soul. Equally important, TBE Clubs act as a way by which congregants can pursue their passions and find new friends within the synagogue community.

Here is a current list of available clubs, which can also be found on the TBE website at: <https://www.tbe.org/tbe-clubs/>. TBE members interested in joining a club should reach out to the club's point person for more information. If you have any questions or have an idea to start your own club, new clubs will be forming in Fall 2021 - more information coming soon!

TBE MUSICIANS & SINGERS

This intergenerational club will bring together musicians and singers of all ages and experience levels to participate and hopefully perform at the synagogue when the COVID pandemic is behind us. The theme of this group is "Jews that Rock," performing material by Jewish artists, such as Carol King and Billy Joel. The point person, Paul, is a drummer, so he is looking for a bass, guitar, and keyboard player to create the core band. Other club members are invited to sing and/or rotate through different instruments.

Point Person: Paul Weinstein at drpaulweinstein@gmail.com or (203) 219-4191

HEART-TO-HEART

This group is focused on providing support for those dealing with or suffering from grief and loss. We will offer a safe space for listening and sharing, and provide tools to help members move through difficult situations and feelings. The group's intention is to guide members in reclaiming their light inside. Heart-to-Heart will meet over Zoom for now, twice a month, every other Wednesday at 7:00 pm.

Point Person: Hope Stanger HHC, Trauma Therapist and Holistic Health Counselor, at theholisticempire@yahoo.com or (203) 357-0242; or Pamela Tinkham LCSW, Trauma Therapist and Yoga Therapist, at pamelatinkham@gmail.com

BROADWAY AND MOVIES REVISITED

Join other theatre and film lovers to watch movie versions of Broadway shows, as well as films of the past and present. We will compare and discuss shows beyond entertainment value, including their messages as reflections of society, history, and culture. The club will meet monthly over Zoom for the time being.

Point Person: Barbara Rothstein at brothstein320@gmail.com or (203) 614-8053; Carl Shapiro at cshapiro@optonline.net or (203) 273-1968

MITZVAH GARDEN CLUB

The club will provide its members the opportunity to plant and grow their own vegetables and/or flowers in TBE's very special Mitzvah Garden. Members will meet individually or as a family

and each will be able to plant and care for their own bed(s) with the produce/flowers of their choosing. Beds are still available so please reach out soon!

Point Person: Meryl Silverstein at merylandhank@optonline.net or (203) 588-0026



HIKING AND WALKING CLUB

Club members will explore the beautiful venues and trails that are within a one-hour drive of TBE. Members will choose the hikes/walks in which they are interested, considering length, elevation and level. Meetings will take place by Zoom, with hikes and walks in-person.

Point Person: Leslie Heyison at lheyison@gmail.com or (646) 354-3950

TBE STEMers

For those interested in learning and teaching others in the field of science, this is the club for you. We will discuss Jewish topics of interest, such as medical and research ethics, as well as present on individual areas in which we specialize. Meetings will take place monthly over Zoom for now. On occasion, we will also organize lectures and speakers for the congregation.

Point Person: Fran Ginsburg at ginsstamf@gmail.com or (203) 979-9570

TBE's HOPE IN MOTION TEAM

June 6, 2021

Thank you to all of the congregants who supported our Team this year.

BEST YEAR EVER!



Delivered at TBE's Annual Meeting - May 26, 2021

The Rose that Grew from Concrete, by Tupac Shakur

*Did you hear about the rose that grew
from a crack in the concrete?
Proving nature's law is wrong it
learned to walk without having feet.
Funny it seems, but by keeping its dreams,
it learned to breathe fresh air.
Long live the rose that grew from concrete
when no one else ever cared.*

Welcome to the 2021 Temple Beth El Annual Meeting. This has been a year where Temple Beth El grew roses from concrete, where we found ourselves in dire situations --a global pandemic, a fractured justice system - yet we thrived just like the rose that flourished against all odds.

There is so much to talk about, so many big and small triumphs this year, as well as some challenges that we are still working to overcome. But to me, tonight is about celebrating our achievements. There were many, but in the interest of getting to the ice cream sandwiches at the end of the meeting, I will highlight a few, along with the leaders who led us to this point.

A year ago yesterday, George Floyd was killed in Minnesota, but we felt the reverberations here in Stamford. My dear friend Julie Rosenberg felt them acutely, and decided she couldn't simply sit back while the crack in the concrete grew into a chasm. With the collaboration of Rabbi Hammerman, a group of committed congregants, and Rev. Dr. Michael Christie of the Stamford Union Baptist Church, Julie initiated the Tzedek Committee and a partnership with the church. With help from Dana Horowitz, VP of Social Action, they led this committee through a year of thinking, learning, talking, and even cooking. Dana and Julie, thank you for leading this charge - we look forward to this continued work in the coming year.

Then last fall, we faced our first High Holidays (and hopefully our last) without each other in person. While we worried about our friends who were alone, Rabbi Hammerman and Cantor Katie, along with some committed congregants like Devra Jaffe-Berkowitz and Eileen Rosner, created high-quality, inclusive, interactive services that were the best possible substitute for being together. And that simply set the tone for the rest of our spiritual year, as we held Zoom services every Shabbat and a minyan each day online, with a growing and committed following. These services allowed us to chat, share ideas and memories, and pray together, all from the comfort of our own homes. I admit that it might be hard to put my big girl clothes on for services after spending most of this year in sweats. Thank you Rabbi and Cantor for working so hard to make us all feel spiritually connected this past year. I also want to thank Lisa Gittelman-Udi, who has worked through the challenges of this year to keep our Religious School students engaged both in person and on Zoom with creative

programming like a Purim scavenger hunt and Hanukkah gift bags that were delivered to each Religious School family.

In working towards our goal of keeping our congregants engaged during this past year, Chris Maroc rose up to meet this challenge, conceiving the idea of TBE Clubs that would allow our congregants to come together around their common interests, such as Broadway, biking, hiking, and even grief. Thank you to Chris, the VP of Membership and Jami Fener, who is home with her brand-new baby. We are so appreciative of your efforts!

This year, we learned how important technology is to us...and how difficult it can be to navigate it. Stan Friedman and Steve Lander dedicated countless hours to researching how to best keep everyone connected throughout the past year, whether it was for Shabbat services, B'nai Mitzvah, the Cantor's Concert, Temple Rock and every other event that appeared on Zoom. They steered us through all the technical challenges, mostly with a sense of humor but always with relentless commitment to figuring it out. Thank you, Stan and Steve, for being our tech "roses" this year.

Remember those doors you walked through to get here tonight? Well, don't get used to them. They are being replaced this summer with beautiful glass doors, among a number of other improvements we are making to the building, including putting in an elevator, replacing the rug in the lobby and social hall, and a complete renovation of the downstairs bathrooms. At the helm of these projects has been Lael Shapiro and Sylvan Pomerantz, who have given countless hours and energy to make these projects happen.

At the start of this year, the finance committee created what we considered a "doomsday budget," anticipating a rough financial year in the face of a global pandemic. This is where you, our congregation, really rose through the concrete. We not only surpassed our doomsday budget, we had a banner year. You stepped up to make this one of our most successful financial years ever, through your generosity to our Appeal, Temple Rock, and the Cantor's Concert. Thanks to Art Laichtman for his leadership as VP of the Fundraising Committee during a particularly challenging year. And of course, thank you to Rob Cohen, our treasurer who keeps us solvent and also provides the Board with a plethora of new vocabulary words at every meeting.

The Reopening Task Force is a committee that we never wanted to have, but are so grateful that we do. Skillfully led by Past-President Gary Lessen, this committee met several times a month to help make the difficult decisions that led us across this rocky terrain this year. Special thanks to our team doctors, Debbie Adler-Klein (also an incoming Trustee) and Remi Rosenberg who were "on call" for us throughout the year with lots of medical advice and suggestions.

As most of you know, this was my first year as President of Temple Beth El. It is a role that is more consuming than I could have ever imagined. The best thing I have done this year is to surround myself with the smartest, most dedicated, most generous people, like all those who have already been

Continued on page 24...

**REPORT ON THE CAMPAIGN FOR TEMPLE BETH EL
AND THE LIFE & LEGACY PROGRAM**

(as delivered at the May 26 Annual Meeting)

I am pleased to report to the membership on the status of the Campaign for Temple Beth El, current major capital projects, and the Life & Legacy program.

Campaign for Temple Beth El

Although we will continue accepting pledges, we stopped active soliciting for the Campaign for TBE at the end of March. In total over 200 members made pledges totaling more than \$3.1 million – quite an accomplishment for our first capital campaign in almost fifty years. We have already received over \$2.6 million in payments, with the remaining balances due over the next few years.

Donors have directed their contributions into any (or all) of three categories. First is the Endowment for TBE, a permanent fund whose earnings will provide a perpetual income stream that will enable TBE to continue providing an extensive programming menu far into the future. Second is the Capital Projects Fund, which we are using to make significant improvements to our building (see below). Third is the Unallocated Fund, for donors who have asked the Board of Trustees to allocate their contributions into either Endowment or Capital based on the Temple's needs.

The Board has invested all funds with the Jewish Community Foundation of Hartford, which has about \$120 million under management. This spares us from needing our own Investment Committee and ensures that all investments will be both fiscally prudent and in accordance with Judaic values.

As of March 31, the fund balances (including retained earnings and net of capital project expenditures) were as follows:

- ⇒ Endowment Fund: \$1,015,000
- ⇒ Capital Fund: \$825, 000
- ⇒ Unallocated Fund: \$919,000

Special thanks as always to Campaign Chair Peter Kempner for his outstanding leadership.

Status of Capital Projects

The Board of Trustees approved four capital projects that are being funded by Campaign contributions – the elevator, a new lobby entrance, flooring and carpeting in the Social Hall, and renovation of all three downstairs bathrooms (men's women's, and family/accessible). Here is a status report on all four projects, as of mid-June.

⇒The elevator has been installed, and the project is 95% complete, with only some minor finishing work remaining to be done. We expect the state inspection to take place in early to mid-July, after which we may begin operating the elevator.

⇒The new glass doors for the lobby and sliders to the Matthew Klein Memorial Garden have been installed. The next step is to install accessibility features (such as auto-open) and security features (such as auto-lock and blast mitigation film) as recommended by the Stamford Police Department and our security advisors. This project will be completed well in advance of the High Holidays.

⇒Our team has selected and ordered new carpeting and

flooring (including a portable dance floor) for the Social Hall. We are using carpet squares so if a section becomes stained or damaged, we can replace it with a new matching square. This project will also be completed in advance of the High Holidays.

⇒We do not expect to receive the building permit for the bathroom renovations until July, which means that we would not be able to complete the project before the High Holidays. Hence we anticipate breaking ground on this project over the winter. Meanwhile our team has already selected the contractor and ordered materials for this project.

We all owe Executive Director Steve Lander, Facilities Chair Lael Shapiro, Design Team Lead Claudia Lubin, and TBE's Project Representative Sylvan Pomerantz a huge debt of gratitude for successfully completing these projects on time and on budget.

Life & Legacy Program

Life & Legacy is a community-wide program designed to promote planned giving to local Jewish organizations. It is being sponsored by the Harold J. Grinspoon Foundation and administered locally by United Jewish Federation of Stamford, New Canaan and Darien. Ten local Jewish organizations and synagogues (including TBE) are participating in the program.

As you may know, planned giving through Life & Legacy means pledging a portion of your estate to TBE and (if you wish) to other local Jewish organizations. Unlike other donations like the Campaign or the Annual Appeal, a donor doesn't pay anything during his or her lifetime. The payment comes from the donor's estate, and therefore doesn't affect their finances during their lifetime. And we will add all Life & Legacy donations to TBE's Endowment Fund, thus strengthening TBE's financial position for decades into the future.

Year 1 of the Life & Legacy program ended on May 31, and TBE had a very successful first year. Over 25 of our members have already made legacy pledges, and because of that we earned a \$5,000 bonus from the Harold J. Grinspoon Foundation. Pledges have ranged in value from \$1,000 to over \$100,000.

Why should you consider joining the Life & Legacy program? For so many reasons:

⇒You will be helping to ensure a thriving local Jewish community for decades to come.

⇒Your pledge will not affect your financial situation whatsoever during your lifetime.

⇒Making a planned giving pledge may sound complicated but it can actually be very simple (Our L&L team can explain why.).

⇒You will signal to your heirs the importance of investing in the future of Judaism.

⇒You will help TBE earn another \$5,000 bonus in Year 2 of the program!

For more information on how the Life & Legacy program works, please contact either me (carlrw99@gmail.com), L&L Team Co-Leader Jeff Cohen (jcohen@sillerandcohen.com), or Steve Lander (execdir@tbe.org).

Carl Weinberg, Immediate Past President

SISTERHOOD

Thank you to everyone who participated in The Period Project. Your donations benefitted many young women in need.



SPOTLIGHT ON SISTERHOOD BOARD MEMBER DONNA WOLFF

Donna Wolff, Executive Director of Starfish Connection, is currently seeking people who want to make a difference in a Stamford student's life by becoming a Starfish Connection Mentor.

Starfish Connection, Inc. is an all-volunteer organization, whose mission is to address Stamford's academic achievement gap by providing long-term mentoring, after school and summer enrichment programs, and educational support to promising students from the City's underserved families. If you are interested in making this life-affirming commitment, please check out Starfish Connection.

Website: www.starfishconnection.org

For more information, please contact Donna at 917-601-1878 or dwolff.starfish@gmail.com.



I would like to thank each and every one of you, from the top and bottom of my heart, for a beautiful, magical, meaningful Sisterhood Shabbat service.

Judy Aronin
Rosalea Fisher
Amanda Geffner
Sophia Geffner
Ilana Gilbert
Sarah Gilbert
Fran Ginsburg
Amy Greenberg
Lisa Grove-Raider
Mara Hammerman
Juli Harris
Devra Jaffe-Berkowitz
Sari Jaffe
Joy Katz

Julie Rosenberg
Eileen H. Rosner
Karen Resnick
Barbara Rothstein
Judy Schneiderman
Susan Schneiderman
Danielle Shapiro
Maya Shapiro
Paula Shulman
Joyce Slayton
Pamela Tinkham
Gail G. Trell
Harriet Weinstein
Donna Wolff

Naomi Sobel Marks

Special thanks to Cantor Katie, who beautified the service with her prayers and personal touch, and to Rabbi Hammerman for the Prayer for Israel and for being in the sanctuary and guiding us through the Torah readings. You both transformed a distant, virtual service into one where we felt connected.

NEXT YEAR IN THE SANCTUARY!

With appreciation and joy,
Leslie Heyison

Thank you to all who have contributed to the Diaper Donation Drive. Please bring your donations to the Diaper Box outside of the TBE office.



All donations will go to Schoke Jewish Family Services.

This program is sponsored by TBE Sisterhood and Men's Club.





Wow! Look what we accomplished this past year! Thank you to all Sisterhood members! We were extremely busy this past year planning our Sisterhood events. Not only did we raise money for the many different needs of the Temple, we became friends, met interesting women and enjoyed ourselves on Zoom. We hope to expand the Board next year. Please contact Sisterhood if you are interested.

Our zoom events this year included:

Food Trivia (July 2020)
Nutrition Lecture (August 2020)
Women Receiving the Right to Vote – 100 years (August 2020)
Candy Trivia (October 2020)
Origami (December 2020)
Video and book presentation – K. Kleinmen (December 2020)
Holiday ads event (January 2021)
Early paintings of Mark Chagall (February 2021)
Celebrate Women's History Month (March 2021)
Israeli Election Lecture (March 2021)

Sisterhood Shabbat Service (May 2021)

A special thank you to our Chairperson, **Leslie Heyison** for an outstanding job and to **Barbara Rothstein** for helping to coordinate our delicious breakfast. There were so many people who participated in this event, please see the special Thank You note in this Bulletin. Congratulations to **Leslie** for winning the **Rose Rosner Award** – you deserve it!

Sisterhood Book Events – Thank you to Dora Salm!

The Book of V
Caste (co-sponsor with Social Justice group)
The Book Women of Troublesome Creek
The Seven of Eight Deaths of Stella Fortuna
The World That We Knew

Food Events and Sales

Annual High Holiday Food Sale - pickup
Annual BBQ and Barachu – pickup
Passover Food Sale
Thanksgiving Food Sale

Donations

Gift to Religious School
The Period Project
Donation to Temple Rock
Donation to Emmet's Playground
College Freshman Gift Cards
Donation to TBE

Special Events

100th Year Anniversary/Cookbook Completed January 2021
Annual Clothing Drive

Sisterhood Cookbook! Free copy to member families!

Pick up your free Sisterhood cookbook for each member family as our gift to you for a limited time. Additional copies

are \$6 each (sold at cost). Contact TBE office for further details.

We are always looking for new board members – please join us! We would love to have you join us or attend one of our meetings to find out what we are about! Contact Sisterhood with your questions, new ideas you are interested in or to just talk. You can always find us at sisterhood@tbe.org.

Over the summer, the Sisterhood Board will be busy planning its 2021-2022 programs, including our clothing drive on Sunday, September 12, and a visit to The Dressing Room Theater at Curtain Call to see *Crossing Delancy Street* on Thursday, October 21. Details to follow in Shabbat Announcements and emails.

Finally, as the 2021-2022 year draws to a close, I would like to express deep appreciation to **Steve Lander, Stan Friedman, Beth Silver, Mindy Rogoff, Linda Rezak, Alberto Eyzaguirre** and **Rad Vazquez** for their guidance and assistance, and to the Sisterhood Board for making all of this possible. You bring energy and joy to my life and to TBE.

Have a wonderful summer! Stay safe! See you on ZOOM and looking forward to seeing you at TBE!

With appreciation and joy,
Karen Resnick, Sisterhood President

Please contact Sisterhood at sisterhood@tbe.org or feel free to call/email a Sisterhood board member with any comments. We love hearing from you and are always looking for volunteers!

Karen Resnick, President

203-536-3115, kmr925@sbcglobal.net

Judy Schneiderman, Treasurer

203-569-4969, judy2125@optimum.net

Dora Salm, Secretary

203-461-8596, d_salm@yahoo.com

Juli Harris, Board Member

203-276-0589, jaharris99@aol.com

Naomi Sobel Marks, Board Member

203-273-4650, nsobel@hotmail.com

Paula Shulman, Board Member

203-461-9396, paulashulman51@gmail.com

Donna Wolff, Board Member

917-601-1878, donna@wolffmedco.com

NOVEMBER

Zoom services: Kabbalat Shabbat Services, Shabbat Services, Daily Minyan, ShaBaBimBam, B'nai Mitzvah: Maya Shapiro, Austin Eisenstein, Owen Herz, Ilana Gilbert, Sunday Fundays at Emmet's Playground, Coffee and Pirkei Avot with Rabbi Gerry Ginsburg, Men's Club Blood Drive, Scotch and Torah sponsored by Men's Club, Zadies Baked Goods for Shabbat and Thanksgiving, Sisterhood Book Discussion: *The Seven Deaths of Stella Fortuna*, Virtual Deluxe Tour of Jerusalem with Peter Abelow, Last Act Transitions with Leo P. Gallagher & Son, Reopening Task Force Committee, Tzedek Committee, Fund Raising Committee, Temple Rock Committee, Board of Trustees, Executive Committee

DECEMBER



Zoom services: Kabbalat Shabbat Services, Shabbat Services, Daily Minyan, ShaBaBimBam, D'var Torah by Rabbi Gerry Ginsburg, B'nai Mitzvah: Alex Cohen, Aaron Friedman, 7th Grade Mock Brit Milah, Sunday Fundays at Emmet's Playground, Hanukkah Havdalah Tailgate Party, Religious School Hanukkah Celebration, Hanukkah Candle Lighting at the Government Center, Beth El Cares supplied food to three local shelters on Christmas, Sunday Fundays at Emmet's Playground, Gift Shop demolition to build the elevator, Sisterhood Origami Class, Award Winning Advertisements sponsored by Sisterhood, The Jewish and Christian Roots of Racism and Inclusion, Scotch and Torah sponsored by Men's Club, Coffee and Pirkei Avot with Rabbi Gerry Ginsburg, Workshop on Implicit/Unconscious Bias, Adult B'nai Mitzvah Meeting, Men's Club Blood Drive, Sisterhood

Book Discussion: *The Boy Who Followed His Father to Auschwitz*, Meditation and Guided Imagery with Katie Kaplan, Cantorial Soloist, Membership Committee, Men's Club Meeting, Temple Rock Committee, Reopening Task Force, Fund Raising Committee, Temple Rock Meeting, Board of Trustees, Executive Committee

JANUARY

Zoom services: Kabbalat Shabbat Services, Shabbat Services, Shabbat-in-the-Round, Daily Minyan, ShaBaBimBam, D'verei Torah by Rabbi Gerry Ginsburg, Beverly Stein, Hank Silverstein, Tu B'Shevat Family Seder, TBE Clubs Meeting, Social Action Leadership Group, Hartman iEngage Series, Cooking Class with Chef Dana, Adult Hebrew Reading Class, Virtual Club-Open House, STEM Club - Infertility in the Bible, Sisterhood Book Discussion: *Woman of Troublesome Creek*, Temple Rock Committee, Meditation and Guided Imagery with Katie Kaplan, Coffee and Pirkei Avot with Rabbi Gerry Ginsburg, Scotch and Torah sponsored by Men's Club, Men's Club Blood Drive, Reopening Task Force, Life and Legacy Committee, Men's Club Meeting, Hiking/Walking Club, Temple Rock Committee, Board of Trustees Meeting, Executive Committee

FEBRUARY



Zoom services: Kabbalat Shabbat Services, Shabbat Services, Shabbat-in-the-Round, Daily Minyan, ShaBaBimBam, D'var Torah by Beverly Stein, Children's Mental Health and the Effects of the Pandemic with Dr. Alvin Rosenthal, Meditation and Guided Imagery with Katie Kaplan, Broadway/Movie Club, Purim Celebration, Hiking/Walking Club, Heart-to-Heart Club, Temple Rock - Coming Together: The Magic of Community, World Wide Wrap with 7th Grade Students and Families, The Amazing Purim Race, Sisterhood Book Discussion for Congregation - *Caste*, The Art of Mark Chagall presented by Sisterhood, Pesach Study with Rabbi Gerry Ginsburg,



Adult Hebrew Reading Class, TBE Clubs Meeting, Hartman iEngage Series, Coffee and Pirkei Avot with Rabbi Gerry Ginsburg, Reopening Task Force, Temple Rock Committee, Board of Trustees, Executive Committee

MARCH



Zoom services: Kabbalat Shabbat Services, Shabbat Services, Daily Minyan, ShaBaBimBam, D'verei Torah by Rabbi Gerry Ginsburg, Beverly Stein, Passover Services, Pesach Study with Rabbi Gerry Ginsburg, Hiking/Walking Club, B'nai Mitzvah Parents Meeting, High Holiday Committee, Heart-to-Heart, Zadies Curbside Pick-up, Ben's NY Deli Curbside Pick-up, Broadway/Movie Club, STEM Club, Israeli Election with Pinchas Gross, TBE Singers, Sisterhood Passover Food Sale, Tenement Museum Tour, Men's Club Presents



Hearing Men's Voices, Sisterhood's Cookbook, Matzah Baking Workshop, TBE Clubs Oversight Committee, Meditation and Guided Imagery with Katie Kaplan, Men's Club Blood Drive, Adult B'nai Mitzvah Class, Adult Hebrew Reading Class, Men's Club Meeting, Hartman iEngage Series, Women's History Month with Naomi Sobel Marks, Board of Trustees, Executive Committee

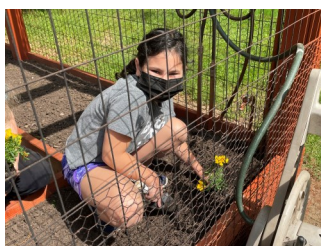
APRIL



Zoom services: Kabbalat Shabbat Services, Shabbat Services, Daily Minyan, ShaBaBimBam, B'nai Mitzvah: Liam Raz, Sarah Strom, D'var Torah by Rabbi Gerry Ginsburg, TBE Clubs Meeting, Meditation and Guided Imagery with Katie Kaplan, Religious School Meets Outside, Sisterhood Cookbook in honor of TBE's 100th Anniversary, STEM Club, Men's Club Meeting, Sisterhood Book Discussion: *The Book of V.*, Hiking/Walking Club, Men's Club Blood Drive, Adult B'nai Mitzvah Class, Heart-to-Heart, Adult B'nai Mitzvah Class, Men's Club Yellow Candle Project, Board of Trustees, Executive Committee



MAY



Zoom services: Kabbalat Shabbat Services, Shabbat Services, Shavuot Services, Daily Minyan, ShaBaBimBam, Sisterhood Shabbat, B'nai Mitzvah: Brooke Wolly, Jordan Wolly, Sasha Handel, Jordan Alexander, Wesley Levine, D'var Torah by Rabbi Gerry Ginsburg, Men's Club Blood Drive, TBE Annual Membership Meeting, Broadway/Movie Club, Hiking/Walking Club, Religious School End of Year Celebration Outside, Annual Cantor's Concert honoring Alberto Eyzaguirre and featuring Nefesh Mountain, TBE Singers, Heart-to-Heart, B'nai Mitzvah Parent's Meeting, Religious School Open House, TBE Clubs Meeting, Shtisel Night at TBE, Meditation and Guided Imagery with

Katie Kaplan, STEM Club, Men's Club Presents Hearing Men's Voices, Adult B'nai Mitzvah Class, Continental Breakfast Curbside Pick-up for Sisterhood Shabbat, Zadies Bakery Pick-up for Shavuot, Board of Trustees, Executive Committee



JUNE

Zoom services: Kabbalat Shabbat Services, Shabbat Services, Daily Minyan, ShaBaBimBam, Kabbalat Shabbat special guest Cantor Deborah Jacobson, B'nai Mitzvah: Harrison Tronick, Pride Shabbat with Elon Green, guest speaker, Men's Club Blood Drive, 7th Grade Religious School Graduation, Hiking/Walking Club, Broadway/Movie Club, Heart-to-Heart, Men's Club Presents Hearing Men's Voices, Adult B'nai Mitzvah Class, Sisterhood Book Discussion: *The Lost Book of Names*, Meditation and Guided Imagery with Katie Kaplan, Fund Raising Committee, Reopening Committee, Heart-to-Hearts, Men's Club Meeting, Ben's NY Deli Curbside Pick-up, Backyard Bash - Socially Distanced Picnic, High Holiday Choir Rehearsal, Board of Trustees, Executive Committee



THE CAMPAIGN FOR TEMPLE BETH EL

Join your friends today to support The Campaign!

\$100,000+

Anonymous (1)
Stephne & Kerrin Behrend
Sue Frieden
The Horowitz Family
Elissa Garber-Hyman & James Hyman
Sari & Alan Jaffe
Betsy & Peter Kempner
Lois Stark & Gary Lessen
Lisa & Michael Rome
Betsey & Arthur Selkowitz/Selkowitz Family Foundation
Miriam & Steven Sosnick
Dana & Carl Weinberg

\$25,000 – \$99,999

Anonymous (1)
Bonnie Kintzer & Eric Baker
Devra Jaffe-Berkowitz & Parry Berkowitz
Barbara & Edward Berman
Senator Richard & Cynthia M. Blumenthal
Lynn Villency Cohen & Stephen A. Cohen
Malerie Yolen-Cohen & Jeffrey Cohen
Judy Dalgin Suchin & Norman Suchin
Helen & Martin Donner
Frances & Gerry Ginsburg
Sondra, z'l & Leo Gold
Denise & David Greenman
Phyllis & George Heller
Peggy & Alan Kalter
Beverly & Allen Kezsbom
Liz & Scott Krowitz
Christopher Maroc & Richard Heimler, z'l**
Melanie Massell*
Jill & Mitchell Nadel
Dorothy Levine & Alvin Rosenfeld
Linda & Joe Rothman
Marsha Kaiser Shendell
Sharon & Jeff Turshen
The Wise Family

Sheryl & Daniel Young

\$15,000 - \$24,999

Anonymous (1)
Nancy & Brad Benjamin
Joanne & Marshall Goldberg
Leslie & Joseph Heyison
Ellen & Arthur Laichtman
Debbie & Stanley Lee
Ellen & Joel Mellis
Cynthia & Stan Miller
The Pearce Family
Lynn & Alan Pearce, Nancy & Jeff Herz, Carin & Greg Kalt
Jerry Rose, z'l
Miriam & Michael Schechter
Susan & Carl Shapiro

\$5,000 - \$14,999

Anonymous (8)
David Amsellem
Barbara & Warren Brandt
Carol & Wil Brewer
Melissa & Kenneth Broder
Stewart Casper
Marsha Colten & Robert Cohen
The Ditesheim Family
Bobbe & Ben Evans
Carolyn Nadel and Philip Farin
Barbara & Stanley Friedman
Rachel & Keith Friedman
Heidi & Harrison Ganz
Lori & Raph Gilbert
Leslie Glenn
Phyllis R. Gofstein
Maddie Sobel & Bob Goldman
Loralee & Philip Granowitz
Myra & John Graubard
Susan & Art Greenwald

Contact Steve Lander 203-322-6901, ext. 304 campaign@tbe.org

THE CAMPAIGN FOR TEMPLE BETH EL

Join your friends today to support The Campaign!

Nancy & Jerry Kapchan
Debra Adler-Klein & Matthew Klein, z'l
Carol & Allen Krim
Ruth Kwartin
Roni & Allan Lang
Rivka & Daniel Lieber
Jennifer & Harris Meth
Roslyn & Merritt Nesin
Suzanne & Craig Olin
Honni & Sylvan Pomerantz
Caryl Ferber Poser & Peter Poser
Risa & Steven Raich
Robin & Richard Redniss
Meredith & Eric Reuben
The Romanowitz Family
Julie & Remi Rosenberg
Joan & Robert Rosenthal
Eileen H. Rosner
Sally & James Rothkopf**
Nancy & Gary Schulman
Stephanie & Larry Sherman
Bracha & Jerry Silber
Phyllis & Harvey Walzer
Mia & Lonny Weinstein
Ronnie & Michael Wiederlight
Cheryl & David Wolff
Dorothy & Steven Zeide
Stephanie & Daniel Zelazny
Nicole & Ron Zussman

\$500 – \$4,999

Anonymous (10)
Diane & David Arditti
Marian Bauer
Wendy & Joel Brest
Sandra Burn, z'l
Rita & Michael Buttermann
Amy & Aron Davidson
Karen & Dan Davis
Robin Evans
Maxine & Jay Freilich
Cathy Bernstein & Bud Freund
Meira Rosenberg & David Friedman
Catherine & Craig Giventer
Susan & Larry Holzman
Hayley & Joshua Levine
Charisse & Mark Litchman
Ilene & James Locker
The Magida Family
Lisa & Jeffrey Manheim
Marsha Matthews

Risa & Mike Pollack
Karen Resnick
Stewart Rosenblum
Irma Ross**
Barbara & Steve Rothstein
Judy Schneiderman
Danielle & Lael Shapiro
Sandra & Alvin Siegartel
Beth & Peter Silver
Marcia & Mark Staines
Suzanne & Norman Stone
Roberta & Barry Strom
Jane Levine & Adam Tronick
Beth & Sanford Weinberg
Dana Horowitz & Peter Wolly

YOUR CAMPAIGN DOLLARS AT WORK



*Planned Giving
**Donor and Planned Giving
Donor List as of 6/30/2021

Contact Steve Lander 203-322-6901, ext. 304 campaign@tbe.org

TEMPLE BETH EL'S LIFE & LEGACY

HONOR ROLL



*The following members have already notified Temple Beth El
of their legacy pledges to TBE*

Anonymous (2)
Devra Jaffe-Berkowitz and Parry Berkowitz
Jeff Cohen and Malerie Yolen-Cohen
Susan Frieden
Keith and Rachel Friedman
Leslie Glenn
Richard Heimler, z'l
Alan and Sari Jaffe
Joy Katz
Larry Katz
Betsy and Peter Kempner
Elizabeth and Scott Krowitz
Lieba and Steven Lander

Gary Lessen and Lois Stark
Jeffrey and Lisa Manheim
Chris Maroc
Melanie Massell
Drs. Jeffrey Perry and Robin Evans
Caryl and Peter Poser
Irma Ross
Jim and Sally Rothkopf
Miriam and Steven Sosnick
Gail G. and Stephen Trell
Carl and Dana Weinberg
Dan and Sheryl Young



THANK YOU TO ALL OUR LEGACY DONORS

FOR ASSURING JEWISH TOMORROWS

PLEASE JOIN THEM!

For more information on how the Life & Legacy program works, please contact L&L Team
Co-Leaders: Carl Weinberg (carlrw99@gmail.com), Jeff Cohen (jcohen@sillerandcohen.com)
or Steve Lander (execdir@tbe.org) 203-322-6901, ext. 304.

THANK YOU TO OUR LEGACY TEAM

Jeff Cohen and Carl Weinberg, Team Leaders

Keith Friedman • Steven Lander • Lisa Manheim • Melanie Massell • Jim Rothkopf

Here is a collection of personal essays, written by TBE congregants - reflections on how they managed life during the Covid-19 pandemic this past year.

Pandemic Thoughts

Adjusting to retirement proved more difficult than I would have imagined while working...Be careful what you wish for. The pandemic made it even more so, although I found a little misplaced comfort in having so many others in the same boat.

I experienced several new top-of-mind thoughts. I recalled that my grandmother died in the 1918-19 pandemic when my father was just a year old. And every day: Am I okay today?

Like everyone, I kept in touch by phone, FaceTime and Zoom. Complaints about Zoom seemed far more prevalent in work situations compared to personal contact. A friend of mine said he'd been socially distant all his life, so this was really no different. I enjoyed my Zoom visits with everyone, regardless of background.

Beyond being fortunate enough to have enough outdoor space to walk around for a while, the company of my suddenly work-from-home wife and our dogs, cats, and chickens (along with fresh eggs daily), and friends willing to brave a trip to Costco for us, I came to appreciate the daily 1pm minyan, certainly easier to attend than showing up at the Temple at 7:30am. Much more importantly, I deeply appreciated the structure and community which was otherwise absent. The online pdf of the prayerbook was clearly labeled "For use only: March-April 2020" and although I fully respect copyrights, early on I knew that March-April 2021 was far more likely, and possibly beyond. Sure enough.

On the High Holidays I streamed the services to my TV and enjoyed the closeup view of the Rabbi and Cantor. I particularly appreciated a Yizkor service which allowed me to stand next to the memorial candles for my parents.

Fully vaccinated for over a month now, I no longer wake up every day wondering if I need to go for a COVID test. I go to Costco for myself. And I greatly appreciate the slow and safe return to some version of normal and, especially, the people who worked so hard to get us this far, and all the people who took the pandemic seriously. I feel blessed.

Rob Friedman

✎

Humor

I have been sustained in this last year by our capacity for humor. One of my neighbors has a mask on a rabbit lawn ornament. Another has two signs in front of the house. One reads, "We are in this together." At the appropriate distance, the other reads, "Just six feet apart."

Meryl Silverstein

✎

The Continuing Journey

"Life is a journey, not a destination!!!" How often I have repeated this quotation and pondered how accurate is its meaning!!!

Certainly, the pandemic and the challenges surrounding this virus shows us allllllllll how difficult, challenging, and even sometimes frightening, the journey of life can become!!!

The charge has been to share what have we found to cope and how have we managed during the difficult times of isolation and separation from family and friends. Did I find the months during the height of Covid strange, initially unfamiliar and sometimes beyond, beyond lonely??? DEFINITELY!!!

Soooooooooooo, how did I manage??? MUSIC - listening to my favorite CD's; sometimes classical, sometimes jazz, sometimes solo singers, and often my favorites - BROADWAY MUSICALS!!!

And then, there is my "addiction"!!! TCM - TURNER CLASSIC MOVIES. I really, really adore many of the old black-and-white films and stars of the past: GINGER ROGERS, FRED ASTAIRE, CARY GRANT, KATHERINE HEPBURN, etc., etc., etc.!!! And, of course, FABULOUS MOVIE MUSICALS: *SEVEN BRIDES FOR SEVEN BROTHERS*, *THE KING AND I*, *SWING TIME*, *ROYAL WEDDING*, *AN AMERICAN IN PARIS* and tooooooooooooo many others tooooooooooooo numerous to mention.

I am continually comforted and strengthened by the care, support, and love of treasured friends!!! Sooooooooooooo many remarkable people reached out to me with care and concern. During the initial weeks and months of the pandemic, friends did my grocery shopping each week. They shopped really, really early on a weekend morning and as they did their own shopping, they simultaneously managed to take care of my list. They then arrived at my door, fully masked (This was well before the vaccines were available.) and dropped of my groceries!!!

I am compelled to share my continuing connection with my TBE family. First of all, our remarkable B'nai Mitzvah students...These amazing students are a life force, and they provide me with a dedication beyond myself!!! The students I tutor have become even more essential to me during the pandemic - to have an agenda, to have a need to continue our study sessions.

I value this more than words can adequately express. Sometimes, it is clear to me that I learn more from my students than I provide. The connection with each student, the dedication of each student and then the joy of sharing in each family's simcha is beyond description!!! I take wondrous pleasure as I experience with each student, what they accomplish!!!

TEMPLE BETH EL, MY RABBI HAMMERMAN, MY RABBI GINSBURG, MY CANTOR KATIE - each one of them is always at the ready to be by my side - good news, challenging times...whenever, whatever!!!

Our Zoom daily minyans have provided a new, meaningful way to honor the person we remember with the Kaddish. Each one of us has the opportunity to share stories and to talk about the person we remember. For me, this has occurred twice, as we marked the yahrtzeit for our MERYL PEARL. For me, this changed the observance from a sad, painful experience into an extraordinary celebration of a life sooooooooooooo well lived!!!

These experiences have been incredibly comforting, strengthening, and empowering.

And our Friday night services are particularly wondrous for me. Meryl Pearl especially soooooooooooooo adored the Friday night service. He soooooooooooooo relished the music; and now, sometimes, although it may sound rather magical, Meryl Pearl actually makes an appearance at a Friday night service!!!

I have really, really, really missed my West Coast family; our sons, DANIEL and RUBEN; our daughters, CYNTHIA and MARISOL; our cherubs, BRENDAN and ARACELI!!! Much tooooooooooooo much time has passed since I have seen them and had the opportunity to share iph'z - in person hugz!!! Not at all certain when we will be together; hope, of course, it will be in

the not tooooooooooo distant future!!!

Now that many of us are completely vaccinated, and life in many arenas is beginning to open again, I do feel hopeful that we will come through this health crisis and hopefully, we will be wiser and stronger!!!

My heart aches for all those who have lost a loved one as a result of covid. Not only have so many been forced to experience the death of a loved one; in addition, for so many, the family members were not even able to be at the side of their cherished loved one as they lay dying in a hospital bed. Such an unspeakable tragedy for far too many!!!

Oh yes, I have reconnected with an amazing friend from our college days. For a variety of reasons, we lost touch with one another. Since February, actually the night of TBE's Temple Rock, we have reconnected. It is amazing to be, once again, in each other's lives!!! One additional and extraordinary development, my friend has a grandson who will soon be ready to study in preparation to become Bar Mitzvah. Guess who is going to be his tutor??? That is going to be me!!! How incredible!!!

I am forever grateful to my entire family, to treasured friends who have become family, and to my TBE family!!! Alllllllll these people who continue to care and to stay in touch!!! Together, we will alllllllll move forward to brighter days with renewed opportunities to share, to celebrate and to experience more of life's wonders!!!

Judy Aronin



My Next Door Neighbor

Who would have thought that I could live next door to Temple Beth El, but it would seem a thousand miles away? This was one of the first things I missed when the world shut down. I could socially distance in a backyard to see my kids (no hugs allowed), but the Temple is part of almost every day. I yearned to peak in the sanctuary window but did not because I felt it wasn't fair to the rest of the members. I wanted to see the Ark, the pews, the upstairs chapel. I missed sitting next to the Cepler family plaque that has family's yahrzeit dates. I sit in the second row on the right for daily minyan. The plaque has been there for 35 years but when I started to attend daily minyan after my Mother died, this was my special place. The minyanaires never sat in the seat. They sat in front, or in back or even next to me, but not until I sat...What an amazing honor for me to be in the cozy seat next to the names of my Father, Mother, Stepfather and in-laws.

One day I was sitting on my deck, and I heard a shofar. What was that all about?? I tiptoed through the parking lot and peeked at Marc Schneider and Rabbi Hammerman recording for the High Holidays. What a joy came with that trespass. It lifted my spirits knowing that Rosh Hashanah would indeed be delivered in some form for all to experience. Months later when Rabbi Hammerman returned to the chapel one Saturday morning, he opened the Torah scroll and turned the camera. That was a spectacular sight. We take the Torah for granted. It is always there for us; however, seeing the beautiful calligraphy laid bare brought me indescribable joy. The Rabbi even panned the chapel walls and stopped in front of my family's names. It took my breath away as I squinted to take in as much as I could.

I look forward to returning. After 44 years, Temple Beth El is indeed mine and I am grateful to all those who keep it beautiful and running for all of us.

Carol Krim

Virtual Minyan Experience

It began with support for my Dad's passing, and quickly went to camaraderie and a routine place to be with the TBE community and G-d; right in the middle of the day! Something to look forward to in the midst of the pandemic was a great place to heal my wounds. The heartache I was feeling was surrounded by the heartaches of others who were experiencing the same kind of pain. If minyan were in person, I would not have been able to get there daily. The timing of the 1pm minyan allowed me the opportunity to schedule my clients around it and be present in a holy, sacred space, right in the midst of my workday.

There were many special moments but the one that stands out the most was saying Kaddish with the minyan while I was showing them the lake outside my Dad's condo where I am now living. With the video I was able to show them my serenity and healing space, where my Dad was president and took care of the people and the land for many years.

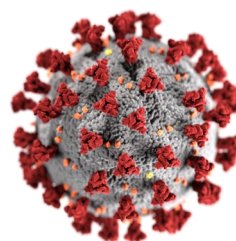
The other virtual memory happened on Shabbat morning at the ocean in Delray Beach. I, as a Kohen, am honored with the first aliyah at the Torah. I was planning to just listen in to the service as I bathed at the beach and quickly realized, when I was sunbathing, that even though I was "just listening" I ought to check the chat box to make sure they didn't grant me an aliyah in my bikini! Sure enough, I was the first aliyah and I quickly got dressed, turned on the camera, pointed it toward the sand and waves and did the blessings for the Torah! After that I tried to go off camera (and Eileen Rosner knows this) and tried to sunbathe again. As soon as I took off the layers and got back in my bikini, one of my bags blew away with the wind and I had to chase it halfway down the beach running in a bikini that I would not have wanted to run in!!! I told Eileen that G-d has a sense of humor and that because I wanted to check out of the service, off camera, and go back to sunbathing...G-d said NO and had me chasing my bag!!! In a thong bikini!!! Not funny!!!

The experiences above are humorous, sacred and endless with the virtual minyans and services. People can come from across the globe and be together for mourning. Relatives who would normally not ever attend synagogue could attend and not feel threatened. They felt more welcome than walking into a chapel in the synagogue where they would not know anyone. The Zoom minyan took away the fear of going into the unknown, for many. It was an easy way for people to join, on or off camera, and to feel comfortable with their grief in a safe and holy place.

Words can't express enough the deep gratitude for TBE and the virtual minyan and now that I've moved to my late Dad's condo, Irwin B. Gerber's condo, a.k.a. Grandpa's condo (as I tell Londy, my cat) I am hoping that virtual minyan will continue so that I can continue to join in the most beautiful, egoless, holy place at lunchtime that there is!

Thank you and AMEN.

Pamela Tinkham



TBE COVID MEMORY PROJECT

Pandemic Temple Rock – A Story about a Community

Temple Beth El ~ Temple Rock ~ Come Together ~ The Magic of Community ~ February 6, 2021

It was an unbelievable experience... We were deep into the year of Covid and we had no idea how we were going to create our beloved *Temple Rock*, the annual festive gathering and fundraiser for our Temple Beth El Community.

One moment Scott Krowitz and I were brainstorming about perhaps having fire pits in Covid safe bubbles in the Temple parking lot, then perhaps a drive-in movie night, and God only knows what else; but at the end of the day, it all comes down to being inclusive and being together, so, we had no choice! We had to **ZOOM!**

How do we put on a night of fun and meaning in a few hundred squares on a cold hard piece of technology?

You bring the party to everyone. And we did. An auction to break records. Food in a box. Bar in a bag.
Magical toys. Musician. Magician. Expressions with meanings. Gratitude.
And giving...giving Big Time. And honoring special people as we gave. People who are here and people who are gone.

Not just keeping the money for Temple Beth El (as we surely could use it for a never-ending list of potential projects) but truly giving it to those in need...Perhaps those in need right here in our greater Stamford community. How generous a community!

As for me...

I was grateful.

Grateful to have the opportunity after so many months to do something meaningful again. Grateful for the opportunity to create something special after almost a year devoid of intentional creativity and work.

A year of cooking and eating and cleaning and organizing - at home purging - and dreaming of doing something meaningful for others.

Something that mattered. Something that was magical. And being trusted with a charge.
I was grateful for the blind faith buy-in. For the tight knit community of do-gooders that believed in me.

I didn't do it alone, although sometimes I wondered whether everyone else would think what I was doing was important.

The attention to detail and the constant care. The tweaking and the nudging and the wanting more.
And the meaning behind everything.

Bags and Boxes Festivities in a giant bag! Bags and boxes in bags!!!

Someone told me early on having alcohol in the package was not a good message. It was actually perfect. It was festive and fun and felt like a party was going to happen - even if you didn't drink! And liquor wasn't the only beverage option. The bag of drinks was just meant to be fun. Like sidling up the bar with a few of your friends and chatting without having to worry about driving home!

But a party without meaning is just a party. We had both.
We had a deck of cards that illustrated our meaning, our care and our gratitude.
They were all the Queen of Hearts. No joke-r.

And we had people who put their hearts and their hands together to make it truly come together. The painfully counting all the elements in the bags for days and making sure it was just right. And last-minute volunteers who lifted our spirits and our waning energy.

Stickers sticking. Boxes closing. Tissues brightening. Magic wands lightening. Bags filling. Drivers flying.
It was amazing. Invigorating.

And still, as 8 pm approached and I sat in the Temple Beth El conference room on my old, obsolete laptop signing in to Zoom, I had butterflies in my stomach. How to control what I can't. There was nothing more for me to do. So, there I sat, in a red dress that matched our red bags and graphic elements. In a room of green lights and a library that was not filled with my books...and let go. I knew we had practiced and rehearsed, and we all knew exactly what to do. We had timelines and cues down to minutes and in a multitude of colors. Because we all felt the same even before it started.

"Buy it now" buttons were being hit and auction items were being driven up in price. People were lining up their tiny little bottles of Bourbon and Kahlua and apple cider. Heating up their appetizers and main courses. Sitting on cozy couches with blankets and fireplaces and warm lighting. From Florida to Connecticut and somewhere in between, everyone was poised to come together.

And a single office away a man and his wife were waiting with me. Not just any man. An AMAZING man...Without whom none of this could have "come together" as well. A man who always had my back. (Even when he told me that they delivered green bags instead of black and red!) (Funny not funny!)

So, I took a deep breath, sat down in that green conference room chair in that cold room with the terrible lighting. Not knowing how to be me at an event without a big camera shielding my face. Closed my eyes and prayed a little. I smiled as I saw the people suddenly appearing in tiny little squares excited to celebrate. I popped open a spiked seltzer. And knew I had done all that I could. Truly....

Hit it Stan...We've got this. We **Came Together**. It was **The Magic of Community**...
You guys (at Temple Beth El) are Pros. Thank you for asking me to be a part of it. And..."Where's the Bar?"

Aviva, Your Event Planner...

TBE COVID MEMORY PROJECT

When Rabbi Hammerman asked our congregation on Shabbat morning if we dress differently for Shabbat on Zoom services, I said jokingly that I do dress differently for Shabbat, because I think about our daily minyan group seeing me in the same Brooklyn, NY sweatshirt on multiple occasions, and what they might think. It made me laugh and cringe that someone might say: Does she only own one piece of clothing??

The truth is that Shabbat signifies a new sacredness given to us each week, and I want to honor that by wearing something a little more festive.

Over the course of two months, between mid-August and late October, both my brother and my mother passed away. I sat two shivas, almost back-to-back; each quite different from the other and both without the usual gatherings of family and friends. Post-shiva, I went through an extraordinary level of grief and, through that, what held constant in my healing process was knowing I was signing onto afternoon minyan. Each day, I felt my hands being held and my heart being soothed as I chanted the familiar prayers and supported others who their lost loved ones. Having this available to me every day was invaluable. I could just be myself, be wherever I needed to be, and have the support and love of the people in our minyan knowing I was suffering and holding me close.

It's been a very unique experience being a part of this virtual yet intimately connected group. Because of Covid necessitating a new format for synagogue prayer, we come together on small screens instead of in a chapel, connecting through energy, chat boxes and words rather than in person, and precisely because of this we have become a minyan family. And my minyan family holds a sacred space in my heart every day. Being able to meet on Zoom was one of the biggest gifts during a truly difficult year for everyone. As a therapist, I was able to schedule my days with the space for daily minyan. This has allowed me to say the Mourner's Kaddish every day, which would not have been likely pre-Covid. When my dad passed away in 2007, I came once a week for a year to say Kaddish. Now I get to say it every day, and I know that's just what I've needed to heal and to honor my family.

What touches me the most is that during minyan we write in the names of those in our lives who need healing, and we say the prayer for refuah shlemah in the middle of the Amidah. Each day, I pause and focus my energy and attention on the names I write as well as all the names and initials that any member of our minyan family writes in. I envision each person thriving in their lives with whole health and well-being. With those I know, I physically picture them happy, healthy and free, and with others' names, I send them healing and energy and imagine them so happy in their lives. I can share that a dear friend of mine who has been dealing with metastatic cancer had a clear PET scan after being held in our chat prayer box. I know that we all hold the prayers and intentions for each other, and this means the world to me; to both give and receive.

As life readjusts and we slowly come back to our in-person synagogue life, I still look forward to the privilege of being with our minyan family at one o'clock every weekday.

Hope Stanger

THE TBE 100 MITZVAH PROJECT

The TBE 100 Mitzvah Project provides opportunities for congregants to honor TBE's centennial through the performance of *gemilut hasadim* (acts of loving kindness) that help charitable organizations in need of volunteers and non-monetary contributions.

Mitzvah Opportunities at the Schoke Jewish Family Service of Fairfield County

• **Work at the kosher food pantry at SJFS.** Distribute food during walk-in hours: Monday - Wednesday, 10:30 am-12:30 pm. Organize and maintain the pantry: Monday - Friday, 9 am - 4 pm.

• **Deliver meals and food items** to homebound clients. Time is flexible.

• **Participate in Mitzvah Monday** with your kids on the third Monday of each month (from 3 pm-5 pm. Bring kosher food items to the pantry and help stock shelves. GREAT for teens!

• **Visit a homebound client** for a "friendly visit" to alleviate loneliness. Time is flexible.

• **Donate food and non-food items.** Items can be dropped off at the TBE office or at SJFS.

If you are interested in doing one or more of these mitzvahs, please contact Jill Knopoff at (203) 921-4161. Don't forget to mention you're from TBE.

After completing a mitzvah, please send a note to mitzvah100@tbe.org with the name or names of the family members who participated, the mitzvah, and a photo if possible.

YOUR CAMPAIGN DOLLARS AT WORK

LOOKING FORWARD TO WELCOMING YOU THROUGH THESE NEW, AUTOMATIC DOORS.



DONATE ONLINE
Go to: www.tbe.org/donate/

OPPORTUNITIES FOR GIVING

- ☒ Adult Education Fund
- ☒ Beth El Cares
- ☒ Beth Elders
- ☒ Debra Wald Goldberg Kindergarten Scholarship Fund
- ☒ Frank & Rose Rosner Memorial Fund (maintenance)
- ☒ General Fund
- ☒ Kiddush Fund
- ☒ Matthew Klein Memorial Sanctuary Garden Fund
- ☒ Emmet Manheim Playground Fund
- ☒ Mitzvah Garden Fund
- ☒ Music Fund
- ☒ Prayer Book Fund
- ☒ Project Ezra Fund
- ☒ Religious School Fund
- ☒ Reyut Shabbat Bag Fund
- ☒ Security Fund
- ☒ Solar Fund in memory of Norma Mann, z'l
- ☒ Youth Fund

DISCRETIONARY FUNDS

- ☒ Rabbi Joshua Hammerman's Mitzvah Fund
- ☒ Cantorial Soloist Katie Kaplan's Mitzvah Fund
- ☒ Hazzan Sidney Rabinowitz' Mitzvah Fund

ATTENTION PARENTS OF COLLEGE STUDENTS

Rabbi Hammerman would like to stay in touch with your child while he/she is away at college. Please send his/her e-mail address to Mindy in the Temple office at office@tbe.org. *Thank you!*



TREE OF LIFE

A beautiful way to commemorate a special occasion is to purchase a "leaf" on our beautiful "Tree of Life" sculpture adorning our Temple lobby. There are many more leaves available for your own personal inscriptions.



The following categories are still available:

Triple Chai	\$5,400
Silver Leaves - Gold Border	\$750
Silver Leaves	\$250

BETH EL CARES

Beth El Cares focuses on chesed and tzedakah by helping the poor and unfortunate through mitzvot, both in our synagogue and the greater Stamford community. We welcome volunteers! This is the work we are currently engaged in. If you are interested in volunteering in any of these endeavors, please contact the person listed.

Reyut (Friendship): Committed to serving the needs of those in our TBE community, including friendly visits, assistance with errands and transportation, Shabbat bag delivery to hospitalized patients. Contact Melanie Massell at reyut@tbe.org or 203-324-7190.

Project Ezra: Providing pre-shiva meals to the bereaved in the congregation. Contact Joy Katz at joyakatz@yahoo.com or 203-329-3359.

Serving the homeless: Helping prepare and serve food — you can do either or both — to the homeless at New Covenant Center in Stamford on the fifth Thursday of each month. Times are 2:30-4:15 pm and 4:15-5:30 pm. Contact Amy Temple at aetemple@optonline.net or 203-496-1309.

High Holiday Food Drive: Contact Sharon Turshen at 203-323-3872

Christmas dinners at local homeless shelters: Contact Amy Temple at aetemple@optonline.net or 203-496-1309.

**SEEKING SHABBAT GREETERS
WHEN WE RETURN**

Do you like getting a warm "Shabbat Shalom" as you enter shul on Saturday morning?

Our greeting program has been extremely well received. To keep this program going, we need volunteer greeters like you.

For more information Contact Eileen H. Rosner at rosnereileen@gmail.com.

Thanks for helping make Temple Beth El a warm and welcoming place to be.

**CELEBRATING A SPECIAL EVENT?
COMMEMORATING A YAHRTZEIT?**

Please consider sponsoring a VIRTUAL Kiddush, following Shabbat Services, or a Kiddush-to-Go, following our Friday evening services.

Contact Steven Lander for all of the new, reasonably priced Kiddush options at 322-6901, ext. 304 or execdir@tbe.org.

PAY YOUR DUES ONLINE

Go to www.tbe.org/donate and click on member payments.

Questions? Contact Linda at 203-322-6901, ext. 302 or lindar@tbe.org.

WE ARE GRATEFUL FOR YOUR CONTRIBUTIONS

IN HONOR OF:

ROBERT COHEN FOR A REFULAH SHELEIMA

Debby & Jack Goldberg, Devra Jaffe-Berkowitz & Parry Berkowitz

THE ARRIVAL OF MARLOW IVY SELKOWITZ

Marsha Colten & Robert Cohen, Devra Jaffe-Berkowitz & Parry Berkowitz

THE BIRTH OF AUSTIN SHAY FEINBERG

Marsha Colten & Robert Cohen, Susan & Art Greenwald

THE BIRTH OF LUCAS JAMISON LAFFERTY

Marsha Colten & Robert Cohen, Judy Schneiderman, Romanowitz Family, Betsy & Peter Kempner, Fener Family, Suzanne & Norman Stone, Susan & Art Greenwald

JORDAN ALEXANDER BECOMING A BAR MITZVAH

Susan & Richard Blomberg

ROSALEA FISHER ON HER SPECIAL BIRTHDAY

Romanowitz Family

THE BIRTH OF TALIA EVELYN FENER

Romanowitz Family

ALEXIS TEICHMAN BECOMING A BAT MITZVAH

Carolyn Temlock Teichman & Marc Teichman

MUSIC FUND

In honor of...

Brooke & Jordan Wolly becoming B'nai Mitzvah by the Wolly/Horowitz Family

PROJECT EZRA

In honor of...

The TBE community for its outpouring of support, love and kindness to Rob throughout the time of his surgery by Marsha Colten & Robert Cohen

INFORMATION FOR YOU...

When making a donation an acknowledgement will be mailed to the designee for donations of \$10 or more. Donations of less than \$10 will be acknowledged only in the Bulletin. All donations will be published in the Bulletin unless you state that you wish to be anonymous.

CONTRIBUTING SHARES OF STOCK TO TEMPLE BETH EL

One way to boost your charitable contributions to Temple Beth El is to give shares of appreciated stock instead of cash. You do not pay any tax on your capital gain, and your charitable deduction is the shares' entire fair market value.

Beth El members may contribute shares of stock to satisfy their dues pledge, their annual fund pledge, and other contributions to the Temple.

After consulting your tax advisor, please contact the TBE office at 203-322-6901.

RABBI JOSHUA HAMMERMAN MITZVAH FUND

In honor of...

The naming of Sydney Maxwell Feld by Gerald Creem

Brooke & Jordan Wolly becoming B'nai Mitzvah by the Wolly/Horowitz Family

Dana Weinberg by the Wolly/Horowitz Family

In memory of...

Adina Linelle Senatore, z'l, and Esther Castro Schmidt, z'l by Alexandra & Richard Senatore

KATIE KAPLAN, CANTORIAL SOLOIST MITZVAH FUND

In memory of...

Harold Fishkow, z'l by Amy Fishkow Benjamin & Jim Benjamin

BETH EL CARES

In honor of...

Our granddaughter, Shaina Eliana Fields becoming a Bat Mitzvah by Caroline Temlock Teichman & Marc Teichman

Robert Cohen for a refuah sheleima by Suzanne & Norman Stone

Samantha Hass on her high school graduation by Suzanne & Norman Stone

EMMET MANHEIM PLAYGROUND FUND

In honor of...

Fredda Goldstein on her special birthday by Ina Smernoff, Shari & Stephen Cohen, Ellen & Jerry Kahan, Arlene & Allen Lebowitz, Ronnee & Larry Lipman, Barbara & Bob Monsour, Shirley & Burt Harris, Phyllis Litwin, Karen & Steve Metzger, Barbara & Doug Lipman, Helen & Bob Kaplan, Zelda & Bob Glass, Roslyn & Richard Woolfe, Joyce Primost, Sue & Jeff Morris, Eileen & Lloyd Lippman, Renee & Larry Wechsler, Carol & Paul Leiman, Linda & Hank Klaiman

Sarah Strom becoming a Bat Mitzvah by the Wolly/Horowitz Family

Brooke Wolly becoming a Bat Mitzvah by Gail, Michael, Brylie & Remy Weinstein, Jenny & Matt Kapszukiewicz, Myrna Ceccorulli, Harriet Mack, Kim Kiner & Bob Mazzone, Jenabeth Ferguson, Ethan Brown & Family, Cali & Larry Tamarkin, Seward Family, Mark Zwiebel, Lori & Fred Geiger, Alexa Isenberg, Lefkovitz-Saltzman Family, Mark, Beth Jake & Evan Wolly, Pegg & Larry Cohen, Lois Stark & Gary Lessen, Jane & Steven Dworkin, Sonia Gupta & Family, Justyna Krzyszpina, Amy & Mel Bloomenthal, Olivia Thomas, Dina Halili

The marriage of Karen Brier & Jared Skoff by Rosemary & Michael Brier

In appreciation for the Lox Box...

Sheila & Gordon Brown, Stanley Novack

In memory of...

Lynn Schacher, z'l by Caryl Ferber Poser & Peter Poser



REMEMBERING OUR LOVED ONES



Robin Evans & Family **BEATRICE ABRAHAM**
 Barbara Shanen **ANN & MAX BENNETT**
 Nancy Greene **ADELE & AUGUST BERMAN**
 Madeleine Sobel & Robert Goldman **CECILE BERMAN**
 Sari & Alan Jaffe **SELMA & EDWARD BLONDER**
 Rae Cohen **CHARLES COHEN**
 Francine & Robert Plansky **MILDRED & JACK COOPER**
 Joan & Robert Rosenthal **HYMAN DOCTOR**
 Beverly Ferber & Family **STANLEY FERBER**
 Joseph Field **BARBARA FIELD**
 Sally & Jim Rothkopf **EMANUAL FRIEDMAN**
 Barbara & Stan Friedman **JACK FRIEDMAN**
 Scott Sekuler **LORRAINE GILLMAN**
 Myra & John Graubard **FLORENCE GRAUBARD**
 Juli Harris **WILLIAM HARRIS**
 Linda Kopel **NORA HECHT**
 Ginette Kellner **FRADLA HOLLAND**
 Leslie Horowitz **CAROLYN HOROWITZ**
 Sari & Alan Jaffe **ROBERT JAFFE**
 Suzanne & Bob Kahn **CAROL KAHN**
 Susan & Richard Blomberg **SELMA & ARNOLD KALISKI**
 Helen & Marty Donner **ISADORE KLEINER**
 Suzanne & Bob Kahn **TILLIE KOHN**
 Susan & Marc Peyser **MARVIN KUCKER**
 Magida Family **ALAN MAGIDA**
 Sandra & David Oberhand **MARGARET MARX**
 Melanie Massell **CLAIRE MASSELL**
 Melanie Massell **MICHAEL MASSELL**
 Ellen & Joel Mellis **SAMUEL MELLIS**
 Sandy & David Moreinis **SAMUEL MOREINIS**
 Ellie Mirne **ESTHER NUSSDORF**
 Lisa & Mitchell Pomerance **WILLIAM POMERANCE**
 Rhonna & Brian Rogol **ALICE ROGOL**
 Joyce & Lewis Slayton **ROSE ROSNER**
 Rosenblum Family **IDA & SAMUEL ROSENBLUM**
 Sally & Jim Rothkopf **DORIS ROTHKOPF**
 Carol & Allen Krim **MAYA SCHWARTZ**
 Carol & Allen Krim **ANNA & LOUIS SEAVER**
 Danielle & Lael Shapiro **HOWARD SHAPIRO**
 Violet Tehrani & Family **NASSER NORMAN TEHRANI**
 Phyllis & Harvey Walzer **SOPHIE WALZER**
 Annbeth Winters **MICHAEL WINTERS**
 Donna Wolff **DAVID WOLFF**

MAHZOR LEV SHALOM DEDICATIONS

In memory of...

Marvin Meth, z'l, Lillie & Nathan Meth, z'l, Rose & Max Gabor, z'l by Jennifer & Harris Meth

Rosalind & Simon Alexander by Barbara & Warren Brandt

WE MOURN THE PASSING OF...

EILEEN EHRLICH, mother of Marisa Siegel
SAMUEL MAYER, husband of Carol Battin
GARY SLAYTON, brother of Lewis Slayton
SANFORD SHINBAUM, father of Joy Schwartz

IN MEMORY OF:

GUS EBEN, z'l

Wolly/Horowitz Family

LYNN SCHACHER, z'l

Susan & Art Greenwald, Liz & Scott Krowitz, Jennifer & Harris Meth, Stacy & Don Cooper, Jill & Jeff Blomberg, Nancy & Gadi Mimoun

SYBIL ZEIDMAN, z'l

Stacy & Don Cooper, Miriam & Michael Schechter, Amy & Mel Bloomenthal, Marsha Colten & Robert Cohen

PHYLLIS KAHN, z'l

Debby & Jack Goldberg

GENEVIEVE WEINGRAD, z'l

Debby & Jack Goldberg

HERBERT KAHAN, z'l

Shirley & Bill Sklar

CAROL HOFFMAN, z'l

Marsha Colten & Robert Cohen

SONDRA GOLD, z'l

Rosalea & Dick Fisher, Roni & Alan Lang

DAVID BRODY, z'l

Debora & Paul Weinstein

EILEEN EHRLICH, z'l

Suzanne & Rob Fruithandler

HOWARD GUNTY, z'l

Eileen & Fred Springer

MATTHEW KLEIN MEMORIAL GARDEN

In memory of...

Ruth Robbins, z'l by Lori & Stuart Ratner

RELIGIOUS SCHOOL FUND

In memory of...

Jeanette Fishskow, z'l by Amy Fishkow Benjamin & Jim Benjamin

FRANK AND ROSE ROSNER MEMORIAL FUND

In memory of...

Gary Slayton, z'l by Jodi Maxner & David Rauch, Marcia Braunstein, Susan & Art Greenwald, Rosalea & Dick Fisher, Peggy & Alan Kalter, Barbara Muller & John Romanow, Marsha Colten & Robert Cohen, Maxine & Jay Freilich, Linda & Joe Rothman, Susan Frieden, Beth El Cemetery Association, Barbara & Warren Brandt, Sari & Alan Jaffe, Evelyn & Bruce Kahn

YOUTH PROGRAMING FUND

In memory of...

Samuel Kveskin, z'l by Ilene & Jim Locker & Family

SHIVA NOTICES AVAILABLE ON-LINE

Congregants who are looking for shiva information can now quickly look online instead of searching their inbox for the announcement or calling the synagogue office. Just go to TBE's website (www.tbe.org) and click "Shiva Notices" under the WHAT'S NEW menu.

together in government, in the cause of the greater Israeli good. While the ultra-Orthodox political apparatchiks have declared religious war on it, many key members of the "change government" have set it up with an almost messianic vision of internal Israeli right-left, Orthodox-secular, Jewish-Arab harmony. However hard this will prove to maintain, the very goal marks a laudable departure from Netanyahu's divisive approach to retaining power.

During the summer – this year on July 19 – our calendar always returns us to the Fast of Tisha B'Av, with its focus on the destructions of the ancient temples. Chief among the causes for these debacles, according to the rabbis, was "Sinat Hinam," "causeless hatred." If causeless hatred has a cause, it is extremism.

Lapid wrote in his undelivered Knesset speech:
After all the insults and the warnings, the real divide in Israeli society isn't between left and right. The real divide is between moderates and extremists. Those who want to build and those who want to destroy. We will not let the extremists destroy the State of Israel. We will not let hate control us. Violent racists don't become patriots just because they wrap themselves in a flag. They will not define for us what it means to love Israel.

Lapid and his counterparts in America and everywhere are responding to the populist-driven enmity of the past several years, fighting the hate wherever it is found - and slowly, slowly, the forces of love and moderation are winning.



Have a great summer – and don't forget to pack your moral compass!

Rabbi Joshua Hammerman

mentioned. But there are a few more that have really worked closely with me to keep me sane and Temple Beth El sound. Steve Sosnick and Mia Weinstein, who served as my advisors this past year. You have been generous with your advice and wisdom. Carl Weinberg, Immediate Past President - I know your title says past president, but the amount of work you have done this year and the selfless way you have advised me makes me want to call you Past-ish President. You are the best, and you have the bobblehead to prove it. Scott Krowitz, you have been a true partner this year and I am so grateful you agreed to be my first VP. Sucker. You keep me grounded when I get frustrated, and you are always able to see the big picture: Doing what is best for Temple Beth El. Thank you for your partnership.

Finally, I am especially proud of a particularly beautiful rose that has risen up at TBE through the hardest of concrete: Emmet's Playground. This legacy to our beautiful boy, a true son of TBE, has already brought joy to so many children which, in turn, has brought comfort to Jeff and me. So many of you contributed to the building of this place and Jeff and I are so grateful to you. We hope the playground also sends a loud and clear message to all who drive into our parking lot: Temple Beth El is a place for children, where they can grow and thrive and play and learn. My enormous and most heartfelt thanks to my partner in life, Jeff Manheim, who brings me tea during Zoom meetings, takes care of our dog, cooks me delicious meals, and supports me in a thousand other ways which allow me to focus on the work of helping Temple Beth El be the wonderful place it is. Jeff, you are as much a part of the success of Temple Beth El as anyone else.

Of course, there are so many other successes this year, many of which you will hear about in the reports tonight or read about in the written reports. I'm not trying to paint a perfectly rosy picture about Temple Beth El - we have a lot of work to do as we fully reopen our building and reimagine some of what we've lost this past year. But with a community like ours - a garden of people who rise up despite the concrete around us - I am confident that we will meet all of our goals and then some.

Lisa Manheim, President

Get involved, please...

Help Wanted! In order to maintain our vibrant and dynamic community, the Fund-Raising Committee needs more members to support TBE and volunteer their skills and talents. Many of these opportunities ask for very small-time commitments. Please consider getting involved with the:

Annual Appeal | Temple Rock | Cantor's Concert
If you are interested in volunteering, please contact us and we will give you more information.

Thank you!

Art Laichtman
Fund-Raising Chair
aelaichtman@optimum.net

Special Occasion?

Sponsor The Shabbat E-nnouncements
(sent every week via e-mail)

The Shabbat Announcements
(distributed each Shabbat at the Temple)
and the Shabbat-O-Gram
(e-mailed every Thursday night)

All three publications for \$72

All sponsors will be acknowledged at the beginning of each of these announcements and also listed in our bi-monthly Bulletin.

Call Mindy in the office at 322-6901 ext. 301.

HAVE YOU VISITED OUR WEBSITE?

www.tbe.org

Find out about the latest news and upcoming activities ... access our online membership directory ... register for events and make donations ... connect to TBE's Twitter and Facebook pages ... and much more.

DID YOU KNOW?

TBE offers free family membership for the first year to any member's child on the occasion of his or her marriage. For more information, contact Steve Lander at 203-322-6901, ext. 304.



MEMORIAL PLAQUES



Inscribe the names of your loved ones on a plaque for our Chapel wall along with a light to commemorate their *yahrtzeit* and *yizkor* observances throughout the year.

For details, contact Mindy at office@tbe.org or 203-322-6901, ext. 301.

HOW WILL YOU ASSURE JEWISH TOMORROWS?



Commit to leaving a legacy and help ensure that Temple Beth El will be part of the fabric of the Stamford Jewish community for many years to come.

TEMPLE BETH EL
350 Roxbury Road
Stamford, CT 06902
www.tbe.org



To create your legacy contact Steven Lander
execdir@tbe.org | 203-322-6901, ext. 304

Your Hometown Jewish Funeral Home.
Locally owned and operated by Tom Gallagher.

203.324.4494

Our family proudly serving your community for generations.

- Private Tahara Room
- Shomer Available

- Graveside Services
- Livestream Service Available

- International & Domestic Transportation
- Serving All Cemeteries



Thomas M. Gallagher
Owner & Funeral Director

104 Myrtle Avenue, Stamford, CT 06902 | 203.324.4494
info@sholomchapel.com | www.SholomChapel.com

**We Capture Your
Precious Memories on Video...
Weddings ♦ Bar/Bat Mitzvahs**

Proud to be the official TBE videographer

*Tom was able to capture the spirit and joy of our
B'nai Mitzvah service and party in a video we
will always treasure. He was also a pleasure to
work with from start to finish.*

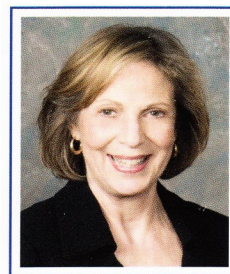
Jared Finkelstein

*If you are looking for a videographer, look no
further! Tom was a delight to work with and the
finished product was incredible. He created
separate videos of my daughter's Bat Mitzvah
service and celebration and captured all
aspects of the joy of the day.*

Jill Teich

Thomas Pace, Jr. ♦ 203.335.0168
T & J Video Service

We also transfer home movies/video to DVD.



MADDY SHAPIRO
Sales Associate
REALTOR® of the Year 2011
203-940-5569 CELL
203-329-9792 HOME OFFICE
Maddy.shapiro@cbmoves.com



Operated by a subsidiary of NRT LLC

www.maddys Shapiro.com

FETHI PHOTOGRAPHY

cell: 914-629-2204

fethic@me.com

www.fethiphotography.com

Experience working with TBE for over 25 years.

Ask your friends!



A Full Service Production Company:

- Event Decor
- Event Management
- Live Sound
- Video and Photography
- Rigging and Staging
- Webcasting
- Lighting
- Non-Profit Events
- Trade Shows and Product Launches
- A/V Equipment Rental
- Drone Imagery Services

25 Viaduct Road Stamford, CT 06907 P: (203) 517-4688
www.kpeventsgroup.com

aviva maller
P H O T O G R A P H Y

60 MAC ARTHUR LANE
STAMFORD, CT 06902
203-322-0459
avivamaller@aol.com

Check out our special website
Dedicated to TBE's event space

www.thebigeventspace.com

Please let your friends and business
associates know how we can fulfill their
celebratory and meeting needs.

ART GREENWALD

President

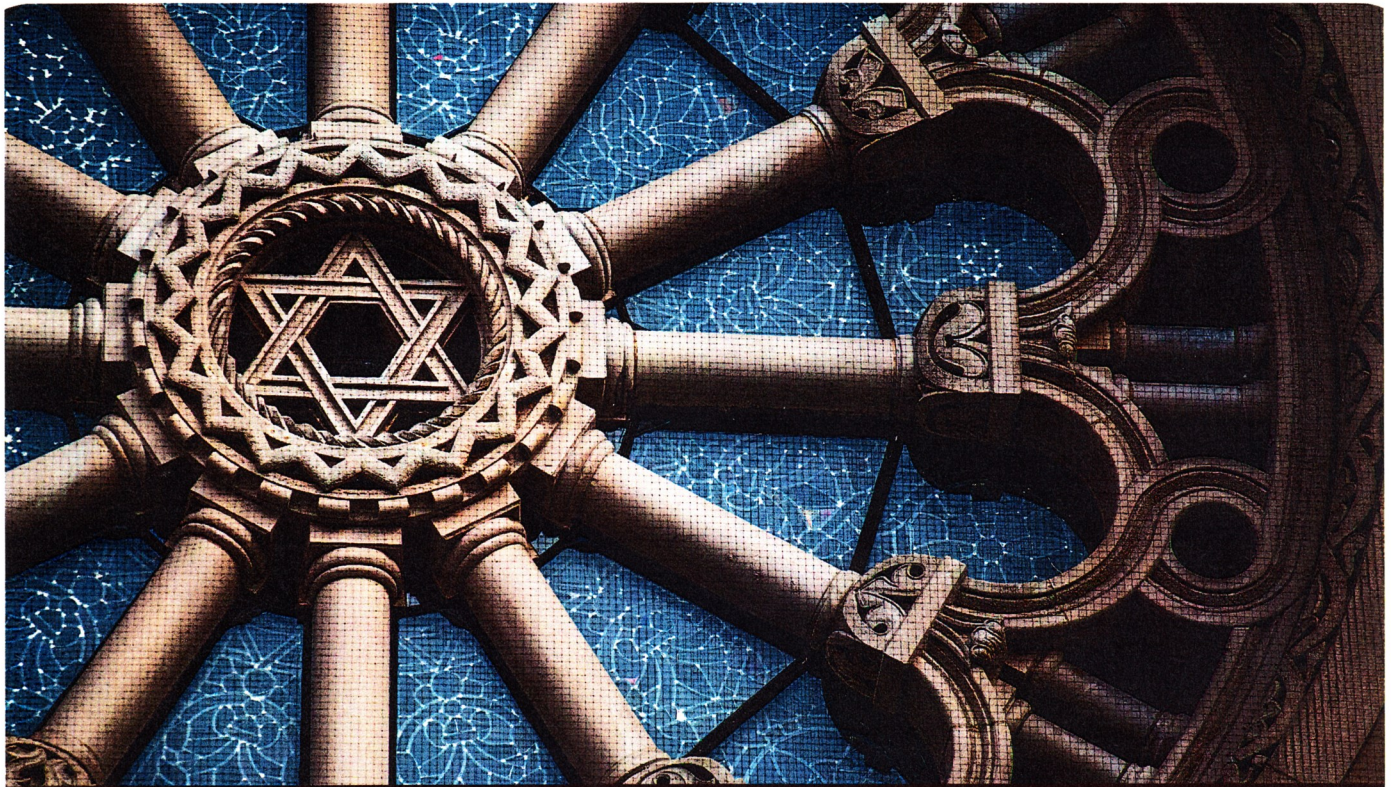
INTEGRATED PROTECTION SERVICES, LLC
320 Boston Post Road, Suite 140 DARIEN, CT 06820
Tel: 203.322.0772

WWW.INTEGRATEDPROTECTIONSERVICES.COM

**SYSTEMS AND SERVICES FOR SECURITY
AND FIRE PROTECTION**

SERVING CONNECTICUT AND NEW YORK
COMMERCIAL AND RESIDENTIAL





TAKING CARE OF EACH OTHER
is what community is all about.

WE'RE PROUD TO SERVE our community with personal, compassionate care.
As your Dignity Memorial® professionals, we're dedicated to helping families create
a unique and meaningful tribute that truly honors the heritage of the Jewish faith.

We invite you to contact us today to learn more.

Dignity®
MEMORIAL

✧ LIFE WELL CELEBRATED™ ✧

LEO P. GALLAGHER & SON

FUNERAL HOME

STAMFORD

203-327-1313 LeoPGallagherStamford.com

TEMPLE BETH EL
350 Roxbury Road
Stamford, CT 06902

Non-Profit
U.S. POSTAGE
PAID
STAMFORD, CT
PERMIT NO. 42



CHECK US OUT ON
facebook

JULY/AUGUST 2021

HIGH HOLY DAYS 2021/5782

Erev Rosh HashanahMonday, September 6, 2021
Rosh Hashanah, First Day Tuesday, September 7, 2021
Rosh Hashanah, Second DayWednesday, September 8, 2021
Kol NidreiWednesday, September 15, 2021
Yom Kippur Thursday, September 16, 2021

