

## Zoom Passover Seder



## Temple Rock 2022



**TEMPLE BETH EL - BOARD OF TRUSTEES****EXECUTIVE COMMITTEE**

Lisa Manheim, President	917-690-2712
Carl R. Weinberg, Imm. Past President	203-322-8675
Scott Krowitz, First Vice President	917-902-1447
Stan Friedman, Vice President	203-322-0416
Devra Jaffe-Berkowitz, Vice President	203-978-1113
Arthur Laichtman, Vice President	203-461-8223
Christopher Maroc, Vice President	914-215-2025
Julie Rosenberg, Vice-President	203-975-8880
Daniel Young, Vice President	203-975-1990
Robert S. Cohen, Treasurer	203-329-9622
Susan Frieden, Assistant Treasurer	203-869-4282
Emily Klein, Secretary	347-901-0228

**ADVISORS**

Dana L. Horowitz	203-321-0018
Mia M. Weinstein	203-595-0528

**TRUSTEES**

Debra Adler-Klein	203-253-1664
David Amsellem	203-832-4335
Lori Bushell	203-962-2974
Jeffrey Cohen	203-358-9911
Kahla Cooper	203-554-7888
Jon Eisenstein	203-321-8369
Leslie Glenn	203-273-7215
Susan Greenwald	203-322-0771
Michael Handel	203-981-1987
Erica Pomerantz	203-223-7359
Irma Ross	203-246-4880
Barbara Rothstein	203-614-8053
Judy Schneiderman	203-569-4969
Eric Sigman	917-974-8595
I. Jeffrey Turshen	203-323-3872

**SISTERHOOD PRESIDENT**

Karen Resnick	203-536-3115
---------------	--------------

**MEN'S CLUB PRESIDENT**

Josh Levine	203-276-4935
-------------	--------------

**PAST PRESIDENTS**

Gordon Brown	203-276-8688
Rosalea Fisher	203-323-1449
Fred S. Golove	203-322-0295
Alan Kalter, z'l	
Peter K. Kempner	203-968-8079
Mark Lapine	203-329-9879
Gary P. Lessen	203-322-7617
Sylvan D. Pomerantz	203-968-0605
Brian Rogol	212-531-8203
Eileen H. Rosner	203-461-0506
Mia M. Weinstein	203-595-0528

**WHERE TO FIND IT**

Joshua Hammerman, Rabbi.....	Page 3
Katie Kaplan, Cantor .....	Page 3
B'nai Mitzvah .....	Page 5
May-June Service Schedule .....	Page 6
Sisterhood .....	Page 9
TBE Clubs .....	Page 10
Beth El Cares.....	Page 15

**COMMITTEE CHAIRPERSONS****Board of Education**

Kahla Cooper.....	203-554-7888
-------------------	--------------

**Empty Nesters**

Sue and Carl Shapiro.....	203-353-0657
---------------------------	--------------

**Finance**

Robert S. Cohen.....	203-329-9622
Susan Frieden.....	203-869-4282

**Fund Raising**

Arthur Laichtman.....	203-461-8223
-----------------------	--------------

**High Holy Days Task Force**

Devra Jaffe-Berkowitz .....	203-978-1113
-----------------------------	--------------

**High Holy Days Food Drive**

Sharon Turshen.....	203-323-3872
---------------------	--------------

**Human Resources**

Carl Weinberg .....	203-322-8675
---------------------	--------------

**Marketing and Communications**

Stan Friedman.....	203-322-0416
--------------------	--------------

**Membership Committee**

Chris Maroc .....	914-215-2025
-------------------	--------------

**Project Ezra**

Joy Katz .....	203-329-3359
----------------	--------------

**Reyut Committee**

Melanie Massell .....	203-324-7190
-----------------------	--------------

**Ritual Committee**

Devra Jaffe-Berkowitz .....	203-978-1113
-----------------------------	--------------

**Social Action Committee**

Julie Rosenberg .....	203-975-8880
-----------------------	--------------

**Tzedek Committee**

Julie Rosenberg .....	203-975-8880
-----------------------	--------------

**Immigration Task Force**

Belle Horwitz.....	203-968-1296
--------------------	--------------

**OUR STAFF IS MOST EAGER TO ASSIST YOU****Monday-Thursday, 9am-5:00 pm | Friday, 9am - 2:00pm****Phone: 203-322-6901 Fax: 203-322-0532**

Joshua Hammerman, Rabbi (rabbi@tbe.org)	ext. 307
Katie Kaplan, Cantor (cantor@tbe.org)	ext. 315
Sidney G. Rabinowitz, Hazzan Emeritus (hazzan@tbe.org)	ext. 309
Steven Lander, Executive Director (execdir@tbe.org)	ext. 304
Lisa Gittelman-Udi, Director of Congregational Learning (eddir@tbe.org)	ext. 305
Rabbi Gerry Ginsburg, Assoc. Rabbi (rabbiginsburg@tbe.org)	ext. 300
Linda Rezak, Bookkeeper (lindar@tbe.org)	ext. 302
Mindy Rogoff, Temple Secretary (office@tbe.org)	ext. 301
Alberto Eyzaguirre, Facilities Manager (maint@tbe.org)	ext. 314



## Our “Hybrid” Year

It's been a strange year. One might classify it as “hybrid” year, not only because of the bifurcated nature of our experiences – in person and online – but because we have had to shift focus so often, whether to adjust to new challenges from Covid, or challenges to conscience, such as the invasion of Ukraine. Or the resultant challenges to our unity, stability, and even, to a degree, our sanity, posed by all these other challenges.

The sweeping social changes that we are experiencing – including more people working from home or quitting their jobs altogether, rapidly rising costs and the increased risks from illness, loneliness and rage – these are bad enough. But add to all of them the unique trials synagogues confront these days. Imagine. We finally return to some semblance of in-person normalcy, only to have to undergo special security drills because of the growing threats of violence directed against Jews. So, our “reward” for coming back to the building is the increased possibility of being physically attacked, rather than simply being Zoom-bombed. The ADL declared that 2021 was “an all-time high” for antisemitic incidents in the US, and 2022 looks like it might give 2021 a run for its money.

In the midst of all this confusion and craziness, *The Atlantic* came out with a notable essay entitled, “[WHY THE PAST 10 YEARS OF AMERICAN LIFE HAVE BEEN UNIQUELY STUPID](#),” which lays out an impressive case for the stupefying consequences of social media. But for me, the blunt rudeness of the title, implying that we are now, officially, a dumb-as-a-doornail nation, is itself a consequence of the past two years of crazy that we have not yet emerged from. For the sake of clickbait, we've forgotten how to be tactful even in the titles of our otherwise thought-provoking articles.

I look at this and it is no wonder that so many of my clergy colleagues have thrown up their hands and are leaving pulpits in unprecedented numbers, and that prestigious seminaries like Hebrew Union College in Cincinnati have shuttered their doors amidst rapidly declining enrollment.

But despite these trends, and all the craziness, synagogues are needed more than ever. Clergy and laity alike shouldn't be running away from them. We should be running toward them. You need us. We need us. And we need you.

Whether in person or online, we at TBE have been an oasis amidst the gathering storms (and they're not really gathering; they're already here). The UN says we'll have 30 percent more catastrophic storms – [560 every year – by 2030](#)). Our Zoom Seder was a perfect example. We were not expecting large numbers, given the low rates of transmission at the time. But the transmission rate must have been higher than advertised, because we got a number

*Continued on page 13...*

The Long and Winding Road  
A Cantor's Concert and Installation

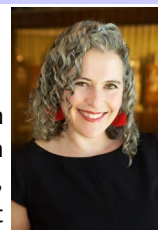
A journey begins and sometimes we can travel for quite a while before we realize in which direction we are actually moving. In fact, the journey of a lifetime is one that doesn't even have a particular final destination, but rather many different reflection points along the way. We resist and surrender in cyclical phases and I have come to discover that as much as we think we are shaping the road we travel, we are also being shaped by the road. As we begin to turn the corner through the COVID pandemic, I am completing two years serving in the role of Cantor at Temple Beth El. I find it the perfect time to musically reflect on “The Long and Winding Road” that led me through the doors and onto the bimah of Temple Beth El.

This Cantor's Concert will take the audience on an eclectic ride of musical styles and influences along the road of my life from childhood through the present. From campfire, to opera, jazz, rock, pop, folk, and my own compositions, this concert will share a taste of everything. As part of the concert and ceremony, I will be joined by Cantor Deborah Jacobson who is my dear friend, former Cantor at TBE, and one of my first inspirations to journey in the direction of the cantorate. Also joining us in song and ceremony will be Rabbi Hazzan Luis Cattan, my mentor, friend, Cantor of The Conservative Synagogue of Westport, and current President of the Cantors Assembly. Together, we will sing and celebrate the mutual commitment between cantor and congregation as I am officially and ceremoniously installed at Temple Beth El.

I am excited to be joined in concert by an outstanding band of musicians, featuring TBE's beloved Chris Coogan (keys) and Koby Hayon (guitar, oud) along with Benny Koonysky (drums), Mike Kuennen (bass), and Efrat Shapira (violin). Together we will lead you on a journey that is personal, relatable, inspiring, and shares the common reflection point here as a congregation *L'dor vador*, as I am Installed as Temple Beth El's Cantor.

I hope that you will all join us on The Long and Winding Road, as we sing, play, reflect and celebrate on Thursday, June 2nd at 7pm at Temple Beth El. This concert will be presented live and also on Livestream.

*Cantor Katie Kaplan*



## WOULD YOU LIKE TO BE A GABBAI?



Training available!

Please contact Rabbi Hammerman  
at [rabbi@tbe.org](mailto:rabbi@tbe.org).



NORMA AND MILTON MANN MEMORIAL TBE CANTOR'S CONCERT

# *The Long and Winding Road*

*Featuring Cantor Katie Kaplan with special guests  
Cantor Deborah Jacobson and Rabbi Hazzan Luis Cattan,  
and musicians Chris Coogan, Koby Hayon,  
Benny Koonyevsky, Mike Kuennen, and Efrat Shapira.*



**Thursday, June 2, 2022 at 7 p.m.**

*Honoring Cantor Kaplan on her  
Installation as the Cantor of Temple Beth El*

TEMPLE BETH EL

350 Roxbury Road, Stamford Connecticut • (203) 322-6901

General admission by May 26: Tickets \$36 • Students \$10

At the door: Tickets \$45 • Students \$18

*Also available via a livestream.*

*To purchase tickets or place an ad in the Journal, go to [www.tinyurl.com/tbecc2022](http://www.tinyurl.com/tbecc2022)  
or complete and return the enclosed card.*

*For further information, call 203-322-6901, ext. 301 or [office@tbe.org](mailto:office@tbe.org)*



### MAZAL TOV TO...

*Lori and Bruce Tobin on the birth of a granddaughter, Mila, born to Silvana and Brad Tobin.*



Share your family's simcha (engagement, marriage, birth, Bar or Bat Mitzvah of a child or grandchild) and other joyous event. Just contact the TBE office at [office@tbe.org](mailto:office@tbe.org) or 203-322-6901, ext. 301.

### HONORABLE MENSCHEN TODAH RABAH TO OUR TORAH READERS!

RABBI GERRY GINSBURG ★ RABBI JOSHUA HAMMERMAN  
BERT MADWED ★ LEO MAHLER ★ NAOMI MARKS  
ANYA NADEL ★ SUSAN SCHNEIDERMAN  
JAKOB ZELAZNY

### THANK YOU FOR SPONSORING THE SHABBAT ANNOUNCEMENTS

JILL SWARTZ NADEL and MITCH NADEL  
STEPHANIE and DAN ZELAZNY

### THANK YOU FOR SPONSORING KIDDUSH AND THE ONEG

JILL SWARTZ NADEL and MITCH NADEL  
STEPHANIE and DAN ZELAZNY

### HAVE YOU VISITED OUR WEBSITE?

[www.tbe.org](http://www.tbe.org)

Find out about the latest news and upcoming activities ... access our online membership directory ... register for events and make donations ... connect to TBE's Twitter and Facebook pages ... and much more.

### TBE UPDATES COVID-19 GUIDELINES

The TBE Reopening Committee has modified the set of COVID-19 guidelines governing in-person, onsite activities held at the synagogue. These changes are based on current guidance/regulations from federal, state and local public-health agencies, as well as best practices at other religious institutions.

To view the guidelines, please go to [tbe.org/covid-guidelines](http://tbe.org/covid-guidelines).

The Reopening Committee is chaired by Past-President Gary Lessen and comprised of congregants with medical, safety and other needed areas of expertise.

### B'NAI MITZVAH

May 21

#### JACOB LEDERMAN

Son of Aviva and Greg  
Brother of Daniel  
Attends Roton Middle School  
Mitzvah Project: Open Door Shelter



May 28

#### BENJAMIN WINARSKY

Son of Robyn and Mark  
Brother of Madeline  
Attends St. Luke's School  
Mitzvah Project: David's Treasure Chest Toy Closet



June 18

#### XAVIER MARKS

Son of Naomi Marks and Jonathan Marks  
Brother of Sydney  
Attends Dolan Middle School  
Mitzvah Project: PAWS



### Special Occasion?

**Sponsor The Shabbat E-announcements**  
(sent every week via e-mail)

**The Shabbat Announcements**  
(distributed each Shabbat at the Temple)  
**and the Shabbat-O-Gram**  
(e-mailed every Thursday night)

**All three publications for \$72**

**All sponsors will be acknowledged at the beginning of each of these announcements and also listed in our bi-monthly Bulletin.**

**Call Mindy in the office at 322-6901 ext. 301.**



## SHABBAT AND FESTIVAL SERVICES



Shabbat and Festival morning services will be held on Zoom.

Please check the weekly Shabbat Announcements for the venue of Friday night services.

### MAY

**Friday, May 6**

Kabbalat Shabbat 6:00 p.m.  
MEDITERRANEAN SHABBAT

**Shabbat, May 7**

Shabbat Service 10:00 a.m.  
SISTERHOOD SHABBAT  
ShaBaBimBam 11:00 a.m. in the Club House

**Friday, May 13**

Kabbalat ShaBaBimBam 5:30 p.m.  
Kabbalat Shabbat 6:00 p.m.

**Shabbat, May 14**

Shabbat Service 10:00 a.m.

**Friday, May 20**

Kabbalat Shabbat 6:00 p.m.  
Family Shabbat Service

**Shabbat, May 21**

Shabbat Service 10:00 a.m.  
JACOB LEDERMAN, BAR MITZVAH

**Friday, May 27**

Kabbalat Shabbat 6:00 p.m.

**Shabbat, May 28**

Shabbat Service 10:00 a.m.  
BENJAMIN WINARSKY, BAR MITZVAH

### JUNE

**Friday, June 3**

Kabbalat Shabbat 6:00 p.m.

**Shabbat, June 4**

Shabbat Service 10:00 a.m.  
ShaBaBimBam 11:00 a.m.

**Sunday, June 5 - Shavuot 1st day**

Shavuot Service 10:00 a.m.

**Monday, June 6 - Shavuot 2nd day**

Shavuot Service 10:00 a.m.

**Friday, June 10**

Kabbalat Shabbat 6:00 p.m.

**Shabbat, June 11**

Shabbat Service 10:00 a.m.

**Friday, June 17**

Kabbalat Shabbat 6:00 p.m.

**Shabbat, June 18**

Shabbat Service 10:00 a.m.  
XAVIER MARKS, BAR MITZVAH

**Friday, June 24**

Kabbalat Shabbat 6:00 p.m.

**Shabbat, June 25**

Shabbat Service 10:00 a.m.

# Join Us! ANNUAL MEMBERSHIP MEETING

## Wednesday, May 6 at 7:30pm

In the TBE Social Hall

- ◇ Reports from TBE lay leadership and professional staff
- ◇ Vote on the election of new members to the Board of Trustees
- ◇ Presentation of the Fred Weisman Tikkun Olam Award
- ◇ Presentation of Teen Volunteer Award
- ◇ Religious School Aliyah Service - Class of 2022
- ◇ Montage - Year in Review
- ◇ Refreshments and more...



## IMPORTANT NEWS

### WE'RE MOVING TO SHULCLOUD

We're excited to announce that Temple Beth El is in the process of migrating to a new online membership database and portal – ShulCloud. This powerful platform, used by over 1300 synagogues around the world, will allow us to provide you with a series of benefits we've been unable to offer previously. It also provides significant administrative benefits to our TBE clergy and staff.



With a few clicks of your mouse (or taps on your tablet or mobile device), you'll have the ability to easily manage, update and view detailed information about your synagogue account. For example, you'll be able to:

- Manage and update individual and family profiles, including contact details, photos, birthdays, anniversaries and yahrzeits.
- Make donations and send electronic messages to the person you are honoring.
- Register for TBE events.
- View transaction history, set up recurring payments and pay balances.
- Securely provide and store credit card information using an encrypted PCI-compliant payment gateway.

Some of these features, as well as other more advanced capabilities, will be phased in over time as we learn how to best use the wide array of tools ShulCloud offers.

We also know new technology can be overwhelming at first, so the migration team is creating "getting started" guides and Zoom classes for those who might need assistance.

Watch your electronic Inbox for more information as we begin to roll out ShulCloud to the TBE congregation in the mid-April timeframe.

## YOUNG FAMILIES

### TBE ShaBaBimBam

**A Shabbat program for families with children 5 and younger (older siblings welcome!)**



### Shabbat Mornings 11:00am



**Led by Natasha Fenster  
and Steve Epstein!**

**May 7, 2022  
June 4, 2022**

**MAY 7**

**We will meet in the Club House.**

**Questions?**

**Contact [office@tbe.org](mailto:office@tbe.org)**

**Temple Beth El**

**350 Roxbury Road, Stamford, CT**

**203-322-6901 | [www.tbe.org](http://www.tbe.org)**

**[facebook.com/youngfamiliesTBE](https://facebook.com/youngfamiliesTBE)**

## TBE YOUNG FAMILIES PRESENTS...

### bagel babies

**A monthly program for parents  
and babies ages 0-2**

**Sunday, May 27 at 10:00am  
At Emmet's Playground**

**Bagels, coffee and camaraderie!**

**For TBE members and non-members.**



## KABBALAT SHABABIMBAM

**Friday, May 13 at 5:30pm  
in the Club House**



**Immediately followed  
by a kid-friendly Shabbat dinner.**

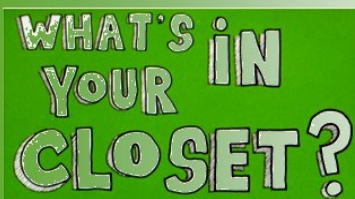
**For families with children 5 and younger  
(older siblings welcome)**

**RSVP at [www.tinyurl.com/sbbb5-13](http://www.tinyurl.com/sbbb5-13)**

**No charge to attend, but please register so  
enough food is ordered.**

**TBE membership not required. All are welcome!**





## TBE SISTERHOOD ANNUAL CLOTHING DRIVE

*Do a mitzvah!*

**Sunday, May 22 from 10:00am - Monday, May 23 at 10:00am**

Volunteers will be there to help on Sunday from 10am-12pm, but you may drop off any time until May 23 at 10:00am

**Please drop-off at the loading dock, by the dumpsters.**

**NEW FOR THIS YEAR:** As a donation we will be collecting shoes, sneakers and bras in a separate box for Joy Katz' container which will be sent to Africa. Shoe laces must be tied together.

**GOT AN IPOD YOU ARE NO LONGER USING?** Let's give them a new home and help bring music to those in need. We are collecting old iPods and chargers for Music & Memory - serving elderly individuals with Alzheimer's and dementia through music therapy.

**Items to Donate:** Usable and wearable clothing and shoes for all seasons and all sizes for men, women, kids, pocketbooks, belts, baby accessories, backpacks, hats, scarves, briefcases, gloves, ties, handbags, blankets, tablecloths, bed sheets, drapery, curtains, pillows, towels, quilts, comforters, stuffed animals and bicycles.

**Items NOT accepted:** car seats, cribs, hair dryers, mattresses, pack & plays, baby walkers, baby bath seats, toys with lead, hard toys, VHS tapes, CDs, books, box TVs/monitors, oversized play sets or outdoor play sets. Workout/exercise equipment, appliances, furniture, lamps, house decor, board games, electronics, glassware, pots, pans, rugs, baby gear.

**IMPORTANT INFORMATION: PLEASE READ**

**•Put all items into tightly tied plastic bags.** Shoes laces must be tied and shoes bagged separate from clothes. Bicycles and scooters may be dropped off without being packaged or wrapped.

Questions? [sisterhood@tbe.org](mailto:sisterhood@tbe.org)

**SISTERHOOD THANKS YOU FOR YOUR DONATIONS  
AND ENTHUSIASM TO HELP OTHERS IN NEED!**

We will receive money for every pound we collect.  
The money raised will be used for Sisterhood/TBE programming.  
Your donations will help deserving families in the USA and abroad.

**You will receive a tax form for all items donated.**





Spring is finally here, and Sisterhood continues to have many activities through the end of this fiscal year. We are in good financial shape due to all of you. Your Sisterhood membership of \$36 is hard at work. Thank you to over 220 Sisterhood members!

#### RECENT ACTIVITIES

We had over 25 people attend our **Paper Cutting Workshop** for Purim on Zoom in our first partnership with the Sisterhood of Temple Sinai. The teacher zoomed in from Israel!

Sisterhood's **Annual Passover Food Sale** brought you delicious, kosher for Passover food prepared by W Kasher Events. Over 50 families placed orders with rave reviews! Thank you to **Donna Wolff, Lisa Grove-Raider, Judy Schneiderman** and **Eileen H. Rosner** for helping to distribute food. Thanks also to **Mindy, Linda** and **Steve** for helping to keep track of all the details.

**Brunch is on Us! Lox and Bagels** Sponsored by TBE Men's Club and Sisterhood. Money was raised for BE THE MATCH in memory of Emmet Manheim, z'l.

#### UPCOMING EVENTS:

**May 1 at 10:45am** TBE Sisterhood and Men's Club will host **A Capella Brunch** with the SUNY Binghamton Jewish A Capella group "Kaskeset," featuring the kids of TBE.

**Friday, May 6 at 6:00pm Mediterranean Shabbat** - Join Rabbi Hammerman and Cantor Kaplan in a special Kabbalat Shabbat service, with wonderful musical guests and an oneg of falafel, hummus and baklava. Sponsored by Sisterhood.

**May 7 at 10:00am Sisterhood Shabbat Service** - Thanks to **Fran Ginsburg** for chairing this event. See Shabbat Announcements for details.

**May 22 at 10:00am Spring Clothing Drive** (ends Monday, May 23 at 10 am). This year in addition to clothes, we are collecting bras and shoes which will sent to Africa in a container donated by Joy Katz. Please tie shoes together and leave near the appropriate sign.

**June 2 at 7:00pm Annual Cantor's Concert** Sisterhood donates to the concert each year.

Need a gift? Bagel scoopers (\$10) and cookbooks (\$6) are still available at the TBE office.

Thanks always to the Sisterhood Board and **Steve, Mindy, Linda, Rad** and **Alberto** for continuing to answer all my questions and making it so easy to be Sisterhood President. Please contact me ([sisterhood@tbe.org](mailto:sisterhood@tbe.org)) if you are interested in becoming a Board member of Sisterhood. If you have new ideas or would like to volunteer, we would love to have you join us – it is a great way to meet people!

With thanks, appreciation and friendship,  
*Karen Resnick, Sisterhood President*

Please contact Sisterhood at [sisterhood@tbe.org](mailto:sisterhood@tbe.org) or feel free to call/email a Sisterhood board member with any comments. We love hearing from you and are always looking for volunteers!

**Karen Resnick, President**

203-536-3115, [kmr925@sbcglobal.net](mailto:kmr925@sbcglobal.net)

**Judy Schneiderman, Treasurer**

203-569-4969, [judy2125@optimum.net](mailto:judy2125@optimum.net)

**Dora Salm, Secretary**

203-461-8596, [d\\_salm@yahoo.com](mailto:d_salm@yahoo.com)

**Amy Davidson, Corresponding Secretary**

203-274-6363, [adavidson303@gmail.com](mailto:adavidson303@gmail.com)

**Marian Bauer** 203-322-0843, [mjbauer27@gmail.com](mailto:mjbauer27@gmail.com)

**Lisa Grove-Raider** 203-376-8709, [lgroveraider@gmail.com](mailto:lgroveraider@gmail.com)

**Juli Harris** 203-276-0589, [jaharris99@aol.com](mailto:jaharris99@aol.com)

**Nancy Kapchan** 203-435-0389, [ngkapchan@gmail.com](mailto:ngkapchan@gmail.com)

**Naomi Marks** 203-273-4650, [nsobel@hotmail.com](mailto:nsobel@hotmail.com)

**Paula Shulman** 203-461-9396, [paulashulman51@gmail.com](mailto:paulashulman51@gmail.com)

**Beth Silver** 203-249-7046, [beth@silverconsulting.net](mailto:beth@silverconsulting.net)

**Donna Wolff** 917-601-1878, [donnawolff27@gmail.com](mailto:donnawolff27@gmail.com)

#### Tent to Be Constructed in Memory of Alan Kalter, z'l

On Wednesday, May 4 the Temple will construct a 40' x 60' tent with cathedral windows and removable side walls, in memory of Alan Kalter, z'l, on the lawn where we hold BBQ and Barachu.

The tent will be used for outdoor events, classes, programs, Religious School, and services, and will be made available for community programs.

The tent has already been paid for, but we are now raising funds for a non-slip plastic floor with drains, lights and heaters.

To donate, please [click here](#).



## TBE CLUBS

TBE Clubs is a TBE initiative that engages small groups of congregants in meaningful activities that fuel the body and inspire the soul. Equally important, TBE Clubs act as a way by which congregants can pursue their passions and find new friends within the synagogue community.

Here is a current list of available clubs, which can also be found on the TBE website at: <https://www.tbe.org/tbe-clubs/>. TBE members interested in joining a club should reach out to the club's point person for more information. If you have any questions or have an idea to start your own club, new clubs will be forming in Fall 2021 - more information coming soon!

### PROFESSIONAL NETWORKING CLUB (See page 10)

TBE is looking to launch a Professional Networking Club. In an effort to develop a robust start, we are looking to create a database to assist other members. This professional networking group will engage members to: Build both personal and professional relationships, potentially growing their business, develop soft skills and assist other members in need. We are looking to:

Learn  
Engage  
Advise  
Religion (Jewish Ethics)  
Network

Point Person: Eric Sigman at [ESigman1@gmail.com](mailto:ESigman1@gmail.com)

Looking forward to networking and learning with you.

### TBE MUSICIANS & SINGERS

This intergenerational club will bring together musicians and singers of all ages and experience levels to participate and hopefully perform at the synagogue when the COVID pandemic is behind us. The theme of this group is "Jews that Rock," performing material by Jewish artists, such as Carol King and Billy Joel. The point person, Paul, is a drummer, so he is looking for a bass, guitar, and keyboard player to create the core band. Other club members are invited to sing and/or rotate through different instruments.

Point Person: Paul Weinstein at [drpaulweinstein@gmail.com](mailto:drpaulweinstein@gmail.com) or (203) 219-4191

### HEART-TO-HEART

This group is focused on providing support for those dealing with or suffering from grief and loss. We will offer a safe space for listening and sharing, and provide tools to help members move through difficult situations and feelings. The group's intention is to guide members in reclaiming their light inside. Heart-to-Heart will meet over Zoom for now, twice a month, every other Wednesday at 7:00 pm.

Point Person: Hope Stanger HHC, Trauma Therapist and Holistic Health Counselor, at [theholisticempire@yahoo.com](mailto:theholisticempire@yahoo.com) or (203) 357-0242; or Pamela Tinkham LCSW, Trauma Therapist and Yoga Therapist, at [pamelatinkham@gmail.com](mailto:pamelatinkham@gmail.com)

### BROADWAY AND MOVIES REVISITED

Join other theatre and film lovers to watch movie versions of Broadway shows, as well as films of the past and present. We will compare and discuss shows beyond entertainment value, including their messages as reflections of society, history, and culture. The club will meet monthly over Zoom for the time being.

Point Person: Barbara Rothstein at [brothstein320@gmail.com](mailto:brothstein320@gmail.com) or (203) 614-8053; Carl Shapiro at [cshapiro@optonline.net](mailto:cshapiro@optonline.net) or (203) 273-1968

### MITZVAH GARDEN CLUB

The club will provide its members the opportunity to plant and grow their own vegetables and/or flowers in TBE's very special Mitzvah Garden. Members will meet individually or as a family and each will be able to plant and care for their own bed(s) with the produce/flowers of their choosing. Beds are still available so please reach out soon!

Point Person: Meryl Silverstein at [merylandhank@optonline.net](mailto:merylandhank@optonline.net) or (203) 588-0026

### HIKING AND WALKING CLUB

Club members will explore the beautiful trails, gardens and other venues within a one-hour drive of TBE. There may be a visit to a small museum or lunch after the hike/walk. Hikes/walks will be scheduled during the week and on Sundays to accommodate varied schedules. Point Person: Leslie Heyison at [lheyison@gmail.com](mailto:lheyison@gmail.com) or (646) 354-3950

### TBE STEMers

For those interested in learning and teaching others in the field of science, this is the club for you. We will discuss Jewish topics of interest, such as medical and research ethics, as well as present on individual areas in which we specialize. Meetings will take place monthly over Zoom for now. On occasion, we will also organize lectures and speakers for the congregation.

Point Person: Fran Ginsburg at [ginsstamf@gmail.com](mailto:ginsstamf@gmail.com) or (203) 979-9570





# Temple Beth El

**Paver Campaign 2021-2022**

***Celebrating Our First 100 Years***

***Building a stronger future...***

To mark our 100<sup>th</sup> year, Temple Beth El invites you to purchase a commemorative brick for the walkway of our beautiful new entrance. The brick walkway will be visible to all who enter our building and will serve as a permanent reminder of our Temple's first 100 years. By purchasing a personalized, laser-engraved brick for you, your family or as a gift, you are creating a lasting legacy and making a positive financial impact. You have been a part of TBE's past and present. Now you can be part of its future. Thank you for helping us pave the way...*One brick at a time!*

Commemorate a significant life events · Bar/Bat Mitzvah · Baby naming · Wedding · Memorialize family members and friends.

Installation of bricks will take place during the Summer months of 2022. Funds from this campaign will be used to create a patio for outdoor events.

For more information contact Steven Lander, Executive Director at 203-322-6901, ext. 304 or e-mail: [execdir@tbe.org](mailto:execdir@tbe.org).

Purchase of a brick is a tax deductible donation.

**DONATE ONLINE**  
Go to: [www.tbe.org/donate/](http://www.tbe.org/donate/)

### OPPORTUNITIES FOR GIVING

- ☒ Adult Education Fund
- ☒ Beth El Cares
- ☒ Beth Elders
- ☒ Debra Wald Goldberg Kindergarten Scholarship Fund
- ☒ Frank & Rose Rosner Memorial Fund (maintenance)
- ☒ General Fund
- ☒ Kiddush Fund
- ☒ Matthew Klein Memorial Sanctuary Garden Fund
- ☒ Emmet Manheim Playground Fund
- ☒ Mitzvah Garden Fund
- ☒ Music Fund
- ☒ Prayer Book Fund
- ☒ Project Ezra Fund
- ☒ Religious School Fund
- ☒ Reyut Shabbat Bag Fund
- ☒ Security Fund
- ☒ Solar Fund in memory of Norma Mann, z'l
- ☒ Youth Fund

### DISCRETIONARY FUNDS

- ☒ Rabbi Joshua Hammerman's Mitzvah Fund
- ☒ Cantorial Soloist Katie Kaplan's Mitzvah Fund
- ☒ Hazzan Sidney Rabinowitz' Mitzvah Fund

### ATTENTION PARENTS OF COLLEGE STUDENTS

Rabbi Hammerman would like to stay in touch with your child while they are away at college. Please send their e-mail address to Mindy in the Temple office at [office@tbe.org](mailto:office@tbe.org). Thank you!



### TREE OF LIFE

A beautiful way to commemorate a special occasion is to purchase a "leaf" on our beautiful "Tree of Life" sculpture adorning our Temple lobby. There are many more leaves available for your own personal inscriptions.



The following categories are still available:

Triple Chai	\$1,000
Silver Leaves - Gold Border	\$750
Silver Leaves	\$250

### CONTRIBUTING SHARES OF STOCK TO TEMPLE BETH EL

One way to boost your charitable contributions to Temple Beth El is to give shares of appreciated stock instead of cash. You do not pay any tax on your capital gain, and your charitable deduction is the shares' entire fair market value.

Beth El members may contribute shares of stock to satisfy their dues pledge, their annual fund pledge, and other contributions to the Temple.

After consulting your tax advisor, please contact the TBE office at 203-322-6901.

### DID YOU KNOW?

TBE offers free family membership for the first year to any member's child on the occasion of his or her marriage. For more information, contact Steve Lander at 203-322-6901, ext. 304.



### SEEKING SHABBAT GREETERS WHEN WE RETURN

Do you like getting a warm "Shabbat Shalom" as you enter shul on Saturday morning?

Our greeting program has been extremely well received. To keep this program going, we need volunteer greeters like you.

For more information Contact Eileen H. Rosner at [rosnereileen@gmail.com](mailto:rosnereileen@gmail.com).

Thanks for helping make Temple Beth El a warm and welcoming place to be.

### CELEBRATING A SPECIAL EVENT? COMMEMORATING A YAHRTZEIT?

Please consider sponsoring a VIRTUAL Kiddush, following Shabbat Services, or a Kiddush-to-Go, following our Friday evening services.

Contact Steven Lander for all of the new, reasonably priced Kiddush options at 203-322-6901, ext. 304 or [execdir@tbe.org](mailto:execdir@tbe.org).

### PAY YOUR DUES ONLINE

Go to [www.tbe.org/donate](http://www.tbe.org/donate) and click on member payments.

Questions? Contact Linda at 203-322-6901, ext. 302 or [lindar@tbe.org](mailto:lindar@tbe.org).



## WE ARE GRATEFUL FOR YOUR CONTRIBUTIONS

### RABBI JOSHUA HAMMERMAN MITZVAH FUND

#### *In honor of...*

In appreciation by Rosanne & Stephen Elkins  
In appreciation by Ellen & Art Laichtman  
Rabbi Joshua Hammerman for shiva minyans by Caryl Ferber  
Poser & Peter Poser and Stacy Ferber  
Sale of Chametz by Beverly & David Stein  
Jakob Zelazny becoming a Bar Mitzvah by Stephanie & Dan  
Zelazny

#### *In memory of...*

Benedict Vachss, z'l by Marcia Braunstein  
Alan Shameer, z'l by Marge Shameer  
Sheila Drogy, z'l by Leon Drogy  
Jerome Horowitz, z'l by Kathy & Howard Kraus  
Richard Turshen, z'l by Sharon & Jeff Turshen

### CANTOR KATIE KAPLAN MITZVAH FUND

#### *In honor of...*

Cantor Katie Kaplan for shiva minyans by Caryl Ferber Poser  
& Peter Poser and Stacy Ferber  
Jakob Zelazny becoming a Bar Mitzvah by Stephanie & Dan  
Zelazny

#### *In memory of...*

Jerome Horowitz, z'l by Kathy & Howard Kraus

### IN HONOR OF:

#### THE BIRTH OF MILA TOBIN

Susan & Art Greenwald, Marsha Colten & Robert Cohen  
**JAKOB ZELAZNY BECOMING A BAR MITZVAH**  
Marsha Colten & Robert Cohen

### RELIGIOUS SCHOOL FUND

#### *In honor of...*

Liran Raz for his kindness and support on the occasion of  
Maverick's birth by Nancy & Jerry Kapchan

### PRAYER BOOK FUND

#### *In memory of...*

Emanuel Rothman, z'l, by Linda & Joe Rothman

### MUSIC FUND

#### *In honor of...*

Sue Plutzer by Caryl Ferber Poser & Stacy Ferber

### BETH EL CARES

#### *In memory of...*

Ethel Rosenthal, z'l by Linda & Joe Rothman

### INFORMATION FOR YOU...

When making a donation an acknowledgement will be mailed to the designee for donations of \$10 or more. Donations of less than \$10 will be acknowledged only in the Bulletin. All donations will be published in the Bulletin unless you state that you wish to be anonymous.

## ON ONE FOOT continued from page 3...

of last-minute requests from people whose in-person plans had been scuttled by this merciless disease. We shared a sacred moment together, and it was very special. And I came away feeling like we had done a mitzvah. That's why we're here.

These things happen again and again.

This May and June, we'll take a few moments to explore what we've accomplished and where we are heading, in particular, at two events: our annual meeting, and more significantly a few days later, with the installation of our never-officially-installed cantor. I have such fond memories of my installation as senior rabbi here, back on September 11 (of all days), 1992, which at that time was just any old day. But we filled that with pomp and emotion, and that is precisely what will happen when we install Cantor Kaplan. She has already accomplished so much, inspiring us, cheering us and calming us during these most stormy hours. I hope you'll be able to join us at these events, as we partake in the magic of sustaining a thriving community in the most challenging of times. It's been a hybrid type of year, but we'll be all-in to celebrate with our new cantor.

Mazal tov to Cantor Kaplan and her family, and as well to our incoming and outgoing board members and officers. And a special thanks to Lisa Manheim for her dedicated and passionate leadership.



To everyone, a happy Yom Ha'atzmaut and a joyous Shavuot.

Rabbi Joshua Hammerman

### Get involved, please...

Help Wanted! In order to maintain our vibrant and dynamic community, the Fund-Raising Committee needs more members to support TBE and volunteer their skills and talents. Many of these opportunities ask for very small-time commitments. Please consider getting involved with the:

Annual Appeal | Temple Rock | Cantor's Concert

If you are interested in volunteering, please contact us and we will give you more information.

Thank you!

Art Laichtman  
Fund-Raising Chair  
aelaichtman@optimum.net

### MEMORIAL PLAQUES



Inscribe the names of your loved ones on a plaque for our Chapel wall along with a light to commemorate their *yahrtzeit* and *yizkor* observances throughout the year.

For details, contact Mindy at office@tbe.org or 203-322-6901, ext. 301.



## REMEMBERING OUR LOVED ONES



Robin, Jarad & Spencer Evans ..... **BEATRICE ABRAHAM**  
 Gail & Jack Abrams ..... **HARRY ABRAMS**  
 Barbara & Stan Friedman ..... **NATHAN ALIENTUCH**  
 Mindy, Jeff & Steph Hausman..... **JEAN & DAVID ANIS**  
 Maxine & Jay Freilich..... **KARL ARONSON**  
 Maxine & Jay Freilich..... **RICHARD ARONSON**  
 Meredith & Eric Reuben ..... **GERALD BAUM**  
 Maddy Shapiro..... **ROSE BELITZ**  
 Amy & Mel Bloomenthal ..... **SAM BLOOMENTHAL**  
 Carol & Wil Brewer ..... **LESLIE BREWER**  
 Debby & Jack Goldberg ..... **RUTH COLNER**  
 Melanie Massell ..... **JUDGE FRANK D'ANDREA**  
 Ellen Bromley & Family..... **SIDNEY EPSTEIN**  
 Ronnie & Edward Fein ..... **GEORGE FEIN**  
 Stacy Ferber ..... **HYMAN FERBER**  
 Marsha & Ed Greenberg ..... **GERTRUDE FIGER**  
 Nancy & Brad Benjamin..... **LOIS & HAROLD FINK**  
 Tomskey Family ..... **LOIS FINK**  
 Maxine & Jay Freilich..... **RUTH & SEYMOUR FREILICH**  
 Karen Gault-Welt & Philip Welt ..... **JOHN GAULT**  
 Marcia Bick-Gershman & Stanley Gershman ..... **STANLEY GERSHMAN**  
 Barbara Malloy..... **THELMA GLAZER**  
 Leo Gold..... **SONDRA GOLD**  
 Lorelee & Phil Granowitz..... **IRVING GRANOWITZ**  
 Steven Grushkin & Family ..... **MERVIN GRUSHKIN**  
 Robin, Jarad & Spencer Evans ..... **MITCHELL GUNTY**  
 Leonor Lopez..... **JOSÉ HALPERN**  
 Marsha & Ed Greenberg ..... **ESTHER HANDLER**  
 Lori & Bruce Tobin ..... **SAUL HERSHKOWITZ**  
 Leslie Horowitz & Barney Horowitz .... **BARNETT HOROWITZ**  
 Sari & Alan Jaffe..... **TILLIE JAFFE**  
 Susan & Richard Blomberg ..... **ARNOLD KALISKI**  
 Ann & Julius Lasnick ..... **JULES KAPLAN**  
 Adrienne & Ben Kirschenbaum..... **ROBERT KIRSCHENBAUM**  
 Susan & Richard Blomberg ..... **KURT KONIGSBACHER**  
 Susan & Richard Blomberg ..... **LOUIS KONIGSBACHER**  
 Ruth Kwartin..... **SAUL KWARTIN**  
 Peggy Kalter ..... **RITA LODISE**  
 Stephanie & Larry Sherman ..... **JACOB MALIN**  
 Stephanie & Larry Sherman ..... **ROBERT MALIN**  
 Laura Markowitz ..... **ROSALIE MARKOWITZ**  
 Carolyn Nadel-Farin & Phil Farin ..... **KENNETH NADEL**  
 Evelyn & Bruce Kahn ..... **MARGOT NEU-EPSTEIN**  
 Ellie Mirne ..... **ARTHUR NUSSDORF**  
 Sandra & David Oberhand..... **EMANUEL OBERHAND**  
 Francine & Robert Plansky ..... **PAUL PLANSKY**  
 Lisa & Michael Rome ..... **HOWARD ROME**  
 Joyce & Lewis Slayton ..... **FRANKLIN ROSNER**  
 Gail & Jack Abrams ..... **MARGARET ROTH**  
 Judy Schneiderman ..... **RUTH ROSENBERG**  
 Lurie & Dan Schacht ..... **GARY SCHACHT**  
 Ruth Alpert ..... **JULIA SACHS**  
 Barbara & Edward Drotman..... **MICHAEL SCHMALL**  
 Mina Roth-Dornfeld..... **ALLYN SCHOTTENFELD**  
 Carol Schwartz & Family ..... **EDWARD SCHWARTZ**  
 Roslyn & Merritt Nesin ..... **MORRIS SHAPIRO**  
 Michelle & Greg Marrinan & Family ..... **PHYLLIS SIEGEL**  
 Susan Plutzer ..... **ETHEL SIEMAN**

Joyce & Lewis Slayton ..... **PAUL SLAYTON**  
 Phyllis & Harvey Walzer ..... **ESTHER SMALL**  
 Magida Family ..... **CELIA SOLOVE**  
 Debbie & John Tomskey & Family..... **HARRY TOMSKY**  
 Bernice Trell & Family ..... **ROBERT TRELL**  
 Ronnie & Edward Fein ..... **LILY VAIL**  
 Phyllis & Harvey Walzer ..... **RUDOLPH WALZER**  
 Shari & Sandy Weisz ..... **PAMELA WEISZ**  
 Debra & Stephen Pollack..... **ESTHER WINTHROP**  
 Leo Gold ..... **HENRIETTA WITTENBERG**  
 Marsha & Ed Greenberg ..... **DAVID WOLFE**  
 Roselyn Finchler..... **HELEN ZAGELMAN**

### IN MEMORY OF:

#### **BEVERLY FERBER, z'l**

Phyllis & George Heller, Phyllis & Joel Curran, Debbie & Dan Fradkin, Karen Resnick, Dena Kaplan & Bennett Brooks, Clara Kopel

#### **GERTRUDE SEID, z'l**

Liz & Scott Krowitz

#### **ROY BENSON, z'l**

Marsha Colten & Robert Cohen

#### **TAMARA LINTON, z'l**

Susan Frieden

#### **KURT KLEINMAN, z'l**

Karen Resnick, Susan & Art Greenwald

#### **SAMUEL KRAVITZ, z'l**

Ann & Paul Marinucci

#### **JEROME HOROWITZ, z'l**

Marsha Colten & Robert Cohen, Maxine & Jay Freilich

### WE MOURN THE PASSING OF...

**ROY BENSON**, grandfather of Risa Raich

**KURT KLEINMAN**, great-uncle of Lisa Grove Raider

**TAMARA LINTON**, mother of Karen Denker

**MINERVA BARTELSTONE**, grandmother of Erica Beilenson

**GERTRUDE SEID**, mother of Julie Rose

**VIVIAN HOWARD**, mother of Robin Minkoff

**LORNA ADELMAN**, mother of Roslyn Perlson

**RAISA ROGOVA**, mother of Galina Landres

**NANCY ELLIOT**, sister of David Rauch

**EDWEN GOLDSTEIN**, wife of Fred Goldstein

### SHIVA NOTICES AVAILABLE ON-LINE

Congregants who are looking for shiva information can now quickly look online instead of searching their inbox for the announcement or calling the synagogue office. Just go to TBE's website ([www.tbe.org](http://www.tbe.org)) and click "Shiva Notices" under the WHAT'S NEW menu.



## TEMPLE ROCK 2022



## BETH EL CARES

*Beth El Cares focuses on chesed and tzedakah by helping the poor and unfortunate through mitzvot, both in our synagogue and the greater Stamford community. We welcome volunteers! This is the work we are currently engaged in. If you are interested in volunteering in any of these endeavors, please contact the person listed.*

**Reyut (Friendship):** Committed to serving the needs of those in our TBE community, including friendly visits, assistance with errands and transportation, Shabbat bag delivery to hospitalized patients. Contact Melanie Massell at [reyut@tbe.org](mailto:reyut@tbe.org) or 203-324-7190.

**Project Ezra:** Providing pre-shiva meals to the bereaved in the congregation. Contact Joy Katz at [joyakatz@yahoo.com](mailto:joyakatz@yahoo.com) or 203-329-3359.

**Serving the homeless:** Helping prepare and serve food — you can do either or both — to the homeless at New Covenant Center in Stamford on the fifth Thursday of each month. Times are 2:30-4:15 pm and 4:15-5:30 pm. Contact Amy Temple at [aetemple@optonline.net](mailto:aetemple@optonline.net) or 203-496-1309.

**High Holiday Food Drive:** Contact Sharon Turshen at 203-323-3872

**Christmas dinners at local homeless shelters:** Contact Amy Temple at [aetemple@optonline.net](mailto:aetemple@optonline.net) or 203-496-1309.

Your Hometown Jewish Funeral Home.  
Locally owned and operated by Tom Gallagher.

203-359-9999

*Our family proudly serving your community for generations.*

- Private Tahara Room
- Shomer Available

- Graveside Services
- Livestream Service Available

- International & Domestic Transportation
- Serving All Cemeteries



Thomas M. Gallagher  
Owner & Funeral Director

104 Myrtle Avenue, Stamford, CT 06902 | 203-359-9999  
[info@sholomchapel.com](mailto:info@sholomchapel.com) | [www.SholomChapel.com](http://www.SholomChapel.com)

## HOW WILL YOU ASSURE JEWISH TOMORROWS?



Commit to leaving a legacy and help ensure that Temple Beth El will be part of the fabric of the Stamford Jewish community for many years to come.

TEMPLE BETH EL  
350 Roxbury Road  
Stamford, CT 06902  
[www.tbe.org](http://www.tbe.org)

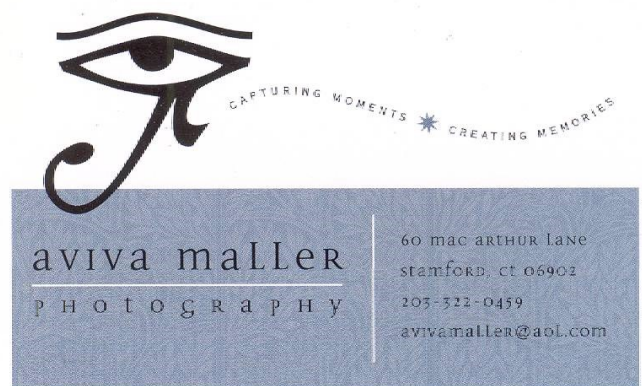


LIFE & LEGACY  
Assuring JEWISH TOMORROWS  
A program of the HANUKKAH COMMISSION FOUNDATION

To create your legacy contact Steven Lander  
[execdir@tbe.org](mailto:execdir@tbe.org) | 203-322-6901, ext. 304

The deadline for the  
July-August 2022 Bulletin  
will be Wednesday, June 1, 2022.

# Your Ad Goes Here



Check out our special website  
Dedicated to TBE's event space

[www.thebigeventspace.com](http://www.thebigeventspace.com)

Please let your friends and business  
associates know how we can fulfill their  
celebratory and meeting needs.

ART GREENWALD  
President

INTEGRATED PROTECTION SERVICES, LLC  
320 Boston Post Road, Suite 140 DARIEN, CT 06820  
Tel: 203.322.0772

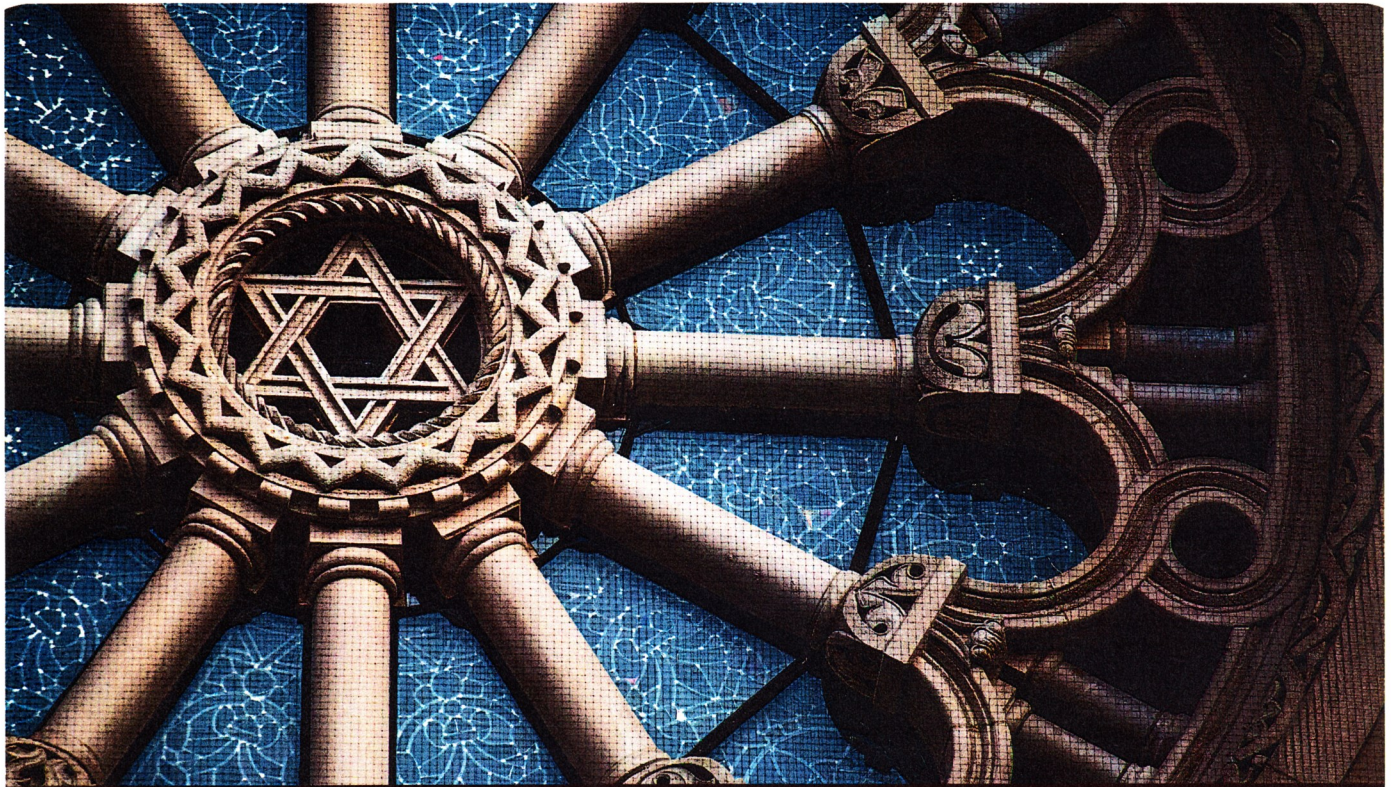
[WWW.INTEGRATEDPROTECTIONSERVICES.COM](http://WWW.INTEGRATEDPROTECTIONSERVICES.COM)

SYSTEMS AND SERVICES FOR SECURITY  
AND FIRE PROTECTION

SERVING CONNECTICUT AND NEW YORK  
COMMERCIAL AND RESIDENTIAL







TAKING CARE OF EACH OTHER  
*is what community is all about.*

**WE'RE PROUD TO SERVE** our community with personal, compassionate care.  
As your Dignity Memorial® professionals, we're dedicated to helping families create  
a unique and meaningful tribute that truly honors the heritage of the Jewish faith.

*We invite you to contact us today to learn more.*

Dignity®  
MEMORIAL

✧ LIFE WELL CELEBRATED™ ✧

**LEO P. GALLAGHER & SON**

FUNERAL HOME

STAMFORD

203-327-1313 [LeoPGallagherStamford.com](http://LeoPGallagherStamford.com)