

WOW! WHAT A YEAR!

JULY

Kabbalat Shabbat Service, Shabbat Service, Weekday Mincha Minyan on Zoom, Sunday Morning Minyan in-person, Thursday Morning Minyan in-person, Heart to Heart Support Group, Rabbinic Search Committee, Tisha B'Av Service at CSW, Board of Trustees Meeting, Executive Committee Meeting

AUGUST

Kabbalat Shabbat Service, Shabbat Service, Weekday Mincha Minyan on Zoom, Sunday Morning Minyan in-person, Thursday Morning Minyan in-person, Heart to Heart Support Group, Rabbinic Search Committee, Fundraising Committee Meeting, Countering Active Threats Training, Kulanu Program, High Holiday Choir Rehearsal, Men's Club Meeting, BBQ and Barachu, Board of Trustees Meeting, Executive Committee Meeting



SEPTEMBER

Kabbalat Shabbat Service, Shabbat Service, Weekday Mincha Minyan on Zoom, Sunday Morning Minyan in-person, Thursday Morning Minyan in-person, Aufruf of Eric Hazen and Emma Brum, High Holiday Bimah Building, Sukkah Building, TeeBeEs ShabbuzzBimBam, Selichot Service, Annual Memorial Service at Beth El Cemetery, Rosh Hashanah Services, Kol Nidrei and Yom Kippur Services, High Holiday Family Services, Teen Activity with Yoav Yaron, Israeli Emissary, High Holiday Food Drive, Keshet Beth El School Year Begins, Keshet Beth El decorates the sukkah, TeeBeEs Shabbat Sukkot, Rabbinic Search Committee Meeting, Heart to Heart Support Group, High Holiday Choir Rehearsal, Board of Trustees Meeting, Executive Committee Meeting



OCTOBER

Kabbalat Shabbat Service Attorney General William Tong guest speaker, Shabbat Service - Gavin Cooper Bar Mitzvah, Eliana Nadel Bat Mitzvah, TeeBeEs ShabbuzzBimBam, Weekday Mincha Minyan on Zoom, Sunday Morning Minyan in-person, Thursday Morning Minyan in-person, Sukkot Services, Shemini Atzeret Services, Simchat Torah Services, Lulav and Etrog Sale, Solidarity with Israel, Yoav Yaron and Teens Discuss Israel, Israel Meet-Up on Zoom, Men's Club Beer Making, Hebrew Reading Crash Course, Sisterhood Welcome Back Brunch, Artist in Residence Committee Meeting, Temple Rock Committee Meeting, Fundraising Committee Meeting, Rabbinic Search Committee Meeting, Steak & Scotch in the Sukkah, Teen Sukkah Party, Heart to Heart Support Group, Board of Trustees Meeting, Executive Committee Meeting



Continued on page 8...

TEMPLE BETH EL - BOARD OF TRUSTEES**EXECUTIVE COMMITTEE**

Scott Krowitz, President	917-902-1447
Lisa Manheim, Immediate Past-President	917-690-2712
Devra Jaffe-Berkowitz, First Vice President	203-978-1113
Jeffrey Cohen, Vice President	203-358-9911
Kahla Cooper, Vice President	203-554-7888
Dana L. Horowitz, Vice President	203-321-0018
Julie Rosenberg, Vice-President	203-975-8880
Jeffrey Turshen, Vice-President	203-323-3872
Susan Frieden, Treasurer	203-869-4282
Christopher Maroc, Secretary	914-215-2025

ADVISORS

Stan Friedman	203-322-0416
Carl R. Weinberg	203-322-8675

TRUSTEES

Emma Adler	347-229-8904
Debra Adler-Klein	203-253-1664
Amy Davidson	203-832-2909
Jon Eisenstein	203-321-8369
Suzanne Fruithandler	203-940-4212
Marilyn Galler Sofer	917-282-4993
Leslie Glenn	203-273-7215
Michael Handel	203-981-1987
Vicki Kobliner	203-253-9784
Erica Kraypohl	203-273-0246
Marsha Matthews	203-962-2628
Jonathan Phair	646-530-4707
Karen Resnick	203-536-3115
Sol Rose	203-331-2132
Barbara Rothstein	203-614-8053
Eric Sigman	917-974-8595
Ron Zussman	914-826-7082

SISTERHOOD CO-PRESIDENTS

Nancy Kapchan	203-435-0389
Juli Harris-Sekuler	203-324-1433

MEN'S CLUB PRESIDENT

Carl Shapiro	203-273-1968
--------------	--------------

PAST PRESIDENTS

Gordon Brown	203-440-4507
Rosalea Fisher	203-323-1449
Fred S. Golove	203-322-0295
Alan Kalter, z'l	
Peter K. Kempner	203-968-8079
Mark Lapine	203-329-9879
Gary P. Lessen	203-322-7617
Sylvan D. Pomerantz	203-968-0605
Brian Rogol	212-531-8203
Eileen H. Rosner	203-461-0506
Carl R. Weinberg	203-322-8675
Mia M. Weinstein	203-595-0528

WHERE TO FIND IT

Michael Knopf, Senior Rabbi	Page 3
Katie Kaplan, Cantor	Page 3
July-August Service Schedule	Page 5
Beth El Cares	Page 6
Men's Club	Page 10
Sisterhood	Page 10

COMMITTEE CHAIRPERSONS**Finance**

Robert S. Cohen	203-329-9622
Susan Frieden	203-869-4282

Fund Raising

Ron Zussman	914-826-7082
-------------	--------------

High Holy Days Task Force

Devra Jaffe-Berkowitz	203-978-1113
-----------------------	--------------

High Holy Days Food Drive

Sharon Turshen	203-323-3872
----------------	--------------

Human Resources

Leslie Glenn	203-273-7215
--------------	--------------

Immigration Task Force

Leslie Glenn	203-273-7215
--------------	--------------

Marketing and Communications

Stan Friedman	203-322-0416
---------------	--------------

Membership Committee

Kahla Cooper	203-554-7888
--------------	--------------

Project Ezra

Joy Katz	203-329-3359
----------	--------------

Reyut Committee

Melanie Massell	203-324-7190
-----------------	--------------

Ritual Committee

Mia Weinstein	203-595-0528
---------------	--------------

Security

Jeff Turshen	203-323-3872
--------------	--------------

Social Action/Tzedek Committee

Julie Rosenberg	203-975-8880
-----------------	--------------

OUR STAFF IS MOST EAGER TO ASSIST YOU**Monday-Thursday, 9am-5:00 pm | Friday, 9am - 2:00pm****Phone: 203-322-6901 Fax: 203-322-0532**

Michael Knopf, Senior Rabbi (rabbiknopf@tbe.org)	ext. 307
Katie Kaplan, Cantor (cantor@tbe.org)	ext. 315
Steven Lander, Executive Director (execdir@tbe.org)	ext. 304
Leo Linder, Director Keshet Beth El (eddir@tbe.org)	ext. 305
Rabbi Gerry Ginsburg, Assoc. Rabbi (rabbiginsburg@tbe.org)	ext. 300
Dayna Patashnik, Engagement Coordinator (tbeengagement@gmail.com)	
Linda Rezak, Bookkeeper (lindar@tbe.org)	ext. 302
Mindy Rogoff, Temple Secretary (office@tbe.org)	ext. 301
Alberto Eyzaguirre, Facilities Manager (maint@tbe.org)	ext. 314

MICHAEL ROSE KNOPF, SENIOR RABBI

To My New TBE Family

It's hard to believe that in just a few short weeks I will begin serving as your Senior Rabbi! My first day at work will be Monday, July 29, and my first Shabbat will be August 2-3. I could not be more excited to get to work nurturing and growing our vibrant sacred community.



Over the past few months, I have been working closely with TBE's lay leadership to ensure a smooth and seamless transition for us all. I am deeply grateful to TBE's volunteer leaders – particularly Scott Krowitz, Devra Jaffe-Berkowitz, and Lisa Manheim – for their tireless dedication to this community and its future. And I am eager to begin working with Cantor Kaplan, Rabbi Ginsburg, Steve Lander, and the rest of the staff.

I am confident that we will ease together into this new chapter in our lives, but I am also cognizant of the rabbinic teaching, “kol hat’halot kashot, all beginnings are hard” (*Mekhilta d’Rabbi Yishmael, Parashat Yitro*). When a new rabbi comes to a congregation, there is a learning curve on both sides. For example, TBE is blessed with a large and diverse congregation. My highest priority is getting to know each of you and your families. But getting to know everyone in a large congregation is a big task. I know I will forget names, mix up relatives, and fail to recall stories. I ask that you please be patient with me as I get to know you.

TBE also has a beautiful history, many wonderful traditions, and countless customs that make it special and unique. These are great gifts, and you should be proud of them. I ask that you recognize it will take me time to learn your ways and that you please compassionately guide me as I do so.

Additionally, for the past four decades you have been blessed with a special rabbi whose wisdom, vision, passion, and sensitivity, are matched only by his *menshlikeit* (Indeed, he wrote the book on the subject!). I have cherished getting to know Rabbi Hammerman over this past year. I deeply value his guidance, support, mentorship, and friendship, from which I hope I will continue to benefit long into the future. I pray that I will serve this community with a comparable level of love, commitment, and professionalism. At the same time, I am my own unique person and rabbi, with my own ideas, passions, practices, strengths, and weaknesses. I pray that you’ll be open to and understanding of the ways in which my style will be different from Rabbi Hammerman’s.

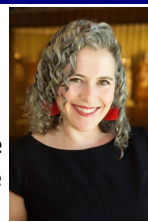
Similarly, in the fullness of time, aspects of TBE will change. This is healthy and necessary for any community, the only path to continued dynamism, relevance, and strength. Some changes will be unconscious; others will be intentional breaks with the status quo. Some will be small, others, perhaps, large. Some will come quickly, others, more gradually. Different segments of the community will

Continued on page 4..

KATIE KAPLAN, CANTOR

Cantor Kaplan’s Remarks from the 2024 Annual Meeting

Leonard Bernstein said in *The Joy of Music*, **“This will be our reply to violence: to make music more intensely, more beautifully, more devotedly than ever before.”**



Here at TBE this past year, we’ve done just that. We have made beautiful music in response to one of the most difficult years to be a Jew that I’ve encountered in my life. We’ve come together to cry and to laugh and to share in the full range of human emotion in “community,” which Rabbi Jonathan Sacks says, “is society with a human face.” Gratefully, we’ve been able to see each other’s faces for the better part of this entire year. Unmasked and able to sense the depth of pain, joy, fear, and pride that we carry around day to day, the connection with one another has been strengthened and is even more spectacular than in pre-covid times. Just pick someone else in the room right now, make eye-contact, and smile at them- go ahead. See that, right there, that is the stuff and these are the moments.

While we move through unprecedented times in the world and our country, we also are moving into relatively uncharted times as a congregation at Temple Beth El as we prepare for Rabbi Hammerman to transition to the role of Emeritus, and we welcome Rabbi Knopf to the bimah. Bittersweet, for sure, as it was exactly 19 years ago today when Rabbi Hammerman and Cantor Jacobson stood under the chuppah with me and Eric in Killington, VT. Where has the time gone?

Transitions are natural pauses in which people may find themselves saying, “Where has the time gone?” “Where do I want to be?” “Am I still connecting with my community?”, “Am I still connecting with my faith?” During this natural period of questioning, I am here for you. We, at TBE are here for you. So if you haven’t yet had a chance to connect for coffee with me, but you would like to sit and talk about life, your hopes and dreams, struggles, or even whatever you are binging on Netflix, please know, the door is always open and I am eager to spend time with each and every one of you as we forge ahead into the next year of redefining community at TBE.

With so many changes on the horizon it may feel like the ground beneath our feet is shifting, and not like the earthquake from a couple of months ago. However, the natural world has certainly been giving us some practice in epic shifting and monumental changes. From the earthquakes to the solar eclipse, solar flares, the Aurora Borealis as far south as Florida, monster storms, and rising temperatures, the Earth and the cosmos are certainly experiencing their own shifts in energy and taking us all along for the ride. TBE may feel a little bit like that as well over the next few months, but all you have to do is walk out your front door, show up at TBE and reconnect with friends and family around you to know that together we will ride

Continued on page 4...

experience changes differently: Some will want more change, faster, and others will want less change, slower. In this ongoing journey together, I pledge always to do my best to be sensitive and attentive to your needs, concerns, and ideas. And I ask that we commit to partnering together to build our congregation's future; that we cherish synthesis and compromise, and that we openly and respectfully share with each other our anxieties, hopes, and dreams for our holy community.

Indeed, in this very spirit, one of my first major initiatives at Temple Beth-El will be embarking on a "listening tour" of the congregation. In one-on-one conversations over coffee (or perhaps even a beer), as well as in small gatherings, house parties, and over Shabbat meals, I hope to get to know each and every member of the congregation – to hear your stories, to become acquainted with your families, and to learn about your experience of, as well as your ideas for, our congregation's future. We will reach out in the near future with ways to let us know whether you'd like to attend and/or host one of these gatherings. Please also be on the lookout for special opportunities to learn together in the coming months.

If it's beginning to look to you like I'm going to be a very busy rabbi, you're right! And I wouldn't have it any other way. My job is to be there for you and to help make our congregation flourish; holy work, which I cherish, that is perpetual and limitless. At the same time, I, like everyone, need time for rest, self-care, and, most importantly, family. I ask that you please be sensitive to times during the week that I reserve for these pursuits, including my weekly day off (I currently take Tuesdays off, but will likely take off Mondays once I transition to TBE.).

Finally, I hope that you will be in touch with me once I begin on July 29 (Of course, should you need anything, you are welcome to contact me before then as well!). I would love the opportunity to schmooze with you any time, and for any reason. You can schedule time to meet with me, whether virtually or in person, by going to <https://calendly.com/rabbiknopf>. If you don't see anything that works for you, you can feel free to email me with some options that do. You can email me at rabbiknopf@tbe.org. And you always know where you can find me on Friday evenings and Saturday mornings; I warmly welcome you to show up for Shabbat services, whether it's to talk to God, or to schmooze with me!

Adira, Lilah, Shemaya, and Akiva join me in sending you all our fondest wishes and most sincere enthusiasm.

Warmly,

Rabbi Michael Rose Knopf

(Reprinted from an email sent to the congregation on July 1.)

CHECK US OUT ON
facebook

facebook.com/tbestamford/

the waves of change and we may even find out that we really love to surf! Who knew?

Ruth Bader Ginsberg, *zichrona liveracha*, said, "Whatever you choose to do, leave tracks. That means don't do it just for yourself. You will want to leave the world a little better for your having lived." Rabbi Hammerman and Mara, you have each left indelible tracks in our hearts, throughout our sanctuary, in our homes, in the classrooms, in our lives, amidst our sorrows, and throughout our celebrations. You have left so many footprints upon so many lives that have then rippled out even further, that I'm certain you have no real sense of the magnitude of your seismic waves. We all live in a better world because of your care, your dedication, and your "having lived." We are enormously grateful and wish you both a beautiful unfolding into the next chapter of your lives.

Lisa Udi, today we also say goodbye to you as you take a new position in Natick, MA. Your footsteps, or more accurately your fingerprints, mosaic tiles, artwork, and sounds of joy and laughter will forever fill the hallways of this Temple. Edible Israel, cooking challenges, chocolate seders, epic sleepovers, and more! Your creativity has helped us to open our hearts and arms to an experiential and inclusive Judaism and for that we are tremendously grateful.

So, as we prepare to transition, let's focus on all of the beautiful moments we've shared together. The best of the best, coming together as a community to celebrate, mourn, laugh, and cry. Let's each find a memory that we can cherish and a moment of connection that we feel throughout our entire being. From the spiritual, to the religious, to the social, to the cultural, L'dor Vador, from generation to generation, our parents and grandparents constantly made adjustments to find their footing on ever shifting ground. Temple Beth El has a strong foundation, made stronger by the efforts of everyone in this room, and upon that foundation, I'm excited to be part of our continued growth and unfolding as a community over the next several years.

I extend gratitude to Scott Krowitz, the Board of Trustees, and our Temple staff, for their support and partnership over the past year and am most immediately looking forward to the upcoming Cantor's Concert, Some Enchanted Evening, on Sunday June 9th at 7pm featuring songs from the Jewish American Songbook sung by me, along with Cantor Micah from Sinai and Cantor Shimon Smith from Romemu in Manhattan with a great five piece band. While honoring Carl and Dana Weinberg, through music, we will look back, reminisce, and savor the musical soundtrack of our past with a deep appreciation for where we've come from, who we are, and where we are headed, which is both an opportunity and a blessing to be able to do together in community.

"L'dor vador, Nagid Godlecha. L'dor vador we protect this chain. From generation to generation. L'dor vador, these lips shall praise your name."

Cantor Katie Kaplan

LEO LINDER, DIRECTOR KESHER BETH EL

Welcome to Leo Linder!

Temple Beth El is delighted to welcome Kesher Beth El's new director, Leo Linder. Leo succeeds Lisa Gittelman Udi.



Leo's passion for learning and all things Jewish – especially music – was ignited by their own time in Hebrew school and grew over the years as they sang in High Holiday choir, performed with the HaZamir teen ensemble, and began to lead services. In college, Leo served as Koach chair of Hillel, organizing all of the weekly services and teaching peers everything from chanting Torah to kashering a kitchen. They hold a BA in Latin, Ancient Greek, and English from Tufts University and an MA in Latin from University of Georgia, and after taking courses in Talmud at SVARA and Hebrew at Middlebury and Brandeis, they will soon be embarking on the path towards ordination.

Most recently, Leo spent 13 years at St. Luke's School in New Canaan, where they taught classical languages in grades 5 through 12, spearheaded equity and inclusion projects, and led the Middle School theater program, directing 36 shows in their tenure there.

But you may know Leo best from the bimah, leading services on Shabbos and the High Holidays, or "Zooming" into daily minyan. When they're not at shul, you'll probably find Leo at home in Norwalk with their spouse Ari and their three very old cats. They enjoy reading, crocheting, playing tabletop RPGs, and kvelling about their baby nephews.

Contact Leo: eddir@tbe.org | 203-322-6901 x 305.

SHABBAT SERVICES

Friday Night services are held at 7:00 pm

Shabbat Morning services are held at 10:00 am

Our services may be seen on livestream

<http://www.tbe.org/tbe-live/>

All are welcome!

Thank you to...

AVIVA MALLER
for catering
Rabbi and Mara Hammerman's
Oneg Shabbat



The Jewish Historical Society of Fairfield County

Presents

Remembering the Family Store Documentary

Sunday, August 4 2024

9:30 am Breakfast | 10:00 am Movie

at Temple Beth El

RSVP requested - contact info@jhsfc-ct.org

Heart to Heart

Healing from the Loss of a Loved One

Our next sessions will be held
on July 17 and 31 at 7:00 pm on Zoom.

We will take a break during the month of
August and will resume in September.

Details and Zoom link will
Be in the weekly Shabbat Announcements.

Kulanu - Trauma, Resilience and Healing May 21, 2024 with Lisa Fliegel



MAZAL TOV TO...

Liz and Scott Krowitz on the marriage of their son, Zachary, to Sydney Cohn.

Lori and Stuart Ratner on the birth of a granddaughter, Eliza Lily, born to Kate and Steven Ratner



Share your family's simcha (engagement, marriage, birth, Bar or Bat Mitzvah of a child or grandchild) and other joyous event. Just contact the TBE office at office@tbe.org or 203-322-6901, ext. 301.

HONORABLE MENSCHEN TODAH RABAH TO OUR TORAH READERS

JULES ALEXANDER ★ BARRY ERNER ★ AMANDA GEFFNER
RABBI GERRY GINSBURG ★ LISA GROVE-RAIDER
RABBI JOSHUA HAMMERMAN ★ LESLIE HEYISON
JOY KATZ ★ CAROL KRIM ★ BERT MADWED
NAOMI MARKS ★ ARI LINDER ★ LEO LINDER
ILANA METH ★ MADELYN METH ★ STUART NEKRITZ
CRAIG OLIN ★ MELODY PRENNER-BRYANT ★ SOL ROSE
SUSAN SCHNEIDERMAN ★ GAIL G. TRELL

THANK YOU FOR SPONSORING KIDDUSH

NATALIE and JEFFREY ALEXANDER
FRAN and RABBI GERRY GINSBURG
JENNIFER and HARRIS METH
THE SHABBAT MORNING REGULARS

THANK YOU FOR SPONSORING THE SHABBAT ANNOUNCEMENTS

JENNIFER and HARRIS METH

SEEKING SHABBAT GREETERS

Do you like getting a warm "Shabbat Shalom" as you enter shul on Saturday morning?

Our greeting program has been extremely well received. To keep this program going, we need volunteer greeters like you.

For more information Contact Eric Sigman at esigman1@gmail.com

Thanks for helping make Temple Beth El a warm and welcoming place to be.

Special Occasion?

Sponsor the Shabbat Announcements
(emailed every Thursday afternoon)

Donation of \$72

All sponsors will be acknowledged at the beginning of each of the announcements and also listed in our bi-monthly Bulletin.

Call Mindy in the office at 322-6901 ext. 301.

BETH EL CARES

Beth El Cares focuses on chesed and tzedakah by helping the poor and unfortunate through mitzvot, both in our synagogue and the greater Stamford community. We welcome volunteers! This is the work we are currently engaged in. If you are interested in volunteering in any of these endeavors, please contact the person listed.

Reyut (Friendship): Committed to serving the needs of those in our TBE community, including friendly visits, assistance with errands and transportation, Shabbat bag delivery to hospitalized patients. Contact Melanie Massell at reyut@tbe.org or 203-274-1708.

Project Ezra: Providing pre-shiva meals to the bereaved in the congregation. Contact Joy Katz at joyakatz@yahoo.com or 203-329-3359.

Serving the homeless: Help prepare and serve food — you can do either or both throughout the year. Contact Julie Rosenberg at [julierenbergsip@gmail.com](mailto:julierosenbergsip@gmail.com) or 203-273-6794.

High Holiday Food Drive: Contact Sharon Turshen at 203-323-3872

Christmas dinners at local homeless shelters: Contact Julie Rosenberg at [julierenbergsip@gmail.com](mailto:julierosenbergsip@gmail.com) or 203-273-6794.

BETH EL CEMETERY ASSOCIATION

Information about the Beth El Cemetery Association, Inc. is available from:

Allan Lang at 203-327-6418
or
Eileen H. Rosner at 203-461-0506

Get involved, please...

Help Wanted! In order to maintain our vibrant and dynamic community, the Fund-Raising Committee needs more members to support TBE and volunteer their skills and talents. Many of these opportunities ask for very small-time commitments. Please consider getting involved with the:

Annual Appeal | Temple Rock | Cantor's Concert

If you are interested in volunteering, please contact us and we will give you more information.

Thank you!

Contact Ron Zussman rmzussman@gmail.com or Steven Lander execdir@tbe.org for information.

Kesher students sing with
STAAM - Washington University's
Jewish A Capella Group



7th Grade Mock Wedding



7th Grade Aliyah Service



YOUNG FAMILIES AT TBE

TeeBeEs Playground Shabbat



WOW WHAT A YEAR! continued from page 1...

NOVEMBER

Kabbalat Shabbat Service - Shabbat Service, TeeBeEs ShabbuzzBimBam, Weekday Mincha Minyan on Zoom, Sunday Morning Minyan in-person, Thursday Morning Minyan in-person, Men's Club Hearing Men's Voices, B'nai Mitzvah Parents' Meeting, Adult Ed with Rabbi Lauren Tuchman, Kulanu Committee Meeting, Temple Rock Committee Meeting, TBE Theater Club Saw Harmony on Broadway, Sisterhood Clothing Drive, Sisterhood Went to Curtain Call, Sisterhood Mah Jong, Heart to Heart Support Group, Crash Course in Hebrew Reading, Rabbi Josh Warshawsky, Artist in Residence, Board of Trustees Meeting, Executive Committee Meeting



DECEMBER

Kabbalat Shabbat Service, Hannah Zelazny Bat Mitzvah, Millie Avnir Bat Mitzvah, Shabbat Service, TeeBeEs ShabbuzzBimBam Hanukkah, Family Hanukkah Shabbat Dinner, Keshet Beth El Hanukkah Menorah Lighting at the Government Center, Weekday Mincha Minyan on Zoom, Sunday Morning Minyan in-person, Thursday Morning Minyan in-person, Comedy Night, Sisterhood Mah Jong, Kulanu Committee Meeting, Crash Course in Hebrew Reading, Men's Club Beer Bottling, Heart to Heart Support Group, Christmas Eve Shelter Lunch and Dinners, Temple Rock Committee Meeting, Board of Trustees Meeting, Executive Committee Meeting



JANUARY

Kabbalat Shabbat Service, Shabbat Service, MLK Shabbat, Mitzvah Makers Shabbat, TeeBeEs ShabbuzzBimBam, Shabbat with Rabbinical Candidate Rabbi Michael Knopf, Keshet Beth El Family Havdalah, Tu B'Shevat, Weekday Mincha Minyan on Zoom, Sunday Morning Minyan in-person, Thursday Morning Minyan in-person, Heart to Heart Support Group, Men's Club presents Dr. Yonatan Morse, Sisterhood Annual Membership Brunch, Sisterhood Mah Jong, Piano Sing-A-Long with Thursday Night Social Club, Crash Course in Hebrew Reading, Tu B'Shevat Cooking Class with Ronnie Fein, Kulanu Committee Meeting, Temple Rock Committee Meeting, Board of Trustees Meeting, Executive Committee Meeting



FEBRUARY

Kabbalat Shabbat Service, Shabbat Service, HIAS Refugee Shabbat, Musical Shabbat Weekend with Caitlin McLaughlin, Cantorial Soloist, TeeBeEs ShabbuzzBaBimBam Havdalah, Weekday Mincha Minyan on Zoom, Sunday Morning Minyan in-person, Thursday Morning Minyan in-person, Coffee with the Cantor, World Wide Wrap by Men's Club, CyberAware, Catching Up on Israel with Rabbi Hammerman, Heart to Heart Support Group, Mah Jong with Sisterhood, Men's Club Homemade Beer Tasting, Crash Course in Hebrew Reading, Temple Rock, Board of Trustees Meeting, Executive Committee Meeting



MARCH

Kabbalat Shabbat Service, Shabbat Across America, TeeBeEs Shabuzz Shalom, Shabbat Service, Joshua Friedman Bar Mitzvah, TeeBeEs ShabbuzzBimBam, Weekday Mincha Minyan on Zoom, Sunday Morning Minyan in-person, Thursday Morning Minyan in-person, Purim Megillah Reading for Adults, Purim Service and Magic Show, STAAM A Capella Choir, Sisterhood Mah Jong, Heart to Heart Support Group, Coffee with the Cantor, Men's Club Hearing Men's Voices, Crash Course in Hebrew Reading, Cantor's Concert Committee Meeting, Hammerman Farewell Committee Meeting, Board of Trustees Meeting, Executive Committee Meeting



APRIL

Kabbalat Shabbat Service, Shabbat Service, Grant Bradley Bar Mitzvah, Cantor Katie Kaplan's 30th Bat Mitzvah Anniversary, Havdalah with Sue Horowitz in Concert, TeeBeEs ShabbuzzBimBam, Passover Services, Weekday Mincha Minyan on Zoom, Sunday Morning Minyan In-Person, Thursday Morning Minyan in-person, Kulanu Committee guest speaker Lev Littman, Sisterhood Clothing Drive, Sisterhood Mah Jong, Sisterhood Passover Food Sale, Men's Club Yellow Candle Program, Temple Rock Committee Meeting, Heart to Heart Support Group, Board of Trustees Meeting, Executive Committee Meeting



MAY

Kabbalat Shabbat Service, Mediterranean Shabbat, Cantor Deborah Jacobson, guest cantor, TeeBeEs Playground Shabbat, Pride Shabbat, Shabbat Service - Ilana and Madelyn Meth B'not Mitzvah, Kesher Beth El Shabbat, Men's Club Shabbat, Weekday Mincha Minyan on Zoom, Sunday Morning Minyan in-person, Thursday Morning Minyan in-person, Kulanu Committee guest speaker Lisa Fliegel, 7th Grade Mock Wedding, 7th Grade Graduation, Sisterhood Mah Jong, Yom Ha'Atzmaut Celebration, TBE Annual Membership Meeting, Beth El Cemetery Association Annual Meeting, Mother's Day Mitzvot Refugee Resettlement Collection, Pacific House Shelter Dinner, Heart to Heart Support Group, Hammerman Farewell Committee Meeting, Board of Trustees Meeting, Executive Committee Meeting



JUNE

Kabbalat Shabbat Service, Farewell to the Hammermans Shabbat, Shabbat Service - Jules Alexander Bat Mitzvah, Shavuot Services, Sisterhood Shabbat, Weekday Mincha Minyan on Zoom, Sunday Morning Minyan In-Person, Thursday Morning Minyan in-person, Men's Club Hearing Men's Voices, Sisterhood Mah Jong, Annual Cantor's Concert honoring Carl and Dana Weinberg, Heart to Heart Support Group, Board of Trustees Meeting, Executive Committee Meeting



Welcome to TBE Sisterhood's 2024-25 Year!

TBE Sisterhood is thrilled to embark on a new year filled with opportunities for connection, growth, and contribution.

JOIN US AT 7pm ON JULY 9th FOR OUR FIRST MEETING OF THE YEAR
(Location TBA)

Our vibrant, multi-generational community of women is dedicated to sharing their lives, careers, values, and journeys in an environment of friendship, respect, and intellectual and spiritual growth. We are committed to supporting our synagogue, our community, and the wider Jewish world through a variety of enriching programs and events.

Our Mission

Together, we strive to create a warm and dynamic community that:

- ☆ **Financially supports our synagogue:** Through our social and educational programs, we contribute significantly to Temple Beth El.
- ☆ **Fosters personal growth:** Members have numerous opportunities for intellectual pursuits, leadership development, and community service.
- ☆ **Strengthens Jewish heritage:** We celebrate and recognize the importance of our Jewish traditions and values.

What We Offer

Our Sisterhood provides a rich tapestry of activities and programs, including:

- ☆ **New Friendships:** Building connections within our community.
- ☆ **Annual Donation:** Providing generous financial support to Temple Beth El.
- ☆ **Gifts to B'nai Mitzvah Celebrants:** Celebrating important milestones.
- ☆ **Educational Programs:** Covering topics like food, health, politics, and Jewish history.
- ☆ **Trips and Activities:** Organizing excursions, theater and social events.
- ☆ **Author Talks and Cooking Demonstrations:** Engaging and interactive experiences.
- ☆ **Creative Activities:** Exploring various artistic and creative outlets.
- ☆ **Mah Jongg:** Monthly games and lessons.
- ☆ **Book Groups:** Discussions and programs with authors.

Commitment to Tikkun Olam

Our Sisterhood is deeply committed to Tikkun Olam, participating in initiatives that contribute to the well-being of our community and the world.

Join co-Presidents, Juli Harris-Sekuler (203-324-1433) and Nancy Kapchan (203-435-0389), along with our Board Members, for a fulfilling experience of personal growth, community service, and cherished friendships. Let's make this year extraordinary together!

MEN'S CLUB

Men's Club Members

Please save the date of Thursday August 1st at 7pm. We will be having a meeting welcoming Rabbi Michael Knopf. Watch for additional details on the meeting.

Also, if you are currently not using the Men's Club's WhatsApp application and would like to be added, please call or text Carl Shapiro (203)-273-1968. It is a great way to communicate with Men's Club members and get updates on upcoming events and activities.



DONATE ONLINE
Go to: www.tbe.org/donate/

OPPORTUNITIES FOR GIVING

- ☒ Adult Education Fund
- ☒ Paver Walkway Campaign
- ☒ Beth El Cares
- ☒ Rabbi Knopf's or Cantor Kaplan's Mitzvah Fund
- ☒ Goldberg Scholarship Fund
- ☒ Emmet Manheim Memorial Playground
- ☒ Kiddush Fund
- ☒ Matthew Klein Memorial Sanctuary Garden Fund
- ☒ Music Fund
- ☒ Project Ezra
- ☒ Religious School Fund
- ☒ Frank and Rose Rosner Memorial Fund
- ☒ Security Fund
- ☒ Shabbat Bags
- ☒ Youth Fund

MEMORIAL PLAQUES

Inscribe the names of your loved ones on a plaque in our Chapel foyer along with a light to commemorate their *yahrtzeit* and *yizkor* observances throughout the year.

For details, contact Mindy at office@tbe.org or 203-322-6901, ext. 301.



TREE OF LIFE

A beautiful way to commemorate a special occasion is to purchase a "leaf" on our beautiful "Tree of Life" sculpture adorning our Temple lobby. There are many more leaves available for your own personal inscriptions.

The following categories are still available:

Triple Chai	\$1,000
Silver Leaves - Gold Border	\$750
Silver Leaves (very few remaining)	\$250



INFORMATION FOR YOU...

When making a donation an acknowledgement will be mailed to the designee for donations of \$10 or more. Donations of less than \$10 will be acknowledged only in the Bulletin. All donations will be published in the Bulletin unless you state that you wish to be anonymous.

PAY YOUR DUES ONLINE

Go to www.tbe.org/donate and click on member payments.

Questions? Contact Linda at 203-322-6901, ext. 302 or lindar@tbe.org.

CONTRIBUTING SHARES OF STOCK TO TEMPLE BETH EL

One way to boost your charitable contributions to Temple Beth El is to give shares of appreciated stock instead of cash. You do not pay any tax on your capital gain, and your charitable deduction is the shares' entire fair market value.

Beth El members may contribute shares of stock to satisfy their dues pledge, their annual fund pledge, and other contributions to the Temple.

After consulting your tax advisor, please contact the TBE office at 203-322-6901.

DID YOU KNOW?

TBE offers free family membership for the first year to any member's child on the occasion of his or her marriage. For more information, contact Steve Lander at 203-322-6901, ext. 304.



CRITICAL VOLUNTEERS NEEDED FOR BUILDING ONE COMMUNITY (B1C) IN STAMFORD

B1C has a terrific tutoring program for elementary students but doesn't have enough tutors. 14 volunteers (adults or teenagers) are needed on Monday - Thursday from 4:30pm-5:45pm. The kids speak English so you do not need to speak another language but Spanish or French would be useful. Each volunteer works with up to three children.

Volunteers must commit to a minimum of three consecutive months for one session a week, have basic technology skills and familiar with how math is currently taught at the elementary level. Teenagers must be 16 years of age or older. To volunteer, register on the B1C website at <https://building1community.org/engage/volunteer-form/> and indicate it is for the Homework Club. You can also contact Margarita Zimmerman, B1C's Volunteer Director at mzimmerman@b1c.org

HAVE YOU VISITED OUR WEBSITE?

www.tbe.org

Find out about the latest news and upcoming activities ... access our online membership directory ... register for events and make donations ... connect to TBE's Twitter and Facebook pages ... and much more.

WE ARE GRATEFUL FOR YOUR CONTRIBUTIONS

IN HONOR OF:

CANTOR KATIE KAPLAN ON THE 30th ANNIVERSARY OF HER BAT MITZVAH

Laura Markowitz

THE BIRTH OF ASA BEHR KREWSON

Marsha Colten & Robert Cohen

ISABEL SIGMAN ON WINNING THE MAYOR'S LITERACY INITIATIVE LOGO CONTEST

Liz & Scott Krowitz

IN APPRECIATION OF RABBI GERRY GINSBURG, CANTOR KATIE KAPLAN AND TBE MEMBERS FOR THEIR KINDNESS AND SUPPORT AFTER OUR MOTHER'S PASSING

The Family of Regina Resnick

THE MARRIAGE OF ZACHARY KROWITZ AND SYDNEY COHN

Marilyn Galler Sofer & Mitch Sofer, Carol & Allen Krim,
Sharon & Jeff Turshen, Karen & Larry Cowit, Suzanne Horn
& Norman Stone

SHARON & STEVE KATZ ON THEIR BIRTHDAYS

Nancy & Brad Benjamin

CAROL & ALLEN KRIM FOR THEIR THOUGHTFULNESS AND FRIENDSHIP

Suzanne Horn & Norman Stone

THE MARRIAGE OF NATHAN HARON AND MICAELA REZNIK

Carol & Allen Krim

THE MARRIAGE OF LEO AND ARI LINDER

Carol & Allen Krim

LEO LINDER ON THEIR NEW POSITION AS HEAD OF KESHER

BETH EL

Carol & Allen Krim

MADELYN & ILANA METH ON BECOMING B'NOT MITZVAH

Carol & Allen Krim

DANA & CARL WEINBERG'S LEADERSHIP

Roni & Allan Lang

RABBI JOSHUA HAMMERMAN MITZVAH FUND

In memory of...

Raisa Rogova, z'l by Galina & Vladimir Landres

CANTOR KATIE KAPLAN MITZVAH FUND

In memory of...

Ethel Rosenthal, z'l by Linda & Joe Rothman

Regina Resnick, z'l by Marsha Matthews

Rosalind & Simon Alexander, z'l by Barbara & Warren Brandt

MUSIC FUND

In honor of...

In appreciation of the Senior Seder by Caryl Ferber Poser & Stacy Ferber

In memory of...

Doris Rothman, z'l by Linda & Joe Rothman

Ralph Freyberg, z'l by Pamela Tinkham

SHABBAT BAG FUND

In honor of...

The Shabbat Bag Program at Stamford Hospital by Anonymous

In memory of...

Harvey Novick, z'l by Meryl & Hank Silverstein



Have you seen our new PAVER WALKWAY?

Pavers are now available for installation this Spring.
Commemorate significant life events.
Pavers are \$250-\$500 & \$1,000 Tax deductible!

Contact Steven Lander, execdir@tbe.org for details.

IN LOVING MEMORY
OF ALAN KALTER
1943 - 2021
PEGGY KALTER

IN HONOR OF
OUR LOVING PARENTS
AND GRANDPARENTS
DEBRA ADLER-KLEIN
AND MATTHEW KLEIN

REBECCA "LOVE" FIRE
MOVE ME BRIGHTLY
TO ROCK MY SOUL

AVIVA MALLER
IN HONOR OF ALL
YOU DO FOR TBE

JOSEPH AND JANE GOLDSTEIN
IN HONOR OF
THEIR 50TH BIRTHDAYS

SHARON & STEVE KATZ
2021



REMEMBERING OUR LOVED ONES



Mindy, Jeff & Stephanie Hausman **JEAN ANIS**
 Maxine & Jay Freilich.....**KARL ARONSON**
 Maxine & Jay Freilich..... **RICHARD ARONSON**
 Nancy Greene **ADELE & AUGUST BERMAN**
 Sari & Alan Jaffe..... **EDWARD BLONDER**
 Susan Wise..... **ANNA CHERNIACK**
 Suzanne & Bob Kahn..... **TILLIE KOHN**
 Debby & Jack Goldberg..... **RUTH & MORRIS COLNER**
 Stacy & Don Cooper **JUDITH COOPER**
 Francine & Robert Plansky **MILDRED COOPER**
 Marlyn & Richard Agatstein..... **LENORE GOLD**
 Donner & Kleiner Families..... **ISADORE KLEINER**
 Joan & Robert Rosenthal..... **HYMAN DOCTOR**
 Barbara & Ed Drotman **LEO DROTMAN**
 Evelyn & Bruce Kahn **MARGOT NEU EPSTEIN**
 Nancy & Brad Benjamin.....**HAROLD FINK**
 Amy Fishkow Benjamin & Jim Benjamin**JEANETTE FISHKOW**
 Susan Wise.....**SARAH FRANKEL**
 Maxine & Jay Freilich.....**RUTH & SEYMOUR FREILICH**
 Sally & Jim Rothkopf **EMANUAL FRIEDMAN**
 Barbara & Stan Friedman **JACK FRIEDMAN**
 Fran & Rabbi Gerry Ginsburg **BARBARA GINSBURG**
 Joanne & Marshall Goldberg **ARTHUR GOLDBERG**
 Robin & Rick Redniss..... **ESTHER GOLUB**
 Shari & Sandy Weisz **PEARL GREDINGER**
 Denise & David Greenman **MARTIN GREENMAN**
 Leslie & Joseph Heyison..... **DONALD HALPRIN**
 Harriet & Fred Dulaney.....**LEWIS HELD**
 Betsy & Kevan Herold **PEARL HEROLD**
 Lori & Bruce Tobin.....**SAUL HERSHKOWITZ**
 Leslie & Joseph Heyison..... **JACK HEYISON**
 Ginette Kellner..... **FRADLA HOLLAND**
 Susan & Richard Blomberg **SELMA & ARNOLD KALISKI**
 Sharon & Steven Katz **JOSEPH KATZ**
 Peggy Kalter **DORA KOTLEROFF**
 Magida Family..... **ALAN MAGIDA**
 Stephanie & Larry Sherman**JACOB MALIN**
 Melanie Massell**MICHAEL MASSELL**
 Ellen & Joel Mellis..... **SAMUEL MELLIS**
 Robin Evans & Jeffrey Perry..... **LILY PERRY**
 Francine & Robert Plansky **PAUL PLANSKY**
 Eleanor Mirne **ARTHUR NUSSDORF**
 Rhonna & Brian Rogol **ALICE ROGOL**
 Lisa & Michael Rome **HOWARD ROME**
 Judy Schneiderman **RUTH & EMANUEL ROSENBERG**
 Gail & Jack Abrams **ARNOLD ROTH**
 Sally & Jim Rothkopf **DORIS ROTHKOPF**
 Susan & Carl Shapiro **LYNN SCHACHER**
 Barbara & Ed Drotman **MOLLY & MICHAEL SCHMALL**
 Carol & Allen Krim **ANN & LOUIS SEAVER**
 Roslyn & Merritt Nesin **MORRIS SHAPIRO**
 Sheila & Gordon Brown..... **FANNIE SHEVRIN**
 Michelle & Greg Marrinan **PHYLLIS SIEGEL**
 Marilyn Galler Sofer & Mitch Sofer.....**AARON SOFER**
 Gail & Harvey Hecht **ESTELLE & SAMUEL SOLOMON**
 Kathy Cooperman & Elliott Tuckel..... **MAX TUCKEL**
 Karen & Phil Welt **MORRIS WELT**

IN MEMORY OF:

SUSAN SCHWARTZ PORISS, z'l
 Shana Wolpoe
EMMA STERANKA, z'l
 Laura Markowitz, Fran & Rabbi Gerry Ginsburg
FLORENCE ARONSON, z'l
 Fran & Rabbi Gerry Ginsburg, Shari Goodstein & Family
RUTH ALPERT, z'l
 Rose & Sheldon Herold, Jane Sachs
ANN ROUSSO, z'l
 Liz & Scott Krowitz
JUDGE STANLEY NOVACK, z'l
 Melanie Massell

YOUTH PROGRAM FUND

In memory of...

Samuel Kweskin, z'l by Ilene & Jim Locker & Family
 Yale Kweskin, z'l by Ilene & Jim Locker & Family

BETH EL CARES

In memory of...

Emanuel Rothman, z'l by Linda & Joe Rothman
 Morris Yomtov, z'l by Brian, Rowan & Jordanna Yomtov

WE MOURN THE PASSING OF...

RUTH ALPERT, z'l
ANN ROUSSO mother of Vicki Kobliner
JUDGE STANLEY NOVACK father of Stephen Cohen
RALPH FREYDBERG husband of Susan Freydborg

SHIVA NOTICES AVAILABLE ON-LINE

Congregants who are looking for shiva information can now quickly look online instead of searching their inbox for the announcement or calling the synagogue office. Just go to TBE's website (www.tbe.org) and click "Shiva Notices" under the WHAT'S NEW menu.



Noah's Ark



Have you seen our replica of Noah's Ark in the hallway of Kesher Beth El? It is walnut, measures 76" by 72", and has 149 plaques and 18 larger animals that can include engraved messages in honor of a family's children or anyone else, or in honor of a significant family event .

We are asking you to consider honoring your children (or anyone else) by donating \$250 to this project and buying a plaque. We hope that you might be further moved to buy one of the remaining animals for a donation of \$1,000.

Proceeds to benefit Kesher Beth El.

CREATING MAGIC * CAPTURING MEANING



aviva maller | 203-554-6758
magical & meaningful events | avivamallerphoto@me.com
www.avivamallerphotography.com

while the planner envisions the ambiance of celebration, her concept is inspired by the soul and spirit of her celebrants.

The deadline for the
September-October 2024 Bulletin
will be Thursday, August 1 2024.

HOW WILL YOU ASSURE JEWISH TOMORROWS?



Commit to leaving a legacy and help ensure that Temple Beth El will be part of the fabric of the Stamford Jewish community for many years to come. [Click here](#) for our LIFE & LEGACY Honor Roll.

TEMPLE BETH EL
350 Roxbury Road
Stamford, CT 06902
www.tbe.org



LIFE & LEGACY
Assuring JEWISH TOMORROWS
A program of the HAROLD CAMPBELL FOUNDATION

To create your legacy contact Steven Lander
execdir@tbe.org | 203-322-6901, ext. 304



Is honored to serve the Stamford Jewish Community with compassion, affordability and personal service.



Thomas M. Gallagher

104 Myrtle Avenue
Stamford, CT 06902

203-359-9999
www.gallagherfuneralhome.com

We are independently owned and NOT affiliated with Leo P. Gallagher & Son Funeral Home



aviva maller 203-554-6758
PHOTOGRAPHY
avivamallerphoto@me.com
www.avivamallerphotography.com

while the photographer is
never in photographs;
her reflection is seen in the eyes
or the very soul of her subjects.

Celebrations | Bar/Bat Mitzvahs | Weddings | Corporate Events
Galas | Performances | Family Photos | Headshots

Check out our special website
Dedicated to TBE's event space

www.thebigeventspace.com

Please let your friends and business
associates know how we can fulfill their
celebratory and meeting needs.

ART GREENWALD
President

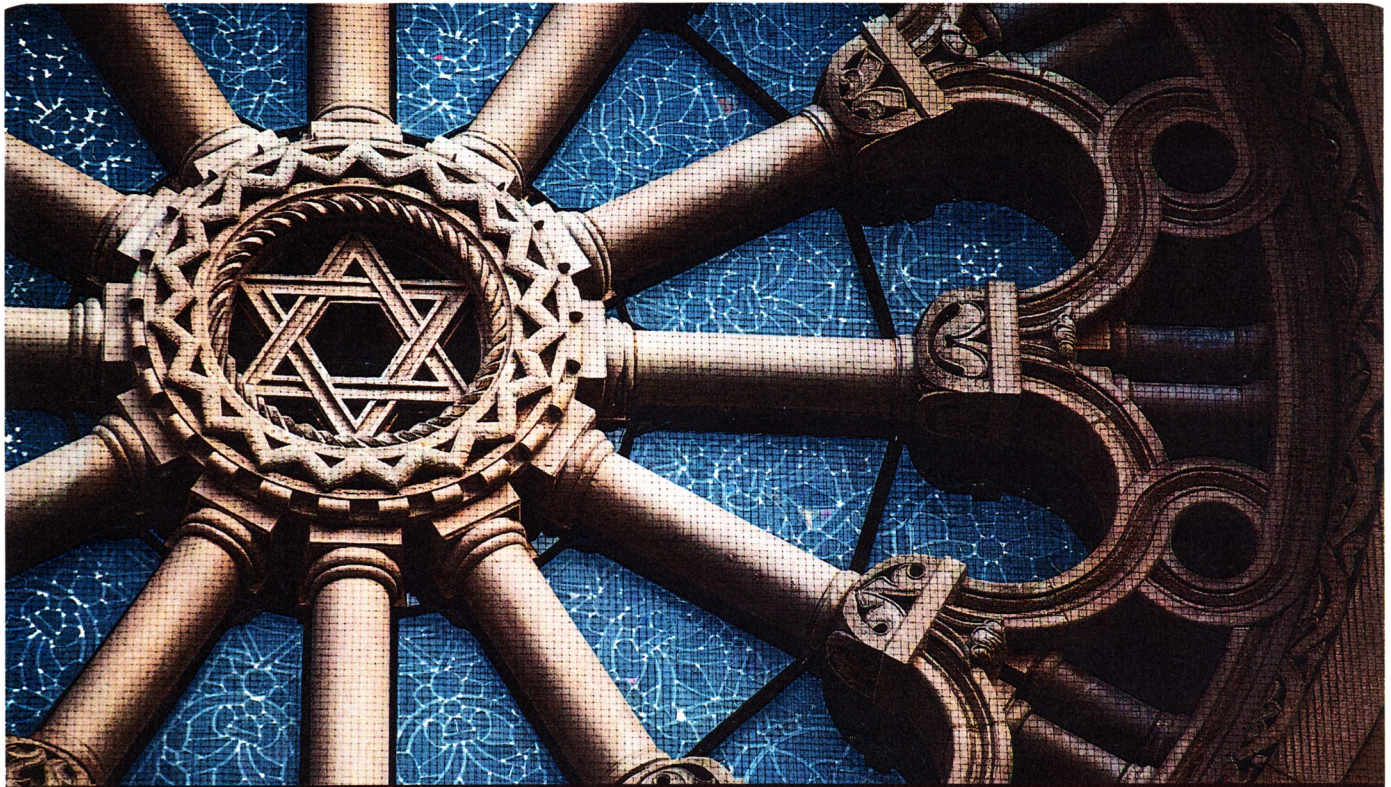
INTEGRATED PROTECTION SERVICES, LLC
320 Boston Post Road, Suite 140 DARIEN, CT 06820
Tel: 203.322.0772

WWW.INTEGRATEDPROTECTIONSERVICES.COM

SYSTEMS AND SERVICES FOR SECURITY
AND FIRE PROTECTION

SERVING CONNECTICUT AND NEW YORK
COMMERCIAL AND RESIDENTIAL





TAKING CARE OF EACH OTHER
is what community is all about.

WE'RE PROUD TO SERVE our community with personal, compassionate care.
As your Dignity Memorial® professionals, we're dedicated to helping families create
a unique and meaningful tribute that truly honors the heritage of the Jewish faith.

We invite you to contact us today to learn more.

Dignity®
MEMORIAL

✧ LIFE WELL CELEBRATED™ ✧

LEO P. GALLAGHER & SON

FUNERAL HOME

STAMFORD

203-327-1313 LeoPGallagherStamford.com